

# KD-Validated Anti-Phospho-Presenilin 1 (Ser310) Rabbit Monoclonal Antibody



**Catalog #: 63205**

## Aliases

PSEN1; Presenilin 1; PSNL1; PS-1; PS1; S182; FAD; AD3; Familial Alzheimer Disease; Presenilin-1; Alzheimer Disease 3; Protein S182; EC 3.4.23.-; EC 3.4.23; ACNINV3

## Background

Gene Name: PSEN1

NCBI Gene Entry: [5663](#)

UniProt Entry: [P49768](#)

## Application Information

Molecular Weight: Predicted, 53 kDa, observed, 22 kDa

Clonality: Rabbit monoclonal antibody

Clone ID: 24GB4510

Species Reactivity: Human

Applications Tested: Western blotting (WB), flow cytometry (FCM), immunocytochemistry (IC)

## Immunogen

A synthesized peptide derived from human Phospho-Presenilin 1 (Ser310)

## Isotype

Rabbit IgG

## Storage Buffer

Supplied in PBS (pH 7.4) containing 50% glycerol, and 0.02% sodium azide.

## Storage

Store at -20 °C for one year.

## Recommended Dilutions

Western Blotting (WB): 1:1,000-1:5,000

Flow Cytometry (FCM): 1:2,000

Immunocytochemistry (IC): 1:100-1:1,000

**Note:** This product is for research use only.

## Validation Data

---

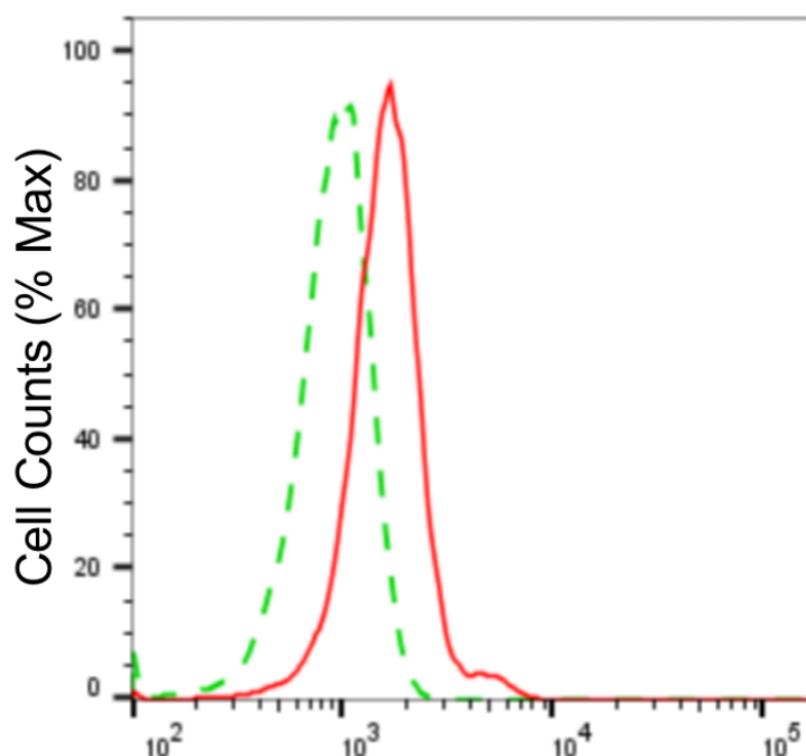
### SUPPORT

SUPPORT@GENUINBIOTECH.COM  
TEL: +1-540-855-7041

### ORDERS

SALES@GENUINBIOTECH.COM  
FAX: +1-540-855-7041

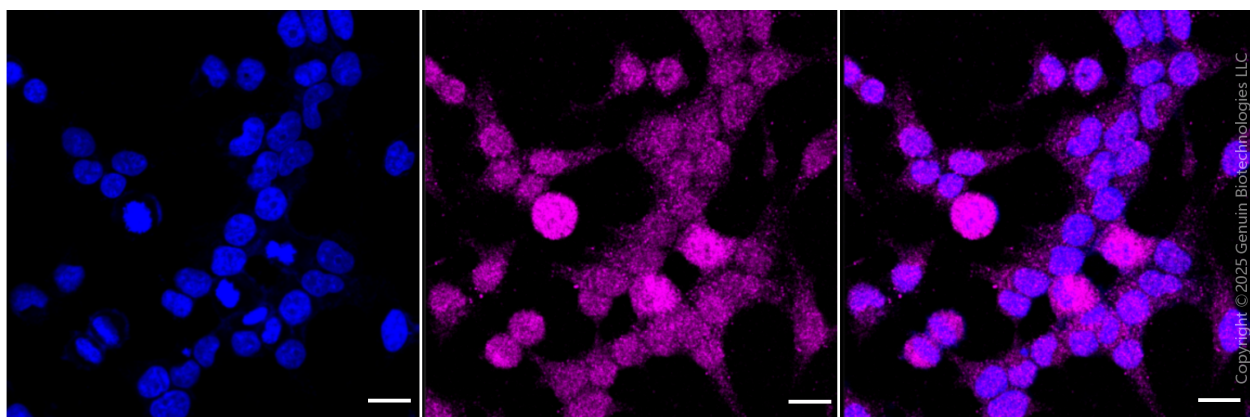
[WWW.GENUINBIOTECH.COM](http://WWW.GENUINBIOTECH.COM)



Copyright ©2024 Genuin Biotechnologies LLC

**Phospho-Presenilin 1 (Ser310)-Alexa Fluor® 647**

Flow cytometric analysis of Phospho-Presenilin 1 (Ser310) expression in HeLa cells using anti-Phospho-Presenilin 1 (Ser310) antibody (Cat#63205, 1:2,000). Green, isotype control; red, Phospho-Presenilin 1 (Ser310).



Copyright ©2025 Genuin Biotechnologies LLC

Immunocytochemical staining of HeLa cells with Phospho-Presenilin 1 (Ser310) antibody (1:1000) . Nuclei were stained blue with DAPI; Phospho-Presenilin 1 (Ser310) was stained magenta with Alexa Fluor® 647. Images were taken using Leica stellaris 5. Protein abundance based on laser Intensity and smart gain: Medium. Scale bar, 20 µm.

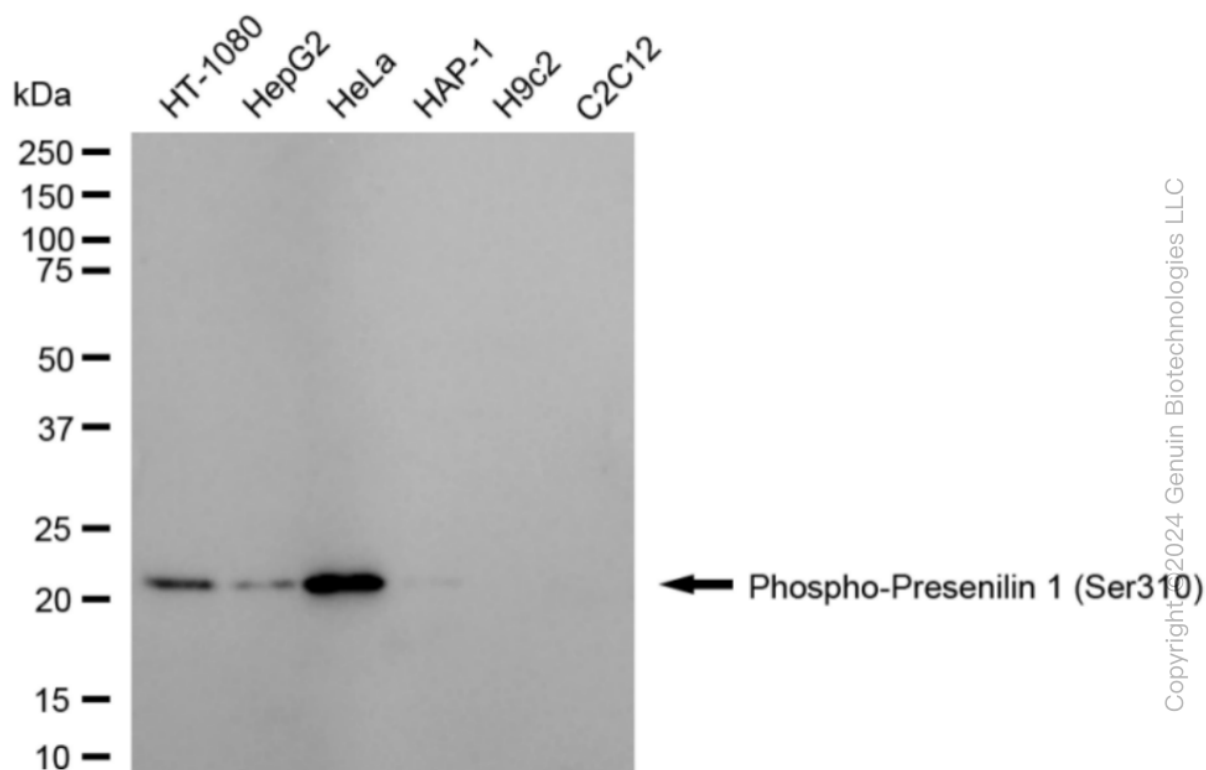
**SUPPORT**

SUPPORT@GENUINBIOTECH.COM  
TEL: +1-540-855-7041

**ORDERS**

SALES@GENUINBIOTECH.COM  
FAX: +1-540-855-7041

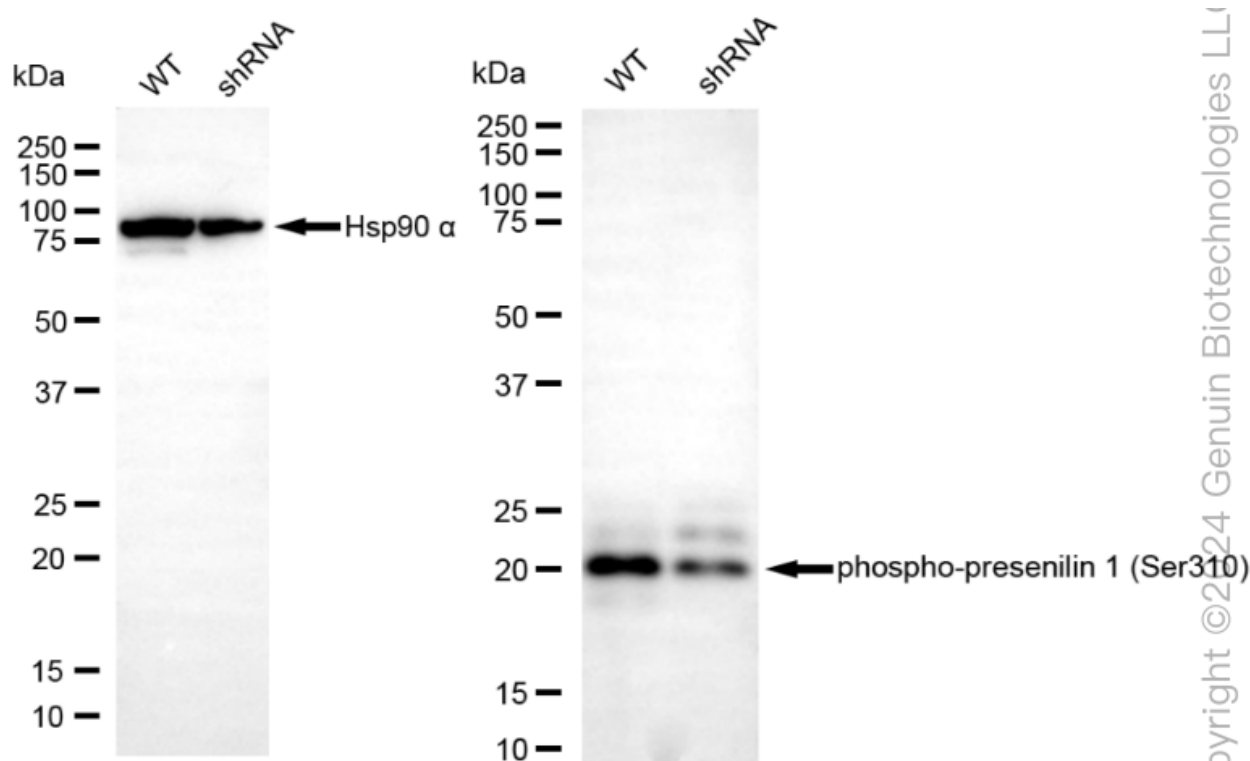
**WWW.GENUINBIOTECH.COM**



Western blotting analysis using anti-phospho-presenilin 1 (Ser310) antibody (Cat#63205). Total cell lysates (30 µg) from various cell lines were loaded and separated by SDS-PAGE. The blot was incubated with anti-phospho-presenilin 1 (Ser310) antibody (Cat#63205, 1:5,000) and HRP-conjugated goat anti-rabbit secondary antibody (Cat#201, 1:20,000) respectively. Image was developed using NaQ™ ECL Substrate Kit (Cat#716).

## KD-Validated Anti-Phospho-Presenilin 1 (Ser310) Rabbit Monoclonal Antibody

PAGE 4



Western blotting analysis using anti-phospho-presenilin 1 (Ser310) antibody (Cat#63205). Phospho-presenilin 1 (Ser310) expression in wild-type (WT) and PSEN1 shRNA knockdown (KD) HeLa cells with 20 µg of total cell lysates. β-Tubulin serves as a loading control. The blot was incubated with anti-phospho-presenilin 1 (Ser310) antibody (Cat#63205, 1:5,000) and HRP-conjugated goat anti-rabbit secondary antibody (Cat#201, 1:20,000) respectively. Image was developed using FeQ™ ECL Substrate Kit (Cat#226). PSEN1, presenilin 1.

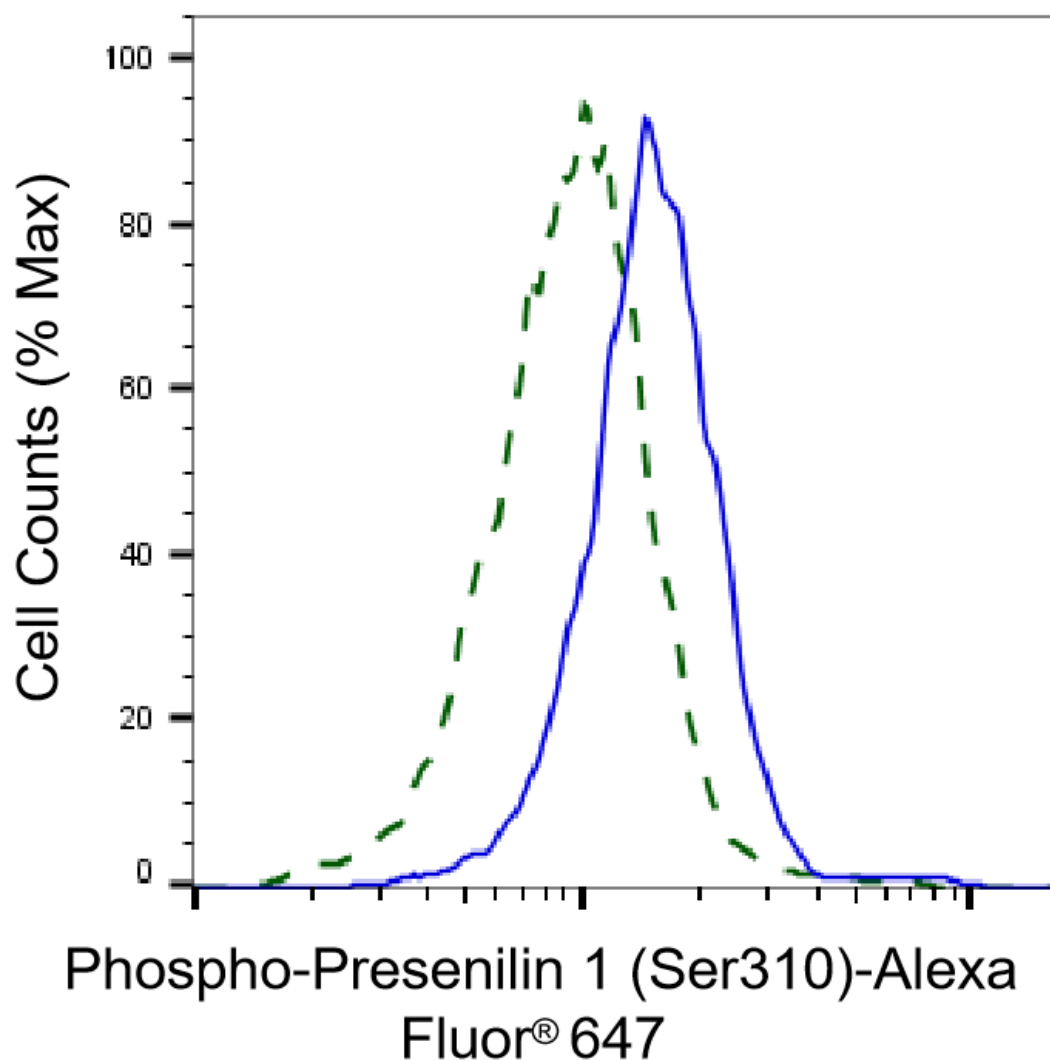
### SUPPORT

SUPPORT@GENUINBIOTECH.COM  
TEL: +1-540-855-7041

### ORDERS

SALES@GENUINBIOTECH.COM  
FAX: +1-540-855-7041

WWW.GENUINBIOTECH.COM



Validation of Presenilin 1 knockdown using flow cytometry. Wild-type(WT, Blue) and knockdown(KD, Green) HeLa cells were stained with anti-Phospho-Presenilin 1 (Ser310) antibody (Cat#63205, 1:2,000) and analyzed using BD flow cytometer.