

KD-Validated Anti-Methyl-CpG Binding Domain Protein 2 Rabbit Monoclonal Antibody



Catalog #: 63221

Aliases

MBD2; Methyl-CpG Binding Domain Protein 2; Methyl-CpG-Binding Domain Protein 2; Demethylase; DMTase; Methyl-CpG-Binding Protein MBD2; NY-CO-41

Background

Gene Name: MBD2

NCBI Gene Entry: [8932](#)

UniProt Entry: [Q9UBB5](#)

Application Information

Molecular Weight: Predicted, 43 kDa, observed, 43 kDa

Clonality: Rabbit monoclonal antibody

Clone ID: 24GB4570

Species Reactivity: Human, mouse, rat

Applications Tested: Western blotting (WB), flow cytometry (FCM), immunocytochemistry (IC)

Immunogen

A synthesized peptide derived from human MBD2

Isotype

Rabbit IgG

Storage Buffer

Supplied in PBS (pH 7.4) containing 50% glycerol, and 0.02% sodium azide.

Storage

Store at -20 °C for one year.

Recommended Dilutions

Western Blotting (WB): 1:1,000-1:5,000

Flow Cytometry (FCM): 1:2,000

Immunocytochemistry (IC): 1:100-1:1,000

Note: This product is for research use only.

Validation Data

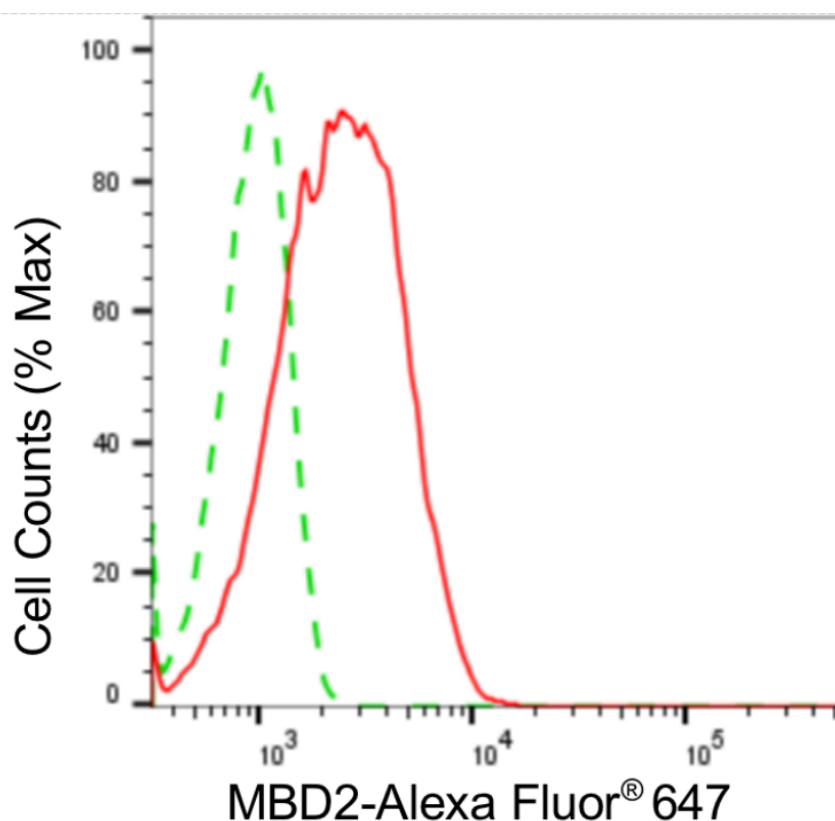
SUPPORT

SUPPORT@GENUINBIOTECH.COM
TEL: +1-540-855-7041

ORDERS

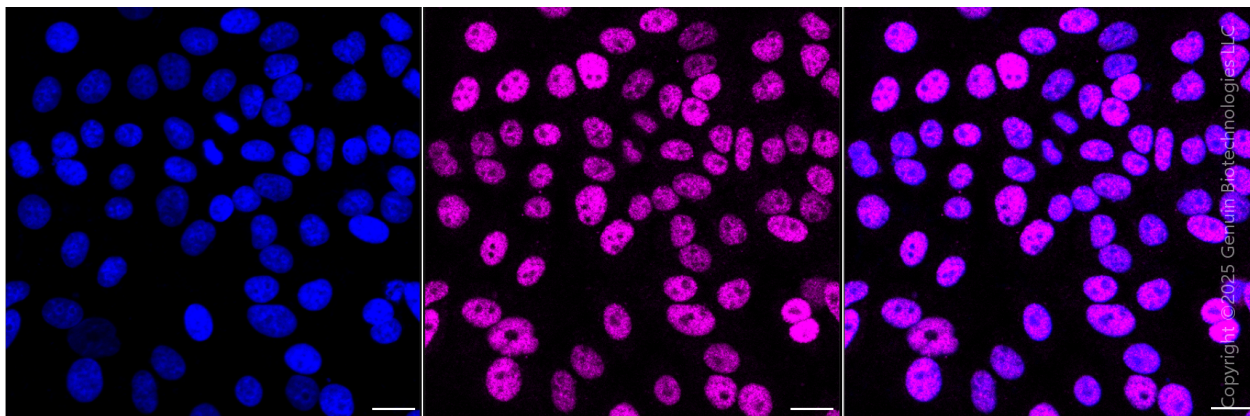
SALES@GENUINBIOTECH.COM
FAX: +1-540-855-7041

WWW.GENUINBIOTECH.COM



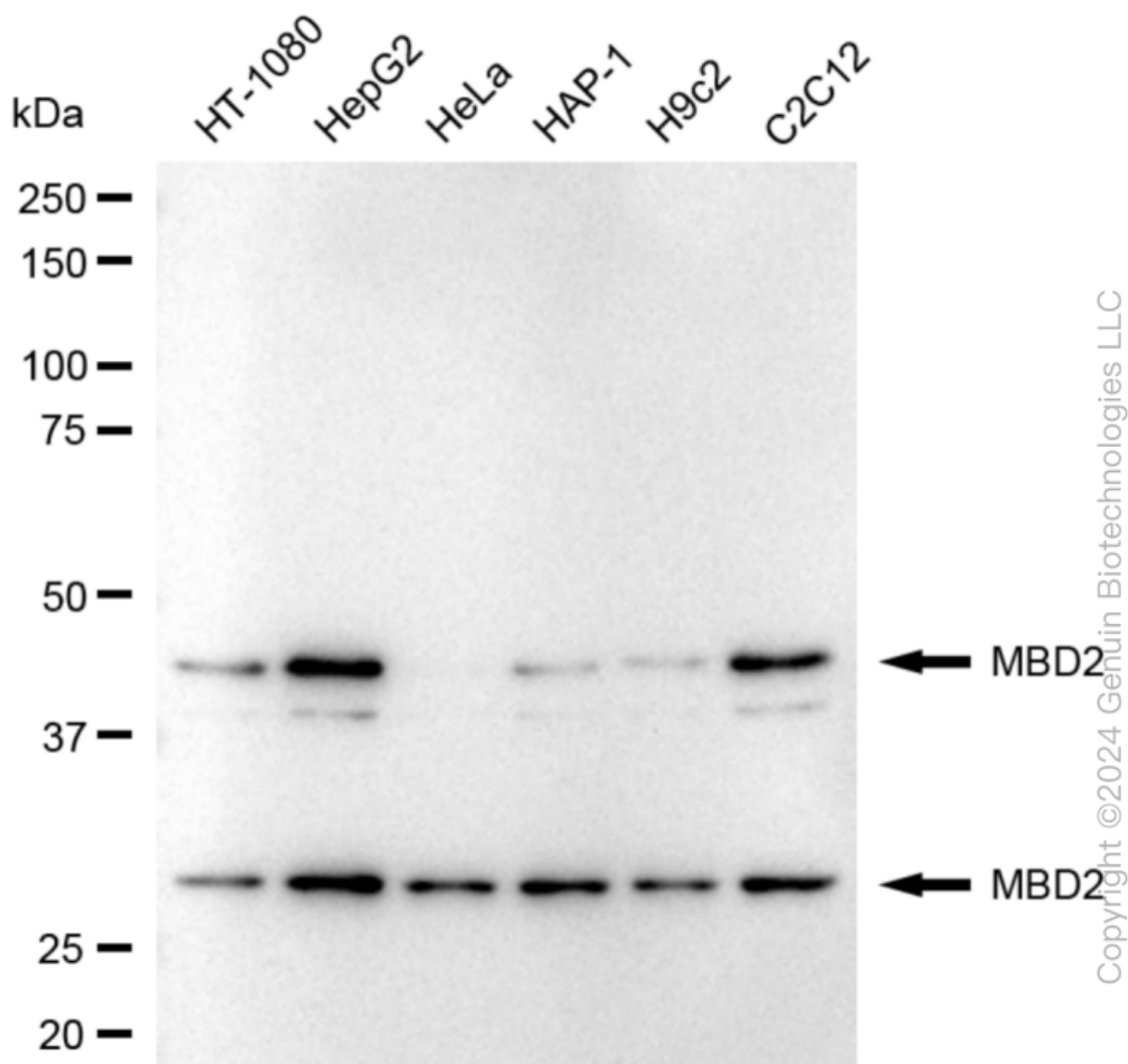
Copyright ©2024 Genuin Biotechnologies LLC

Flow cytometric analysis of MBD2 expression in HepG2 cells using anti-MBD2 antibody (Cat#63221, 1:2,000). Green, isotype control; red, MBD2.



Copyright ©2025 Genuin Biotechnologies LLC

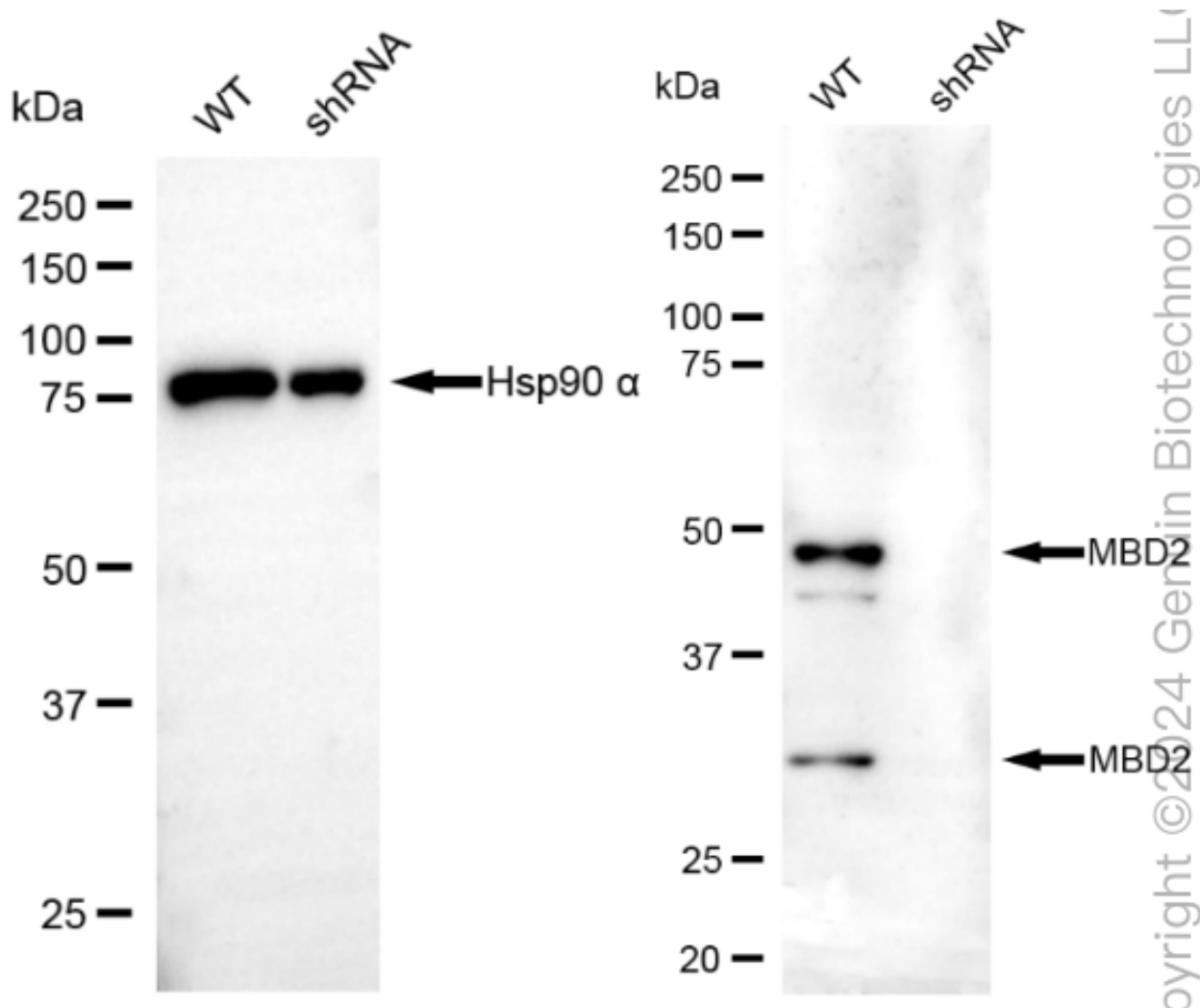
Immunocytochemical staining of HepG2 cells with anti-MBD2 antibody (Cat#63221, 1:1,000). Nuclei were stained blue with DAPI; MBD2 was stained magenta with Alexa Fluor® 647. Images were taken using Leica stellaris 5. Protein abundance based on laser Intensity and smart gain: Medium. Scale bar, 20 μm.



Western blotting analysis using anti-MBD2 antibody (Cat#63221). Total cell lysates (30 µg) from various cell lines were loaded and separated by SDS-PAGE. The blot was incubated with anti-MBD2 antibody (Cat#63221, 1:5,000) and HRP-conjugated goat anti-rabbit secondary antibody (Cat#201, 1:20,000) respectively. Image was developed using NaQ™ ECL Substrate Kit (Cat#716). MBD2, methyl-CpG binding domain protein 2.

KD-Validated Anti-Methyl-CpG Binding Domain Protein 2 Rabbit Monoclonal Antibody

PAGE 4



Western blotting analysis using anti-MBD2 antibody (Cat#63221). MBD2 expression in wild-type (WT) and MBD2 shRNA knockdown (KD) HT-1080 cells with 20 μ g of total cell lysates. Hsp90 α serves as a loading control. The blot was incubated with anti-MBD2 antibody (Cat#63221, 1:5,000) and HRP-conjugated goat anti-rabbit secondary antibody (Cat#201, 1:20,000) respectively. Image was developed using NaQTM ECL Substrate Kit (Cat#716).

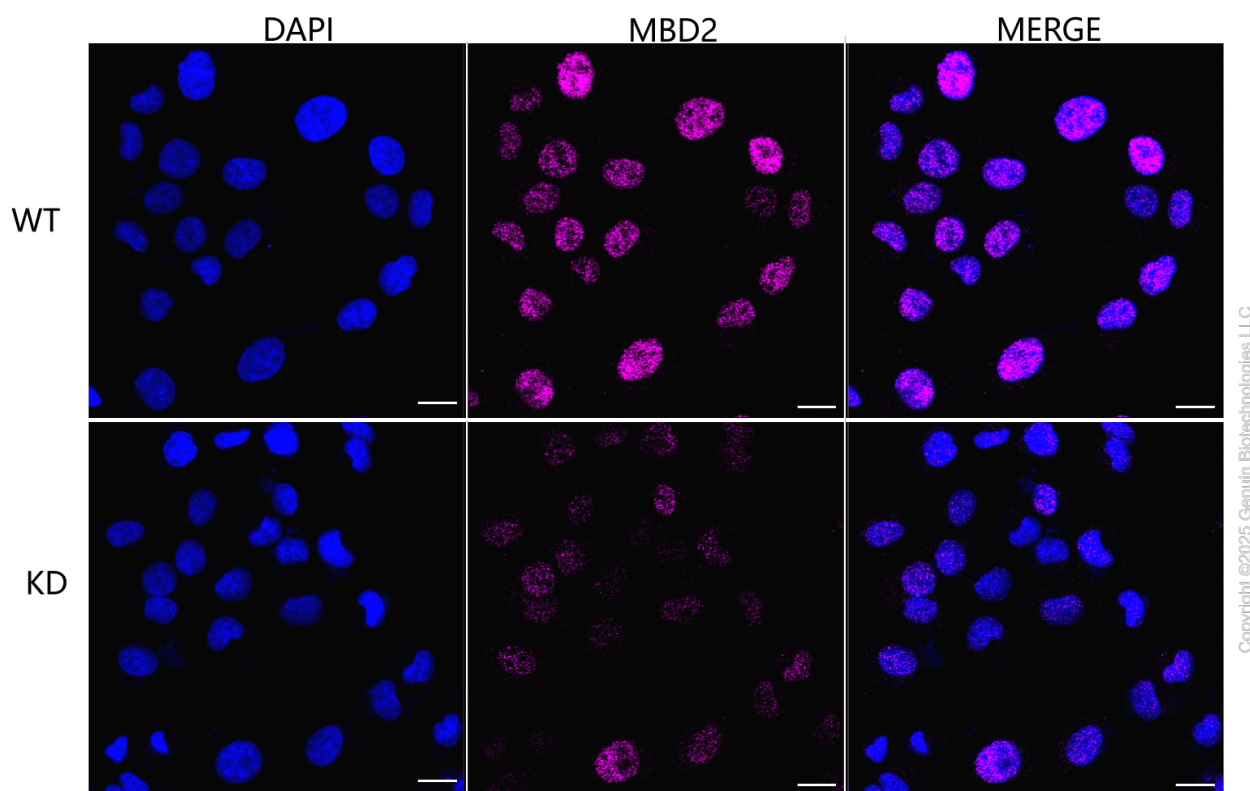
SUPPORT

SUPPORT@GENUINBIOTECH.COM
TEL: +1-540-855-7041

ORDERS

SALES@GENUINBIOTECH.COM
FAX: +1-540-855-7041

WWW.GENUINBIOTECH.COM



Immunocytochemical staining of HT-1080 cells using anti-MBD2 antibody (Cat#63221, 1:1,000), Top panel: wild-type (WT); Bottom panel: MBD2 shRNA knockdown (KD). Nuclei were stained blue with DAPI; MBD2 was stained magenta with Alexa Fluor® 647. Scale bar, 20 μ m. Permeabilization: Triton.