

# KD-Validated Anti-DAZ Associated Protein 1 Rabbit Monoclonal Antibody



**Catalog #: 63228**

## Aliases

DAZAP1; DAZ Associated Protein 1; Deleted In Azoospermia-Associated Protein 1; DAZ-Associated Protein 1; MGC19907; Deleted In Azoospermia Associated Protein 1; Testicular Tissue Protein Li 50

## Background

Gene Name: DAZAP1

NCBI Gene Entry: [26528](#)

UniProt Entry: [Q96EP5](#)

## Application Information

Molecular Weight: Predicted, 43 kDa, observed, 43 kDa

Clonality: Rabbit monoclonal antibody

Clone ID: 24GB4605

Species Reactivity: Human, mouse, rat

Applications Tested: Western blotting (WB), flow cytometry (FCM), immunocytochemistry (IC)

## Immunogen

Recombinant protein of human DAZAP1

## Isotype

Rabbit IgG

## Storage Buffer

Supplied in PBS (pH 7.4) containing 50% glycerol, and 0.02% sodium azide.

## Storage

Store at -20 °C for one year.

## Recommended Dilutions

Western Blotting (WB): 1:1,000-1:5,000

Flow Cytometry (FCM): 1:2,000

Immunocytochemistry (IC): 1:100-1:1,000

**Note:** This product is for research use only.

---

### SUPPORT

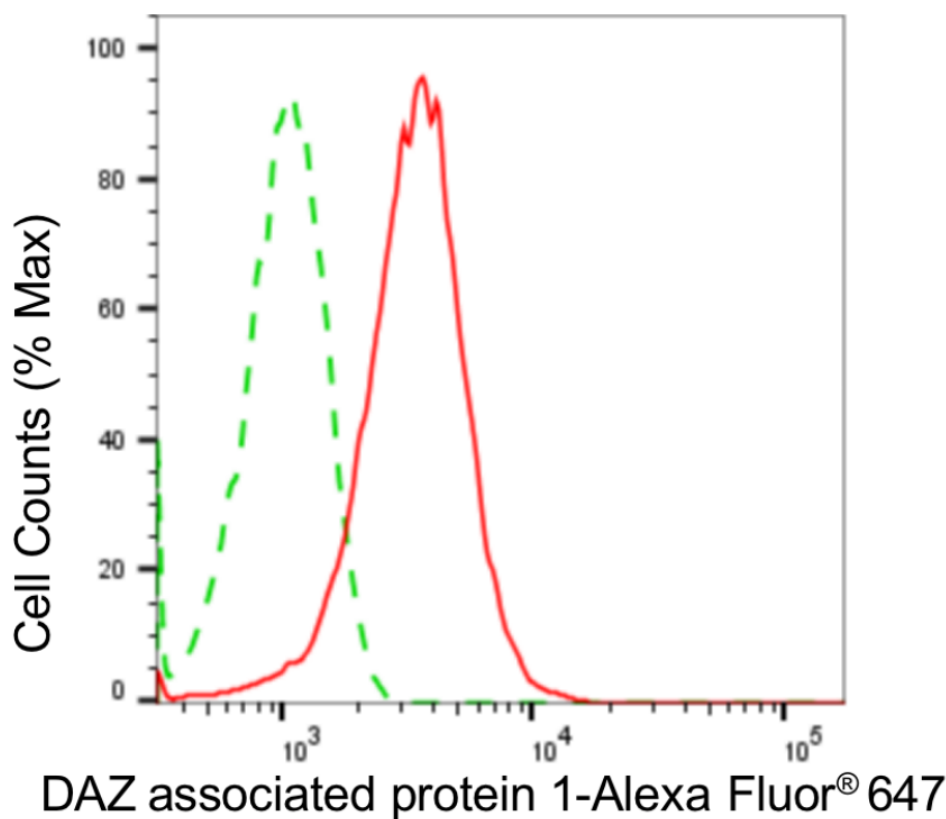
SUPPORT@GENUINBIOTECH.COM  
TEL: +1-540-855-7041

### ORDERS

SALES@GENUINBIOTECH.COM  
FAX: +1-540-855-7041

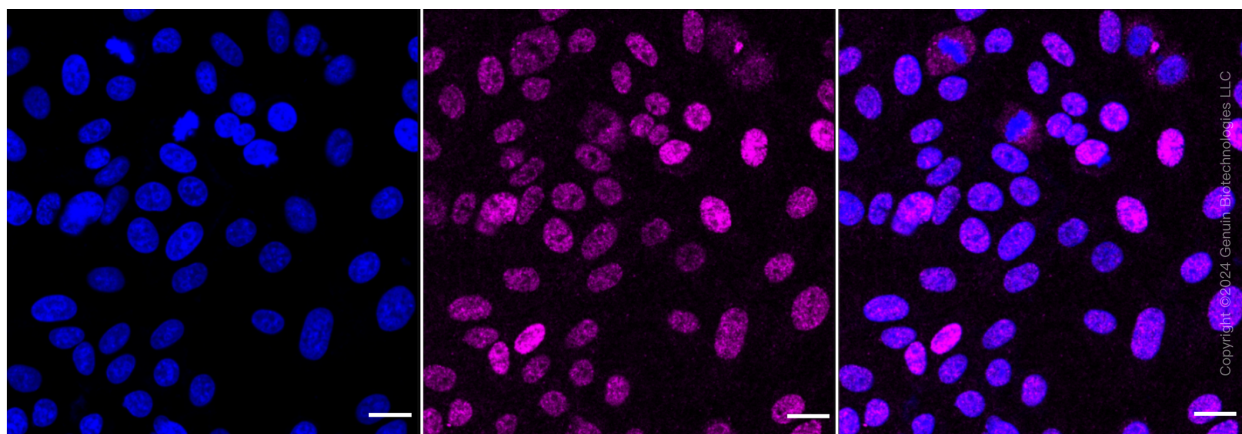
[WWW.GENUINBIOTECH.COM](http://WWW.GENUINBIOTECH.COM)

**Validation Data**



Copyright ©2024 Genuin Biotechnologies LLC

Flow cytometric analysis of DAZ associated protein 1 expression in HepG2 cells using anti-DAZ associated protein 1 antibody (Cat#63228, 1:2,000). Green, isotype control; red, DAZ associated protein 1.



Immunocytochemical staining of HepG2 cells with anti-DAZ associated protein 1 antibody (Cat#63228, 1:1,000). Nuclei were stained blue with DAPI; DAZ associated protein 1 was stained magenta with Alexa Fluor® 647. Images were taken using Leica stellaris 5. Protein abundance based on laser Intensity and smart gain: . Scale bar: 20  $\mu$ m.

**SUPPORT**

SUPPORT@GENUINBIOTECH.COM  
TEL: +1-540-855-7041

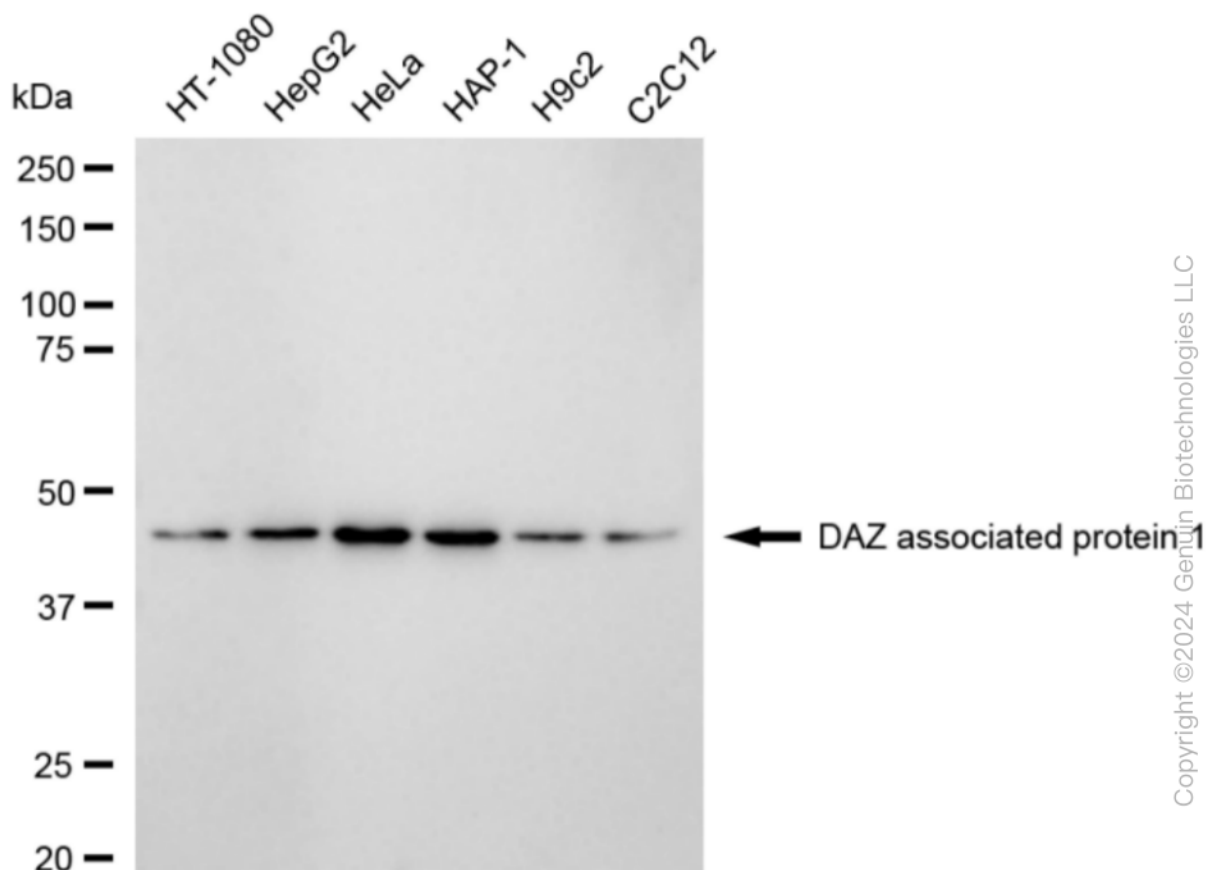
**ORDERS**

SALES@GENUINBIOTECH.COM  
FAX: +1-540-855-7041

**WWW.GENUINBIOTECH.COM**

## KD-Validated Anti-DAZ Associated Protein 1 Rabbit Monoclonal Antibody

PAGE 3



Western blotting analysis using anti-DAZ associated protein 1 antibody (Cat#63228). Total cell lysates (30 µg) from various cell lines were loaded and separated by SDS-PAGE. The blot was incubated with anti-DAZ associated protein 1 antibody (Cat#63228, 1:5,000) and HRP-conjugated goat anti-rabbit secondary antibody (Cat#201, 1:20,000) respectively. Image was developed using FeQ™ ECL Substrate Kit (Cat#226).

### SUPPORT

SUPPORT@GENUINBIOTECH.COM  
TEL: +1-540-855-7041

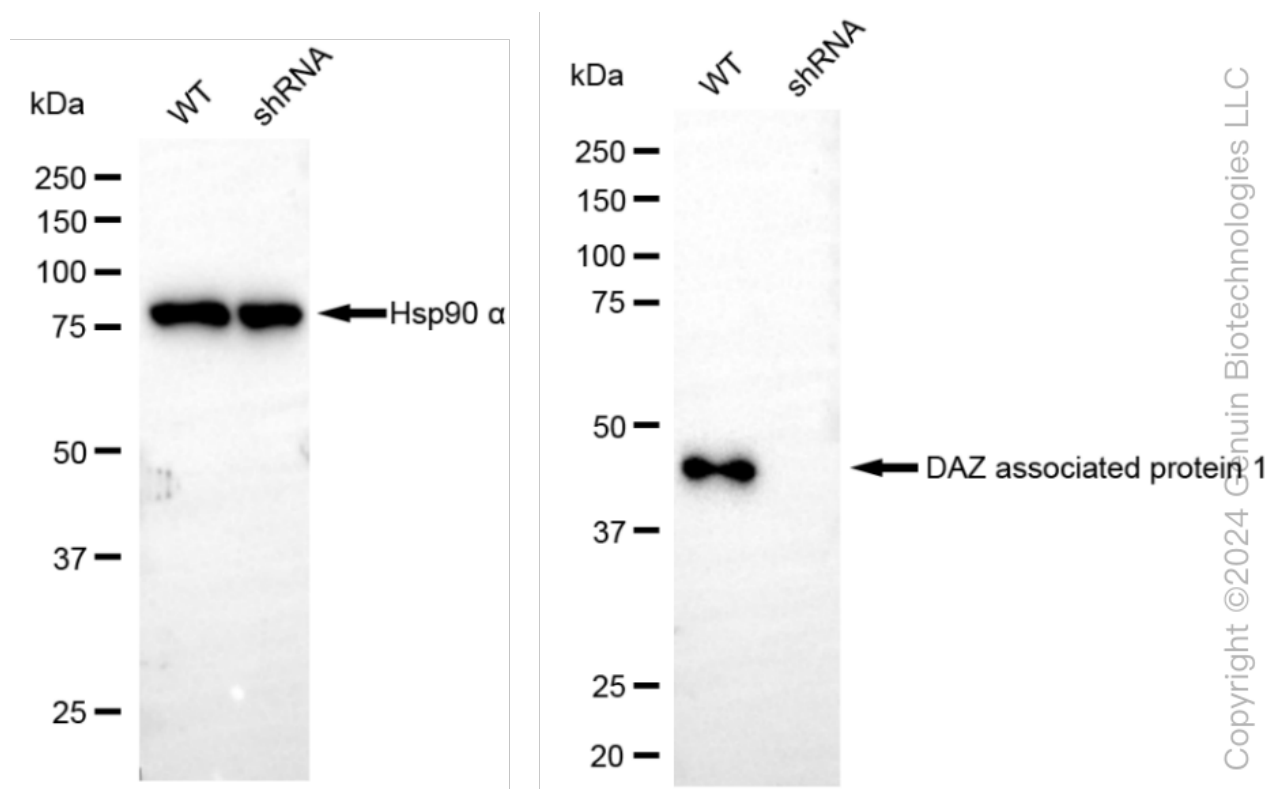
### ORDERS

SALES@GENUINBIOTECH.COM  
FAX: +1-540-855-7041

WWW.GENUINBIOTECH.COM

## KD-Validated Anti-DAZ Associated Protein 1 Rabbit Monoclonal Antibody

PAGE 4



Western blotting analysis using anti-DAZ associated protein 1 antibody (Cat#63228). DAZ associated protein 1 expression in wild-type (WT) and DAZ associated protein 1 (DAZAP1) shRNA knockdown (KD) HeLa cells with 20 µg of total cell lysates. Hsp90 α serves as a loading control. The blot was incubated with anti-DAZ associated protein 1 antibody (Cat#63228, 1:5,000) and HRP-conjugated goat anti-rabbit secondary antibody (Cat#201, 1:20,000) respectively. Image was developed using NaQ™ ECL Substrate Kit (Cat#716).

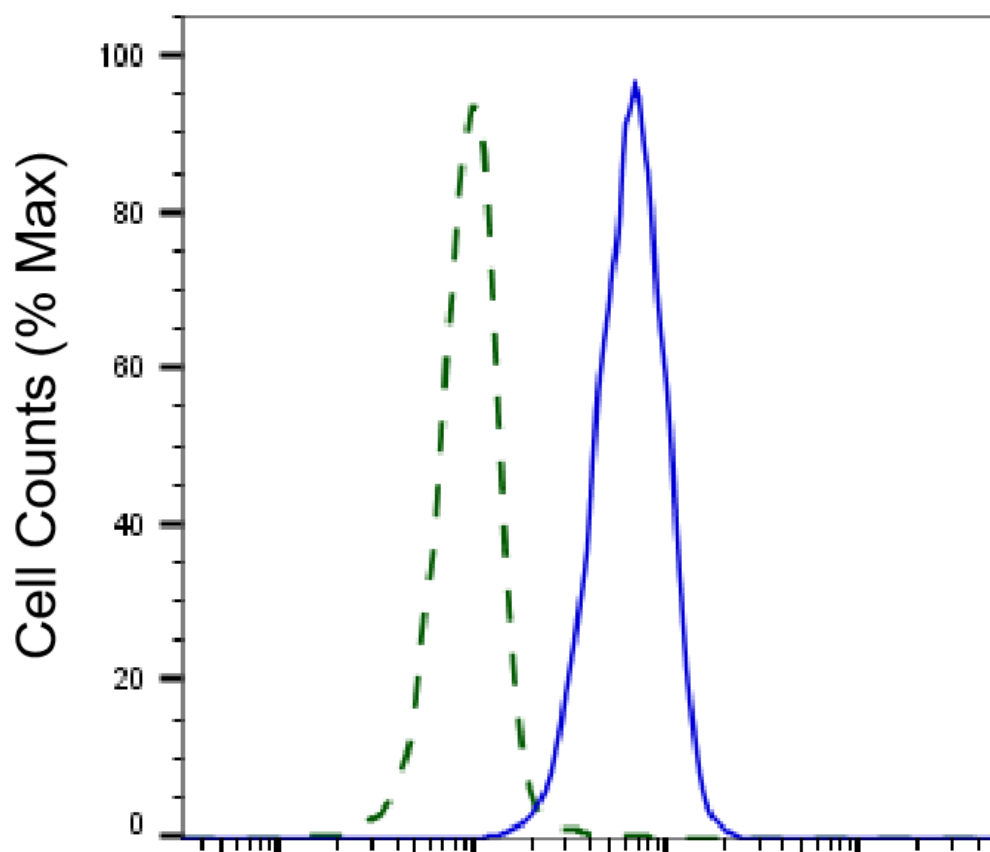
### SUPPORT

SUPPORT@GENUINBIOTECH.COM  
TEL: +1-540-855-7041

### ORDERS

SALES@GENUINBIOTECH.COM  
FAX: +1-540-855-7041

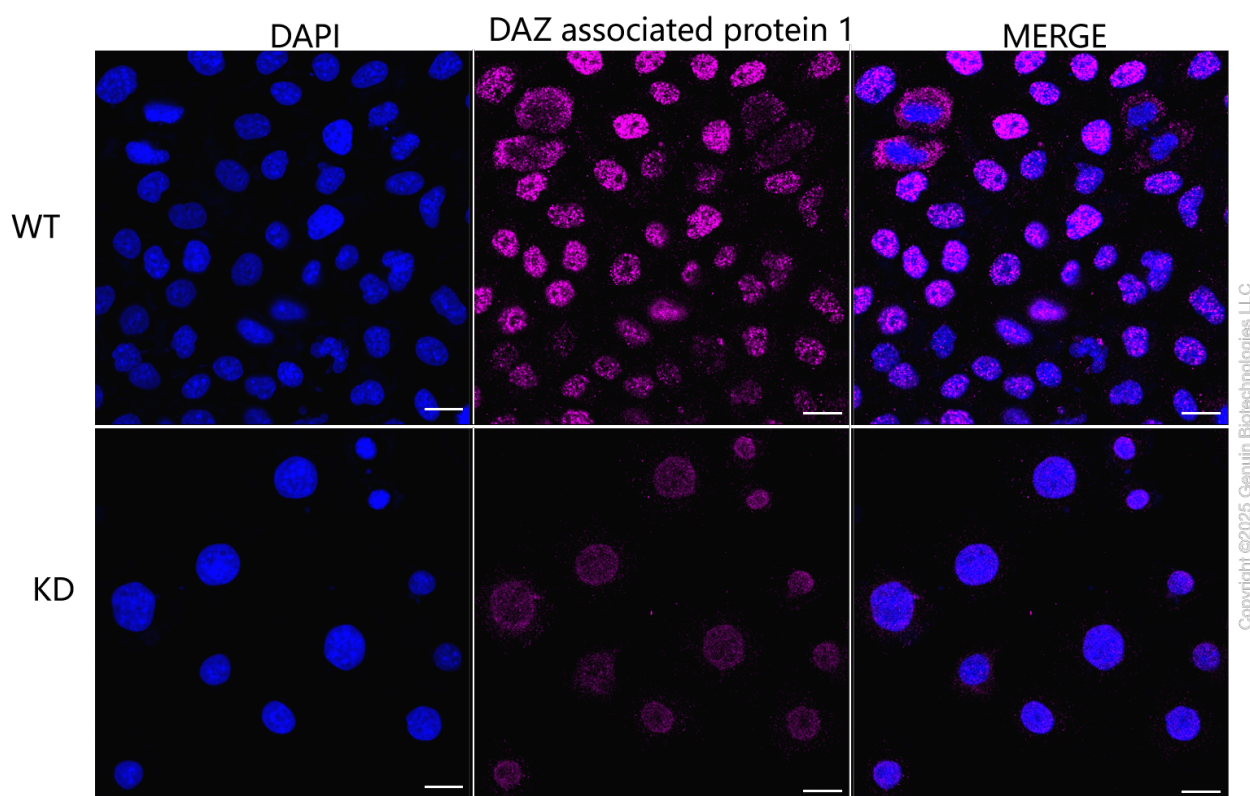
[WWW.GENUINBIOTECH.COM](http://WWW.GENUINBIOTECH.COM)



Copyright ©2025 Genuin Biotechnologies LLC

## DAZ associated protein 1-Alexa Fluor® 647

Validation of DAZ associated protein 1 knockdown using flow cytometry. Wild-type(WT, Blue) and knockdown(KD, Green) HeLa cells were stained with anti-DAZ associated protein 1 antibody (Cat#63228, 1:2,000) and analyzed using BD flow cytometer.



Immunocytochemical staining of HeLa cells using anti-DAZ associated protein 1 antibody (Cat#63228, 1:1,000), Top panel: wild-type (WT); Bottom panel: DAZ associated protein 1 shRNA knockdown (KD). Nuclei were stained blue with DAPI; DAZ associated protein 1 was stained magenta with Alexa Fluor® 647. Scale bar, 20  $\mu$ m. Permeabilization: Triton.