

KD-Validated Anti-TANK Binding Kinase 1 Rabbit Monoclonal Antibody



Catalog #: 63237

Aliases

TBK1; TANK Binding Kinase 1; NAK; Serine/Threonine-Protein Kinase TBK1; NF-Kappa-B-Activating Kinase; TANK-Binding Kinase 1; T2K; NF-KB-Activating Kinase; EC 2.7.11.1; EC 2.7.11; FTDALS4; IIAE8

Background

Gene Name: TBK1

NCBI Gene Entry: [29110](#)

UniProt Entry: [Q9UHD2](#)

Application Information

Molecular Weight: Predicted, 83 kDa, observed, 75 kDa

Clonality: Rabbit monoclonal antibody

Clone ID: 24GB4650

Species Reactivity: Human, mouse, rat

Applications Tested: Western blotting (WB), flow cytometry (FCM), immunocytochemistry (IC)

Immunogen

A synthesized peptide derived from human NAK/TBK1 (N-term)

Isotype

Rabbit IgG

Storage Buffer

Supplied in PBS (pH 7.4) containing 50% glycerol, and 0.02% sodium azide.

Storage

Store at -20 °C for one year.

Recommended Dilutions

Western Blotting (WB): 1:1,000-1:5,000

Flow Cytometry (FCM): 1:2,000

Immunocytochemistry (IC): 1:100-1:1,000

Note: This product is for research use only.

SUPPORT

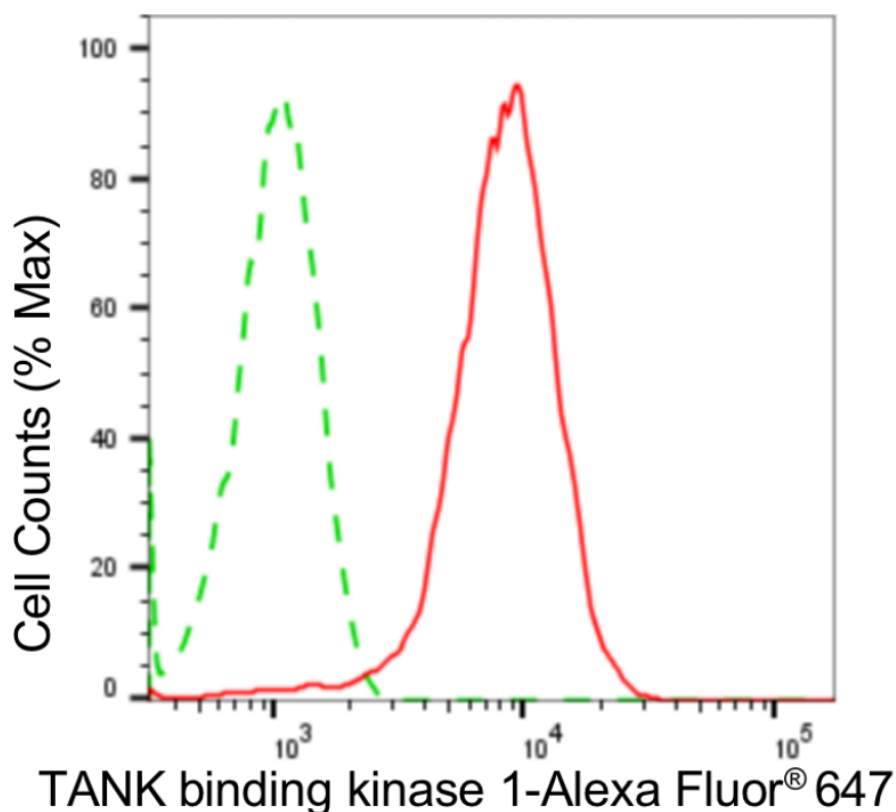
SUPPORT@GENUINBIOTECH.COM
TEL: +1-540-855-7041

ORDERS

SALES@GENUINBIOTECH.COM
FAX: +1-540-855-7041

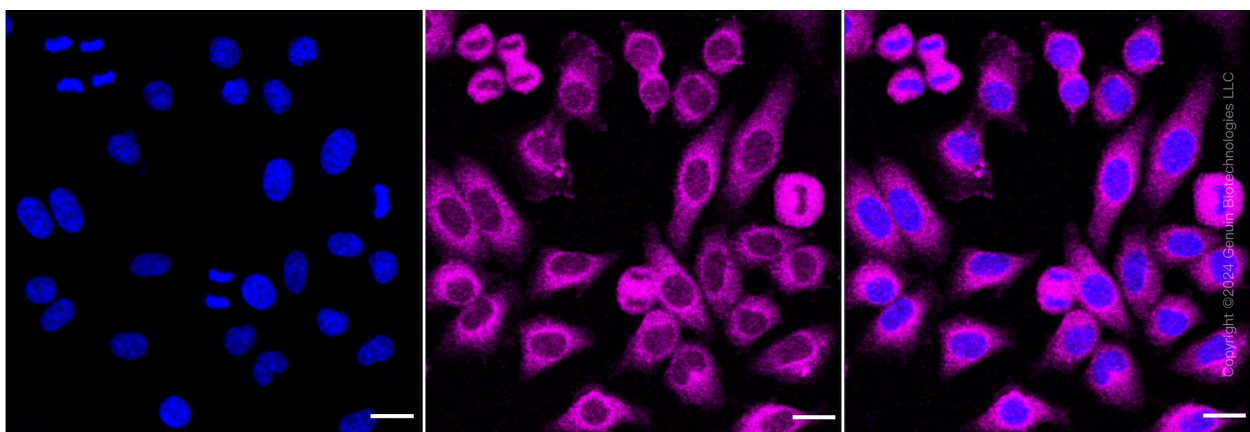
WWW.GENUINBIOTECH.COM

Validation Data



Copyright ©2024 Genuin Biotechnologies LLC

Flow cytometric analysis of TANK binding kinase 1 expression in HepG2 cells using anti-TANK binding kinase 1 antibody (Cat#63237, 1:2,000). Green, isotype control; red, TANK binding kinase 1.



Immunocytochemical staining of HepG2 cells with anti-TANK binding kinase 1 antibody (Cat#63237, 1:1,000). Nuclei were stained blue with DAPI; TANK binding kinase 1 was stained magenta with Alexa Fluor® 647. Images were taken using Leica stellaris 5. Protein abundance based on laser Intensity and smart gain: Medium. Scale bar: 20 μ m.

SUPPORT

SUPPORT@GENUINBIOTECH.COM
TEL: +1-540-855-7041

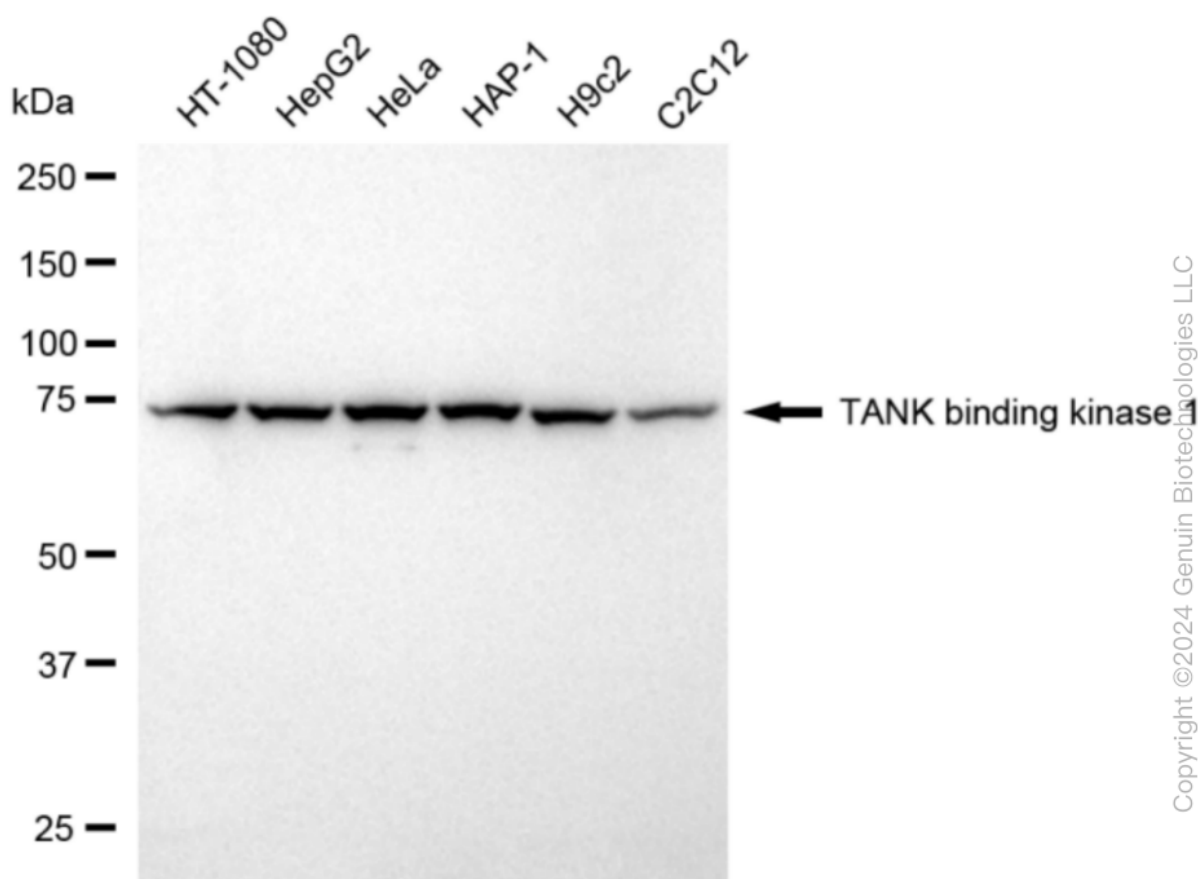
ORDERS

SALES@GENUINBIOTECH.COM
FAX: +1-540-855-7041

WWW.GENUINBIOTECH.COM

KD-Validated Anti-TANK Binding Kinase 1 Rabbit Monoclonal Antibody

PAGE 3



Copyright ©2024 Genuin Biotechnologies LLC

Western blotting analysis using anti-TANK binding kinase 1 antibody (Cat#63237). Total cell lysates (30 μ g) from various cell lines were loaded and separated by SDS-PAGE. The blot was incubated with anti-TANK binding kinase 1 antibody (Cat#63237, 1:5,000) and HRP-conjugated goat anti-rabbit secondary antibody (Cat#201, 1:20,000) respectively. Image was developed using NaQ™ ECL Substrate Kit (Cat#716).

SUPPORT

SUPPORT@GENUINBIOTECH.COM
TEL: +1-540-855-7041

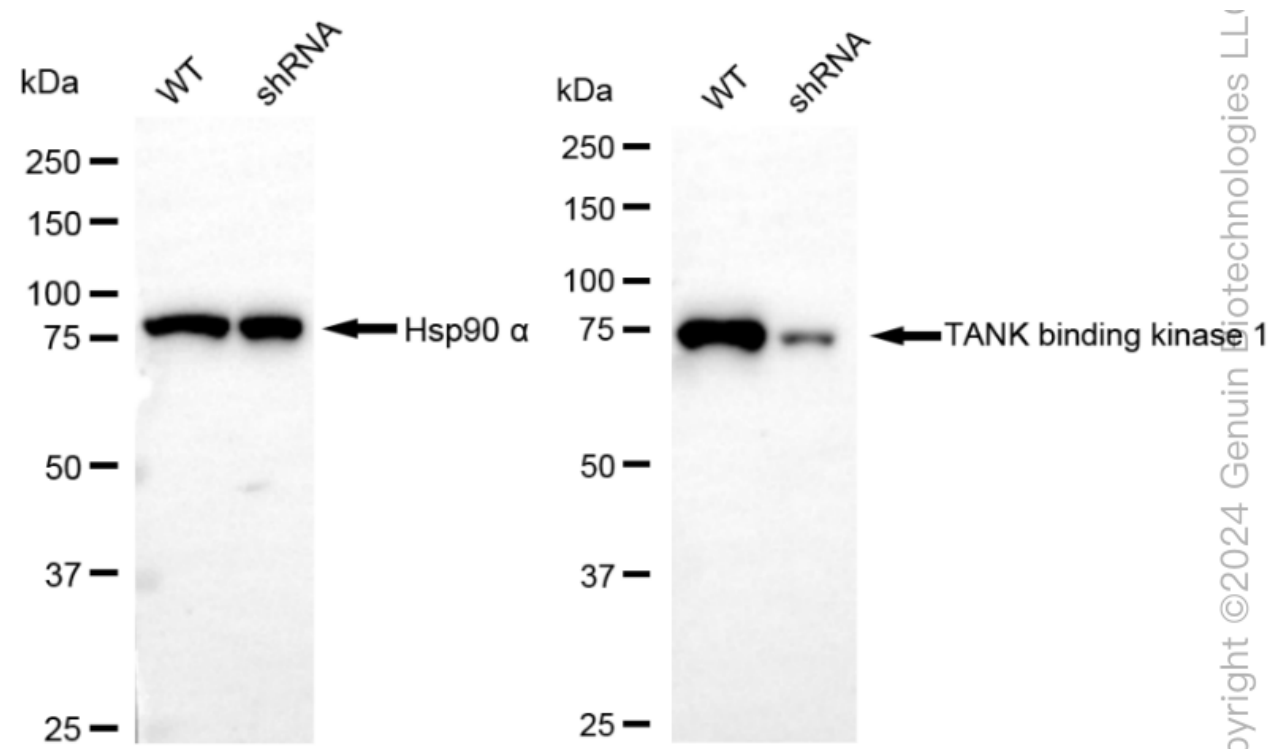
ORDERS

SALES@GENUINBIOTECH.COM
FAX: +1-540-855-7041

WWW.GENUINBIOTECH.COM

KD-Validated Anti-TANK Binding Kinase 1 Rabbit Monoclonal Antibody

PAGE 4



Western blotting analysis using anti-TANK binding kinase 1 antibody (Cat#63237). TANK binding kinase 1 expression in wild type (WT) and TANK binding kinase 1 (TBK1) shRNA knockdown (KD) HeLa cells with 20 µg of total cell lysates. Hsp90 α serves as a loading control. The blot was incubated with anti-TANK binding kinase 1 antibody (Cat#63237, 1:5,000) and HRP-conjugated goat anti-rabbit secondary antibody (Cat#201, 1:20,000) respectively. Image was developed using NaQ™ ECL Substrate Kit (Cat#716).

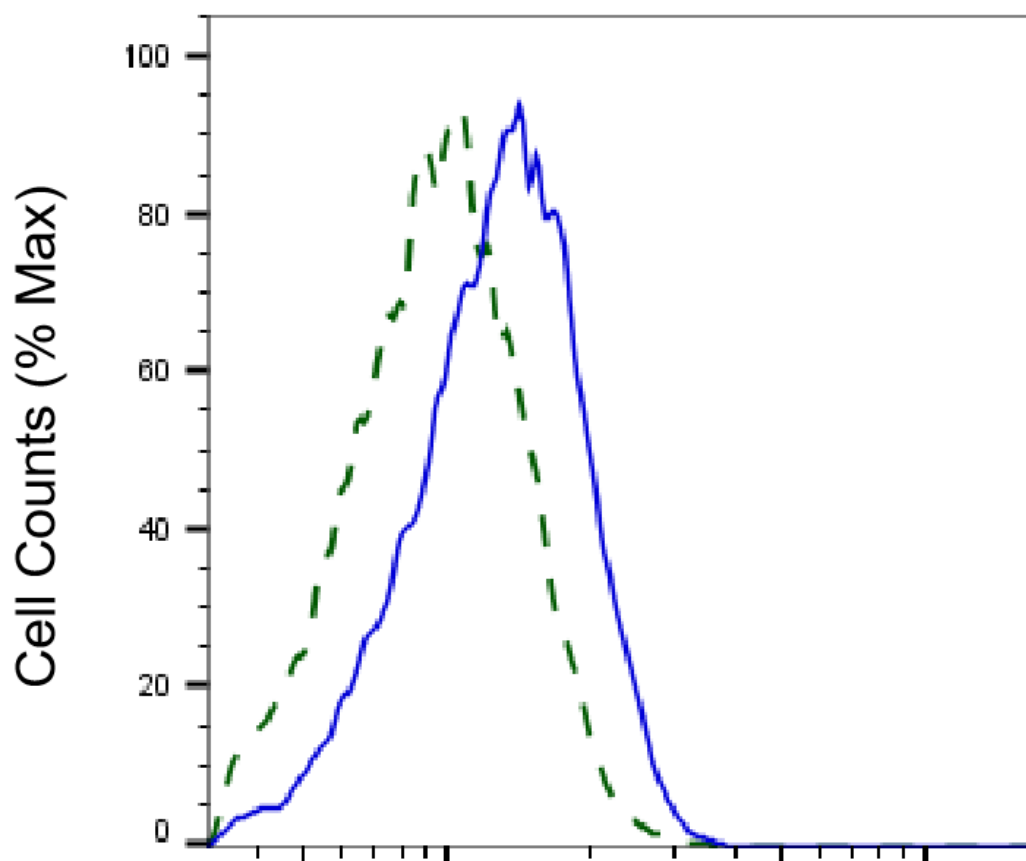
SUPPORT

SUPPORT@GENUINBIOTECH.COM
TEL: +1-540-855-7041

ORDERS

SALES@GENUINBIOTECH.COM
FAX: +1-540-855-7041

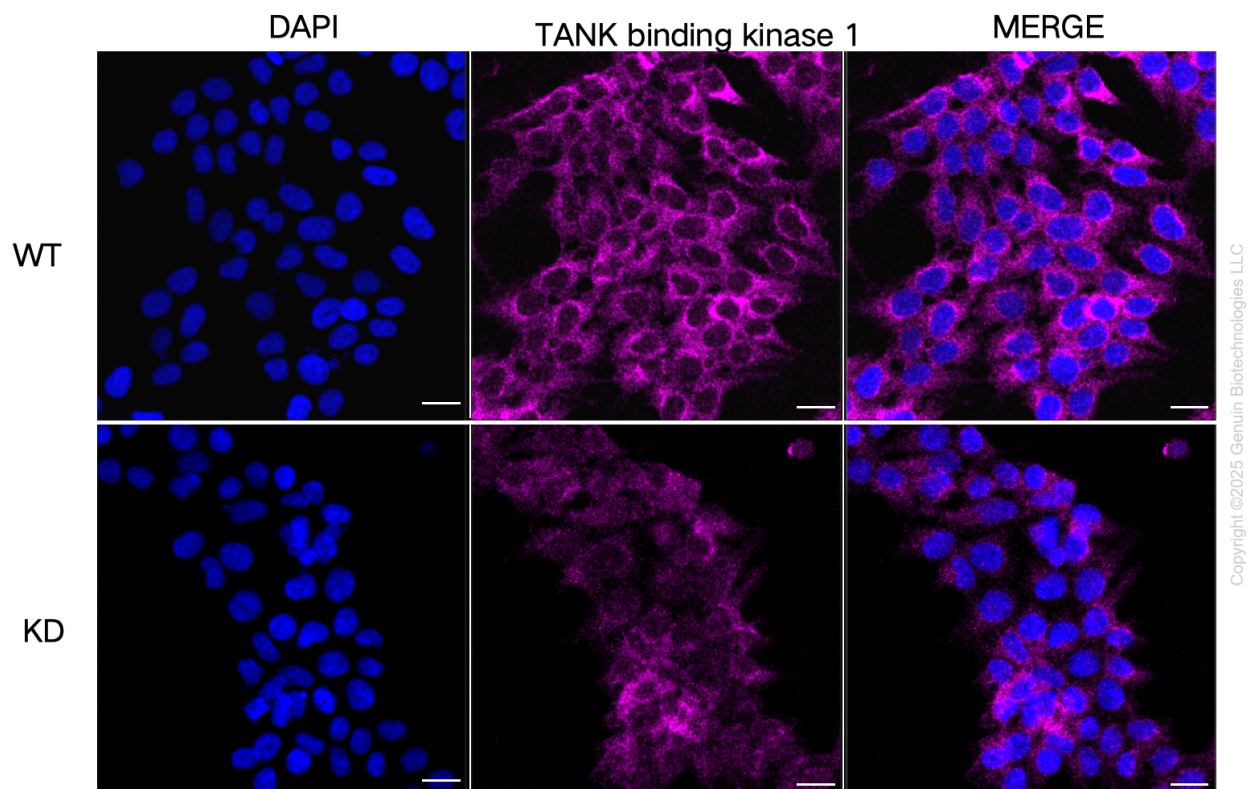
WWW.GENUINBIOTECH.COM



Copyright ©2025 Genuin Biotechnologies LLC

TANK binding kinase 1-Alexa Fluor® 647

Validation of TANK binding kinase 1 knockdown using flow cytometry. Wild-type(WT, Blue) and knockdown(KD, Green) HeLa cells were stained with anti-TANK binding kinase 1 antibody (Cat#63237, 1:2,000) and analyzed using BD flow cytometer.



Immunocytochemical staining of HeLa cells using anti-TANK binding kinase 1 antibody (Cat#63237, 1:1,000), Top panel: wild-type (WT); Bottom panel: TANK binding kinase 1 shRNA knockdown (KD). Nuclei were stained blue with DAPI; TANK binding kinase 1 was stained magenta with Alexa Fluor® 647. Scale bar, 20 μ m.