

KD-Validated Anti-NF- κ B p65 Recombinant Rabbit Monoclonal Antibody



Catalog #: 63241

Aliases

RELA; RELA Proto-Oncogene, NF-KB Subunit; Nuclear Factor Of Kappa Light Polypeptide Gene Enhancer In B-Cells; NFKB3; P65; V-Rel Avian Reticuloendotheliosis Viral Oncogene Homolog A; Nuclear Factor NF-Kappa-B P65 Subunit; Transcription Factor P65; NF-Kappa-B Transcription Factor P65; NF-Kappa-B; P65delta3; AIF3BL3; CMCU

Background

Gene Name: RELA

NCBI Gene Entry: [5970](#)

UniProt Entry: [Q04206](#)

Application Information

Molecular Weight: Predicted, 60 kDa, observed, 65 kDa

Clonality: Rabbit monoclonal antibody

Clone ID: 23GB1490

Species Reactivity: Human, mouse, rat

Applications Tested: Western blotting (WB), flow cytometry (FCM), immunocytochemistry (IC)

Immunogen

A synthesized peptide derived from human NF- κ B p65

Isotype

Rabbit IgG

Storage Buffer

Supplied in PBS (pH 7.4) containing 50% glycerol, and 0.02% sodium azide.

Storage

Store at -20 °C for one year.

Recommended Dilutions

Western Blotting (WB): 1:2,000-1:10,000

Flow Cytometry (FCM): 1:2,000

Immunocytochemistry (IC): 1:100-1:1,000

SUPPORT

SUPPORT@GENUINBIOTECH.COM
TEL: +1-540-855-7041

ORDERS

SALES@GENUINBIOTECH.COM
FAX: +1-540-855-7041

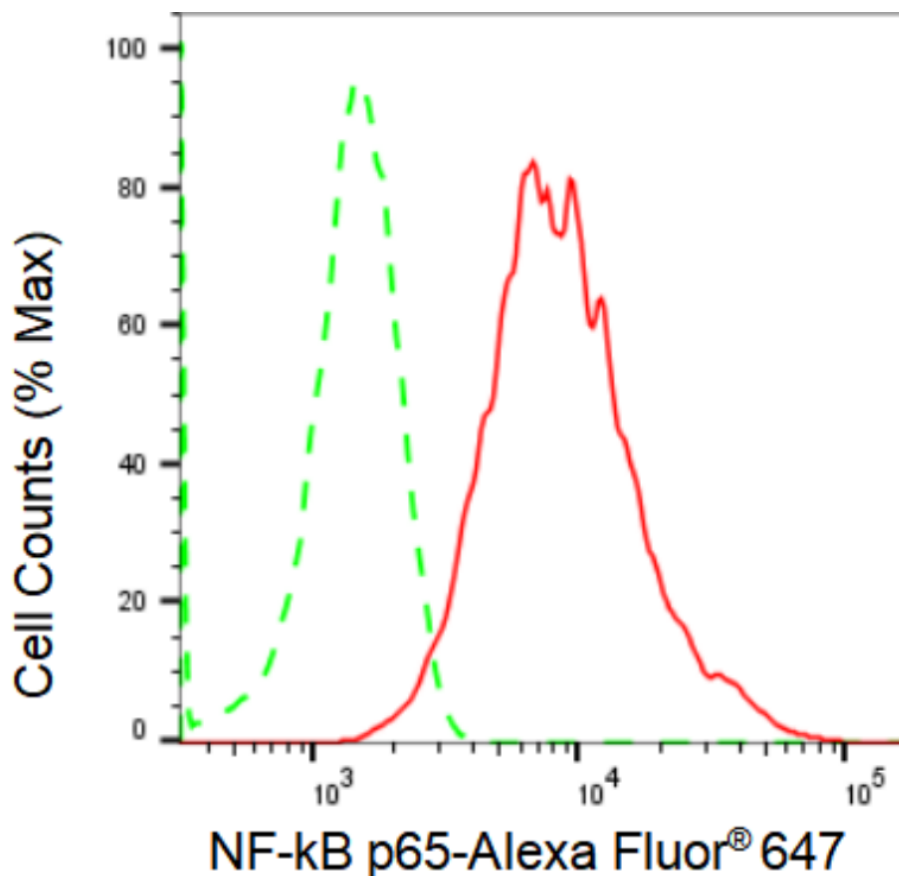
WWW.GENUINBIOTECH.COM

KD-Validated Anti-NF-kB p65 Recombinant Rabbit Monoclonal Antibody

PAGE 2

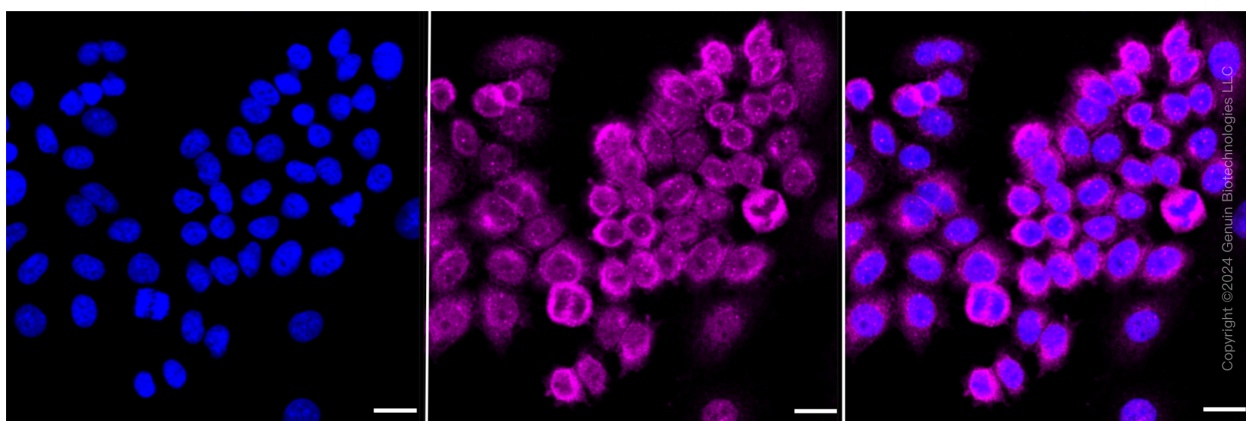
Note: This product is for research use only.

Validation Data



Copyright ©2024 Genuin Biotechnologies LLC

Flow cytometric analysis of NF-kB p65 expression in HepG2 cells using NF-kB p65 antibody (Cat#63241, 1:2,000). Green, isotype control; red, NF-kB p65.



Copyright ©2024 Genuin Biotechnologies LLC

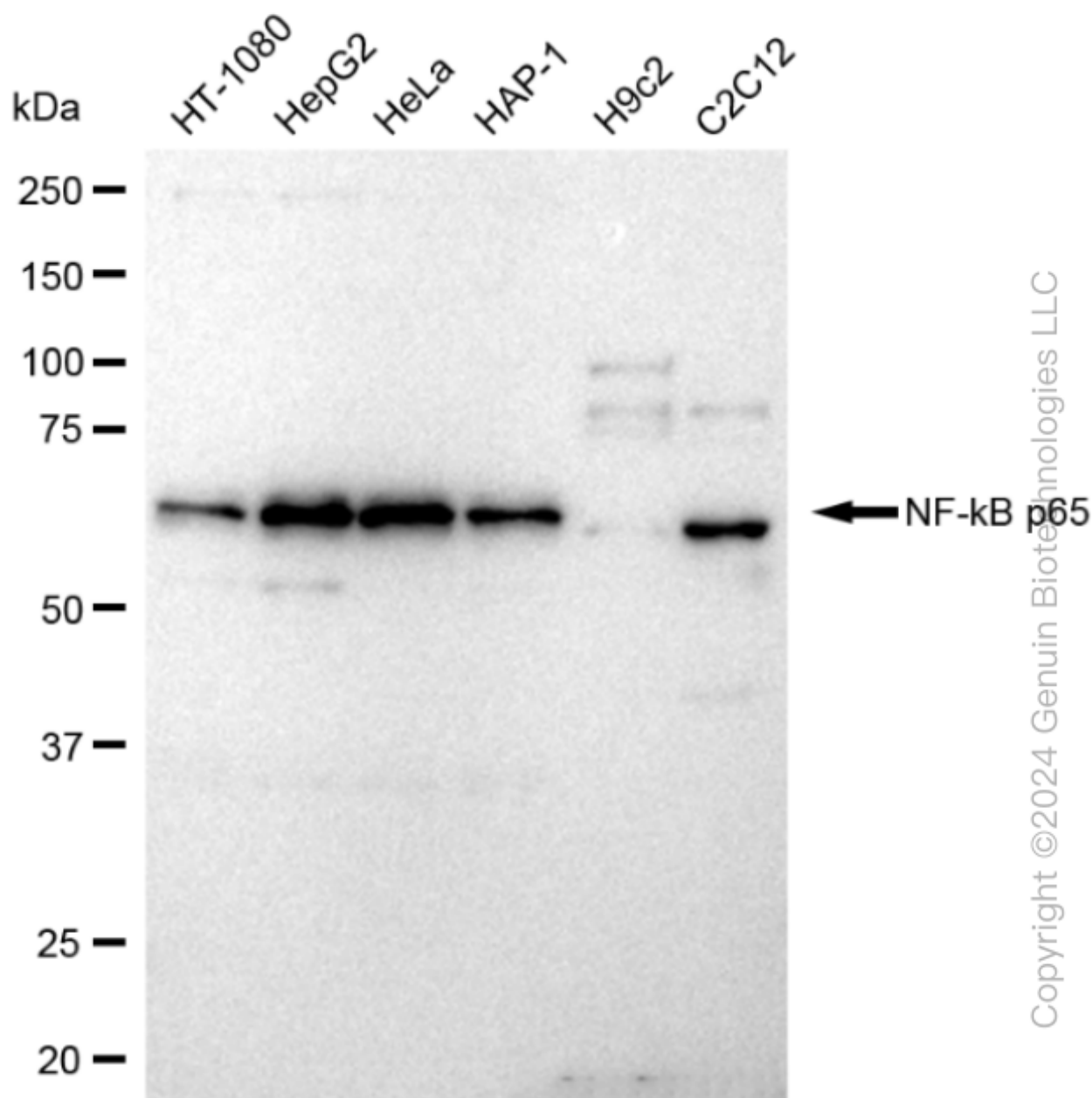
SUPPORT

SUPPORT@GENUINBIOTECH.COM
TEL: +1-540-855-7041

ORDERS

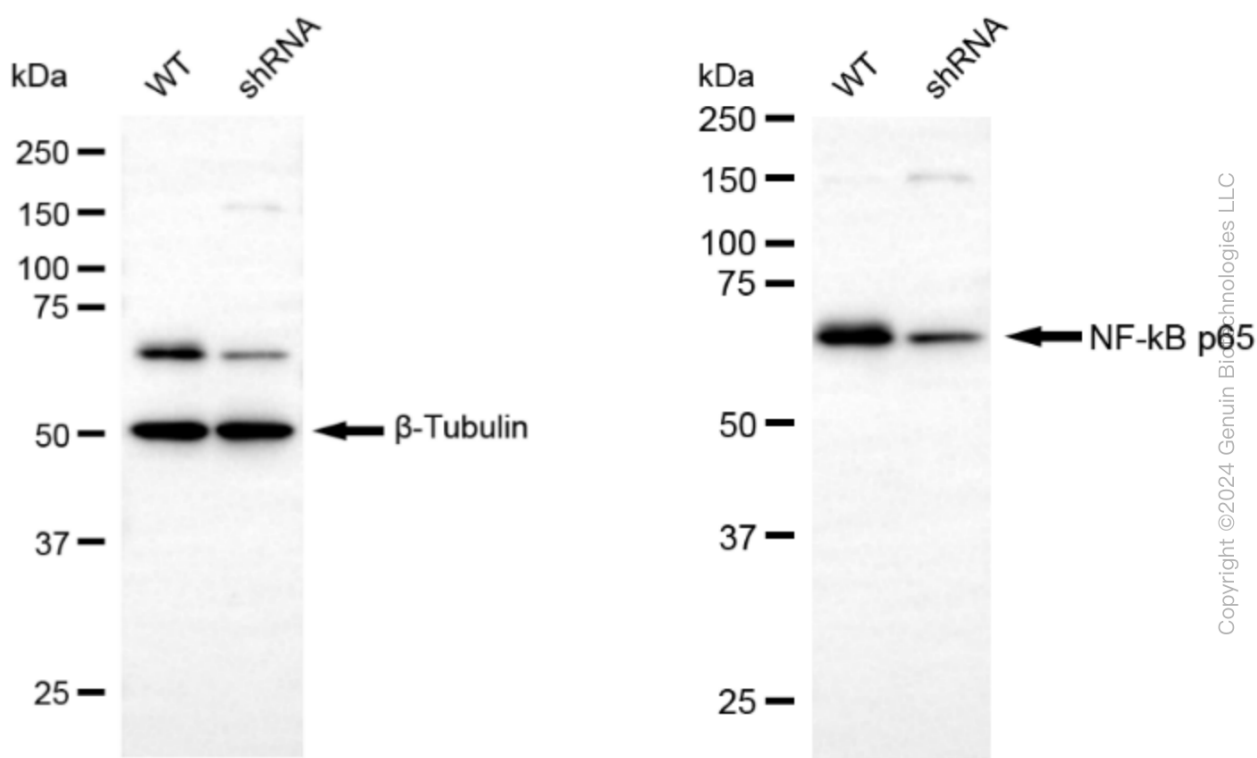
SALES@GENUINBIOTECH.COM
FAX: +1-540-855-7041

WWW.GENUINBIOTECH.COM



Copyright ©2024 Genuin Biotechnologies LLC

Western blotting analysis using anti-NF-kB p65 antibody (Cat#63241). Total cell lysates (30 µg) from various cell lines were loaded and separated by SDS-PAGE. The blot was incubated with anti-NF-kB p65 antibody (Cat#63241, 1:10,000) and HRP-conjugated goat anti-rabbit secondary antibody (Cat#201, 1:20,000) respectively. Image was developed using FeQ™ ECL Substrate Kit (Cat#226).



Western blotting analysis using anti-NF-kB p65 antibody (Cat#63241). NF-kB p65 expression in wild type (WT) and NF-kB p65 shRNA knockdown (KD) HT-1080 cells with 30 µg of total cell lysates. Hsp90 α serves as a loading control. The blot was incubated with anti-NF-kB p65 antibody (Cat#63241, 1:10,000) and HRP-conjugated goat anti-rabbit secondary antibody (Cat#201, 1:20,000) respectively. Image was developed using FeQ™ ECL Substrate Kit (Cat#226).