

KD-Validated Anti-Annexin 4 Rabbit Monoclonal Antibody



Catalog #: 63252

Aliases

ANXA4; Annexin A4; ANX4; Carbohydrate-Binding Protein P33/P41; Placental Anticoagulant Protein II; 35-Beta Calcimedlin; Chromobindin-4; Lipocortin IV; Endonexin I; Protein II; Annexin-4; PAP-II; P32.5; PP4-X; Annexin IV (Placental Anticoagulant Protein II); Epididymis Secretory Protein Li 274; Proliferation-Inducing Protein 28; Proliferation-Inducing Gene 28; Annexin IV; HEL-S-274; PIG28; ZAP36

Background

Gene Name: ANXA4
NCBI Gene Entry: [307](#)
UniProt Entry: [P09525](#)

Application Information

Molecular Weight: Predicted, 36 kDa, observed, 36 kDa
Clonality: Rabbit monoclonal antibody
Clone ID: 24GB4715
Species Reactivity: Human, mouse, rat
Applications Tested: Western blotting (WB), flow cytometry (FCM), immunocytochemistry (IC)

Immunogen

Recombinant protein of human Annexin-4/ANXA4

Isotype

Rabbit IgG

Storage Buffer

Supplied in PBS (pH 7.4) containing 50% glycerol, and 0.02% sodium azide.

Storage

Store at -20 °C for one year.

Recommended Dilutions

Western Blotting (WB): 1:1,000-1:5,000
Flow Cytometry (FCM): 1:2,000
Immunocytochemistry (IC): 1:100-1:1,000

SUPPORT

SUPPORT@GENUINBIOTECH.COM
TEL: +1-540-855-7041

ORDERS

SALES@GENUINBIOTECH.COM
FAX: +1-540-855-7041

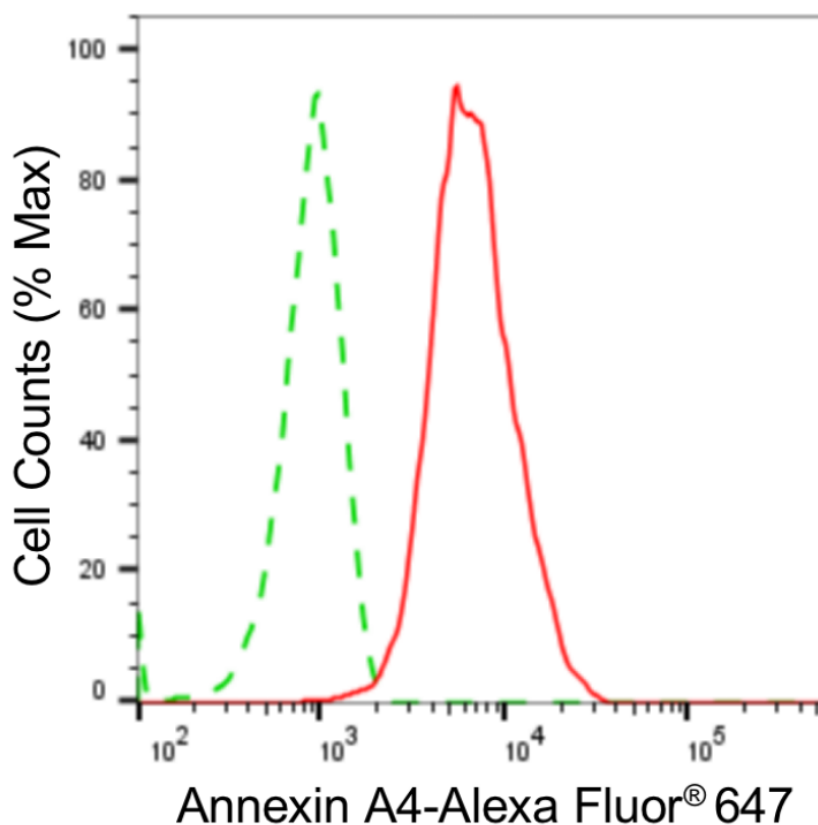
WWW.GENUINBIOTECH.COM

KD-Validated Anti-Annexin 4 Rabbit Monoclonal Antibody

PAGE 2

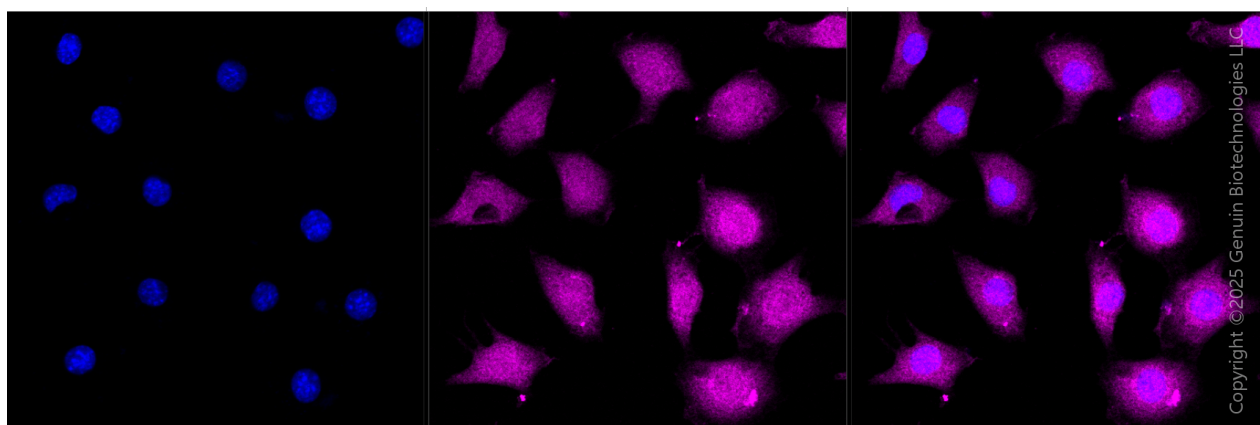
Note: This product is for research use only.

Validation Data



Copyright ©2024 Genuin Biotechnologies LLC

Flow cytometric analysis of Annexin A4 expression in C2C12 cells using anti-Annexin A4 antibody (Cat#63252, 1:2,000). Green, isotype control; red, Annexin A4.



Immunocytochemical staining of C2C12 cells with anti-Annexin A4 antibody (Cat#63252, 1:1,000). Nuclei were stained blue with DAPI; Annexin A4 was stained magenta with Alexa Fluor® 647. Images were taken using Leica stellaris 5. Protein abundance based on laser Intensity and Smart Gain: High. Scale bar, 20 μ m.

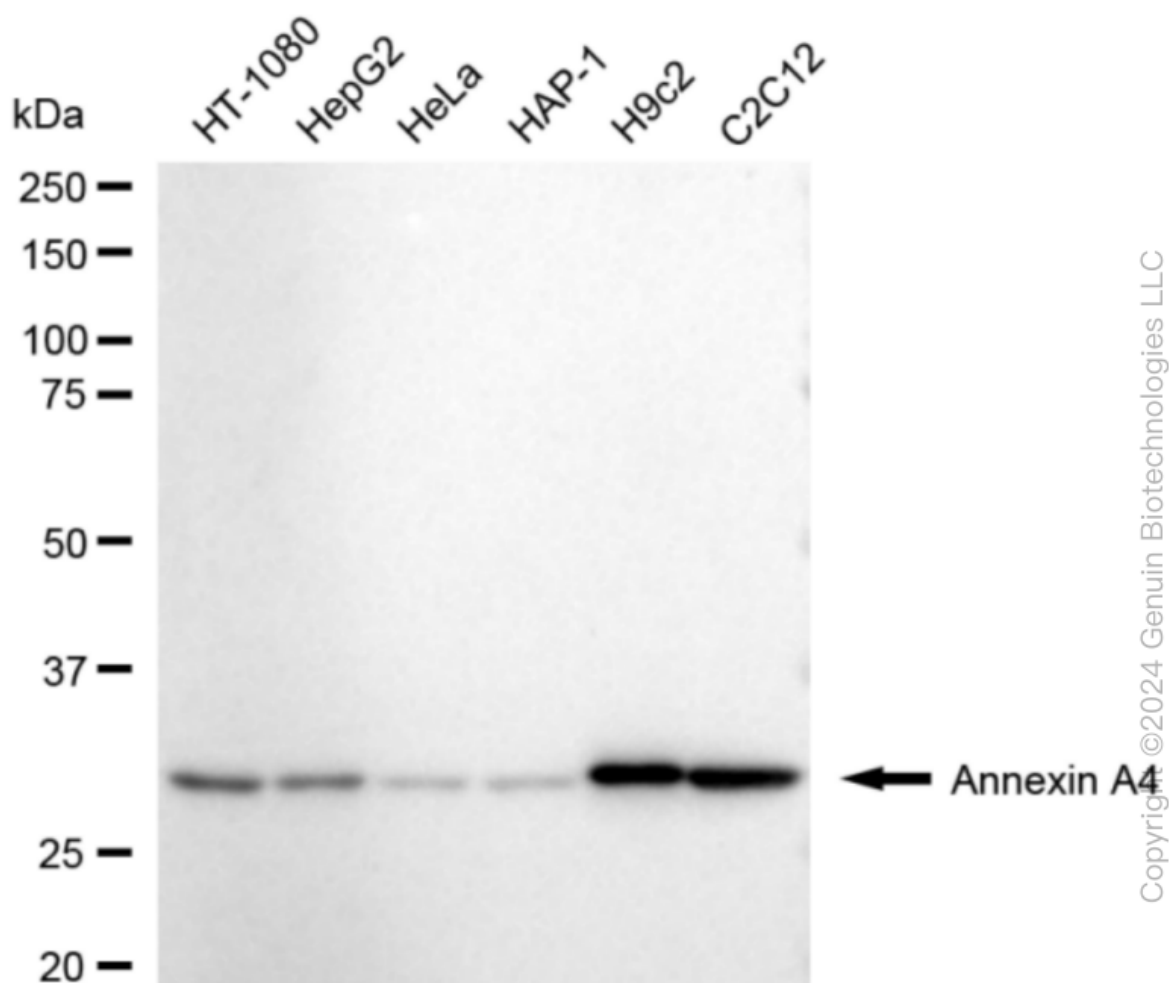
SUPPORT

SUPPORT@GENUINBIOTECH.COM
TEL: +1-540-855-7041

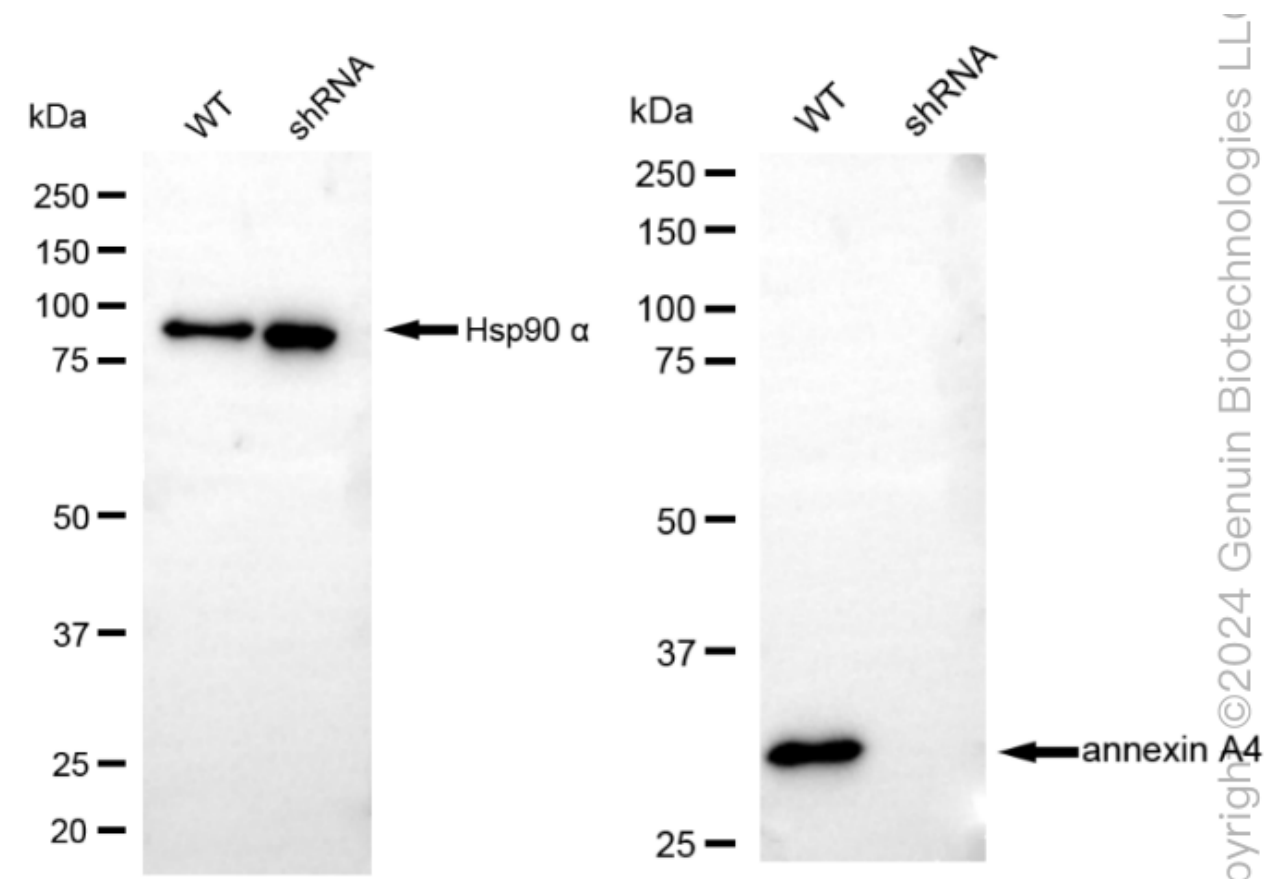
ORDERS

SALES@GENUINBIOTECH.COM
FAX: +1-540-855-7041

WWW.GENUINBIOTECH.COM



Western blotting analysis using anti-annexin A4 antibody (Cat#63252). Total cell lysates (30 μ g) from various cell lines were loaded and separated by SDS-PAGE. The blot was incubated with anti-annexin A4 antibody (Cat#63252, 1:5,000) and HRP-conjugated goat anti-rabbit secondary antibody (Cat#201, 1:20,000) respectively. Image was developed using FeQ™ ECL Substrate Kit (Cat#226).



Western blotting analysis using anti-annexin A4 antibody (Cat#63252). Annexin A4 expression in wild-type (WT) and annexin A4 (ANXA4) shRNA knockdown (KD) HeLa cells with 20 µg of total cell lysates. Hsp90 α serves as a loading control. The blot was incubated with anti-annexin A4 antibody (Cat#63252, 1:5,000) and HRP-conjugated goat anti-rabbit secondary antibody (Cat#201, 1:20,000) respectively. Image was developed using NaQ™ ECL Substrate Kit (Cat#716).