

# KD-Validated Anti-Arginyltransferase 1 Rabbit Monoclonal Antibody



**Catalog #: 63253**

## Aliases

ATE1; Arginyltransferase 1; Arginine-TRNA--Protein Transferase 1; Arginyl-TRNA--Protein Transferase 1; R-Transferase 1; EC 2.3.2.8; Arginyl-TRNA-Protein Transferase

## Background

Gene Name: ATE1

NCBI Gene Entry: [11101](#)

UniProt Entry: [O95260](#)

## Application Information

Molecular Weight: Predicted, 59 kDa; observed, 59 kDa

Clonality: Rabbit monoclonal antibody

Clone ID: 24GB4720

Species Reactivity: Human, mouse, rat

Applications Tested: Western blotting (WB), flow cytometry (FCM), immunocytochemistry (IC)

## Immunogen

A synthesized peptide derived from human ATE1

## Isotype

Rabbit IgG

## Storage Buffer

Supplied in PBS (pH 7.4) containing 50% glycerol, and 0.02% sodium azide.

## Storage

Store at -20 °C for one year.

## Recommended Dilutions

Western Blotting (WB): 1:1,000-1:5,000

Flow Cytometry (FCM): 1:2,000

Immunocytochemistry (IC): 1:100-1:1,000

**Note:** This product is for research use only.

## Validation Data

---

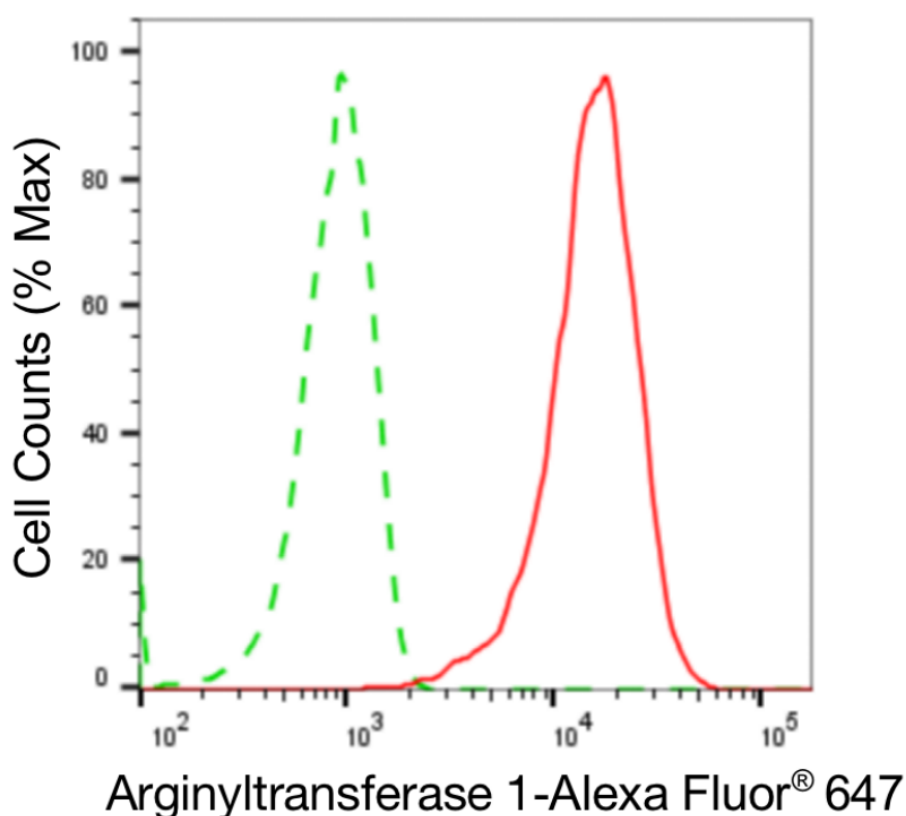
### SUPPORT

SUPPORT@GENUINBIOTECH.COM  
TEL: +1-540-855-7041

### ORDERS

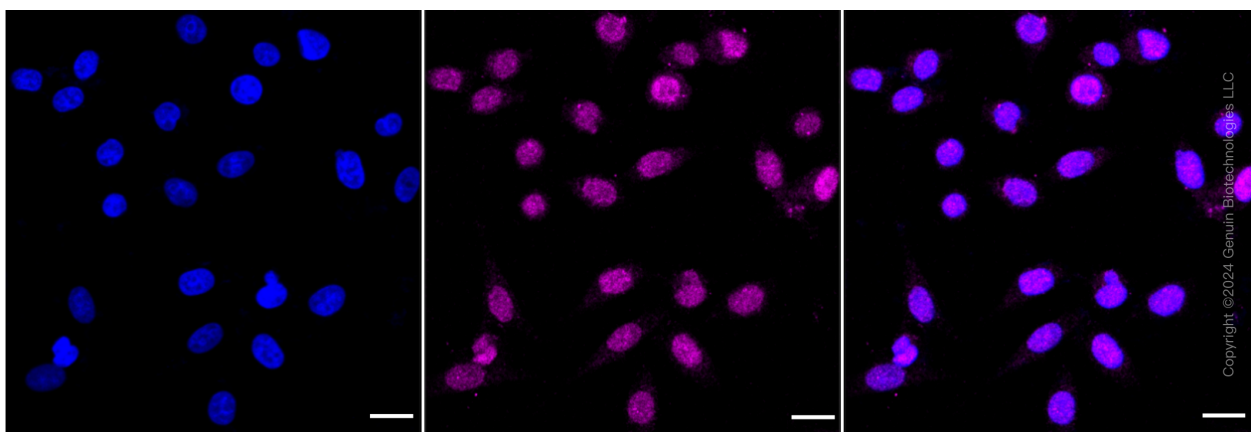
SALES@GENUINBIOTECH.COM  
FAX: +1-540-855-7041

[WWW.GENUINBIOTECH.COM](http://WWW.GENUINBIOTECH.COM)

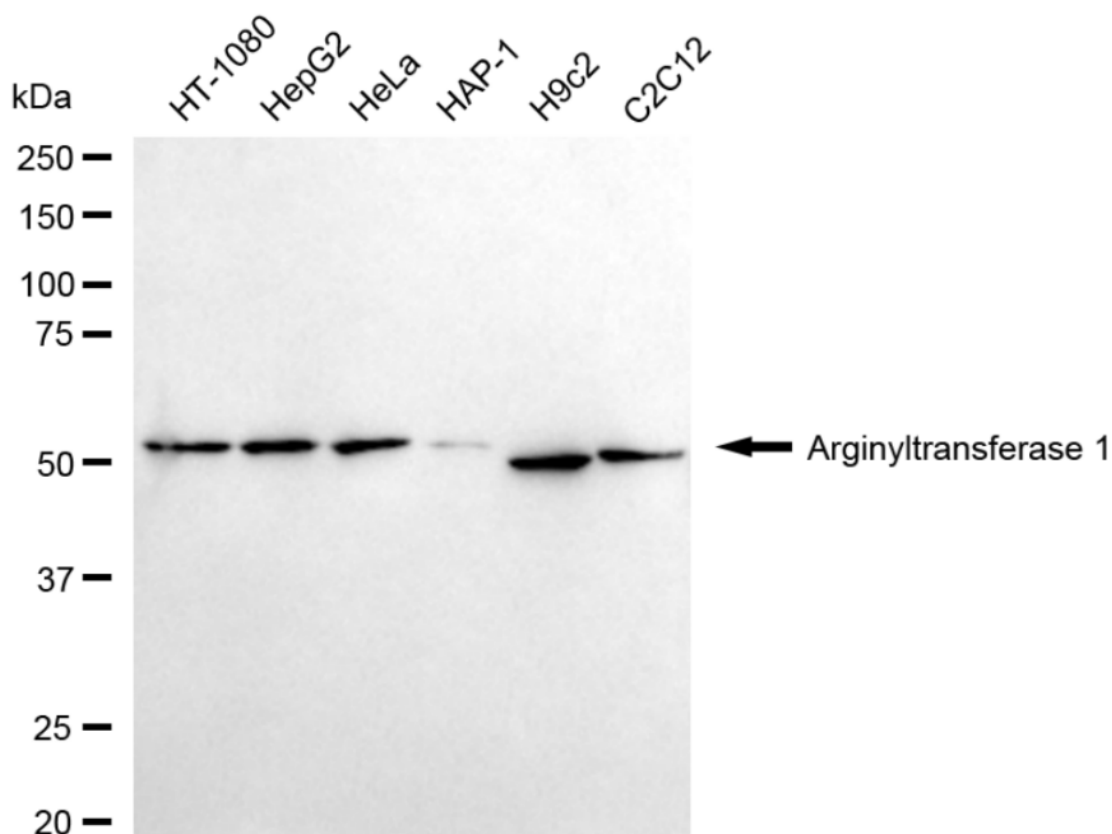


Copyright ©2024 Genuin Biotechnologies LLC

Flow cytometric analysis of Arginyltransferase 1 expression in HepG2 cells using anti-Arginyltransferase 1 antibody (Cat#63253, 1:2,000). Green, isotype control; red, Arginyltransferase 1.



Immunocytochemical staining of HepG2 cells with anti-arginyltransferase 1 antibody (Cat#63253, 1:1,000). Nuclei were stained blue with DAPI; Arginyltransferase 1 was stained magenta with Alexa Fluor® 647. Images were taken using Leica stellaris 5. Protein abundance based on laser Intensity and smart gain: Low. Scale bar: 20  $\mu$ m.

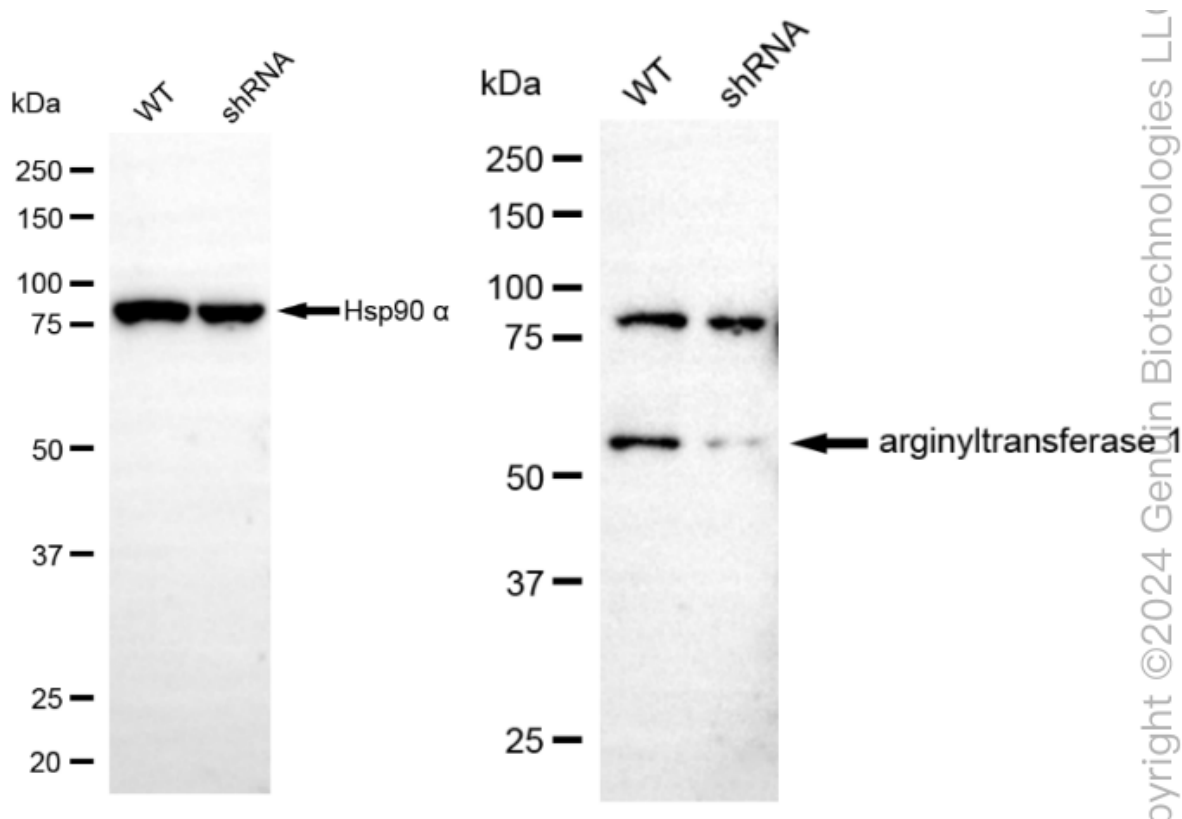


Copyright ©2024 Genuin Biotechnologies LLC

Western blotting analysis using anti-arginyltransferase 1 antibody (Cat#63253). Total cell lysates (30 µg) from various cell lines were loaded and separated by SDS-PAGE. The blot was incubated with anti-arginyltransferase 1 antibody (Cat#63253, 1:5,000) and HRP-conjugated goat anti-rabbit secondary antibody (Cat#201, 1:20,000) respectively. Image was developed using NaQ™ ECL Substrate Kit (Cat#716).

## KD-Validated Anti-Arginyltransferase 1 Rabbit Monoclonal Antibody

PAGE 4



Western blotting analysis using anti-arginyltransferase 1 antibody (Cat#63253). Arginyltransferase 1 expression in wild type (WT) and arginyltransferase 1 (ATE1) shRNA knockdown (KD) HeLa cells with 20 µg of total cell lysates. Hsp90 α serves as a loading control. The blot was incubated with anti-arginyltransferase 1 antibody (Cat#63253, 1:5,000) and HRP-conjugated goat anti-rabbit secondary antibody (Cat#201, 1:20,000) respectively. Image was developed using NaQ™ ECL Substrate Kit (Cat#716).

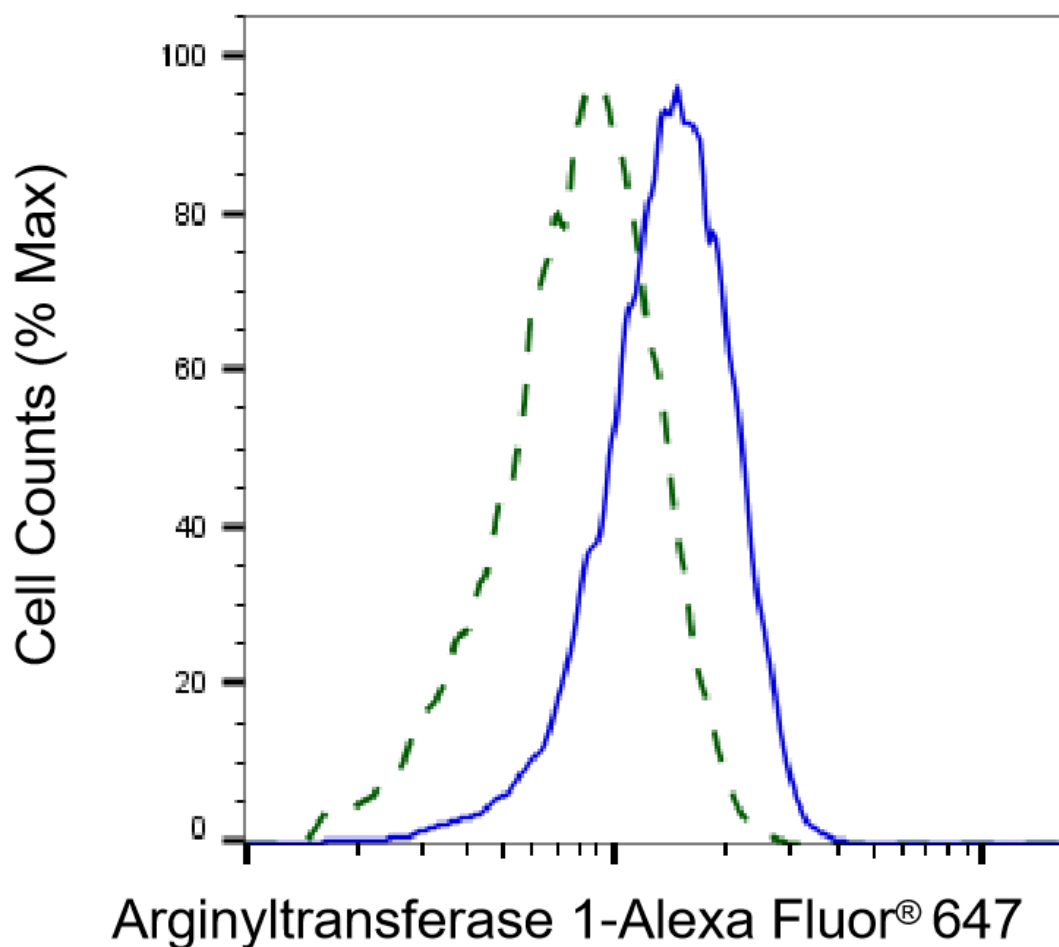
### SUPPORT

SUPPORT@GENUINBIOTECH.COM  
TEL: +1-540-855-7041

### ORDERS

SALES@GENUINBIOTECH.COM  
FAX: +1-540-855-7041

[WWW.GENUINBIOTECH.COM](http://WWW.GENUINBIOTECH.COM)



Copyright ©2025 Genuin Biotechnologies LLC

Validation of Arginyltransferase 1 knockdown using flow cytometry. Wild-type(WT, Blue) and knockdown(KD, Green) HeLa cells were stained with anti-Arginyltransferase 1 antibody (Cat#63253, 1:2,000) and analyzed using BD flow cytometer.