

KD-Validated Anti-Caldesmon 1 Rabbit Monoclonal Antibody



Catalog #: 63256

Aliases

CALD1; Caldesmon 1; CDM; H-CAD; LCAD; H-CD; Caldesmon; Testis Secretory SpermBinding Protein Li 227n; NAG22; HCAD; LCAD; CAD

Background

Gene Name: CALD1

NCBI Gene Entry: [800](#)

UniProt Entry: [Q05682](#)

Application Information

Molecular Weight: Predicted, 93 kDa, observed, 70-80 kDa

Clonality: Rabbit monoclonal antibody

Clone ID: 24GB4735

Species Reactivity: Human, mouse, rat

Applications Tested: Western blotting (WB), flow cytometry (FCM), immunocytochemistry (IC)

Immunogen

A synthesized peptide derived from human Caldesmon

Isotype

Rabbit IgG

Storage Buffer

Supplied in PBS (pH 7.4) containing 50% glycerol, and 0.02% sodium azide.

Storage

Store at -20 °C for one year.

Recommended Dilutions

Western Blotting (WB): 1:1,000-1:5,000

Flow Cytometry (FCM): 1:2,000

Immunocytochemistry (IC): 1:100-1:1,000

Note: This product is for research use only.

Validation Data

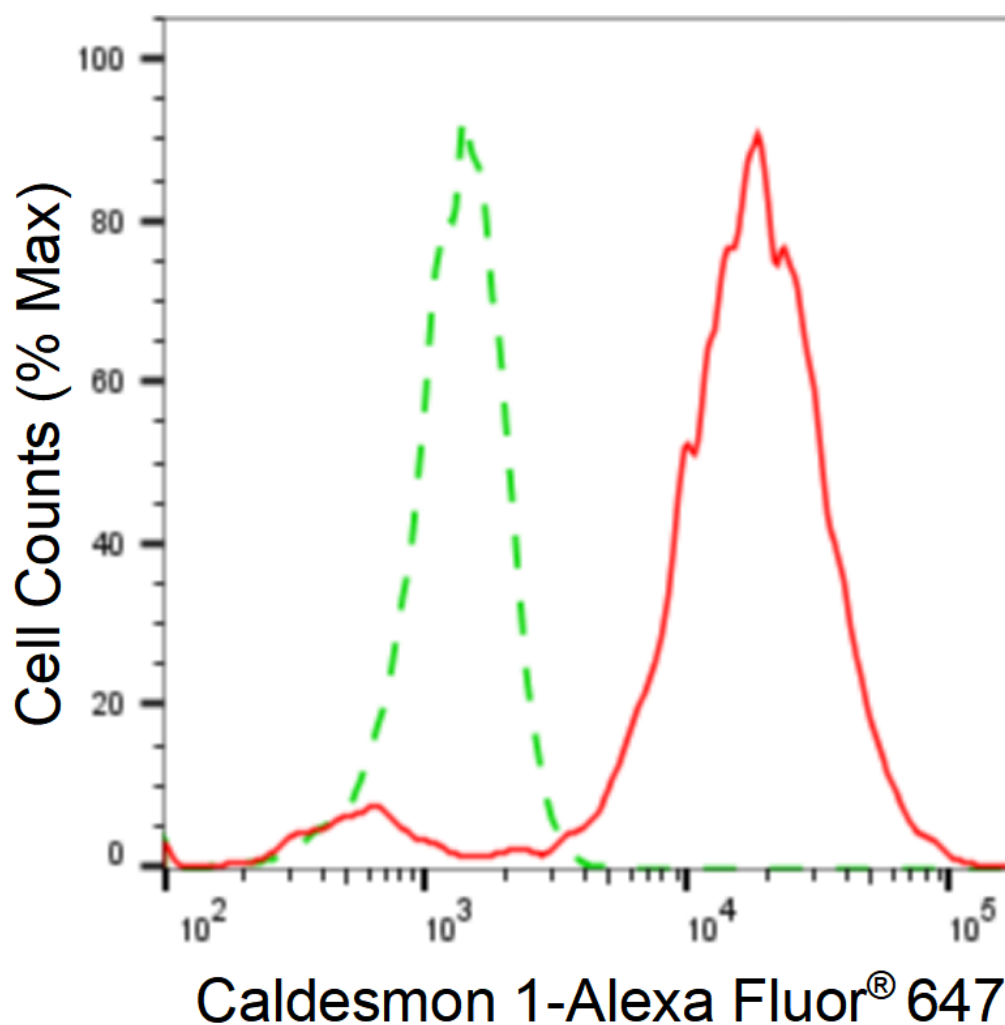
SUPPORT

SUPPORT@GENUINBIOTECH.COM
TEL: +1-540-855-7041

ORDERS

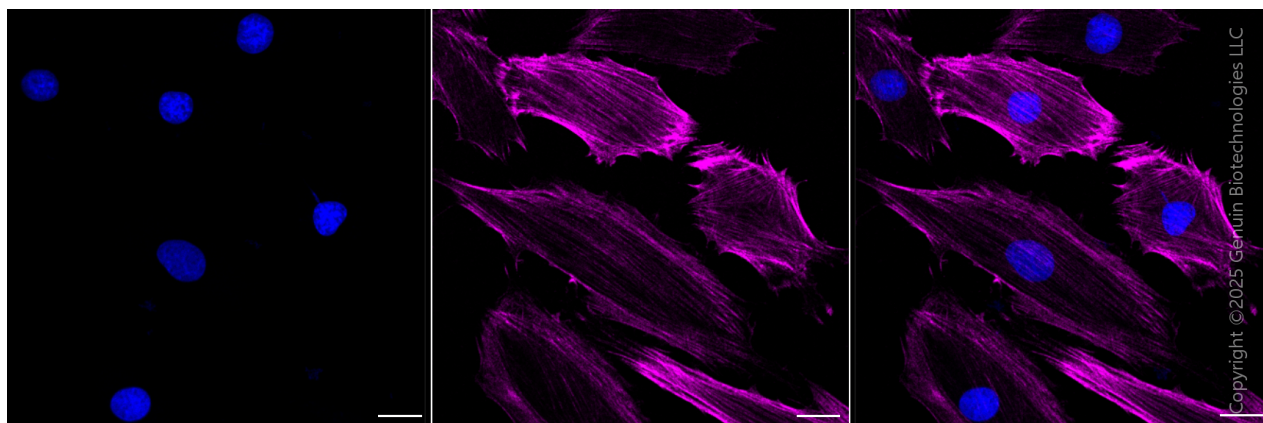
SALES@GENUINBIOTECH.COM
FAX: +1-540-855-7041

WWW.GENUINBIOTECH.COM



Copyright ©2025 Genuin Biotechnologies LLC

Flow cytometric analysis of caldesmon 1 expression in H9c2 cells using anti-caldesmon 1 antibody (Cat#63256, 1:2,000). Green, isotype control; red, caldesmon 1.



Immunocytochemical staining of H9C2 cells with anti-Caldesmon 1 antibody (Cat#63256, 1:1,000). Nuclei were stained blue with DAPI; Caldesmon 1 was stained magenta with Alexa Fluor® 647. Images were taken using Leica stellaris 5. Protein abundance based on laser Intensity

SUPPORT

SUPPORT@GENUINBIOTECH.COM
TEL: +1-540-855-7041

ORDERS

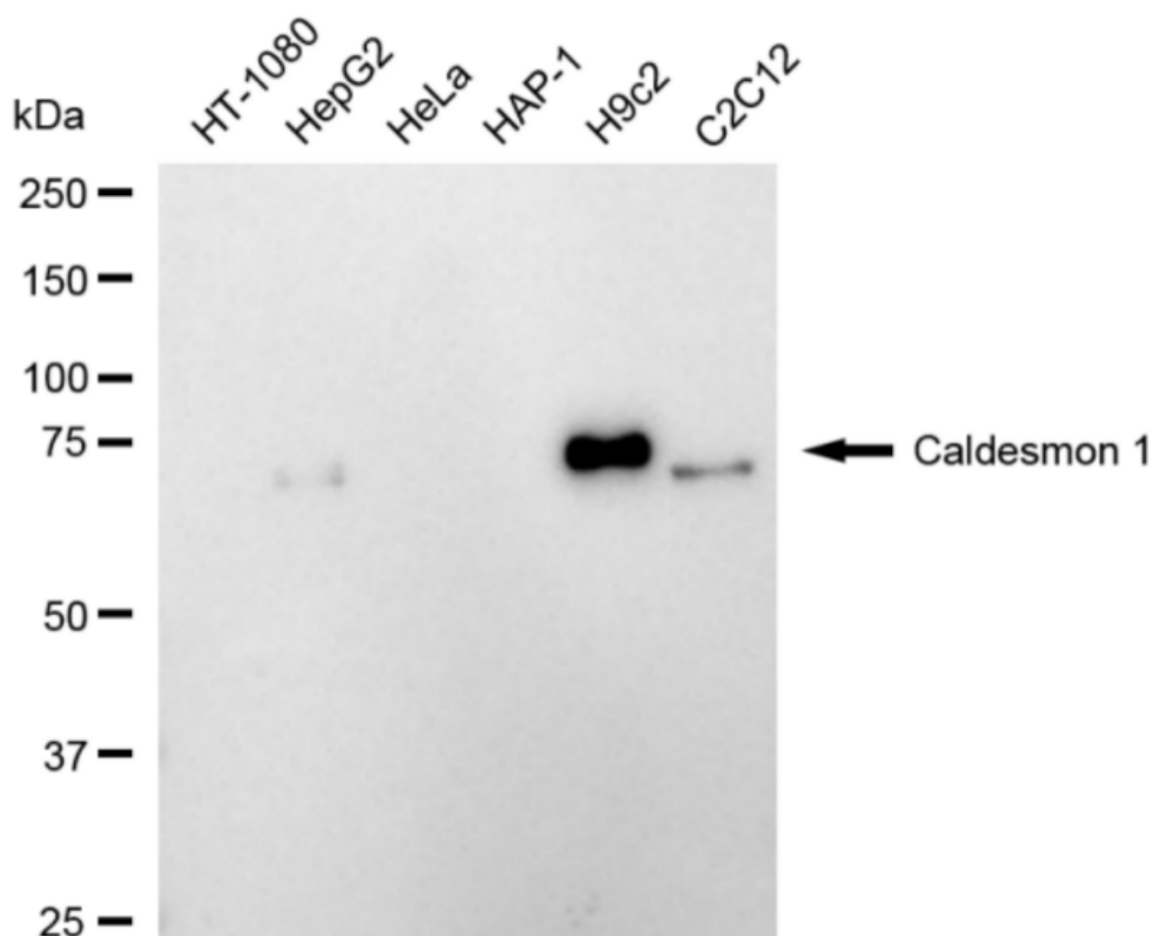
SALES@GENUINBIOTECH.COM
FAX: +1-540-855-7041

WWW.GENUINBIOTECH.COM

KD-Validated Anti-Caldesmon 1 Rabbit Monoclonal Antibody

PAGE 3

and smart gain□Medium. Scale bar, 20 μm.



Copyright ©2024 Genuin Biotechnologies LLC

Western blotting analysis using anti-caldesmon 1 antibody (Cat#63256). Total cell lysates (30 μg) from various cell lines were loaded and separated by SDS-PAGE. The blot was incubated with anti-caldesmon 1 antibody (Cat#63256, 1:5,000) and HRP-conjugated goat anti-rabbit secondary antibody (Cat#201, 1:20,000) respectively. Image was developed using NaQ™ ECL Substrate Kit (Cat#716).

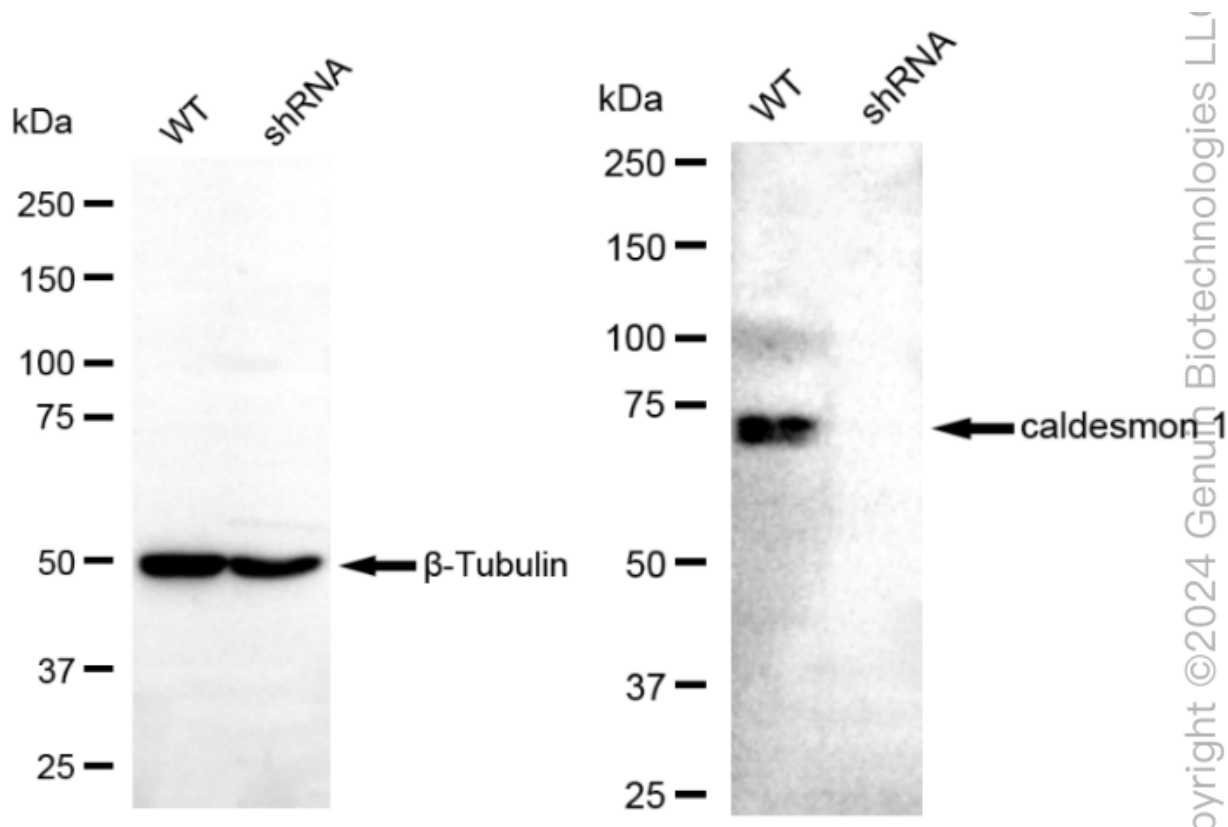
SUPPORT

SUPPORT@GENUINBIOTECH.COM
TEL: +1-540-855-7041

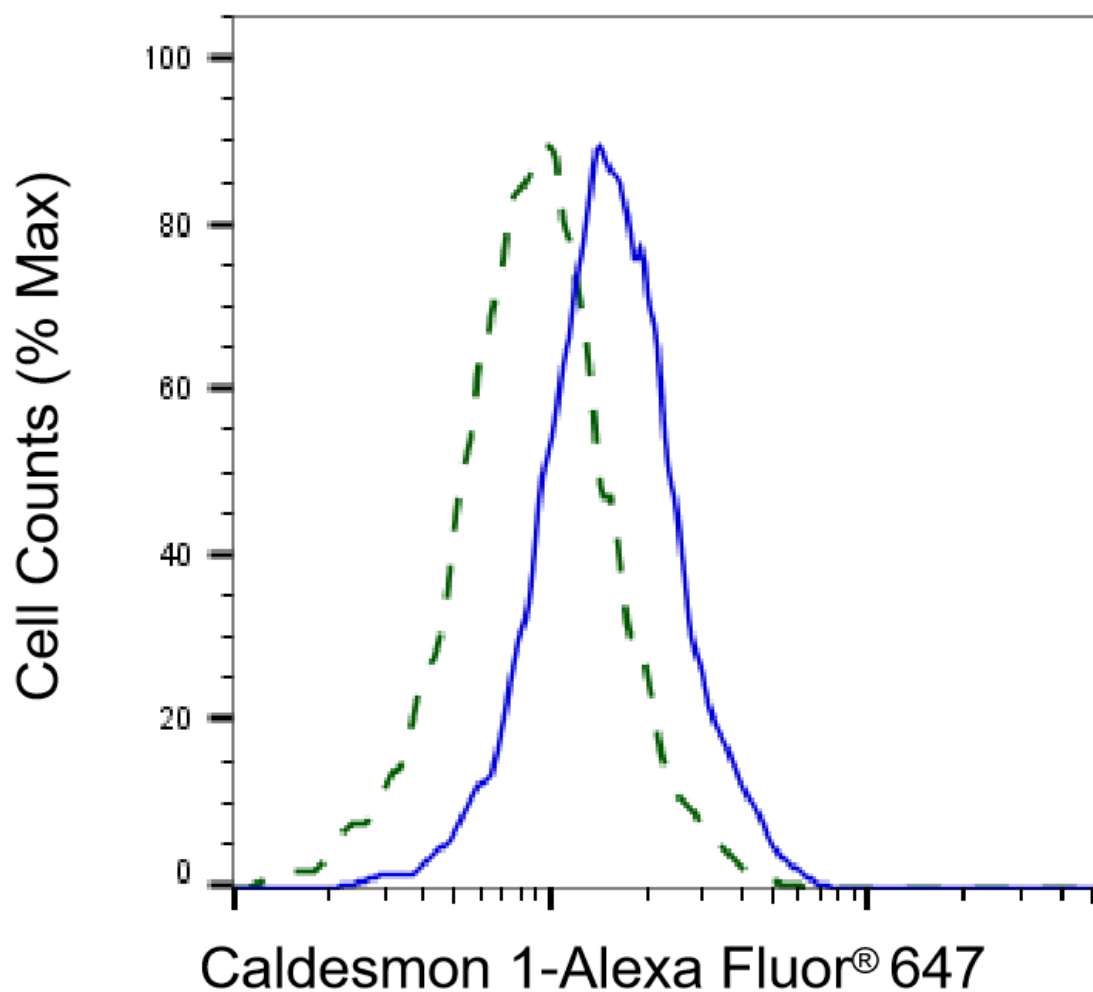
ORDERS

SALES@GENUINBIOTECH.COM
FAX: +1-540-855-7041

WWW.GENUINBIOTECH.COM

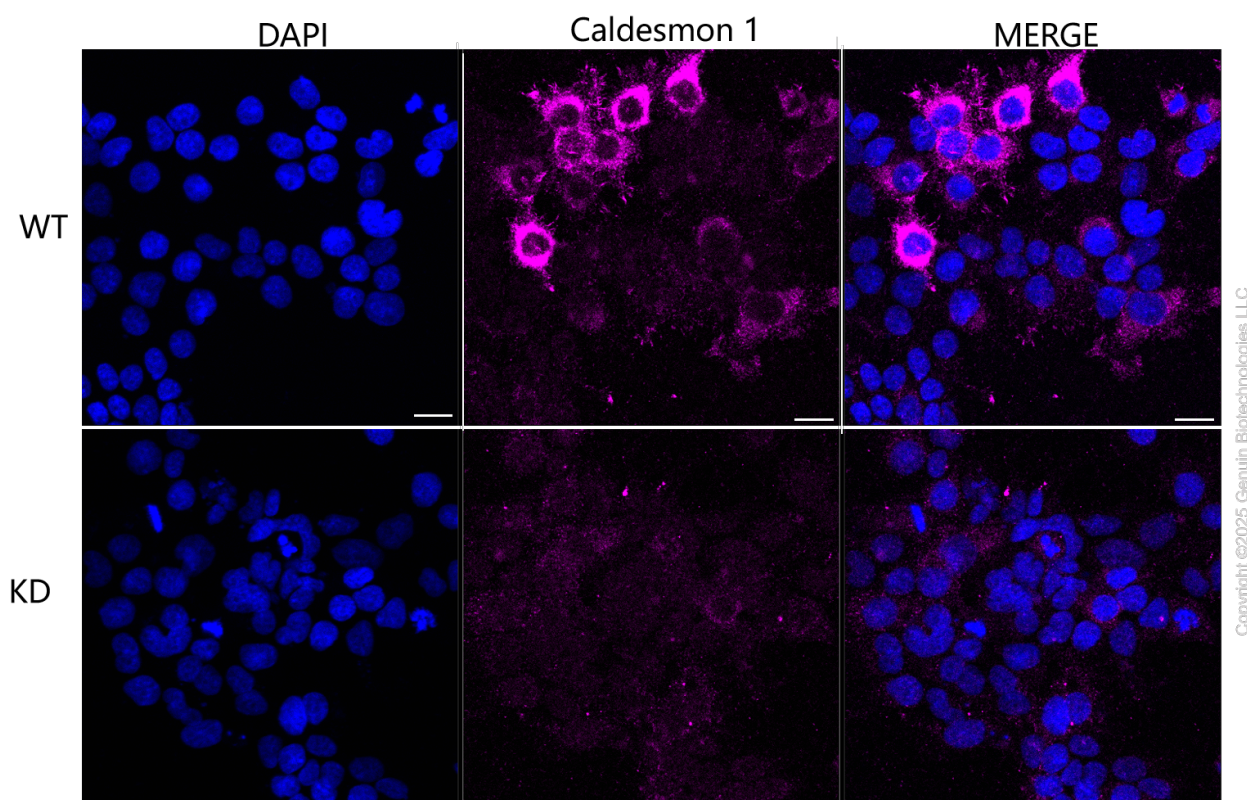


Western blotting analysis using anti-caldesmon 1 antibody (Cat#63256). Caldesmon 1 expression in wild type (WT) and caldesmon 1 (CALD1) shRNA knockdown (KD) HeLa cells with 30 µg of total cell lysates. β-Tubulin serves as a loading control. The blot was incubated with anti-caldesmon 1 antibody (Cat#63256, 1:5,000) and HRP-conjugated goat anti-rabbit secondary antibody (Cat#201, 1:20,000) respectively. Image was developed using FeQ™ ECL Substrate Kit (Cat#226).



Copyright ©2025 Genuin Biotechnologies LLC

Validation of Caldesmon 1 knockdown using flow cytometry. Wild-type(WT, Blue) and knockdown(KD, Green) HeLa cells were stained with anti-Caldesmon 1 antibody (Cat#63256, 1:2,000) and analyzed using BD flow cytometer.



Immunocytochemical staining of HeLa cells using anti-Caldesmon 1 antibody (Cat#63256, 1:1,000), Top panel: wild-type (WT); Bottom panel: Caldesmon 1 shRNA knockdown (KD). Nuclei were stained blue with DAPI; Caldesmon 1 was stained magenta with Alexa Fluor® 647. Scale bar, 20 μ m. Permeabilization: Triton.