

KD-Validated Anti-Caspase 8 Rabbit Monoclonal Antibody



Catalog #: 63257

Aliases

CASP8; Caspase 8; FLICE; MCH5; MACH; Casp-8; Caspase 8, Apoptosis-Related Cysteine Peptidase; Caspase 8, Apoptosis-Related Cysteine Protease; MORT1-Associated Ced-3 Homolog; ICE-Like Apoptotic Protease 5; Apoptotic Cysteine Protease; Apoptotic Protease Mch-5; FADD-Like ICE; Caspase-8; CAP4; FADD-Homologous ICE/CED-3-Like Protease; FADD-Homologous ICE/Ced-3-Like Protease; MACH-Beta-1/2/3/4 Protein; MACH-Alpha-1/2/3 Protein; EC 3.4.22.61; ALPS2B; CASP-8

Background

Gene Name: CASP8

NCBI Gene Entry: [841](#)

UniProt Entry: [Q14790](#)

Application Information

Molecular Weight: Predicted, 55 kDa, observed, 55 kDa

Clonality: Rabbit monoclonal antibody

Clone ID: 24GB4740

Species Reactivity: Human

Applications Tested: Western blotting (WB), flow cytometry (FCM), immunocytochemistry (IC)

Immunogen

A synthesized peptide derived from human Caspase-8

Isotype

Rabbit IgG

Storage Buffer

Supplied in PBS (pH 7.4) containing 50% glycerol, and 0.02% sodium azide.

Storage

Store at -20 °C for one year.

Recommended Dilutions

Western Blotting (WB): 1:1,000-1:5,000

Flow Cytometry (FCM): 1:2,000

Immunocytochemistry (IC): 1:100-1:1,000

SUPPORT

SUPPORT@GENUINBIOTECH.COM
TEL: +1-540-855-7041

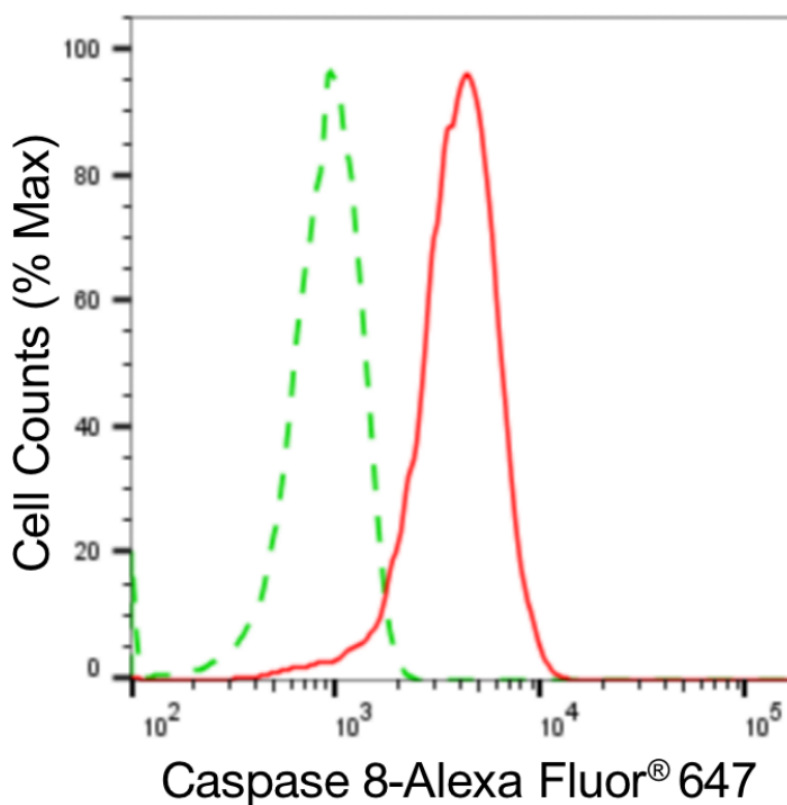
ORDERS

SALES@GENUINBIOTECH.COM
FAX: +1-540-855-7041

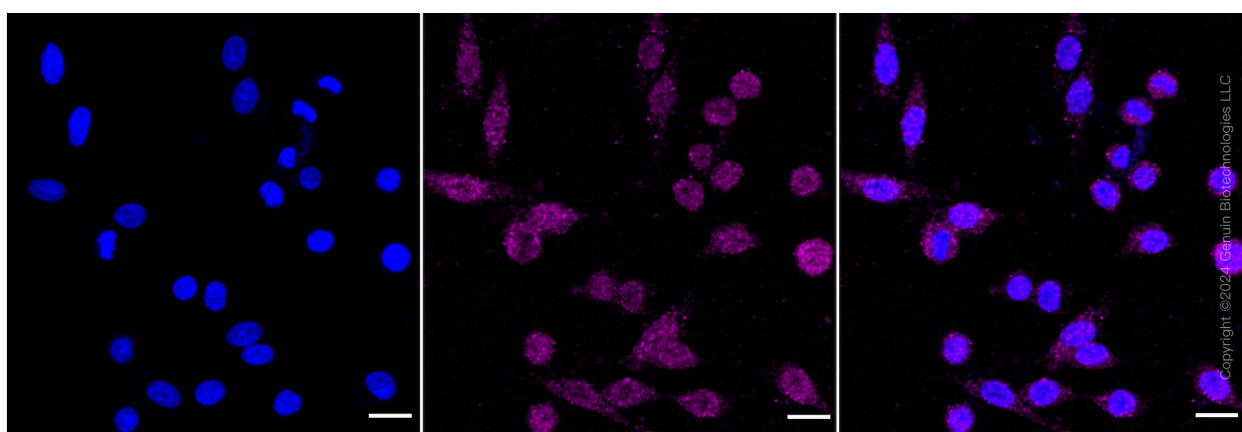
WWW.GENUINBIOTECH.COM

Note: This product is for research use only.

Validation Data



Copyright ©2024 Genuin Biotechnologies LLC



Copyright ©2024 Genuin Biotechnologies LLC

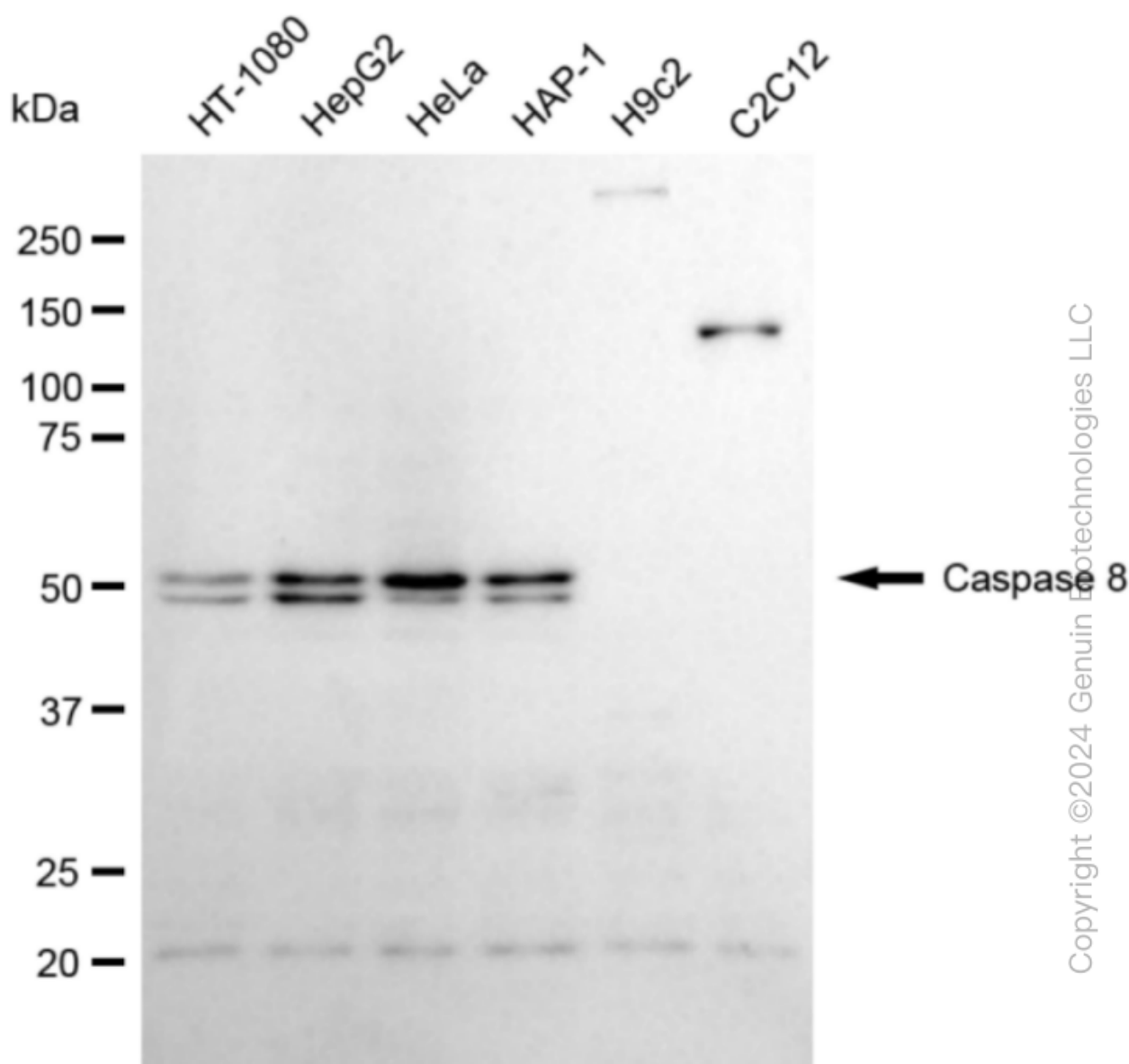
SUPPORT

SUPPORT@GENUINBIOTECH.COM
TEL: +1-540-855-7041

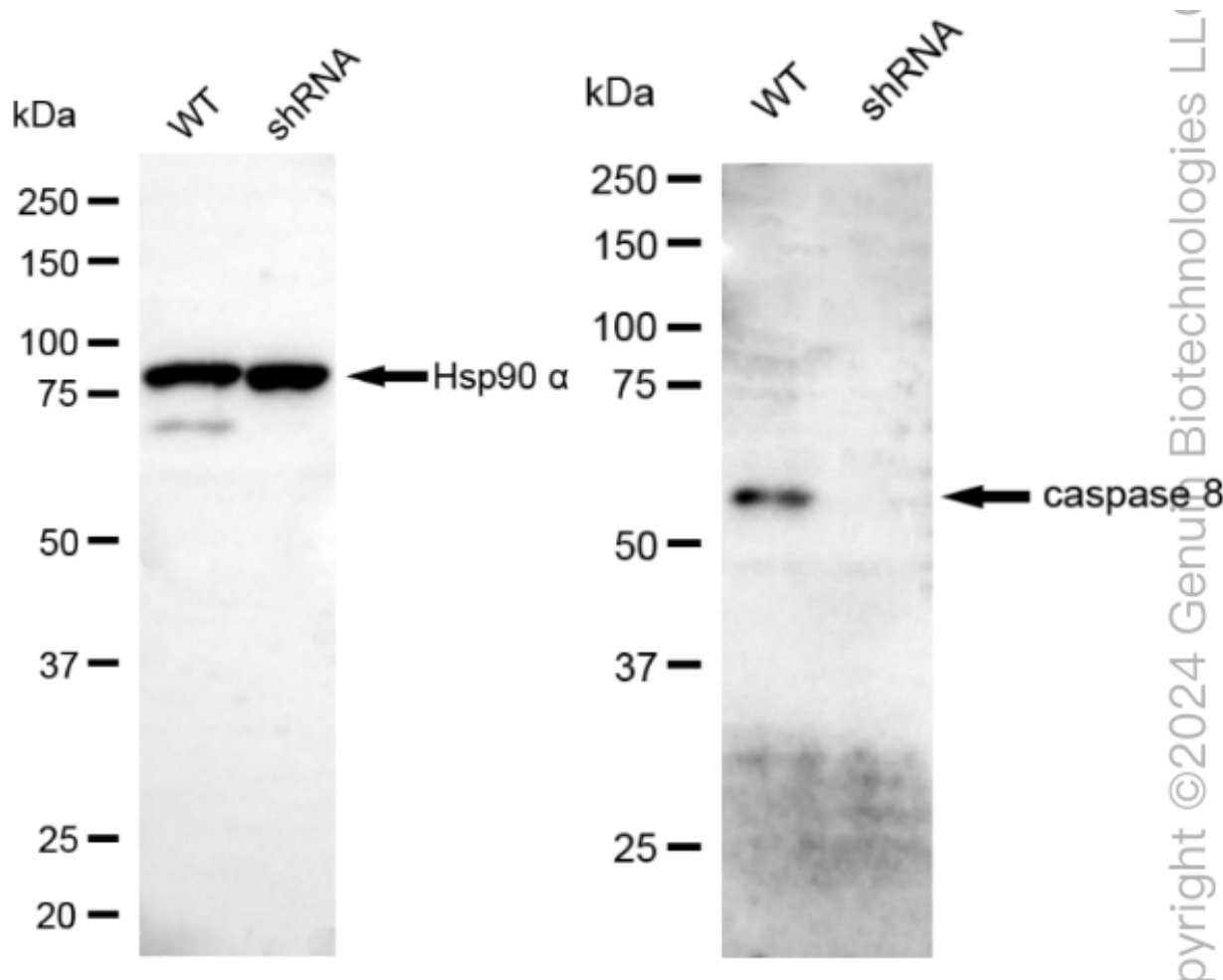
ORDERS

SALES@GENUINBIOTECH.COM
FAX: +1-540-855-7041

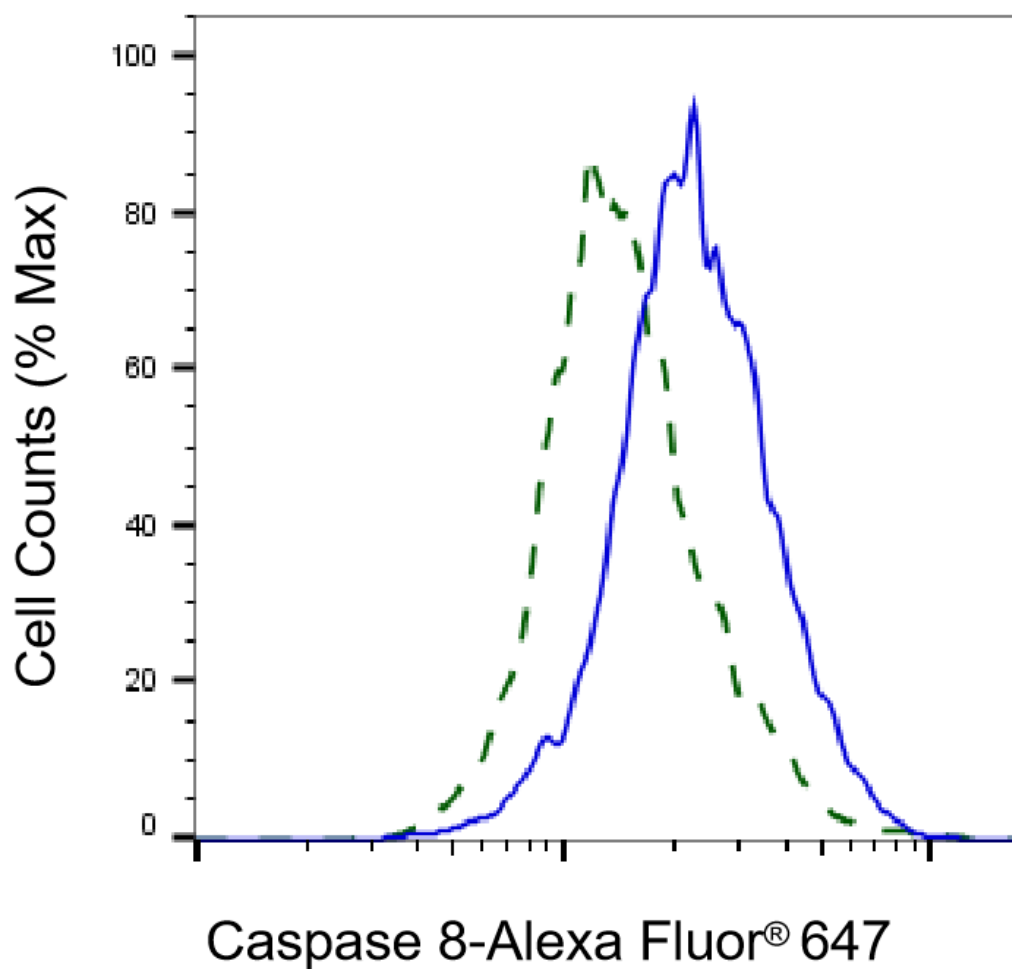
WWW.GENUINBIOTECH.COM



Western blotting analysis using anti-caspase 8 antibody (Cat#63257). Total cell lysates (30 µg) from various cell lines were loaded and separated by SDS-PAGE. The blot was incubated with anti-caspase 8 antibody (Cat#63257, 1:5,000) and HRP-conjugated goat anti-rabbit secondary antibody (Cat#201, 1:20,000) respectively. Image was developed using NaQ™ ECL Substrate Kit (Cat#716).



Western blotting analysis using anti-caspase 8 antibody (Cat#63257). Caspase 8 expression in wild type (WT) and caspase 8 (CASP8) shRNA knockdown (KD) HeLa cells with 30 µg of total cell lysates. Hsp90 α serves as a loading control. The blot was incubated with anti-caspase 8 antibody (Cat#63257, 1:5,000) and HRP-conjugated goat anti-rabbit secondary antibody (Cat#201, 1:20,000) respectively. Image was developed using FeQ™ ECL Substrate Kit (Cat#226).



Copyright ©2025 Genuin Biotechnologies LLC

Validation of Caspase 8 knockdown using flow cytometry. Wild-type(WT, Blue) and knockdown(KD, Green) HeLa cells were stained with anti-Caspase 8 antibody (Cat#63257, 1:2,000) and analyzed using BD flow cytometer.