

KD-Validated Anti-Cyclin E1 Rabbit Monoclonal Antibody



Catalog #: 63258

Aliases

CCNE1; Cyclin E1; CCNE; G1/S-Specific Cyclin-E1; Cyclin Es; Cyclin Et; PCCNE1

Background

Gene Name: CCNE1

NCBI Gene Entry: [898](#)

UniProt Entry: [P24864](#)

Application Information

Molecular Weight: Predicted, 47 kDa, observed, 47 kDa

Clonality: Rabbit monoclonal antibody

Clone ID: 24GB4745

Species Reactivity: Human

Applications Tested: Western blotting (WB), flow cytometry (FCM), immunocytochemistry (IC)

Immunogen

A synthesized peptide derived from human Cyclin E1

Isotype

Rabbit IgG

Storage Buffer

Supplied in PBS (pH 7.4) containing 50% glycerol, and 0.02% sodium azide.

Storage

Store at -20 °C for one year.

Recommended Dilutions

Western Blotting (WB): 1:1,000-1:5,000

Flow Cytometry (FCM): 1:2,000

Immunocytochemistry (IC): 1:100-1:1,000

Note: This product is for research use only.

Validation Data

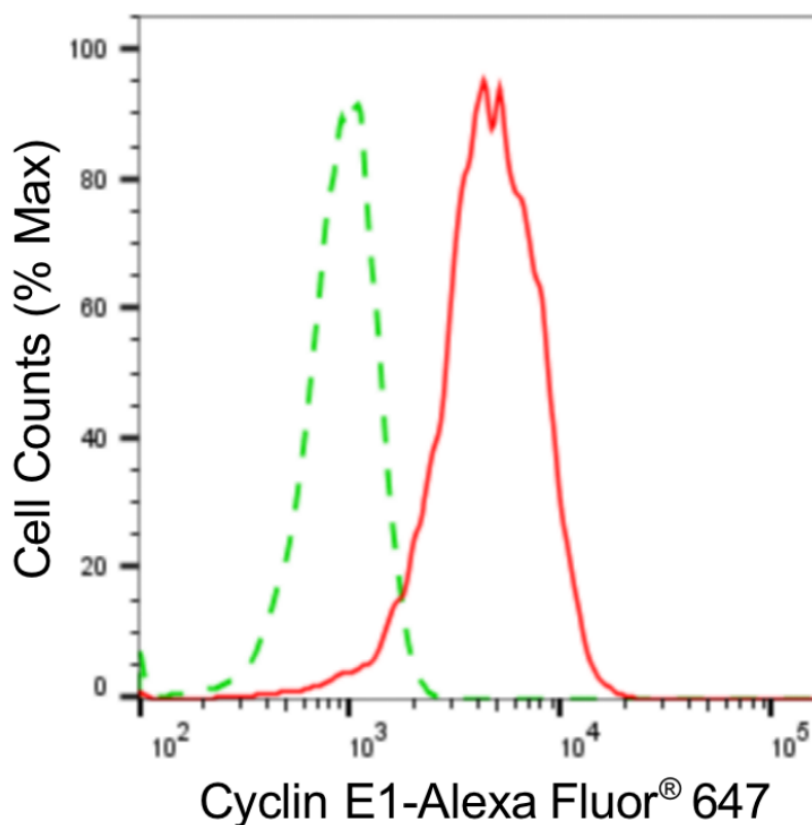
SUPPORT

SUPPORT@GENUINBIOTECH.COM
TEL: +1-540-855-7041

ORDERS

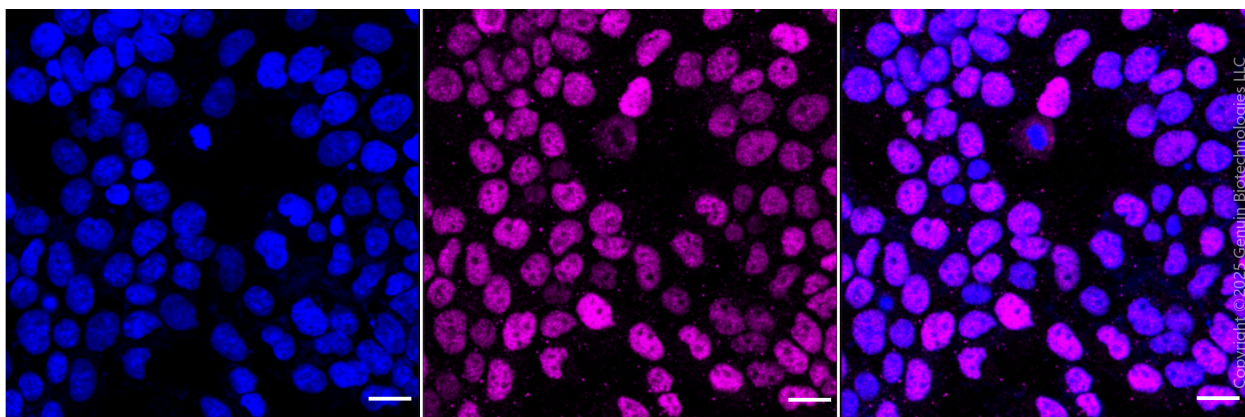
SALES@GENUINBIOTECH.COM
FAX: +1-540-855-7041

WWW.GENUINBIOTECH.COM



Copyright ©2024 Genuin Biotechnologies LLC

Flow cytometric analysis of Cyclin E1 expression in HeLa cells using anti-Cyclin E1 antibody (Cat#63258, 1:2,000). Green, isotype control; red, Cyclin E1.



Immunocytochemical staining of HeLa cells with cyclin E1 antibody (Cat#63258, 1:1,000). Nuclei were stained blue with DAPI; Cyclin E1 was stained magenta with Alexa Fluor® 647. Images were taken using Leica stellaris 5. Protein abundance based on laser Intensity and smart gain: Medium. Scale bar: 20 μ m.

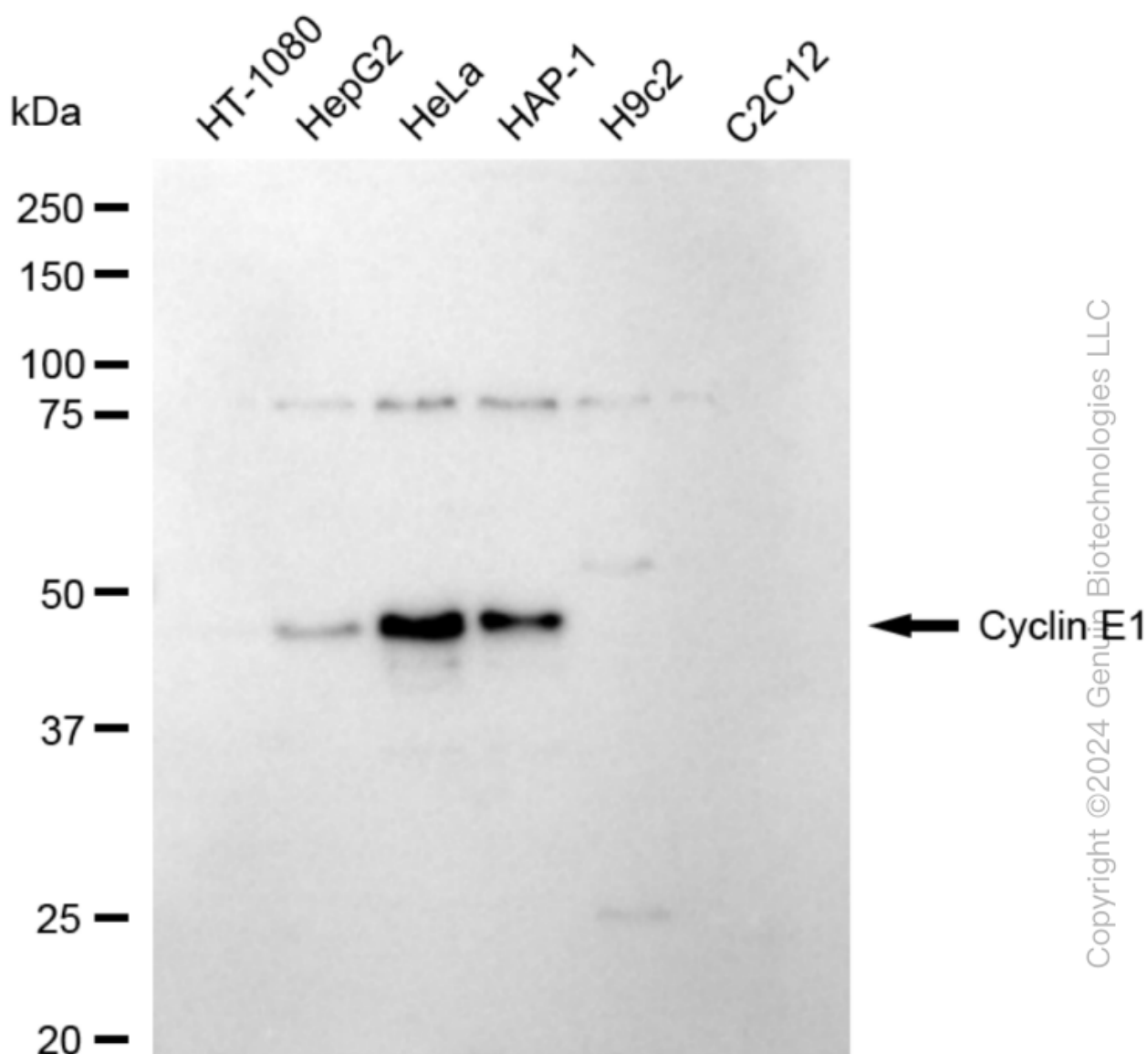
SUPPORT

SUPPORT@GENUINBIOTECH.COM
TEL: +1-540-855-7041

ORDERS

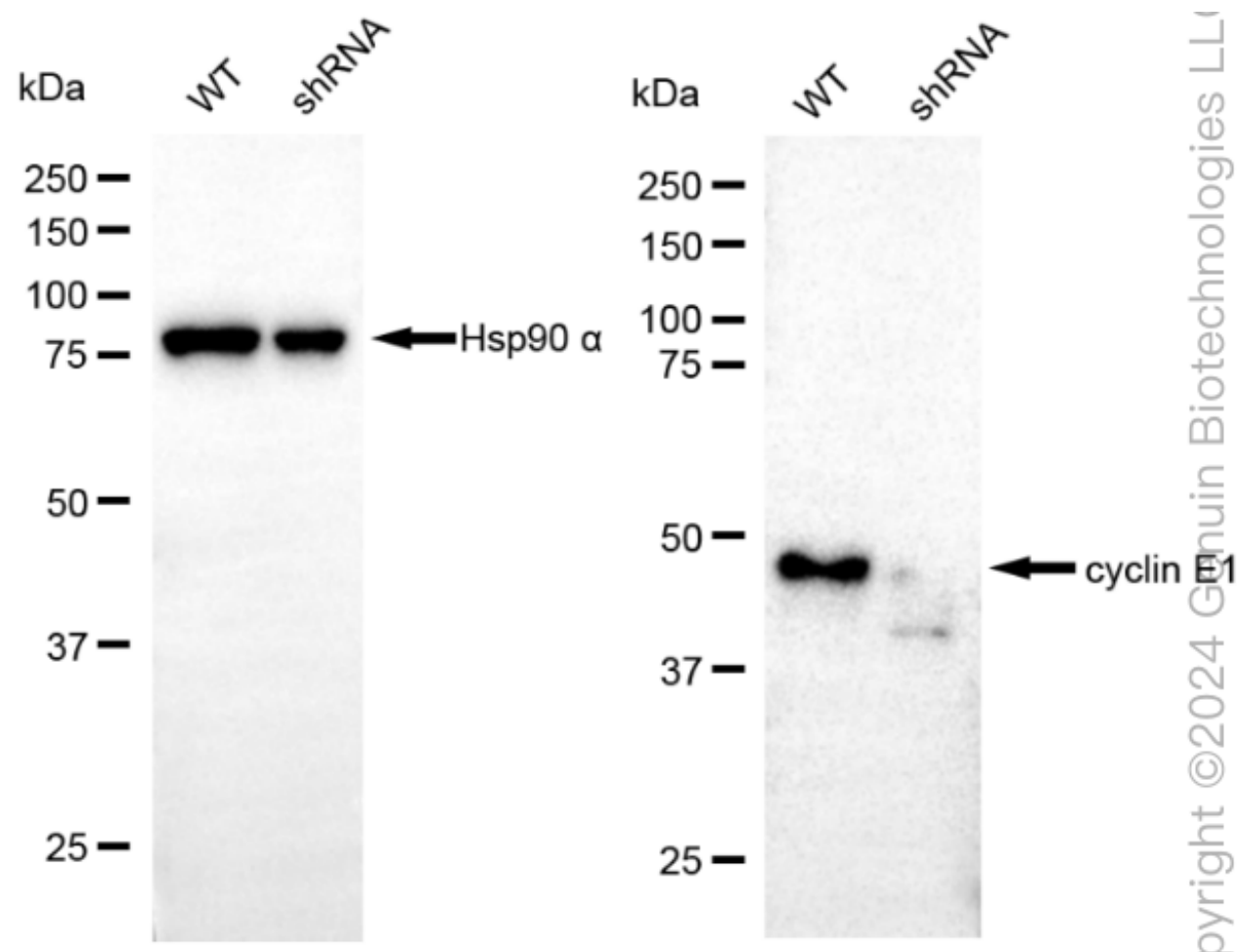
SALES@GENUINBIOTECH.COM
FAX: +1-540-855-7041

WWW.GENUINBIOTECH.COM



Copyright ©2024 Genium Biotechnologies LLC

Western blotting analysis using anti-cyclin E1 antibody (Cat#63258). Total cell lysates (30 µg) from various cell lines were loaded and separated by SDS-PAGE. The blot was incubated with anti-cyclin E1 antibody (Cat#63258, 1:5,000) and HRP-conjugated goat anti-rabbit secondary antibody (Cat#201, 1:20,000) respectively. Image was developed using NaQ™ ECL Substrate Kit (Cat#716).



Western blotting analysis using anti-cyclin E1 antibody (Cat#63258). Cyclin E1 expression in wild-type (WT) and cyclin E1 (CCNE1) shRNA knockdown (KD) HeLa cells with 20 µg of total cell lysates. Hsp90 α serves as a loading control. The blot was incubated with anti-cyclin E1 antibody (Cat#63258, 1:5,000) and HRP-conjugated goat anti-rabbit secondary antibody (Cat#201, 1:20,000) respectively. Image was developed using NaQ™ ECL Substrate Kit (Cat#716).