

# KD-Validated Anti-Cell Division Cycle 123 Rabbit Monoclonal Antibody



**Catalog #: 63261**

## Aliases

CDC123; Cell Division Cycle 123; D123; Cell Division Cycle Protein 123 Homolog; C10orf7; HT-1080; PZ32; Cell Division Cycle 123 Homolog (S. Cerevisiae); Chromosome 10 Open Reading Frame 7; Cell Division Cycle 123 Homolog; Protein D123; C10ORF7

## Background

Gene Name: CDC123  
NCBI Gene Entry: [8872](#)  
UniProt Entry: [O75794](#)

## Application Information

Molecular Weight: Predicted, 39 kDa, observed, 39 kDa  
Clonality: Rabbit monoclonal antibody  
Clone ID: 24GB4760  
Species Reactivity: Human  
Applications Tested: Western blotting (WB), flow cytometry (FCM), immunocytochemistry (IC)

## Immunogen

A synthesized peptide derived from human CDC123

## Isotype

Rabbit IgG

## Storage Buffer

Supplied in PBS (pH 7.4) containing 50% glycerol, and 0.02% sodium azide.

## Storage

Store at -20 °C for one year.

## Recommended Dilutions

Western Blotting (WB): 1:1,000-1:5,000  
Flow Cytometry (FCM): 1:2,000  
Immunocytochemistry (IC): 1:100-1:1,000

**Note:** This product is for research use only.

---

### SUPPORT

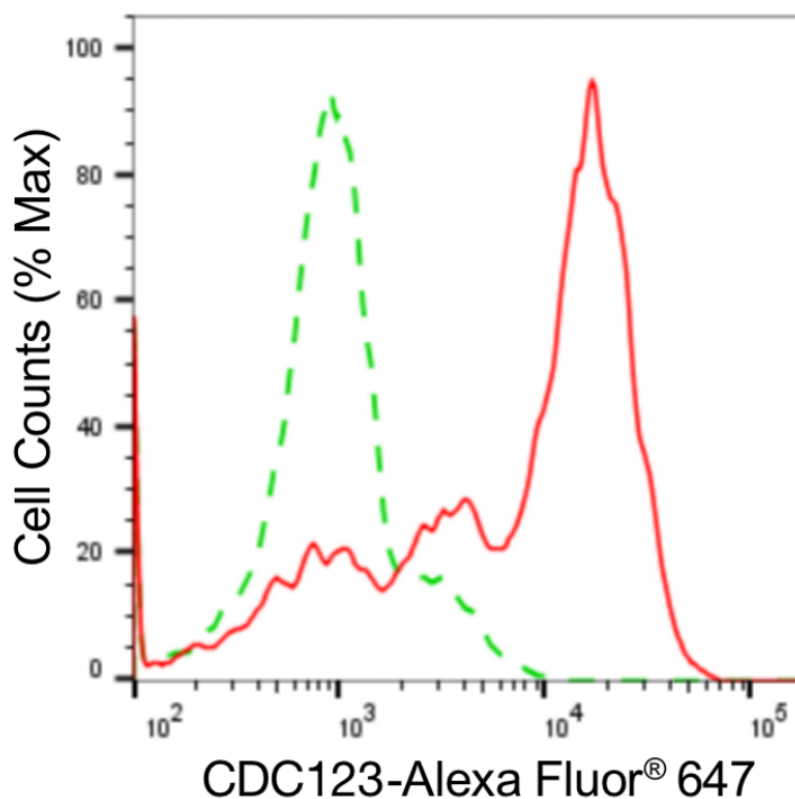
SUPPORT@GENUINBIOTECH.COM  
TEL: +1-540-855-7041

### ORDERS

SALES@GENUINBIOTECH.COM  
FAX: +1-540-855-7041

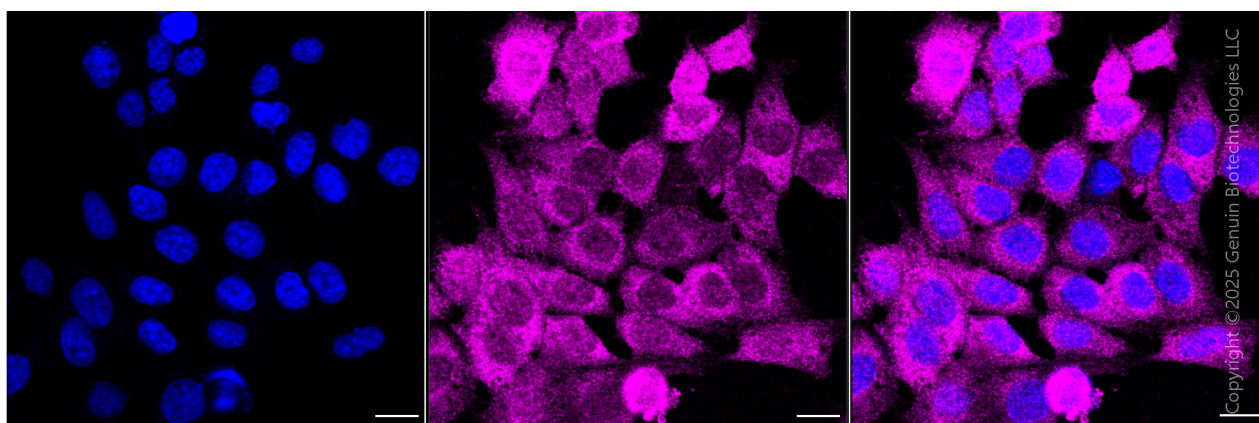
[WWW.GENUINBIOTECH.COM](http://WWW.GENUINBIOTECH.COM)

**Validation Data**



Copyright ©2024 Genuin Biotechnologies LLC

Flow cytometric analysis of CDC123 expression in HAP-1 cells using anti-CDC123 antibody (Cat#63261, 1:2,000). Green, isotype control; red, CDC123.



Immunocytochemical staining of HAP1 cells with anti-CDC123 antibody (Cat#63261, 1:1,000). Nuclei were stained blue with DAPI; CDC123 was stained magenta with Alexa Fluor® 647. Images were taken using Leica stellaris 5. Protein abundance based on laser Intensity and smart gain: Medium. Scale bar, 20 µm.

**SUPPORT**

SUPPORT@GENUINBIOTECH.COM  
TEL: +1-540-855-7041

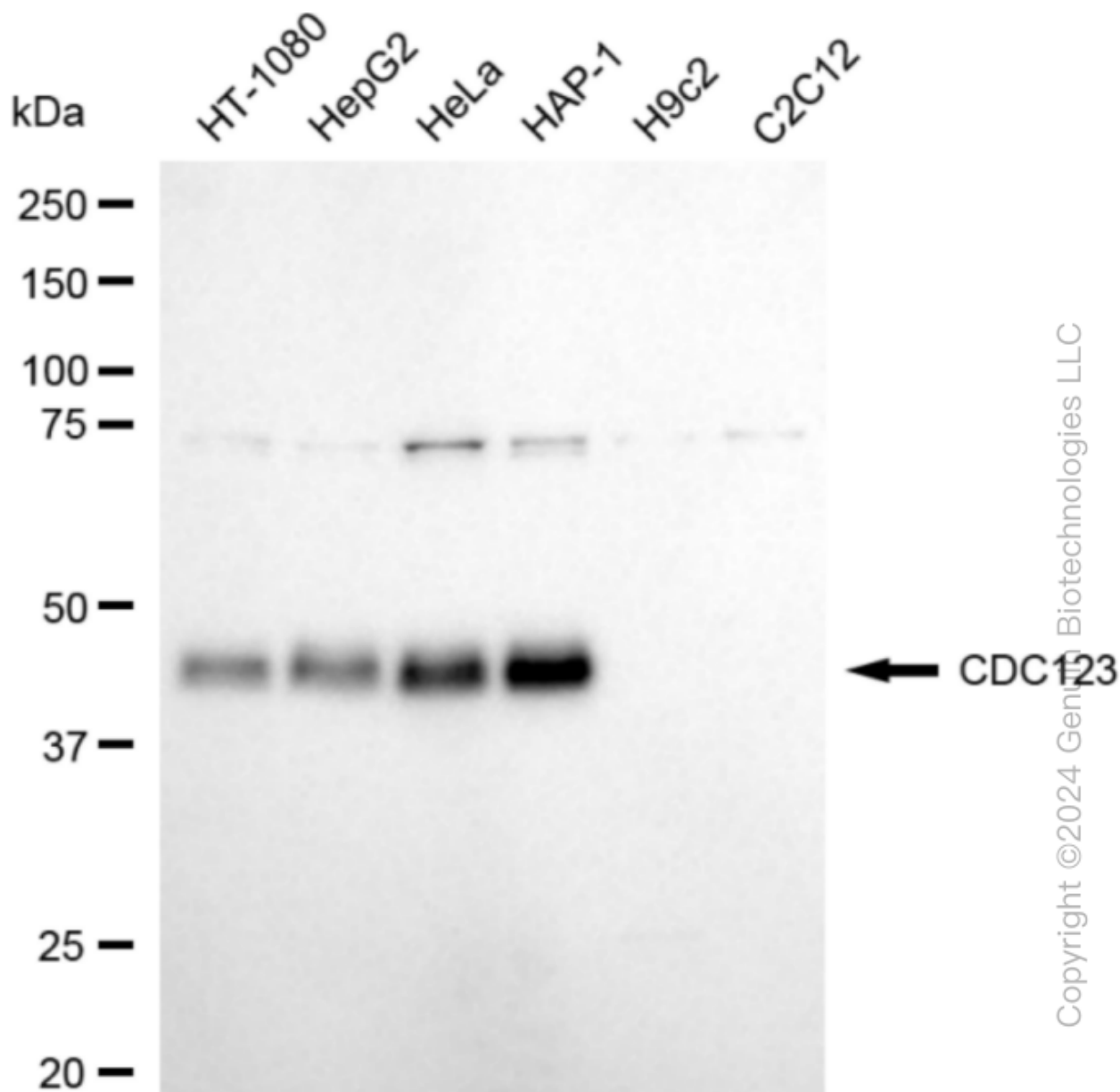
**ORDERS**

SALES@GENUINBIOTECH.COM  
FAX: +1-540-855-7041

**WWW.GENUINBIOTECH.COM**

## KD-Validated Anti-Cell Division Cycle 123 Rabbit Monoclonal Antibody

PAGE 3



Western blotting analysis using anti-CDC123 antibody (Cat#63261). Total cell lysates (30 µg) from various cell lines were loaded and separated by SDS-PAGE. The blot was incubated with anti-CDC123 antibody (Cat#63261, 1:5,000) and HRP-conjugated goat anti-rabbit secondary antibody (Cat#201, 1:20,000) respectively. Image was developed using FeQ™ ECL Substrate Kit (Cat#226).

### SUPPORT

SUPPORT@GENUINBIOTECH.COM  
TEL: +1-540-855-7041

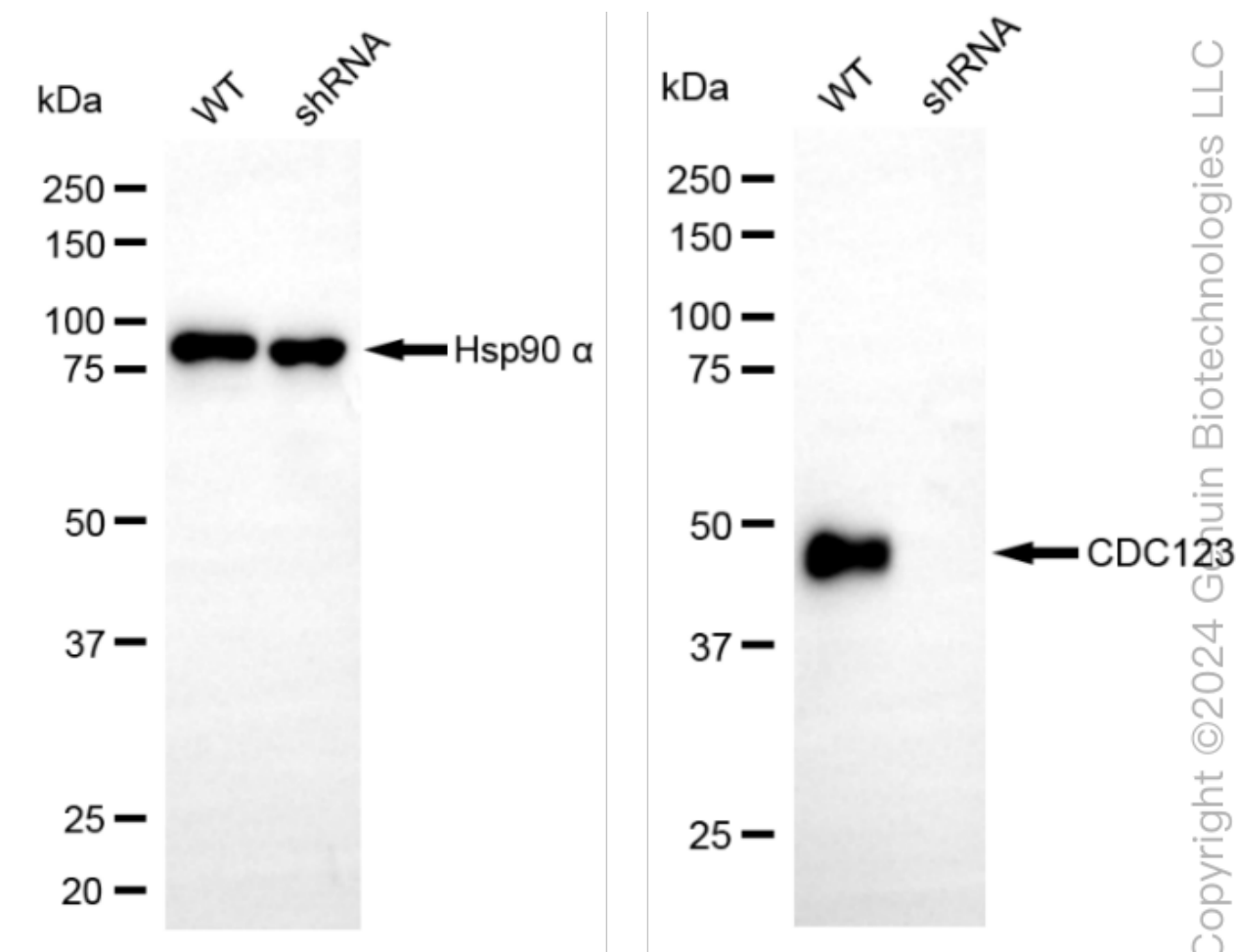
### ORDERS

SALES@GENUINBIOTECH.COM  
FAX: +1-540-855-7041

WWW.GENUINBIOTECH.COM

## KD-Validated Anti-Cell Division Cycle 123 Rabbit Monoclonal Antibody

PAGE 4



Western blotting analysis using anti-CDC123 antibody (Cat#63261). CDC123 expression in wild-type (WT) and CDC123 shRNA knockdown (KD) HeLa cells with 20  $\mu$ g of total cell lysates.  $\beta$ -Tubulin serves as a loading control. The blot was incubated with anti-CDC123 antibody (Cat#63261, 1:5,000) and HRP-conjugated goat anti-rabbit secondary antibody (Cat#201, 1:20,000) respectively. Image was developed using NaQ™ ECL Substrate Kit (Cat#716).

### SUPPORT

SUPPORT@GENUINBIOTECH.COM  
TEL: +1-540-855-7041

### ORDERS

SALES@GENUINBIOTECH.COM  
FAX: +1-540-855-7041

[WWW.GENUINBIOTECH.COM](http://WWW.GENUINBIOTECH.COM)