

# KD-Validated Anti-CRABP2 Rabbit Monoclonal Antibody



**Catalog #: 63267**

## Aliases

CRABP2; Cellular Retinoic Acid Binding Protein 2; CRABP-II; Cellular Retinoic Acid-Binding Protein 2; Cellular Retinoic Acid-Binding Protein II; RBP6

## Background

Gene Name: CRABP2

NCBI Gene Entry: [1382](#)

UniProt Entry: [P29373](#)

## Application Information

Molecular Weight: Predicted, 16 kDa, observed, 16 kDa

Clonality: Rabbit monoclonal antibody

Clone ID: 24GB4790

Species Reactivity: Human, mouse

Applications Tested: Western blotting (WB), flow cytometry (FCM), immunocytochemistry (IC)

## Immunogen

Recombinant protein of human CRABP2

## Isotype

Rabbit IgG

## Storage Buffer

Supplied in PBS (pH 7.4) containing 50% glycerol, and 0.02% sodium azide.

## Storage

Store at -20 °C for one year.

## Recommended Dilutions

Western Blotting (WB): 1:1,000-1:5,000

Flow Cytometry (FCM): 1:2,000

Immunocytochemistry (IC): 1:100-1:1,000

**Note:** This product is for research use only.

## Validation Data

---

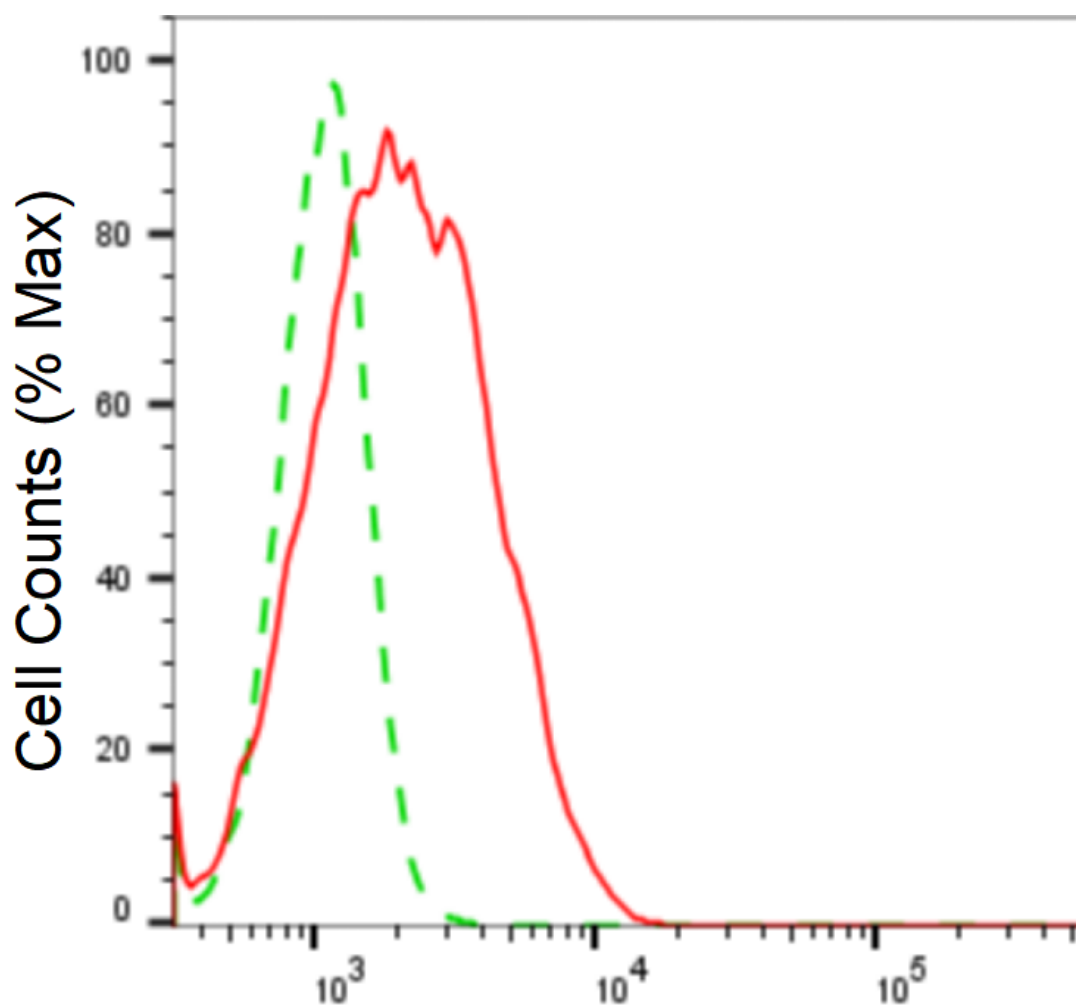
### SUPPORT

SUPPORT@GENUINBIOTECH.COM  
TEL: +1-540-855-7041

### ORDERS

SALES@GENUINBIOTECH.COM  
FAX: +1-540-855-7041

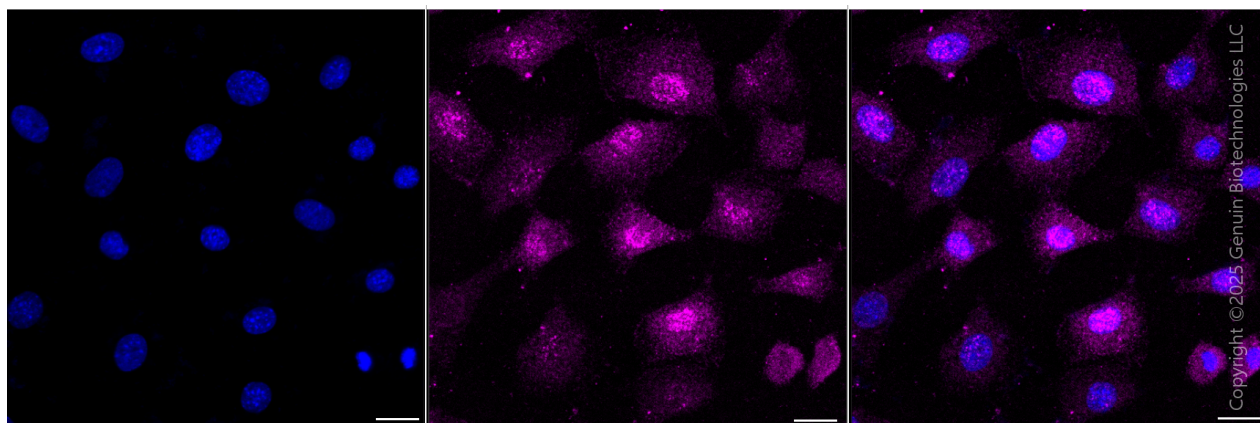
[WWW.GENUINBIOTECH.COM](http://WWW.GENUINBIOTECH.COM)



Copyright ©2025 Genuin Biotechnologies LLC

## CRABP2-Alexa Fluor® 647

Flow cytometric analysis of CRABP2 expression in C2C12 cells using anti-CRABP2 antibody (Cat#63267, 1:2,000). Green, isotype control; red, CRABP2.



Immunocytochemical staining of C2C12 cells with anti-CRABP2 antibody (Cat#63267, 1:1,000) .

### SUPPORT

SUPPORT@GENUINBIOTECH.COM  
TEL: +1-540-855-7041

### ORDERS

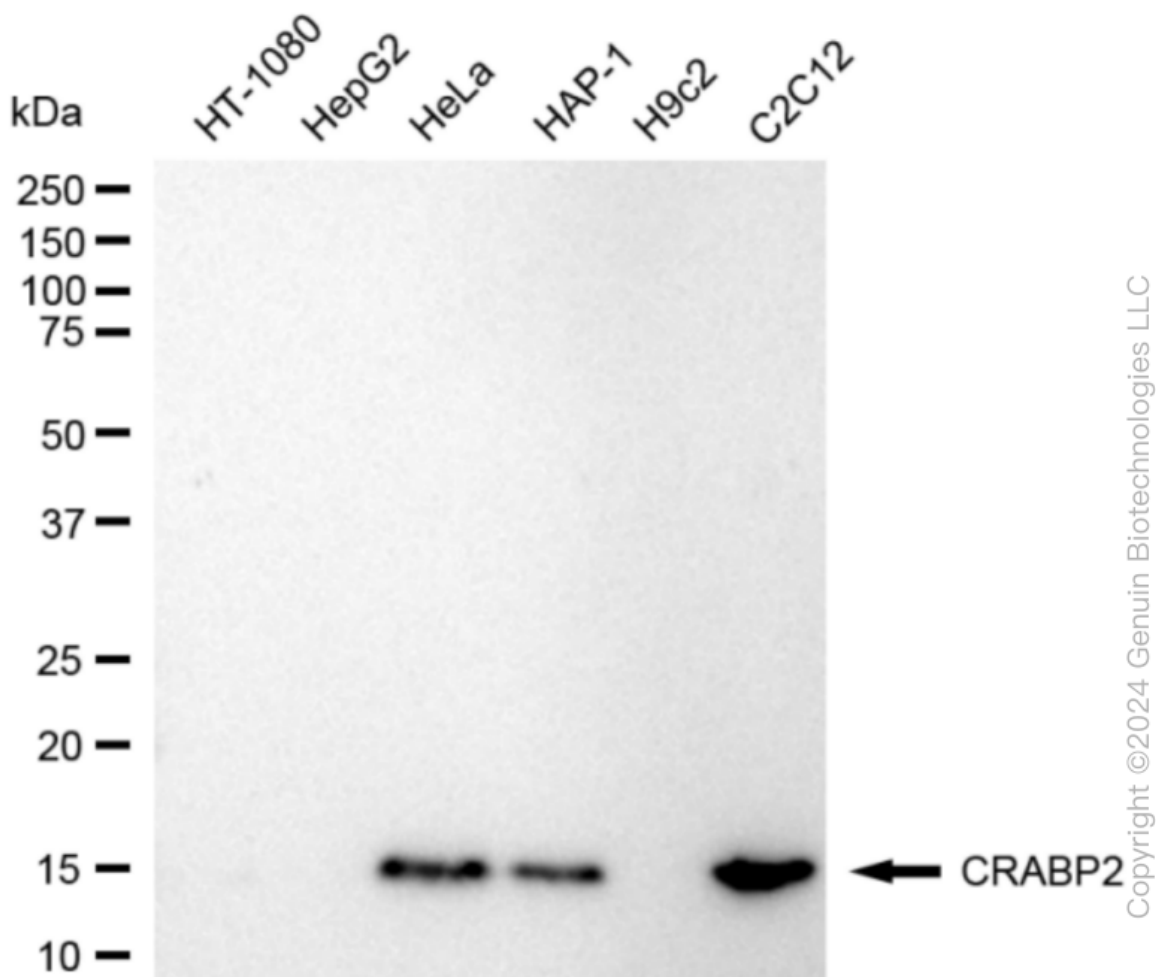
SALES@GENUINBIOTECH.COM  
FAX: +1-540-855-7041

[WWW.GENUINBIOTECH.COM](http://WWW.GENUINBIOTECH.COM)

## KD-Validated Anti-CRABP2 Rabbit Monoclonal Antibody

PAGE 3

Nuclei were stained blue with DAPI; CRABP2 was stained magenta with Alexa Fluor® 647. Images were taken using Leica stellaris 5. Protein abundance based on laser Intensity and Smart Gain: Medium. Scale bar, 20  $\mu$ m.



Western blotting analysis using anti-CRABP2 antibody (Cat#63267). Total cell lysates (30  $\mu$ g) from various cell lines were loaded and separated by SDS-PAGE. The blot was incubated with anti-CRABP2 antibody (Cat#63267, 1:5,000) and HRP-conjugated goat anti-rabbit secondary antibody (Cat#201, 1:20,000) respectively. Image was developed using FeQ™ ECL Substrate Kit (Cat#226). CRABP2, cellular retinoic acid binding protein 2.

### SUPPORT

SUPPORT@GENUINBIOTECH.COM  
TEL: +1-540-855-7041

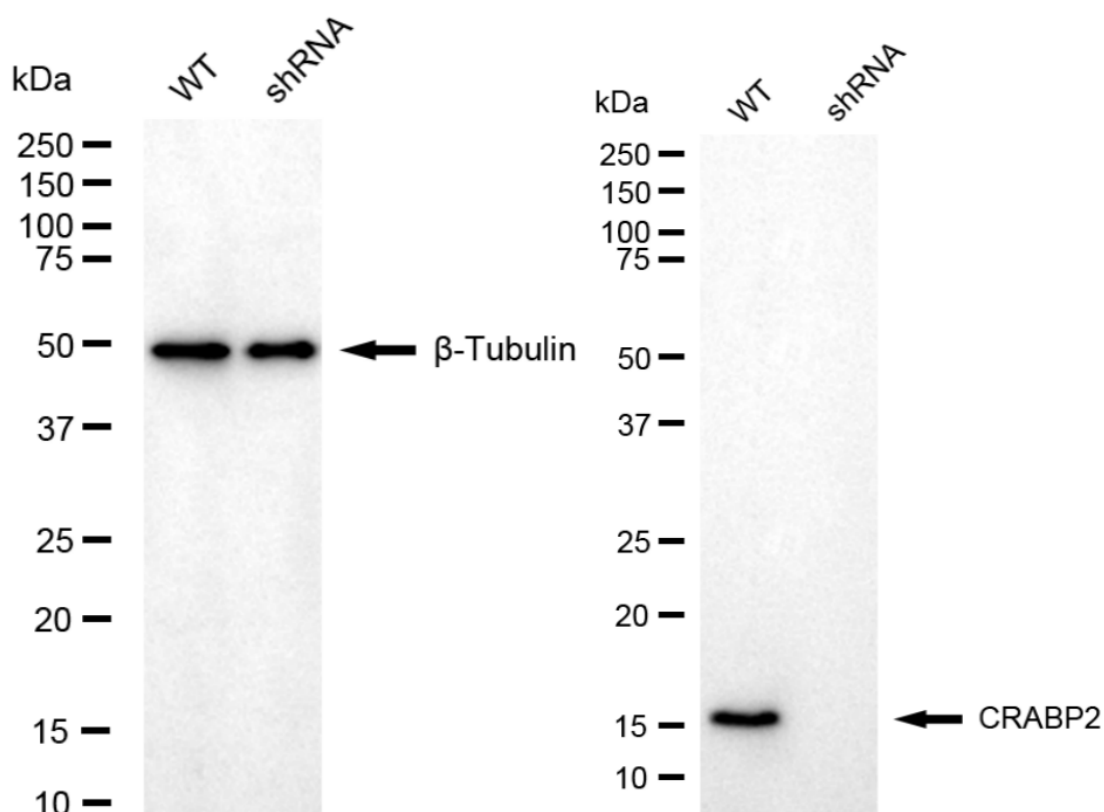
### ORDERS

SALES@GENUINBIOTECH.COM  
FAX: +1-540-855-7041

[WWW.GENUINBIOTECH.COM](http://WWW.GENUINBIOTECH.COM)

## KD-Validated Anti-CRABP2 Rabbit Monoclonal Antibody

PAGE 4



Copyright ©2024 Genuin Biotechnologies LLC

Western blotting analysis using anti-CRABP2 antibody (Cat#63267). CRABP2 expression in wild-type (WT) and CRABP2 shRNA knockdown (KD) HeLa cells with 20 µg of total cell lysates. β-Tubulin serves as a loading control. The blot was incubated with anti-CRABP2 antibody (Cat#63267, 1:5,000) and HRP-conjugated goat anti-rabbit secondary antibody (Cat#201, 1:20,000) respectively. Image was developed using NaQ™ ECL Substrate Kit (Cat#716).

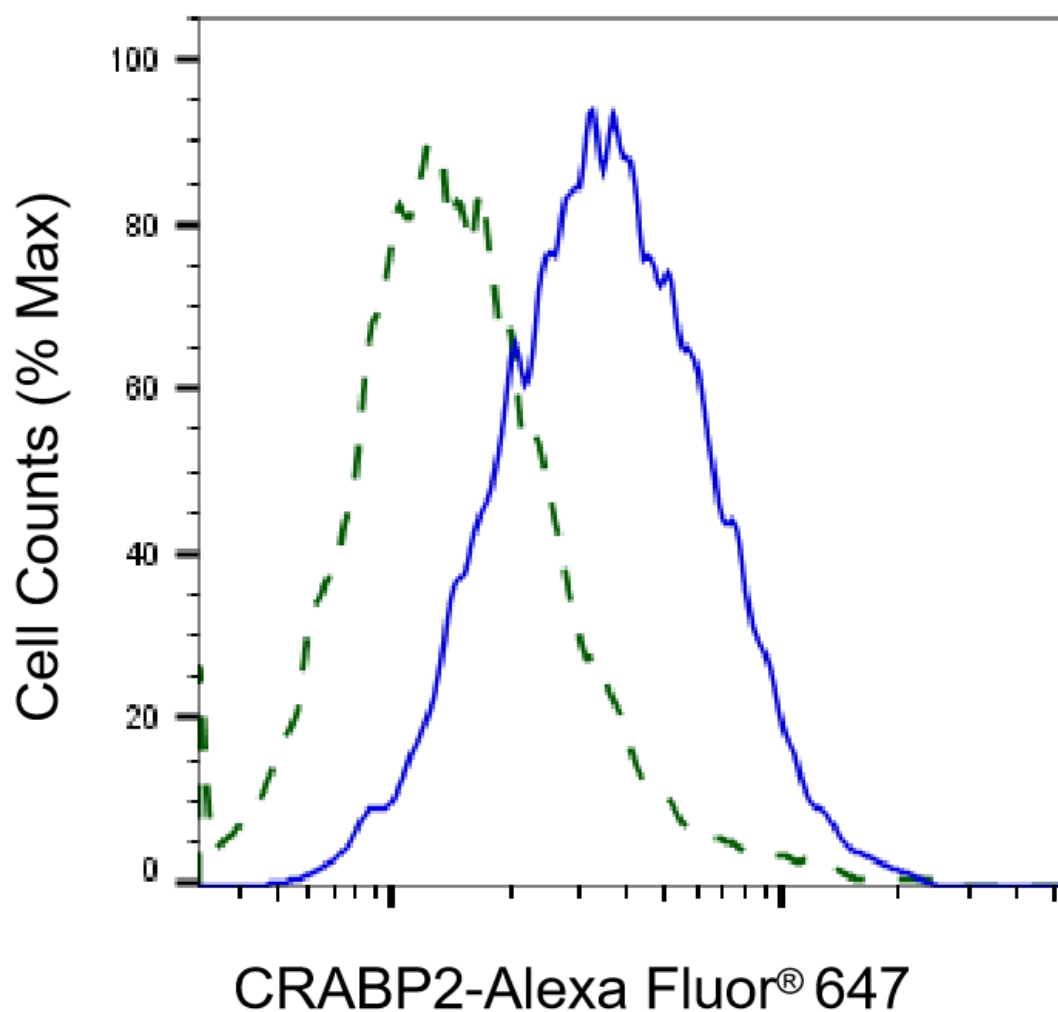
### SUPPORT

SUPPORT@GENUINBIOTECH.COM  
TEL: +1-540-855-7041

### ORDERS

SALES@GENUINBIOTECH.COM  
FAX: +1-540-855-7041

[WWW.GENUINBIOTECH.COM](http://WWW.GENUINBIOTECH.COM)



Copyright ©2025 Genuin Biotechnologies LLC

Validation of CRABP2 knockdown using flow cytometry. Wild-type(WT, Blue) and knockdown(KD, Green) HeLa cells were stained with anti-CRABP2 antibody (Cat#63267, 1:2,000) and analyzed using BD flow cytometer.