

KD-Validated Anti-Doublecortin Like Kinase 1 Rabbit Monoclonal Antibody



Catalog #: 63270

Aliases

DCLK1; Doublecortin Like Kinase 1; DCDC3A; KIAA0369; DCAMKL1; DCLK; Doublecortin Domain-Containing Protein 3A; Doublecortin-Like And CAM Kinase-Like 1; Serine/Threonine-Protein Kinase DCLK1; Doublecortin-Like Kinase 1; EC 2.7.11.1; Doublecortin And CaM Kinase-Like 1; EC 2.7.11; CLICK1; CL1

Background

Gene Name: DCLK1

NCBI Gene Entry: [9201](#)

UniProt Entry: [O15075](#)

Application Information

Molecular Weight: Predicted, 82 kDa, observed, 75 kDa

Clonality: Rabbit monoclonal antibody

Clone ID: 24GB4805

Species Reactivity: Human, mouse

Applications Tested: Western blotting (WB), flow cytometry (FCM), immunocytochemistry (IC)

Immunogen

A synthesized peptide derived from human DCAMKL1

Isotype

Rabbit IgG

Storage Buffer

Supplied in PBS (pH 7.4) containing 50% glycerol, and 0.02% sodium azide.

Storage

Store at -20 °C for one year.

Recommended Dilutions

Western Blotting (WB): 1:1,000-1:5,000

Flow Cytometry (FCM): 1:2,000

Immunocytochemistry (IC): 1:100-1:1,000

SUPPORT

SUPPORT@GENUINBIOTECH.COM
TEL: +1-540-855-7041

ORDERS

SALES@GENUINBIOTECH.COM
FAX: +1-540-855-7041

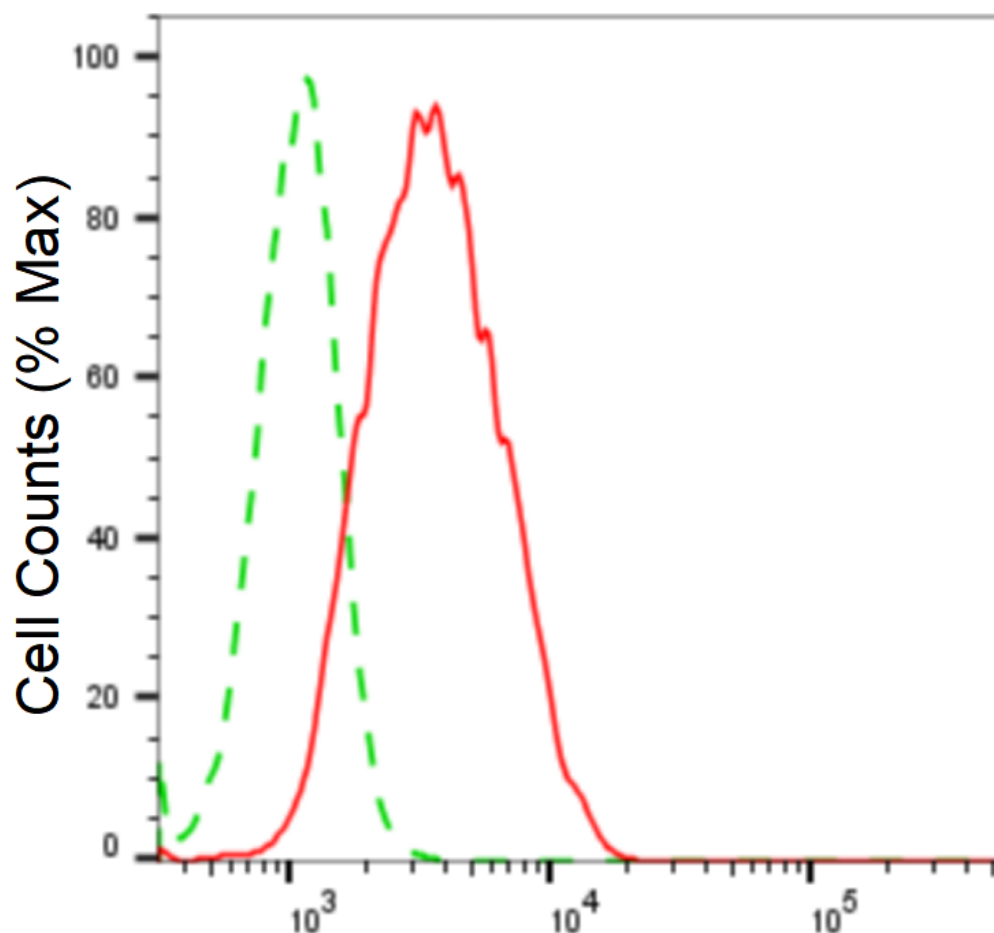
WWW.GENUINBIOTECH.COM

KD-Validated Anti-Doublecortin Like Kinase 1 Rabbit Monoclonal Antibody

PAGE 2

Note: This product is for research use only.

Validation Data



Copyright ©2025 Genuin Biotechnologies LLC

Doublecortin like kinase 1-Alexa Fluor® 647

Flow cytometric analysis of doublecortin like kinase 1 expression in C2C12 cells using anti-doublecortin like kinase 1 antibody (Cat#63270, 1:2,000). Green, isotype control; red, doublecortin like kinase 1.

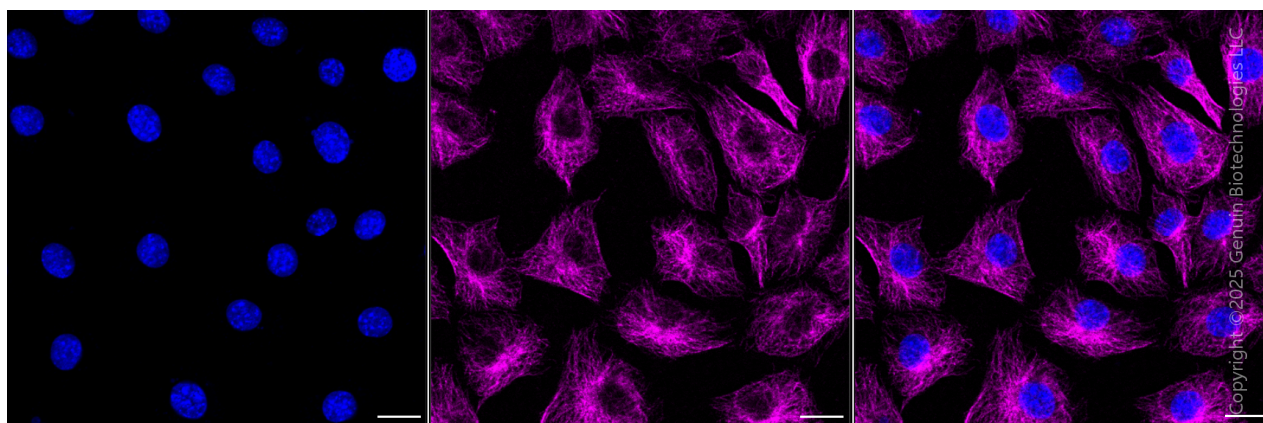
SUPPORT

SUPPORT@GENUINBIOTECH.COM
TEL: +1-540-855-7041

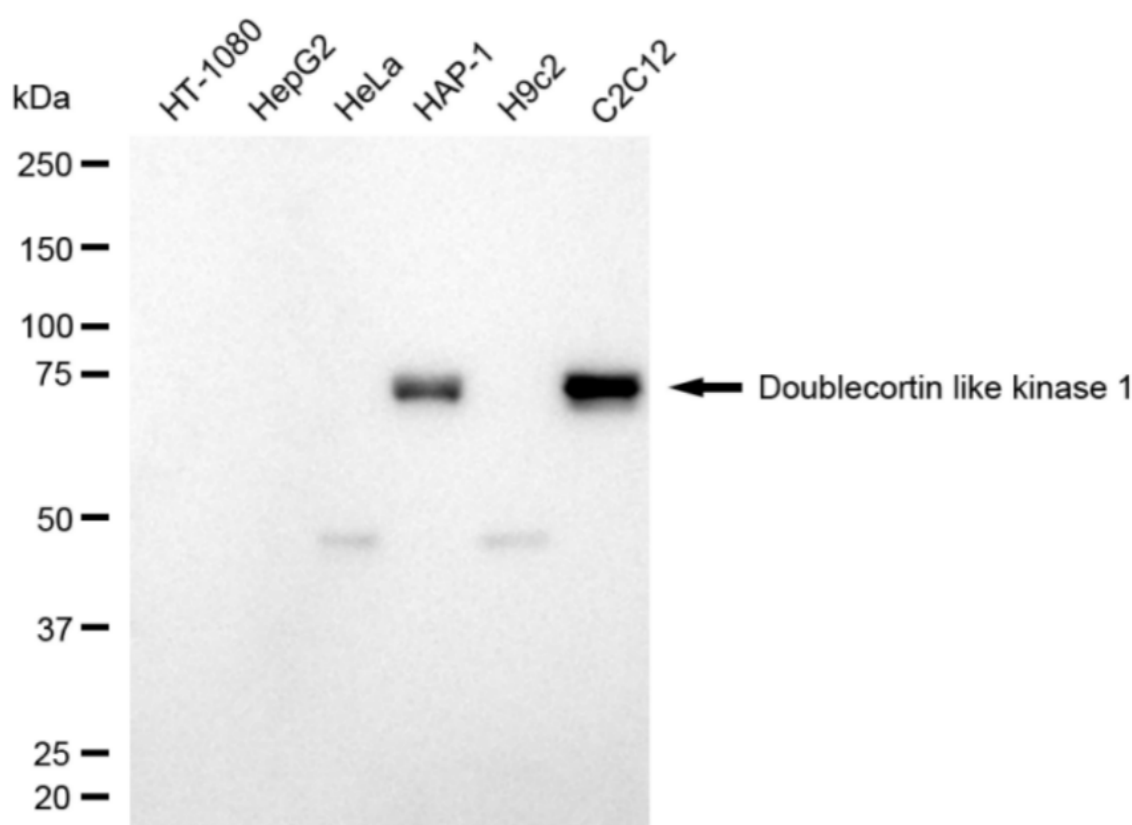
ORDERS

SALES@GENUINBIOTECH.COM
FAX: +1-540-855-7041

WWW.GENUINBIOTECH.COM



Immunocytochemical staining of C2C12 cells with anti-Doublecortin like kinase 1 antibody (Cat#63270, 1:1,000) . Nuclei were stained blue with DAPI; Doublecortin like kinase 1 was stained magenta with Alexa Fluor® 647. Images were taken using Leica stellaris 5. Protein abundance based on laser Intensity and smart gain: Medium. Scale bar, 20 μ m.

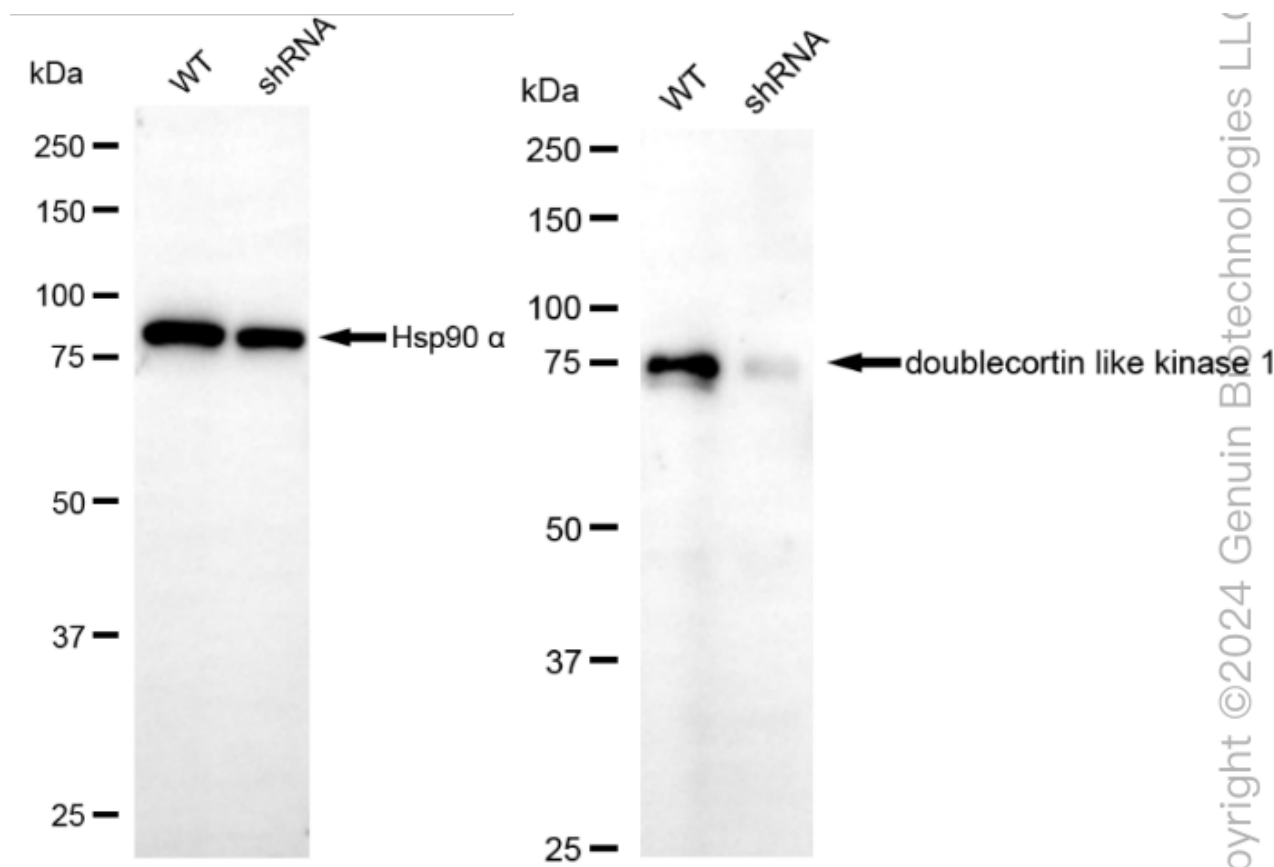


Western blotting analysis using anti-doublecortin like kinase 1 antibody (Cat#63270). Total cell lysates (30 μ g) from various cell lines were loaded and separated by SDS-PAGE. The blot was incubated with anti-doublecortin like kinase 1 antibody (Cat#63270, 1:5,000) and HRP-conjugated goat anti-rabbit secondary antibody (Cat#201, 1:20,000) respectively. Image was developed using

KD-Validated Anti-Doublecortin Like Kinase 1 Rabbit Monoclonal Antibody

PAGE 4

NaQ™ ECL Substrate Kit (Cat#716).



Western blotting analysis using anti-doublecortin like kinase 1 antibody (Cat#63270).

Doublecortin like kinase 1 expression in wild-type (WT) and doublecortin like kinase 1 (DCLK1) shRNA knockdown (KD) HeLa cells with 20 µg of total cell lysates. β-Tubulin serves as a loading control. The blot was incubated with anti-doublecortin like kinase 1 antibody (Cat#63270, 1:5,000) and HRP-conjugated goat anti-rabbit secondary antibody (Cat#201, 1:20,000) respectively. Image was developed using NaQ™ ECL Substrate Kit (Cat#716).

SUPPORT

SUPPORT@GENUINBIOTECH.COM
TEL: +1-540-855-7041

ORDERS

SALES@GENUINBIOTECH.COM
FAX: +1-540-855-7041

WWW.GENUINBIOTECH.COM