

KD-Validated Anti-DFFA Rabbit Monoclonal Antibody



Catalog #: 63271

Aliases

DFFA; DNA Fragmentation Factor Subunit Alpha; DFF-45; DFF45; ICAD; DFF1; DNA Fragmentation Factor, 45kDa, Alpha Polypeptide; DNA Fragmentation Factor 45KDa Subunit; Inhibitor Of CAD; DNA Fragmentation Factor, 45 KD, Alpha Polypeptide; DNA Fragmentation Factor, 45 KD, Alpha Subunit

Background

Gene Name: DFFA

NCBI Gene Entry: [1676](#)

UniProt Entry: [O00273](#)

Application Information

Molecular Weight: Predicted, 37 kDa, observed, 40 kDa

Clonality: Rabbit monoclonal antibody

Clone ID: 24GB4810

Species Reactivity: Human

Applications Tested: Western blotting (WB), flow cytometry (FCM), immunocytochemistry (IC)

Immunogen

A synthesized peptide derived from human ICAD

Isotype

Rabbit IgG

Storage Buffer

Supplied in PBS (pH 7.4) containing 50% glycerol, and 0.02% sodium azide.

Storage

Store at -20 °C for one year.

Recommended Dilutions

Western Blotting (WB): 1:1,000-1:5,000

Immunocytochemistry (IC): 1:100-1:1,000

Flow Cytometry (FCM): 1:2,000

SUPPORT

SUPPORT@GENUINBIOTECH.COM
TEL: +1-540-855-7041

ORDERS

SALES@GENUINBIOTECH.COM
FAX: +1-540-855-7041

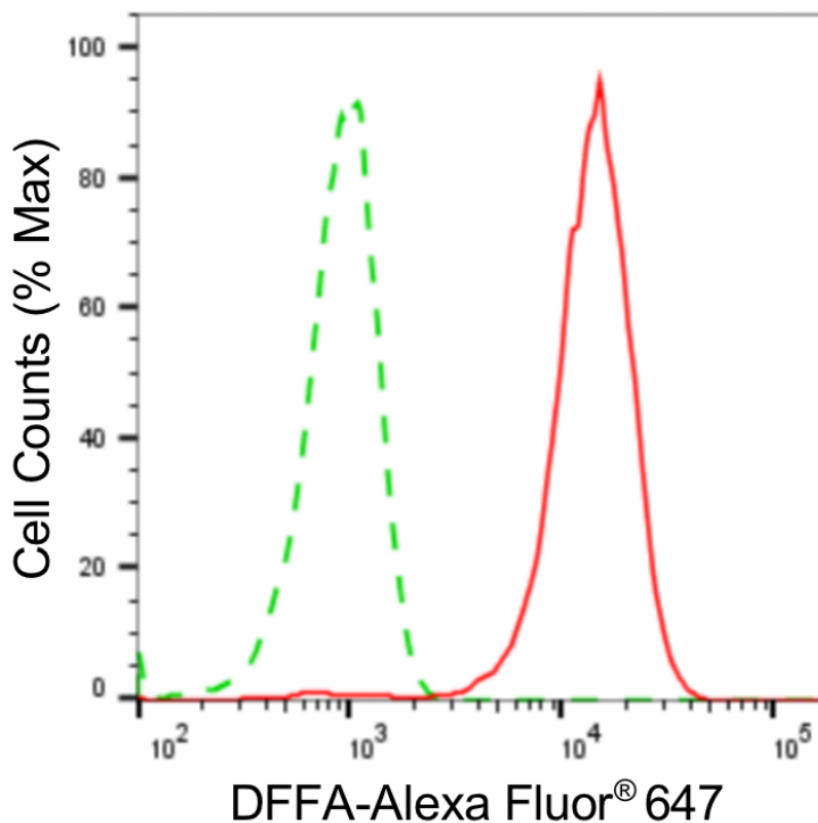
WWW.GENUINBIOTECH.COM

KD-Validated Anti-DFFA Rabbit Monoclonal Antibody

PAGE 2

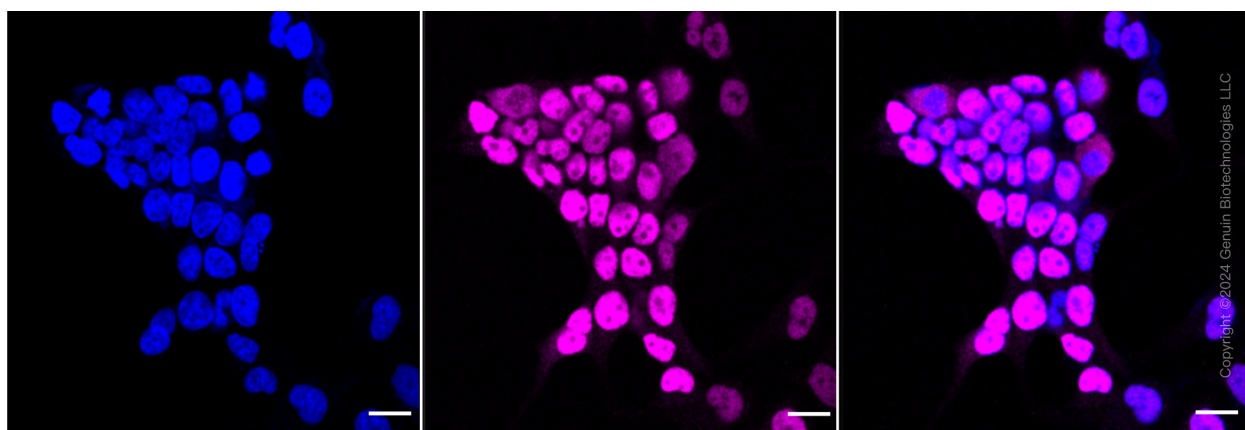
Note: This product is for research use only.

Validation Data



Copyright ©2024 Genuin Biotechnologies LLC

Flow cytometric analysis of DFFA expression in HeLa cells using anti-DFFA antibody (Cat#63271, 1:2,000). Green, isotype control; red, DFFA.



Copyright ©2024 Genuin Biotechnologies LLC

Immunocytochemical staining of HeLa cells with DFFA antibody (Cat#63271, 1:1,000). Nuclei were stained blue with DAPI; DFFA was stained magenta with Alexa Fluor® 647. Images were taken using Leica stellaris 5. Protein abundance based on laser Intensity and smart gain: High. Scale bar: 20 µm.

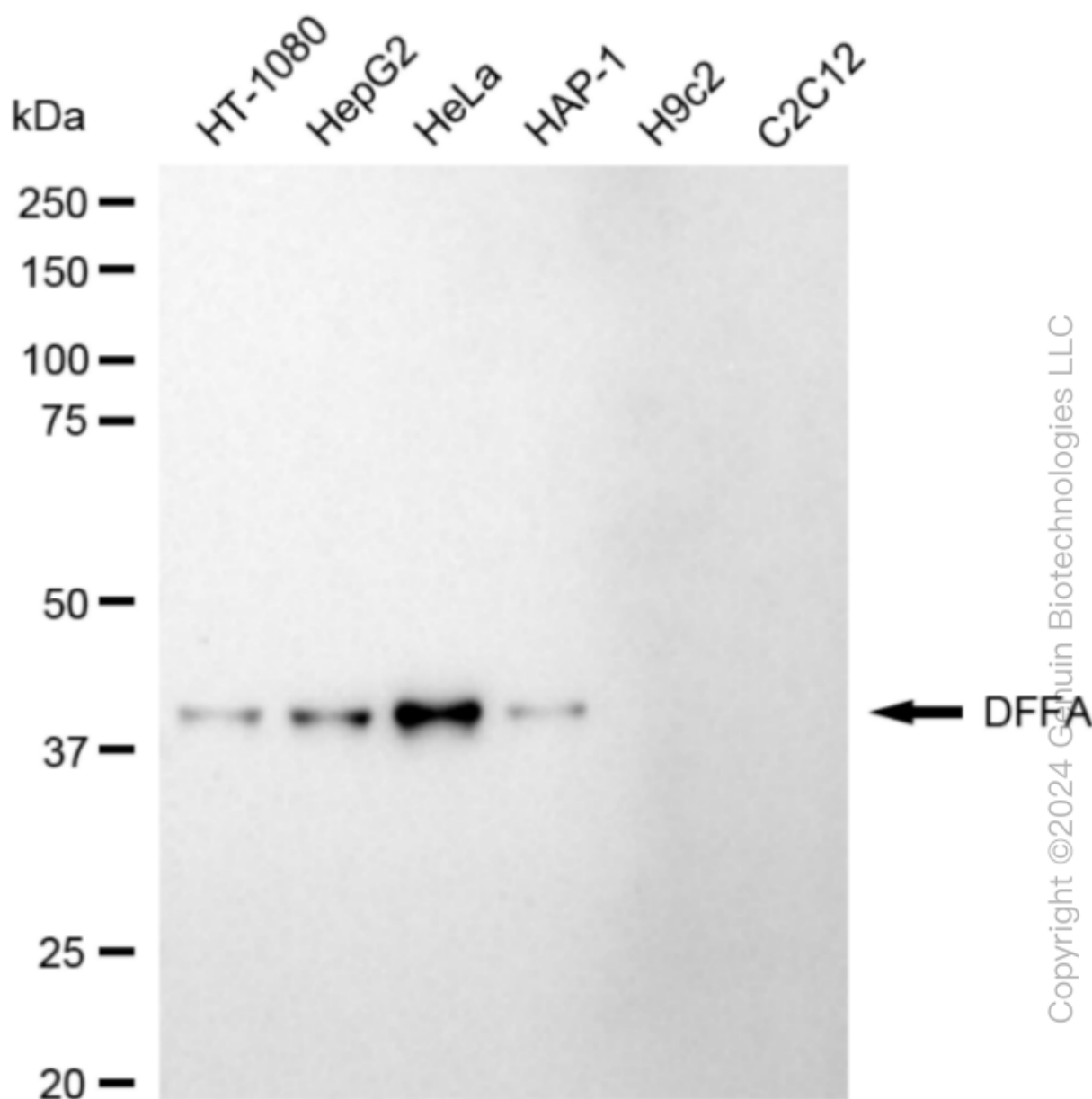
SUPPORT

SUPPORT@GENUINBIOTECH.COM
TEL: +1-540-855-7041

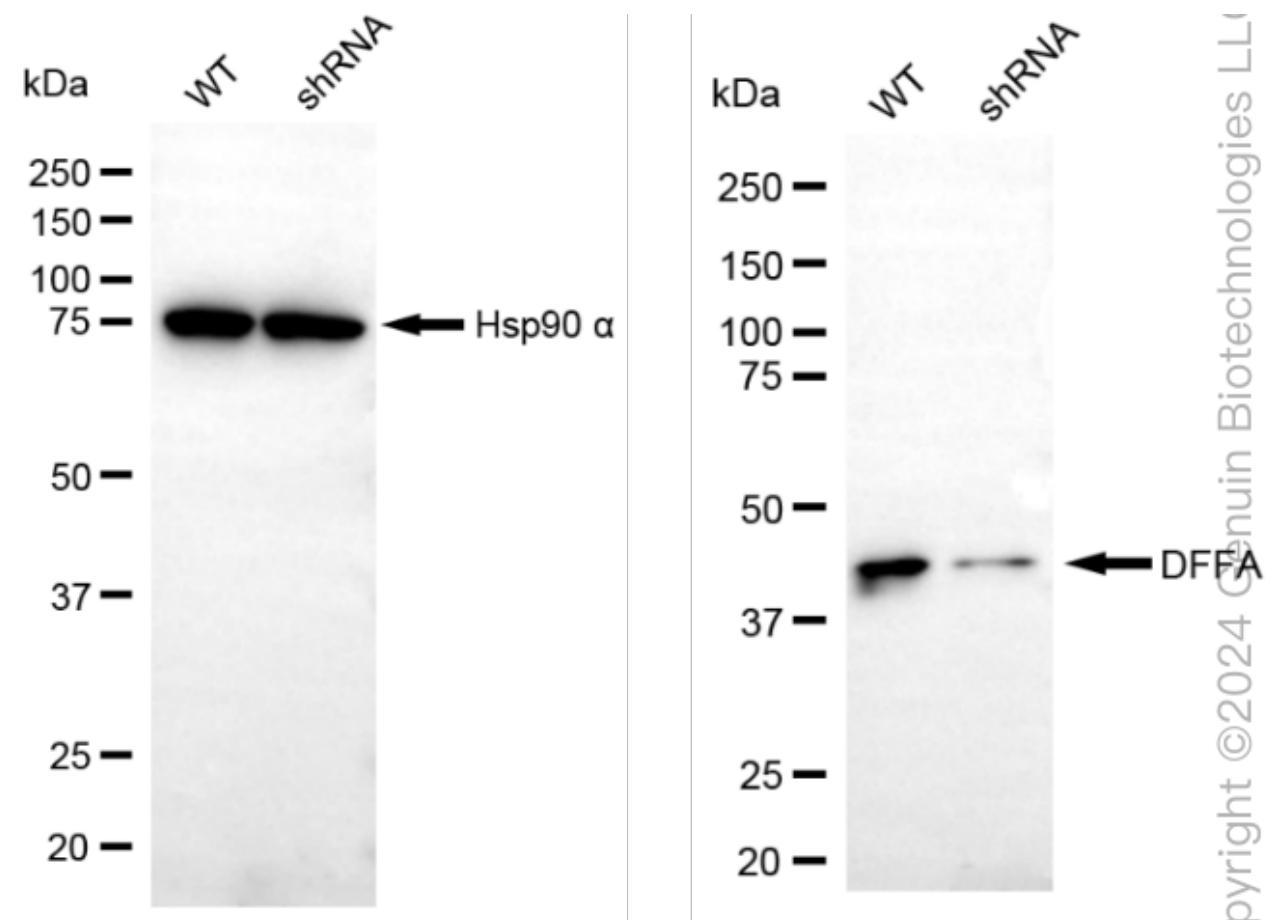
ORDERS

SALES@GENUINBIOTECH.COM
FAX: +1-540-855-7041

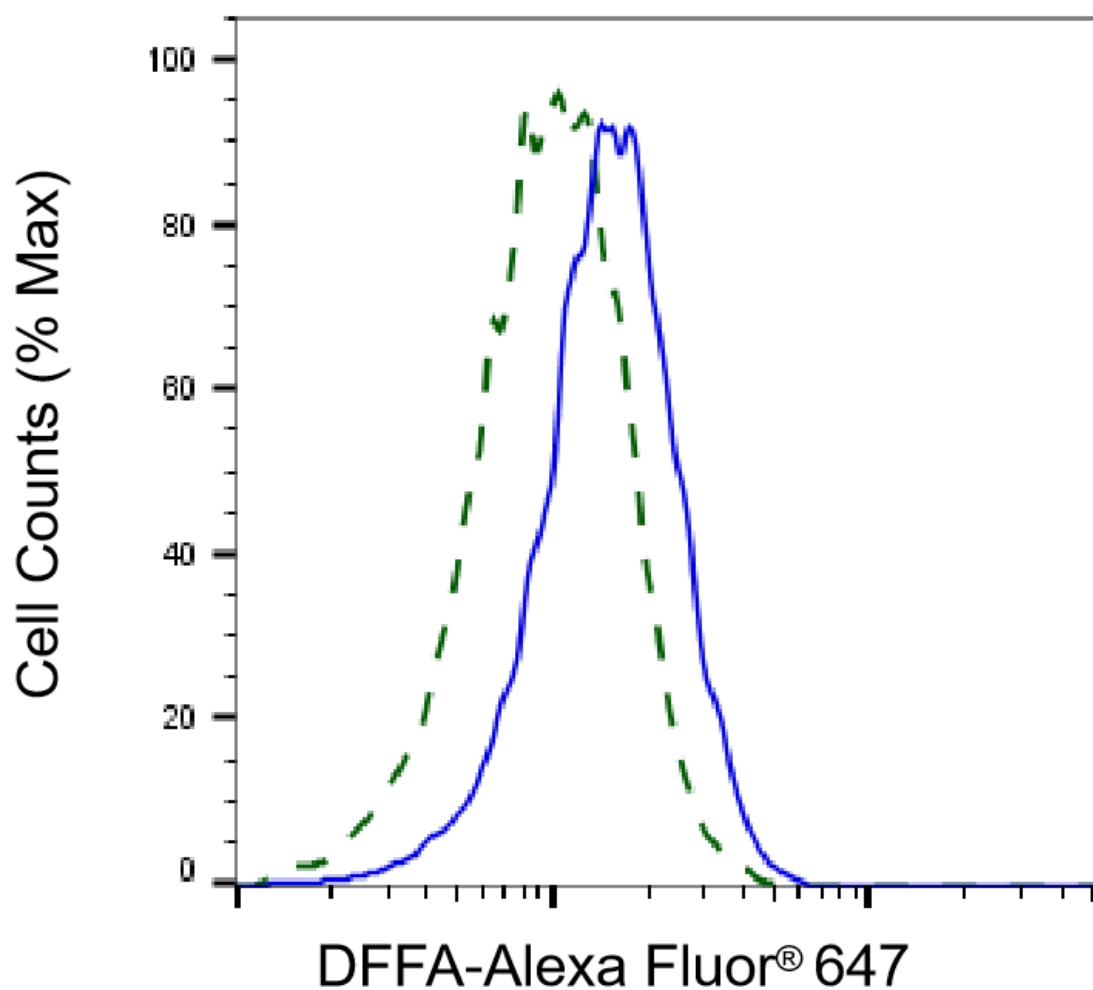
WWW.GENUINBIOTECH.COM



Western blotting analysis using anti-DFFA antibody (Cat#63271). Total cell lysates (30 μ g) from various cell lines were loaded and separated by SDS-PAGE. The blot was incubated with anti-DFFA antibody (Cat#63271, 1:5,000) and HRP-conjugated goat anti-rabbit secondary antibody (Cat#201, 1:20,000) respectively. Image was developed using FeQ™ ECL Substrate Kit (Cat#226). DFFA, DNA fragmentation factor subunit alpha.



Western blotting analysis using anti-DFFA antibody (Cat#63271). DFFA expression in wild-type (WT) and DFFA shRNA knockdown (KD) HeLa cells with 20 µg of total cell lysates. Hsp90 α serves as a loading control. The blot was incubated with anti-DFFA antibody (Cat#63271, 1:5,000) and HRP-conjugated goat anti-rabbit secondary antibody (Cat#201, 1:20,000) respectively. Image was developed using NaQ™ ECL Substrate Kit (Cat#716).



Copyright ©2025 Genuin Biotechnologies LLC

Validation of DFFA knockdown using flow cytometry. Wild-type(WT, Blue) and knockdown(KD, Green) HeLa cells were stained with anti-DFFA antibody (Cat#63271, 1:2,000) and analyzed using BD flow cytometer.