

KD-Validated Anti-GCLC Rabbit Monoclonal Antibody



Catalog #: 63281

Aliases

GCLC; Glutamate-Cysteine Ligase Catalytic Subunit; GLCLC; GLCL; GCS; Glutamate--Cysteine Ligase Catalytic Subunit; Gamma-Glutamylcysteine Synthetase; GCS Heavy Chain; EC 6.3.2.2; Gamma-ECS; Glutamate-Cysteine Ligase, Catalytic Subunit; GCL

Background

Gene Name: GCLC

NCBI Gene Entry: [2729](#)

UniProt Entry: [P48506](#)

Application Information

Molecular Weight: Predicted, 61 kDa, observed, 73 kDa

Clonality: Rabbit monoclonal antibody

Clone ID: 24GB4860

Species Reactivity: Human, mouse, rat

Applications Tested: Western blotting (WB), flow cytometry (FCM), immunocytochemistry (IC)

Immunogen

Recombinant protein of human GCLC

Isotype

Rabbit IgG

Storage Buffer

Supplied in PBS (pH 7.4) containing 50% glycerol, and 0.02% sodium azide.

Storage

Store at -20 °C for one year.

Recommended Dilutions

Western Blotting (WB): 1:1,000-1:5,000

Flow Cytometry (FCM): 1:2,000

Immunocytochemistry (IC): 1:100-1:1,000

Note: This product is for research use only.

SUPPORT

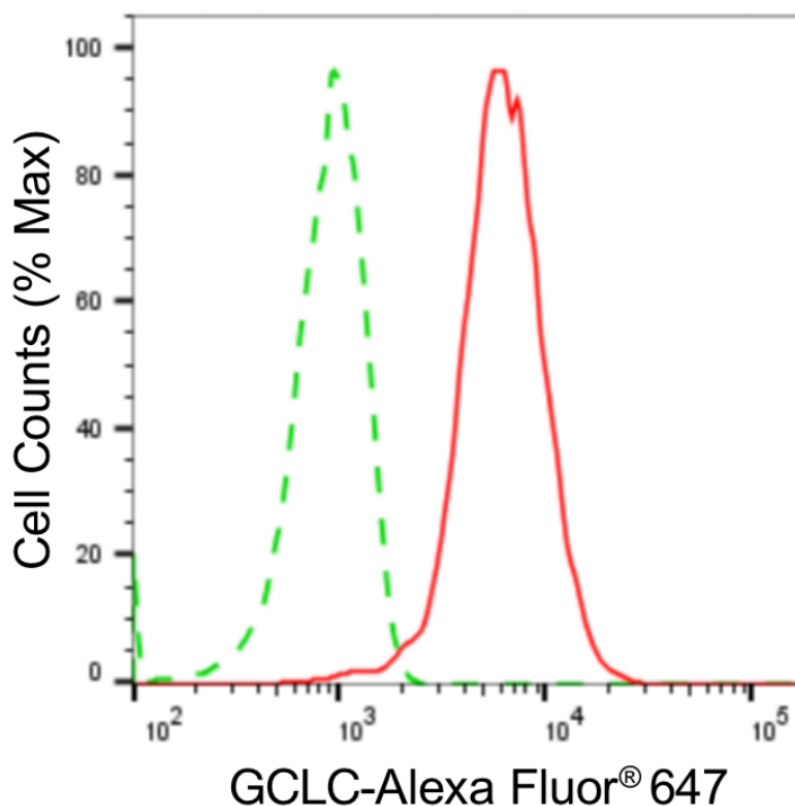
SUPPORT@GENUINBIOTECH.COM
TEL: +1-540-855-7041

ORDERS

SALES@GENUINBIOTECH.COM
FAX: +1-540-855-7041

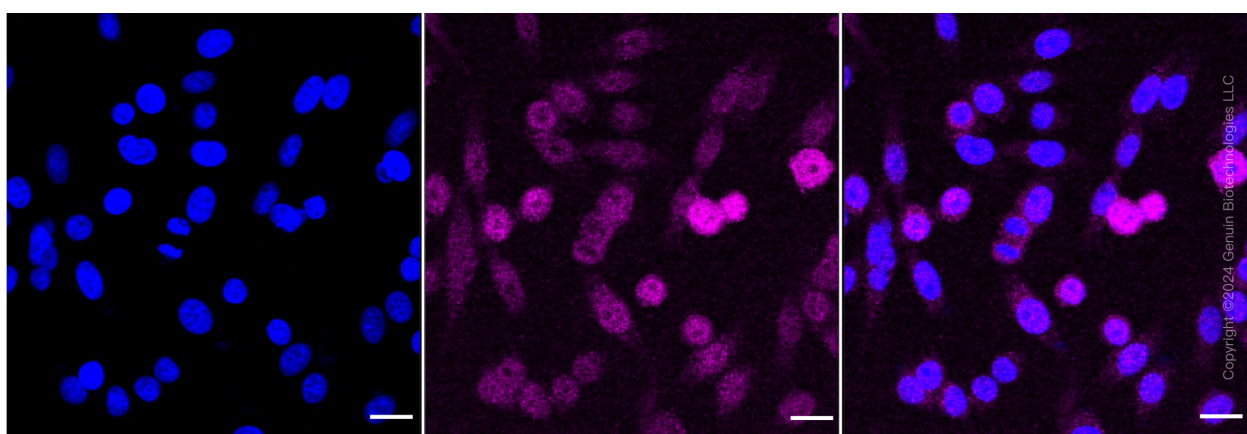
WWW.GENUINBIOTECH.COM

Validation Data



Copyright ©2024 Genuin Biotechnologies LLC

Flow cytometric analysis of GCLC expression in HepG2 cells using anti-GCLC antibody ((Cat#63281, 1:2,000). Green, isotype control; red, GCLC.



Copyright ©2024 Genuin Biotechnologies LLC

Immunocytochemical staining of HepG2 cells with anti-GCLC antibody (Cat#63281, 1:1,000). Nuclei were stained blue with DAPI; GCLC was stained magenta with Alexa Fluor® 647. Images were taken using Leica stellaris 5. Protein abundance based on laser Intensity and smart gain: Medium. Scale bar: 20 μ m.

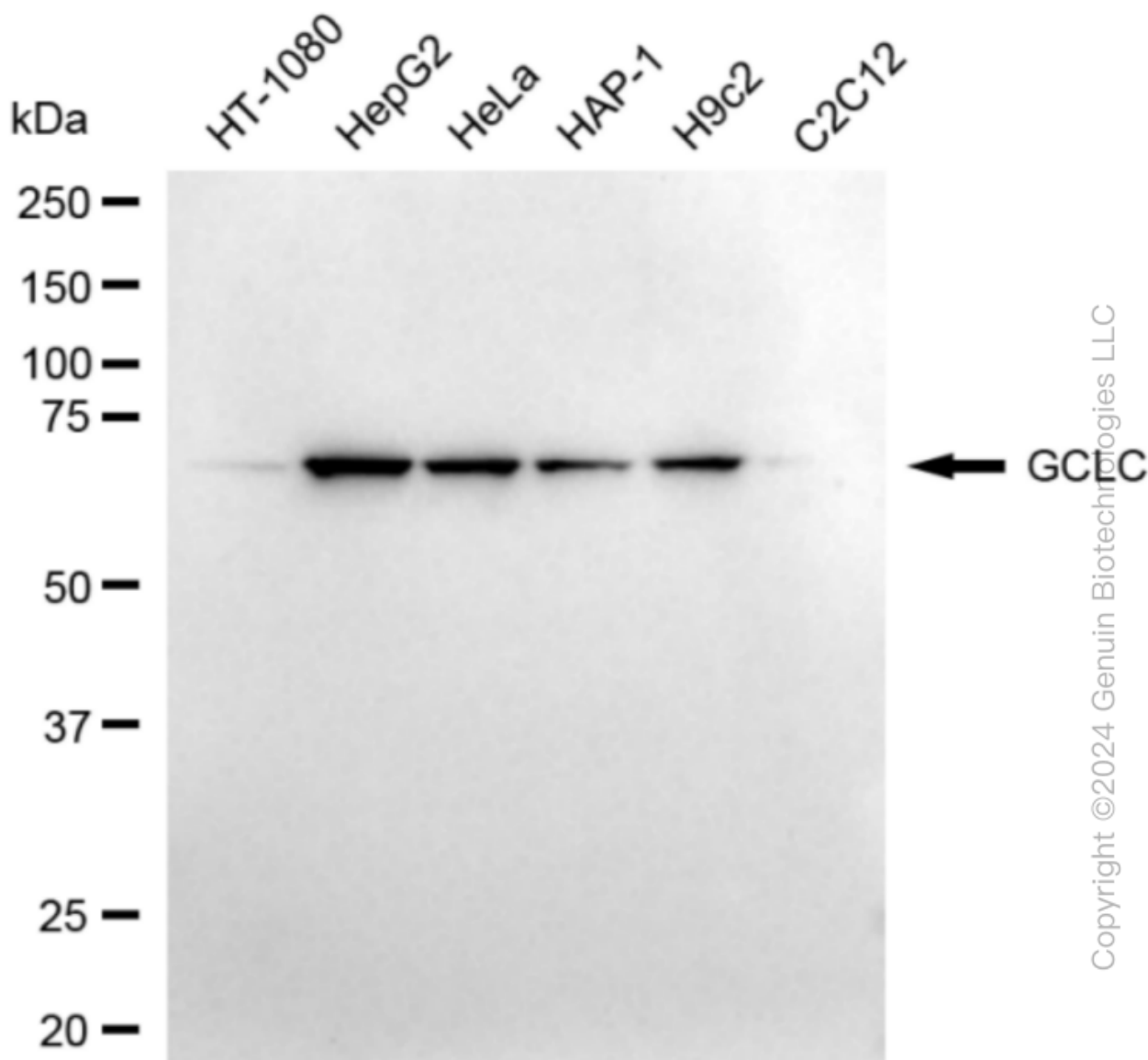
SUPPORT

SUPPORT@GENUINBIOTECH.COM
TEL: +1-540-855-7041

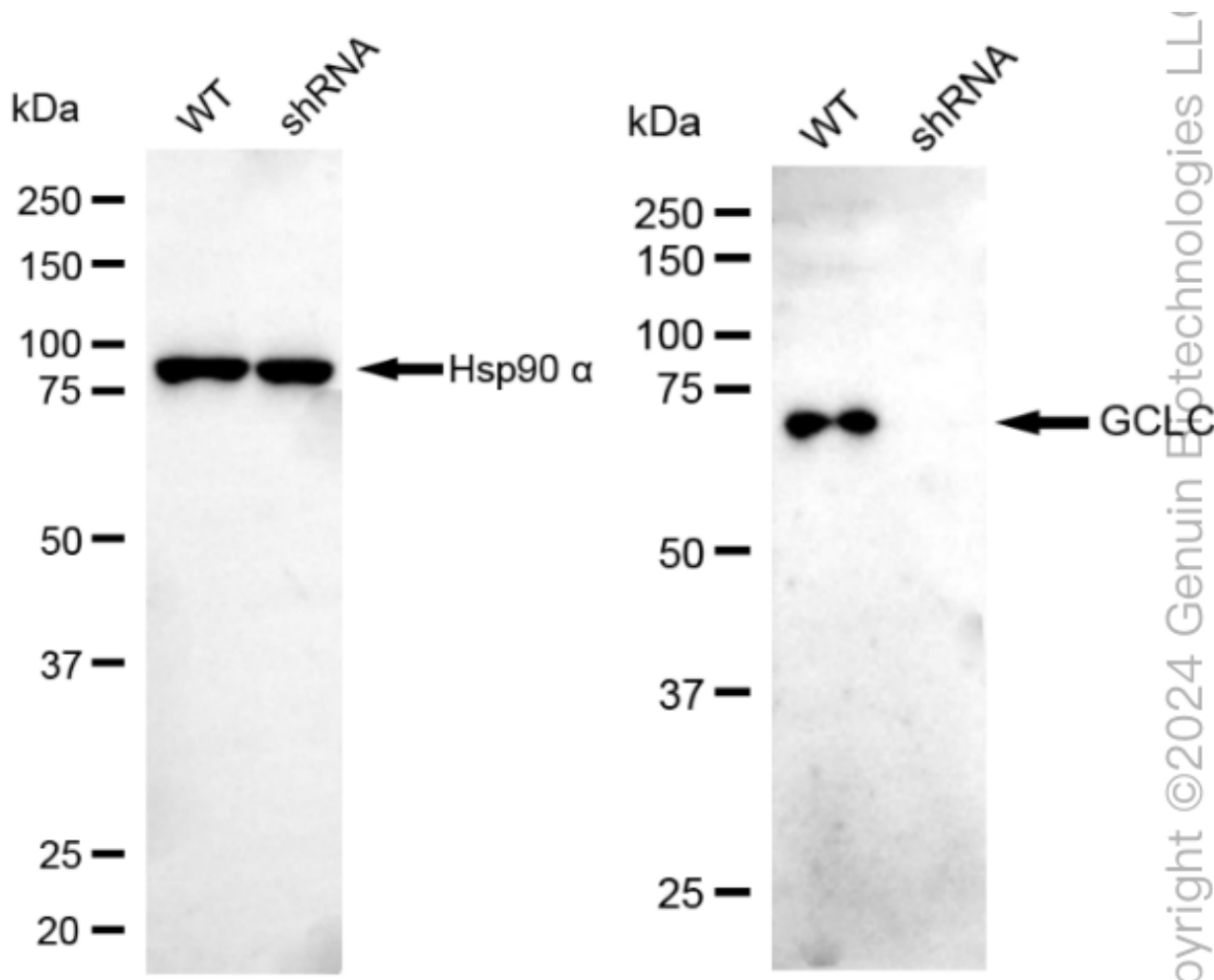
ORDERS

SALES@GENUINBIOTECH.COM
FAX: +1-540-855-7041

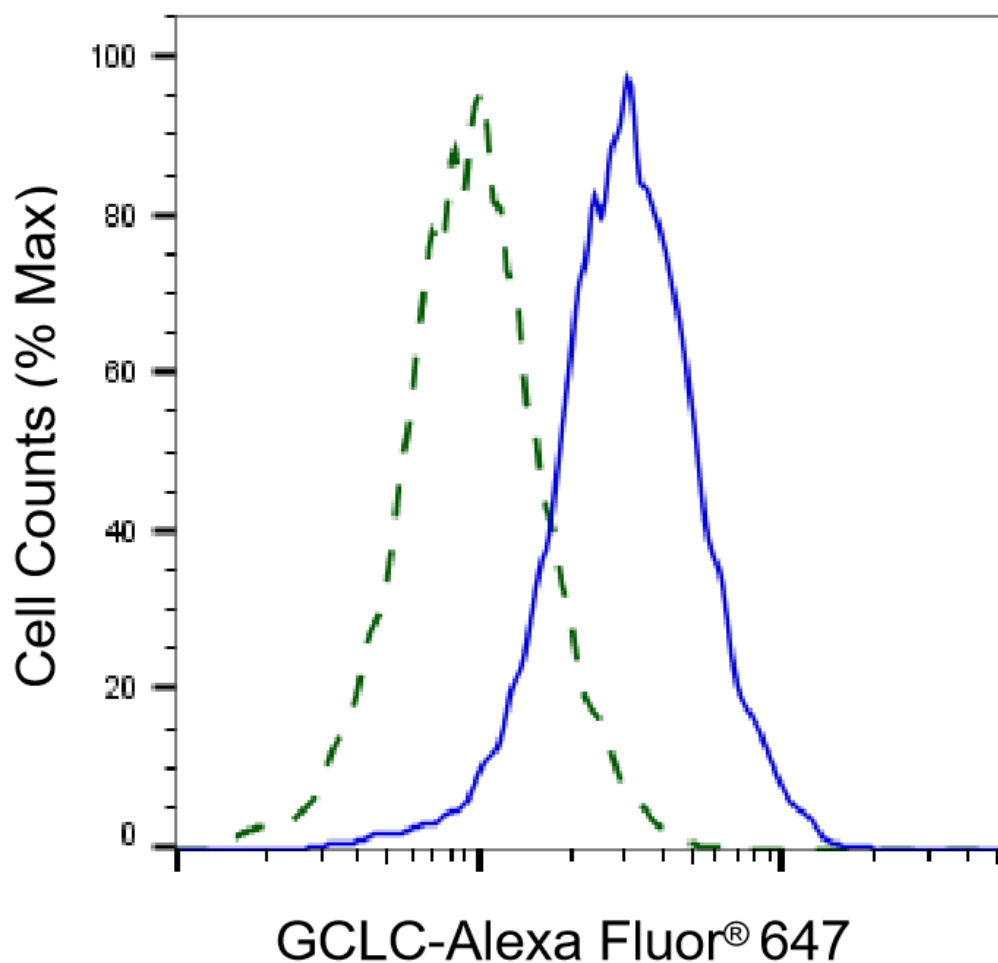
WWW.GENUINBIOTECH.COM



Western blotting analysis using anti-GCLC antibody (Cat#63281). Total cell lysates (30 μ g) from various cell lines were loaded and separated by SDS-PAGE. The blot was incubated with anti-GCLC antibody (Cat#63281, 1:5,000) and HRP-conjugated goat anti-rabbit secondary antibody (Cat#201, 1:20,000) respectively. Image was developed using NaQ™ ECL Substrate Kit (Cat#716) GCLC, glutamate-cysteine ligase catalytic subunit.

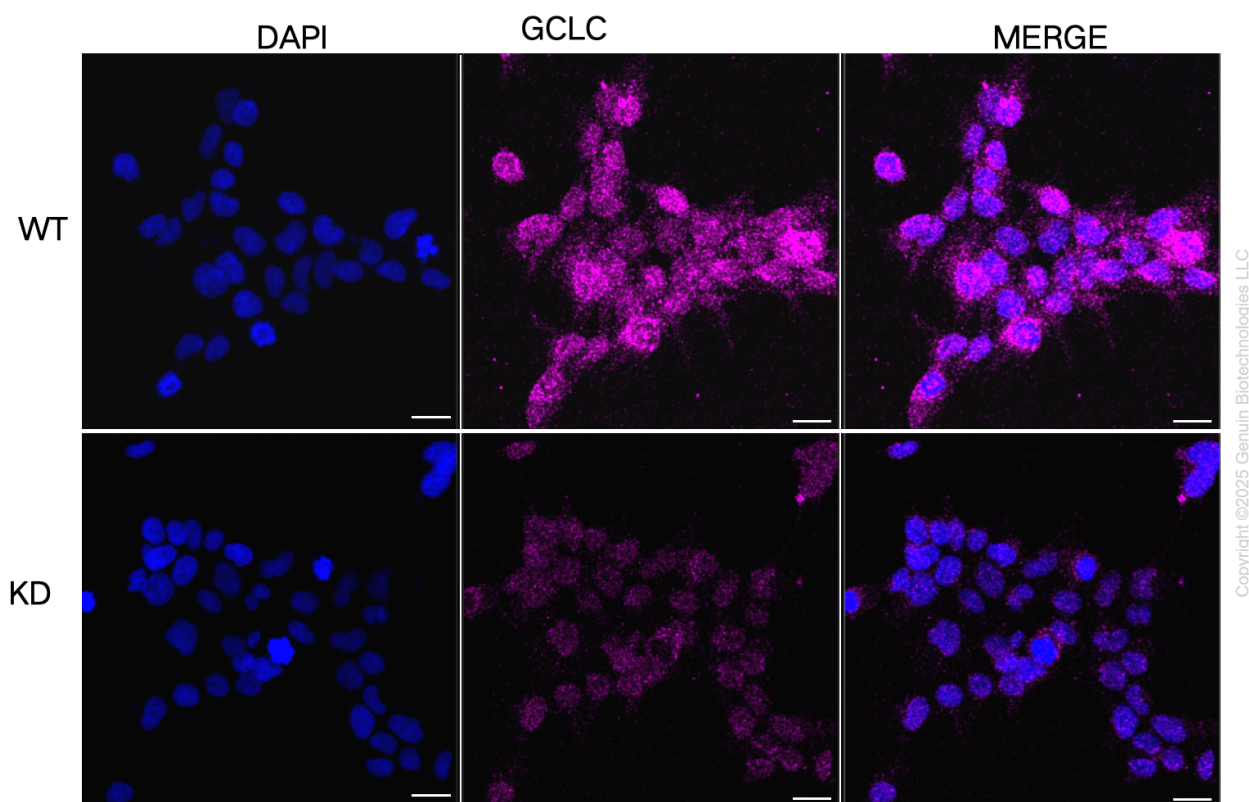


Western blotting analysis using anti-GCLC antibody (Cat#63281). GCLC expression in wild type (WT) and GCLC shRNA knockdown (KD) HeLa cells with 20 µg of total cell lysates. Hsp90 α serves as a loading control. The blot was incubated with anti-GCLC antibody (Cat#63281, 1:5,000) and HRP-conjugated goat anti-rabbit secondary antibody (Cat#201, 1:20,000) respectively. Image was developed using NaQ™ ECL Substrate Kit (Cat#716).



Copyright ©2025 Genuin Biotechnologies LLC

Validation of GCLC knockdown using flow cytometry. Wild-type(WT, Blue) and knockdown(KD, Green) HeLa cells were stained with anti-GCLC antibody (Cat#63281, 1:2,000) and analyzed using BD flow cytometer.



Immunocytochemical staining of HeLa cells using anti-GCLC antibody (Cat#63281, 1:1,000), Top panel: wild-type (WT); Bottom panel: GCLC shRNA knockdown (KD). Nuclei were stained blue with DAPI; GCLC was stained magenta with Alexa Fluor® 647. Scale bar, 20 μ m.