

KD-Validated Anti-G Protein-Coupled Receptor Kinase 6 Rabbit Monoclonal Antibody



Catalog #: 63283

Aliases

GRK6; G Protein-Coupled Receptor Kinase 6; GPRK6; EC 2.7.11.16; G Protein-Coupled Receptor Kinase GRK6; EC 2.7.11

Background

Gene Name: GRK6

NCBI Gene Entry: [2870](#)

UniProt Entry: [P43250](#)

Application Information

Molecular Weight: Predicted, 66 kDa, observed, 70 kDa

Clonality: Rabbit monoclonal antibody

Clone ID: 24GB4870

Species Reactivity: Human, mouse, rat

Applications Tested: Western blotting (WB), flow cytometry (FCM)

Immunogen

A synthesized peptide derived from human GRK6

Isotype

Rabbit IgG

Storage Buffer

Supplied in PBS (pH 7.4) containing 50% glycerol, and 0.02% sodium azide.

Storage

Store at -20 °C for one year.

Recommended Dilutions

Western Blotting (WB): 1:1,000-1:5,000

Flow Cytometry (FCM): 1:2,000

Note: This product is for research use only.

Validation Data

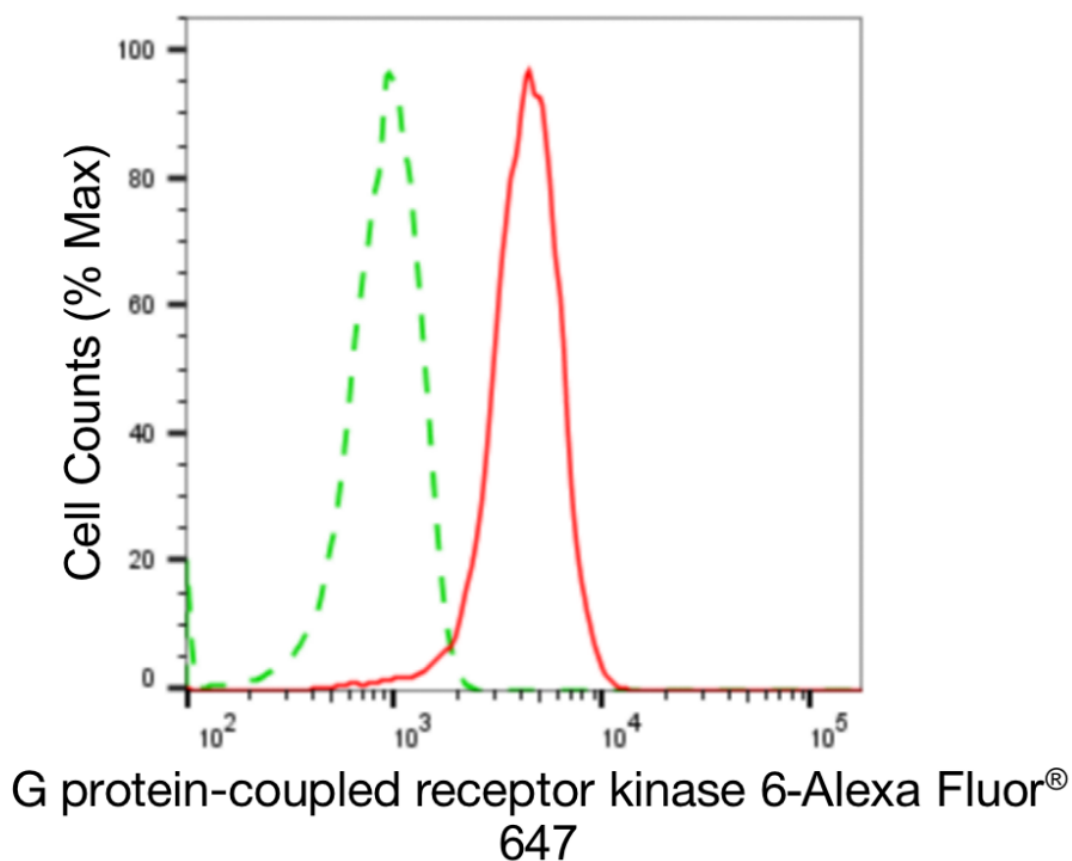
SUPPORT

SUPPORT@GENUINBIOTECH.COM
TEL: +1-540-855-7041

ORDERS

SALES@GENUINBIOTECH.COM
FAX: +1-540-855-7041

WWW.GENUINBIOTECH.COM

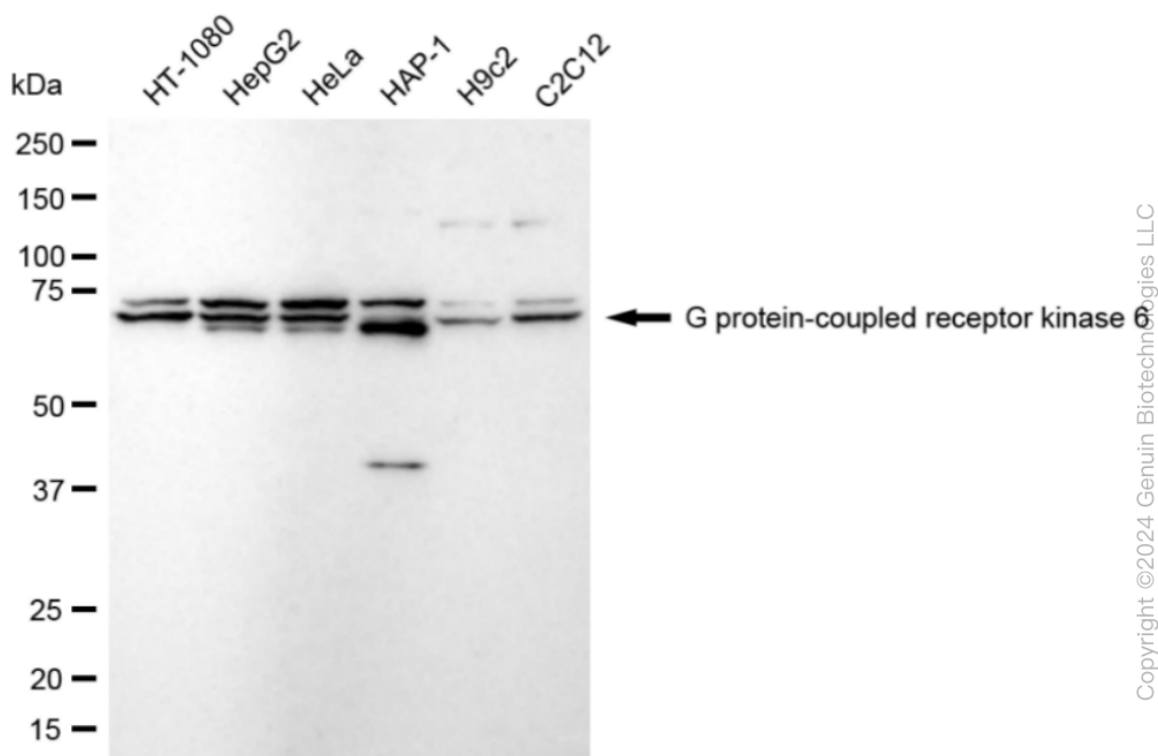


Copyright ©2024 Genuin Biotechnologies LLC

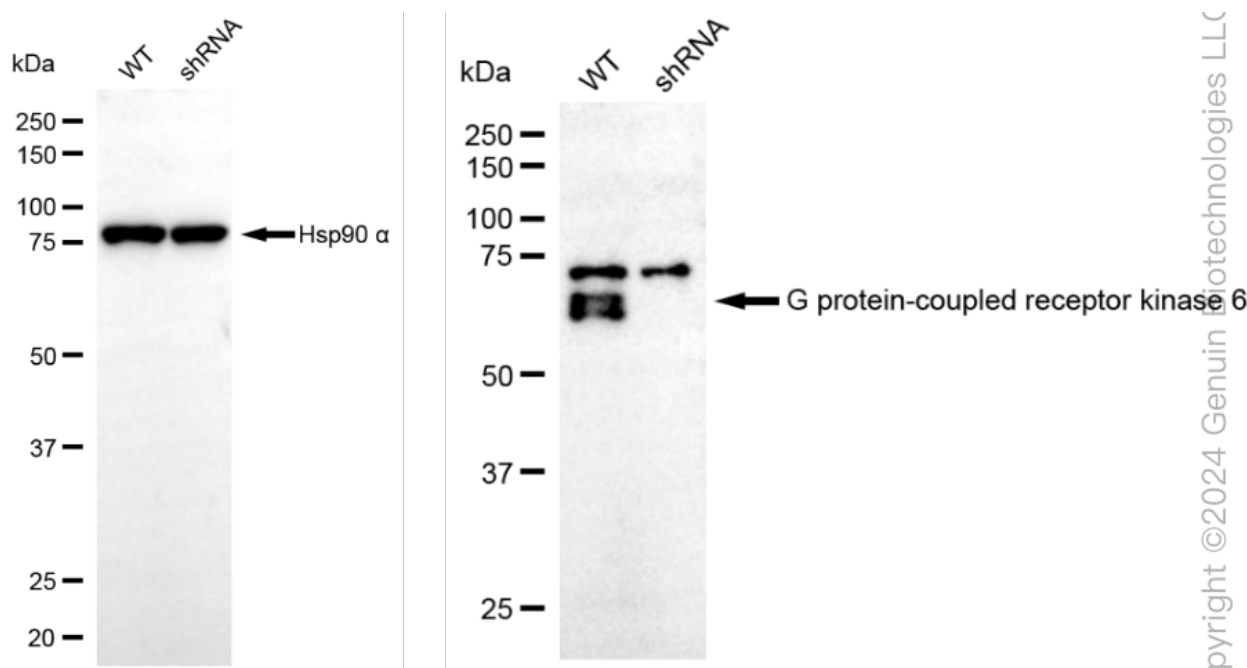
Flow cytometric analysis of G protein-coupled receptor kinase 6 expression in HepG2 cells using anti-G protein-coupled receptor kinase 6 antibody (Cat#63283, 1:2,000). Green, isotype control; red, G protein-coupled receptor kinase 6.

KD-Validated Anti-G Protein-Coupled Receptor Kinase 6 Rabbit Monoclonal Antibody

PAGE 3



Western blotting analysis using anti-G protein-coupled receptor kinase 6 antibody (Cat#63283). Total cell lysates (30 μ g) from various cell lines were loaded and separated by SDS-PAGE. The blot was incubated with anti-G protein-coupled receptor kinase 6 antibody (Cat#63283, 1:5,000) and HRP-conjugated goat anti-rabbit secondary antibody (Cat#201, 1:20,000) respectively. Image was developed using NaQ™ ECL Substrate Kit (Cat#716).



SUPPORT

SUPPORT@GENUINBIOTECH.COM
TEL: +1-540-855-7041

ORDERS

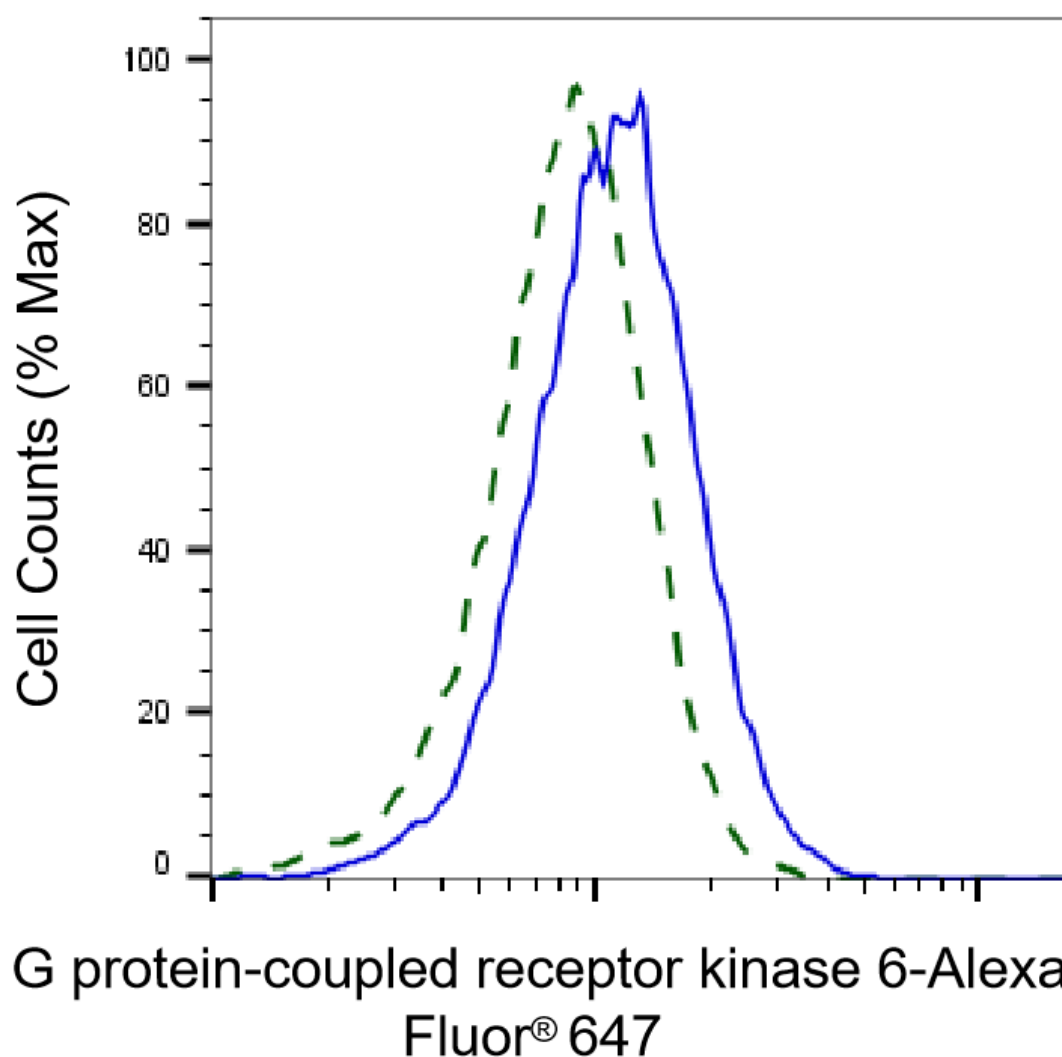
SALES@GENUINBIOTECH.COM
FAX: +1-540-855-7041

WWW.GENUINBIOTECH.COM

KD-Validated Anti-G Protein-Coupled Receptor Kinase 6 Rabbit Monoclonal Antibody

PAGE 4

Western blotting analysis using anti-G protein-coupled receptor kinase 6 antibody (Cat#63283). G protein-coupled receptor kinase 6 expression in wild type (WT) and G protein-coupled receptor kinase 6 (GRK6) shRNA knockdown (KD) HeLa cells with 20 µg of total cell lysates. Hsp90 α serves as a loading control. The blot was incubated with anti-G protein-coupled receptor kinase 6 antibody (Cat#63283, 1:5,000) and HRP-conjugated goat anti-rabbit secondary antibody (Cat#201, 1:20,000) respectively. Image was developed using NaQ™ ECL Substrate Kit (Cat#716).



Copyright ©2025 Genuin Biotechnologies LLC

Validation of G protein-coupled receptor kinase 6 knockdown using flow cytometry. Wild-type(WT, Blue) and knockdown(KD, Green) HeLa cells were stained with anti-G protein-coupled receptor kinase 6 antibody (Cat#63283, 1:2,000) and analyzed using BD flow cytometer.

SUPPORT

SUPPORT@GENUINBIOTECH.COM
TEL: +1-540-855-7041

ORDERS

SALES@GENUINBIOTECH.COM
FAX: +1-540-855-7041

WWW.GENUINBIOTECH.COM