

KD-Validated Anti-Kinesin Family Member 2C Rabbit Monoclonal Antibody



Catalog #: 63295

Aliases

KIF2C; Kinesin Family Member 2C; MCAK; CT139; KNSL6; Mitotic Centromere-Associated Kinesin; Kinesin-Like Protein KIF2C; Kinesin-Like Protein 6; Kinesin-Like 6 (Mitotic Centromere-Associated Kinesin); Testis Tissue Sperm-Binding Protein Li 68n

Background

Gene Name: KIF2C

NCBI Gene Entry: [11004](#)

UniProt Entry: [Q99661](#)

Application Information

Molecular Weight: Predicted, 81 kDa, observed, 75 kDa

Clonality: Rabbit monoclonal antibody

Clone ID: 24GB4930

Species Reactivity: Human

Applications Tested: Western blotting (WB), flow cytometry (FCM), immunocytochemistry (IC)

Immunogen

A synthesized peptide derived from human MCAK

Isotype

Rabbit IgG

Storage Buffer

Supplied in PBS (pH 7.4) containing 50% glycerol, and 0.02% sodium azide.

Storage

Store at -20 °C for one year.

Recommended Dilutions

Western Blotting (WB): 1:1,000-1:5,000

Flow Cytometry (FCM): 1:2,000

Immunocytochemistry (IC): 1:100-1:1,000

Note: This product is for research use only.

SUPPORT

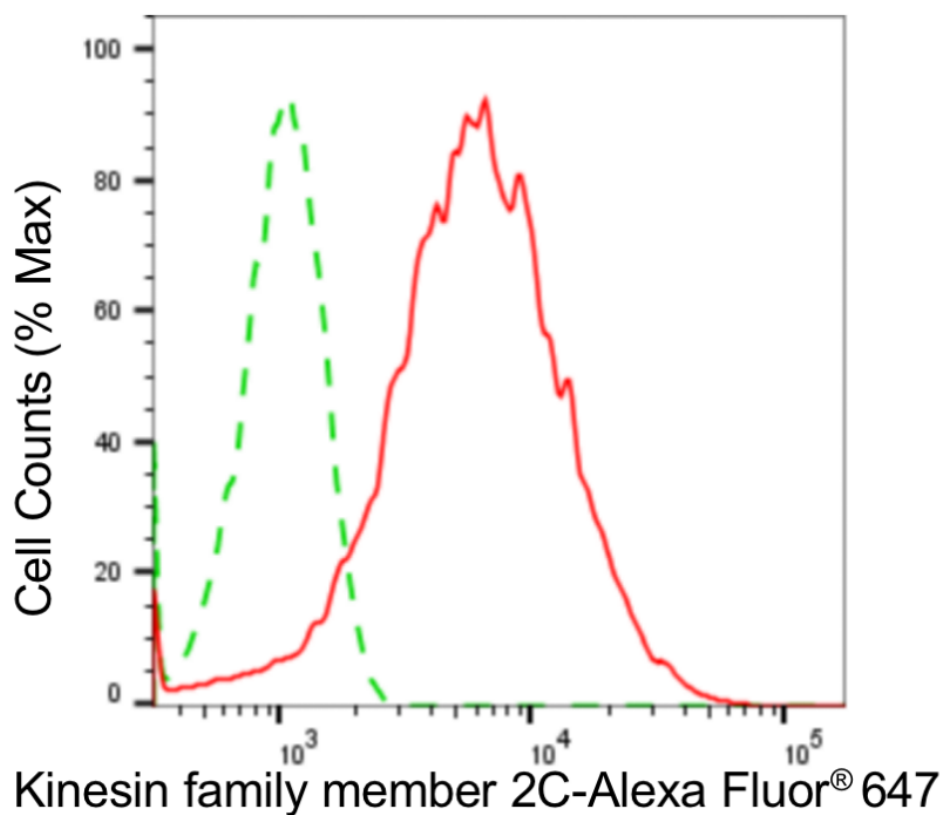
SUPPORT@GENUINBIOTECH.COM
TEL: +1-540-855-7041

ORDERS

SALES@GENUINBIOTECH.COM
FAX: +1-540-855-7041

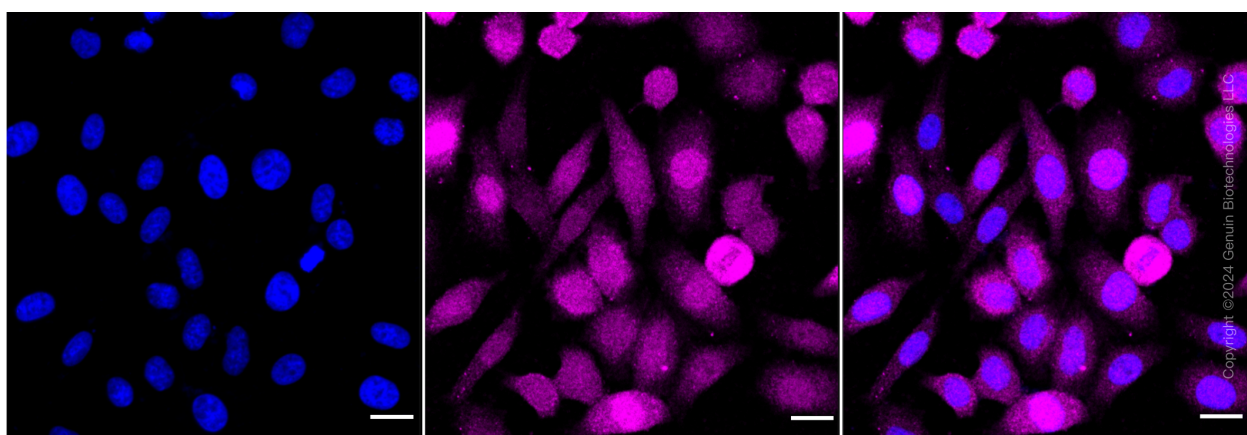
WWW.GENUINBIOTECH.COM

Validation Data



Copyright ©2024 Genuin Biotechnologies LLC

Flow cytometric analysis of kinesin family member 2C expression in HepG2 cells using anti-kinesin family member 2C antibody (Cat#63295, 1:2,000). Green, isotype control; red, kinesin family member 2C.



Immunocytochemical staining of HepG2 cells with anti-Kinesin family member 2C antibody (Cat#63295, 1:1,000). Nuclei were stained blue with DAPI; Kinesin family member 2C was stained magenta with Alexa Fluor® 647. Images were taken using Leica stellaris 5. Protein abundance based on laser Intensity and smart gain: Medium. Scale bar: 20 µm.

SUPPORT

SUPPORT@GENUINBIOTECH.COM
TEL: +1-540-855-7041

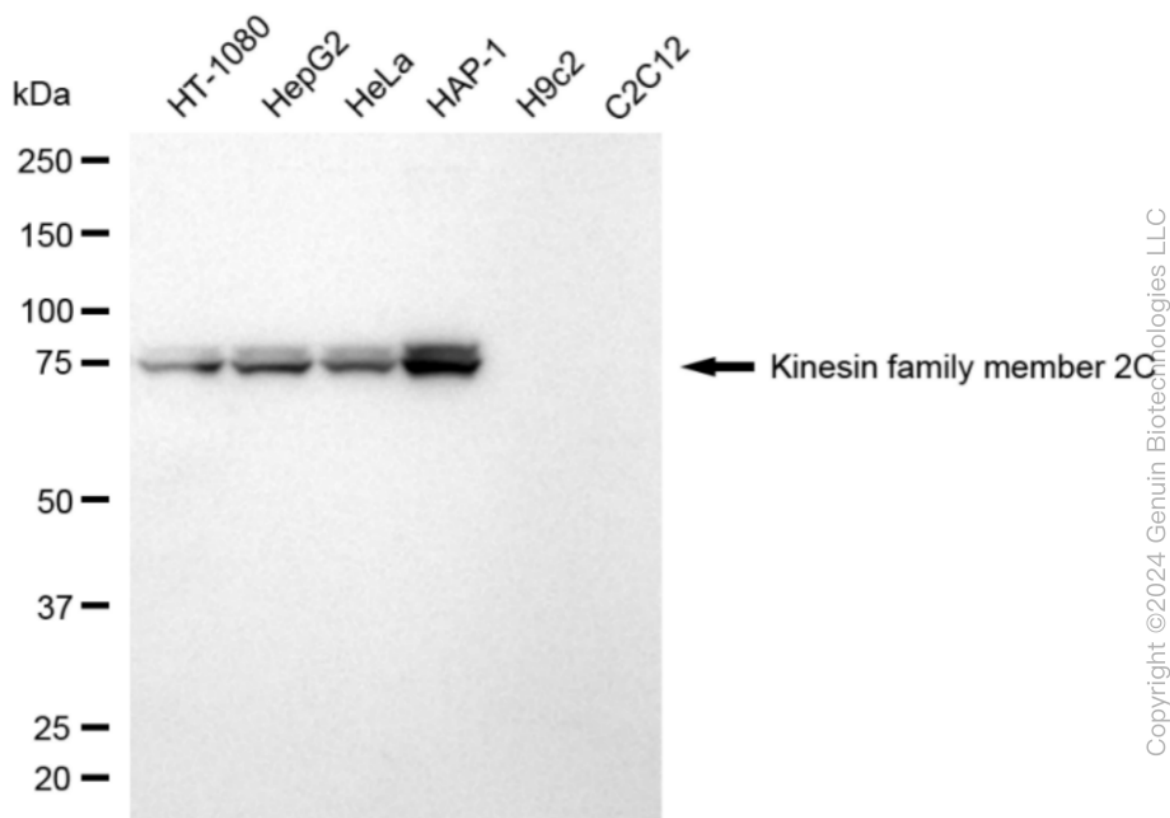
ORDERS

SALES@GENUINBIOTECH.COM
FAX: +1-540-855-7041

WWW.GENUINBIOTECH.COM

KD-Validated Anti-Kinesin Family Member 2C Rabbit Monoclonal Antibody

PAGE 3



Western blotting analysis using anti-kinesin family member 2C antibody (Cat#63295). Total cell lysates (30 μ g) from various cell lines were loaded and separated by SDS-PAGE. The blot was incubated with anti-kinesin family member 2C antibody (Cat#63295, 1:5,000) and HRP-conjugated goat anti-rabbit secondary antibody (Cat#201, 1:20,000) respectively. Image was developed using NaQ™ ECL Substrate Kit (Cat#716).

SUPPORT

SUPPORT@GENUINBIOTECH.COM
TEL: +1-540-855-7041

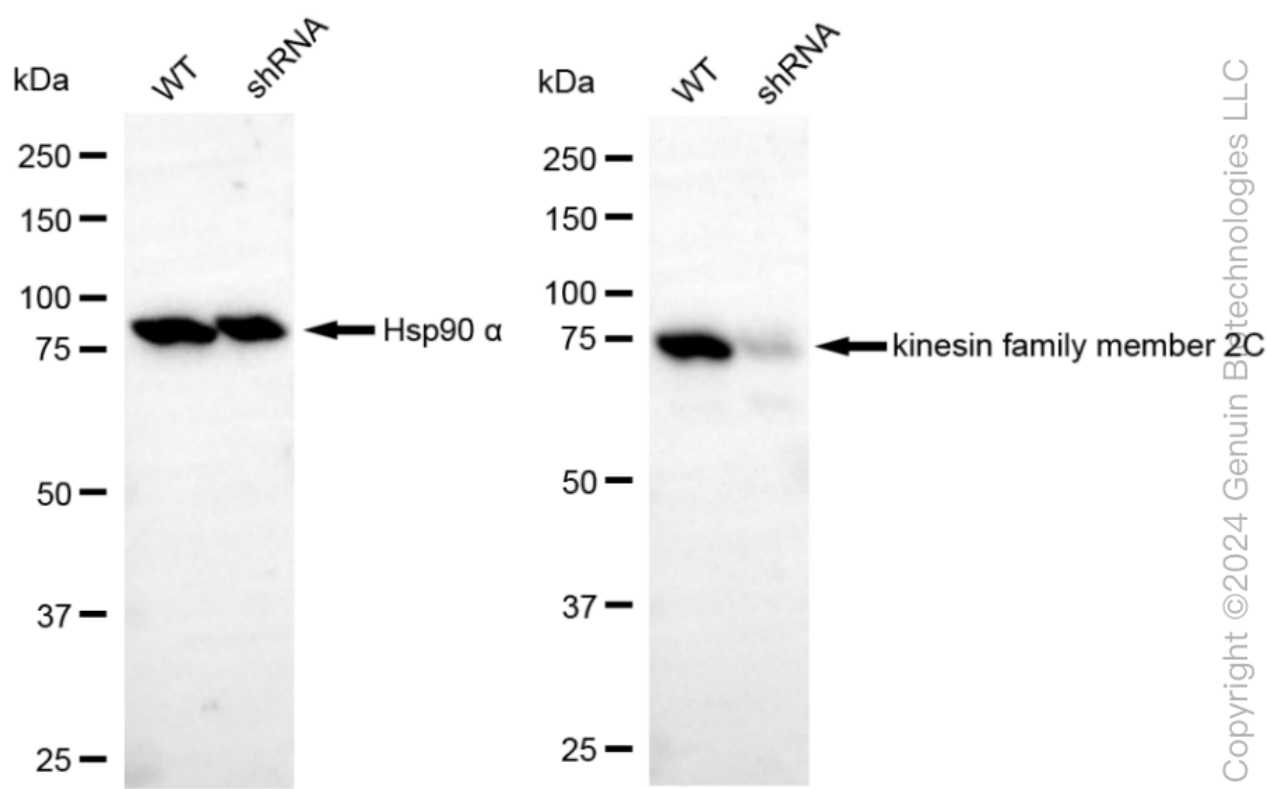
ORDERS

SALES@GENUINBIOTECH.COM
FAX: +1-540-855-7041

WWW.GENUINBIOTECH.COM

KD-Validated Anti-Kinesin Family Member 2C Rabbit Monoclonal Antibody

PAGE 4



Western blotting analysis using anti-kinesin family member 2C antibody (Cat#63295). Kinesin family member 2C expression in wild type (WT) and kinesin family member 2C (KIF2C) shRNA knockdown (KD) 293T cells with 20 µg of total cell lysates. Hsp90 α serves as a loading control. The blot was incubated with anti-kinesin family member 2C antibody (Cat#63295, 1:5,000) and HRP-conjugated goat anti-rabbit secondary antibody (Cat#201, 1:20,000) respectively. Image was developed using NaQ™ ECL Substrate Kit (Cat#716).

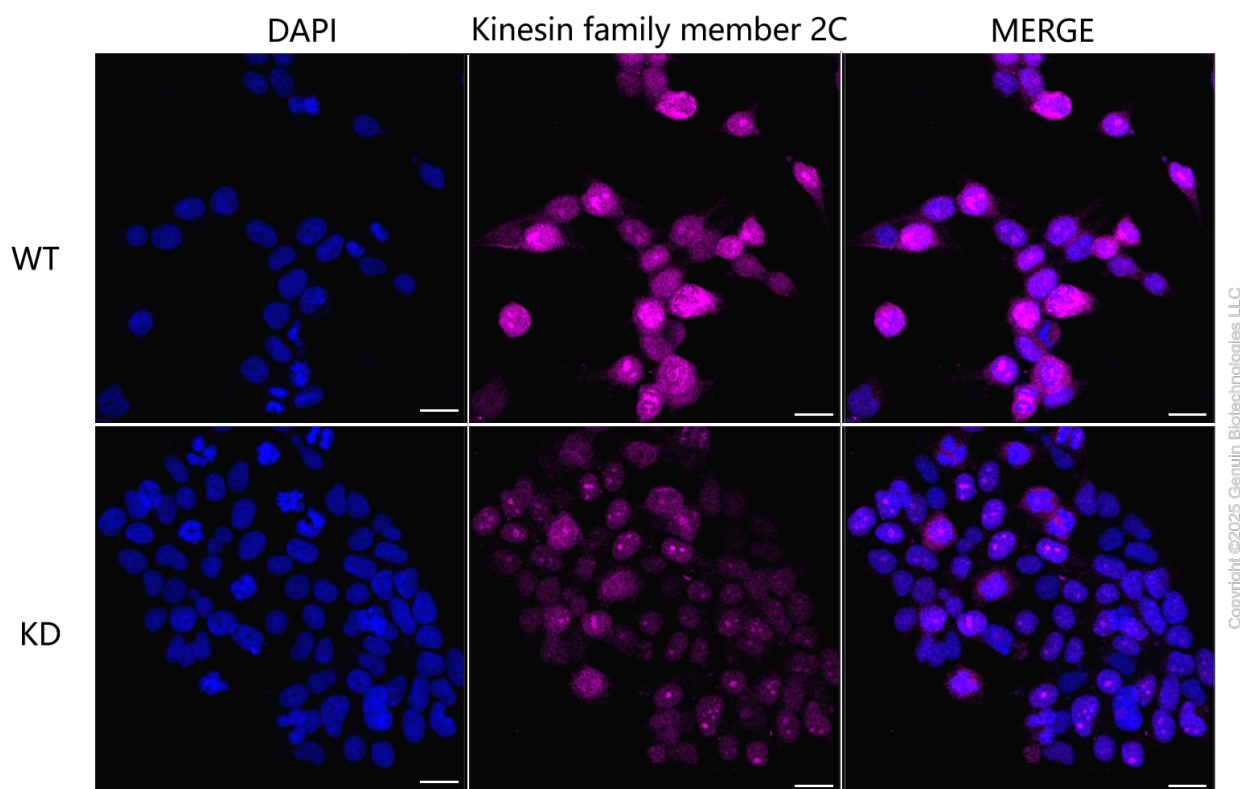
SUPPORT

SUPPORT@GENUINBIOTECH.COM
TEL: +1-540-855-7041

ORDERS

SALES@GENUINBIOTECH.COM
FAX: +1-540-855-7041

WWW.GENUINBIOTECH.COM



Immunocytochemical staining of 293T cells using anti-Kinesin family member 2C antibody (Cat#63295, 1:1,000), Top panel: wild-type (WT); Bottom panel: Kinesin family member 2C shRNA knockdown (KD). Nuclei were stained blue with DAPI; Kinesin family member 2C was stained magenta with Alexa Fluor® 647. Scale bar, 20 μ m. Permeabilization: Triton.