

KD-Validated Anti-Linker For Activation Of T Cells Rabbit Monoclonal Antibody



Catalog #: 63297

Aliases

LAT; Linker For Activation Of T Cells; LAT1; Linker For Activation Of T Cells, Transmembrane Adaptor; Linker For Activation Of T-Cells Family Member 1; 36 KDa Phosphotyrosine Adapter Protein; P36-38; Pp36; 36 KDa Phospho-Tyrosine Adapter Protein; 36 KDa Phospho-Tyrosine Adaptor Protein; IMD52

Background

Gene Name: LAT

NCBI Gene Entry: [27040](#)

UniProt Entry: [O43561](#)

Application Information

Molecular Weight: Predicted, 28 kDa, observed, 36 kDa

Clonality: Rabbit monoclonal antibody

Clone ID: 24GB4940

Species Reactivity: Human

Applications Tested: Western blotting (WB), flow cytometry (FCM), immunocytochemistry (IC)

Immunogen

A synthesized peptide derived from human LAT

Isotype

Rabbit IgG

Storage Buffer

Supplied in PBS (pH 7.4) containing 50% glycerol, and 0.02% sodium azide.

Storage

Store at -20 °C for one year.

Recommended Dilutions

Western Blotting (WB): 1:1,000-1:5,000

Flow Cytometry (FCM): 1:2,000

Immunocytochemistry (IC): 1:100-1:1,000

SUPPORT

SUPPORT@GENUINBIOTECH.COM
TEL: +1-540-855-7041

ORDERS

SALES@GENUINBIOTECH.COM
FAX: +1-540-855-7041

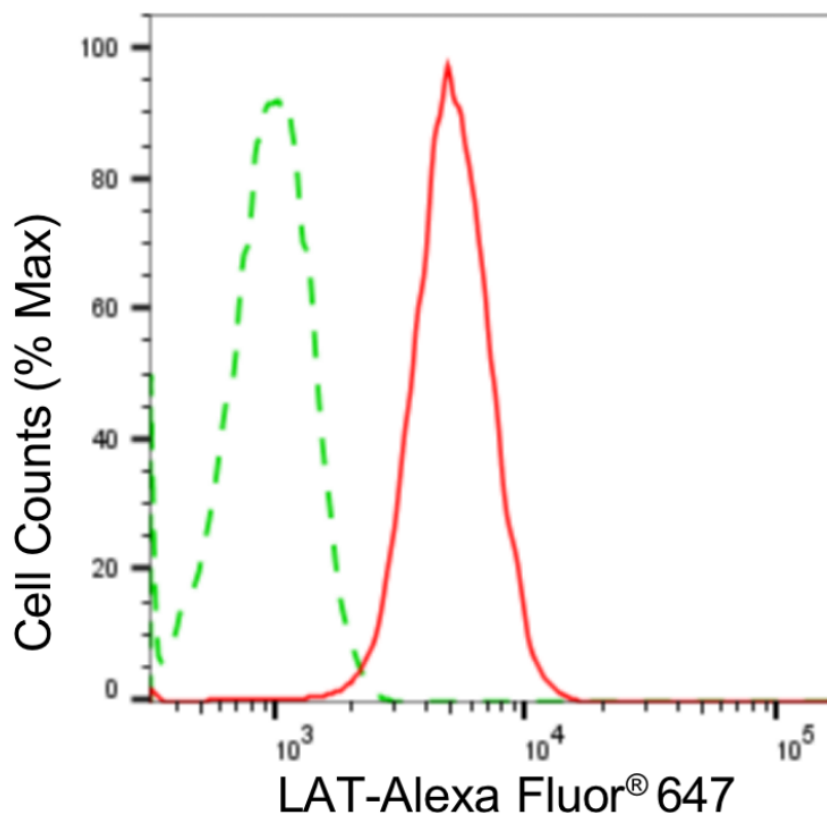
WWW.GENUINBIOTECH.COM

KD-Validated Anti-Linker For Activation Of T Cells Rabbit Monoclonal Antibody

PAGE 2

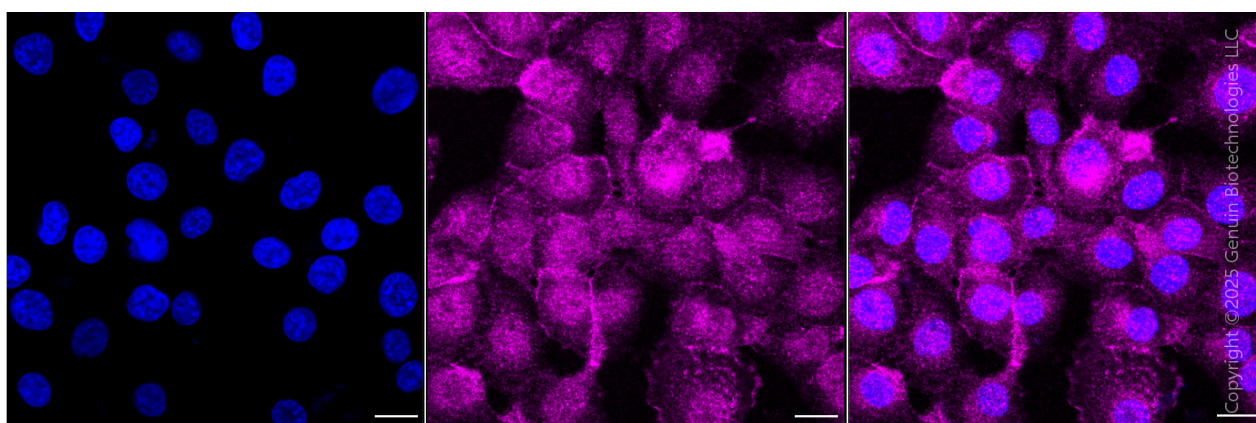
Note: This product is for research use only.

Validation Data



Copyright ©2024 Genuin Biotechnologies LLC

Flow cytometric analysis of LAT expression in HT-1080 cells using anti-LAT antibody (Cat#63297, 1:2,000). Green, isotype control; red, LAT.



Copyright ©2025 Genuin Biotechnologies LLC

Immunocytochemical staining of HT-1080 cells with anti-LAT antibody (Cat#63297, 1:1,000). Nuclei were stained blue with DAPI; LAT was stained magenta with Alexa Fluor® 647. Images were taken using Leica stellaris 5. Protein abundance based on laser Intensity and smart gain: Medium. Scale bar, 20 µm.

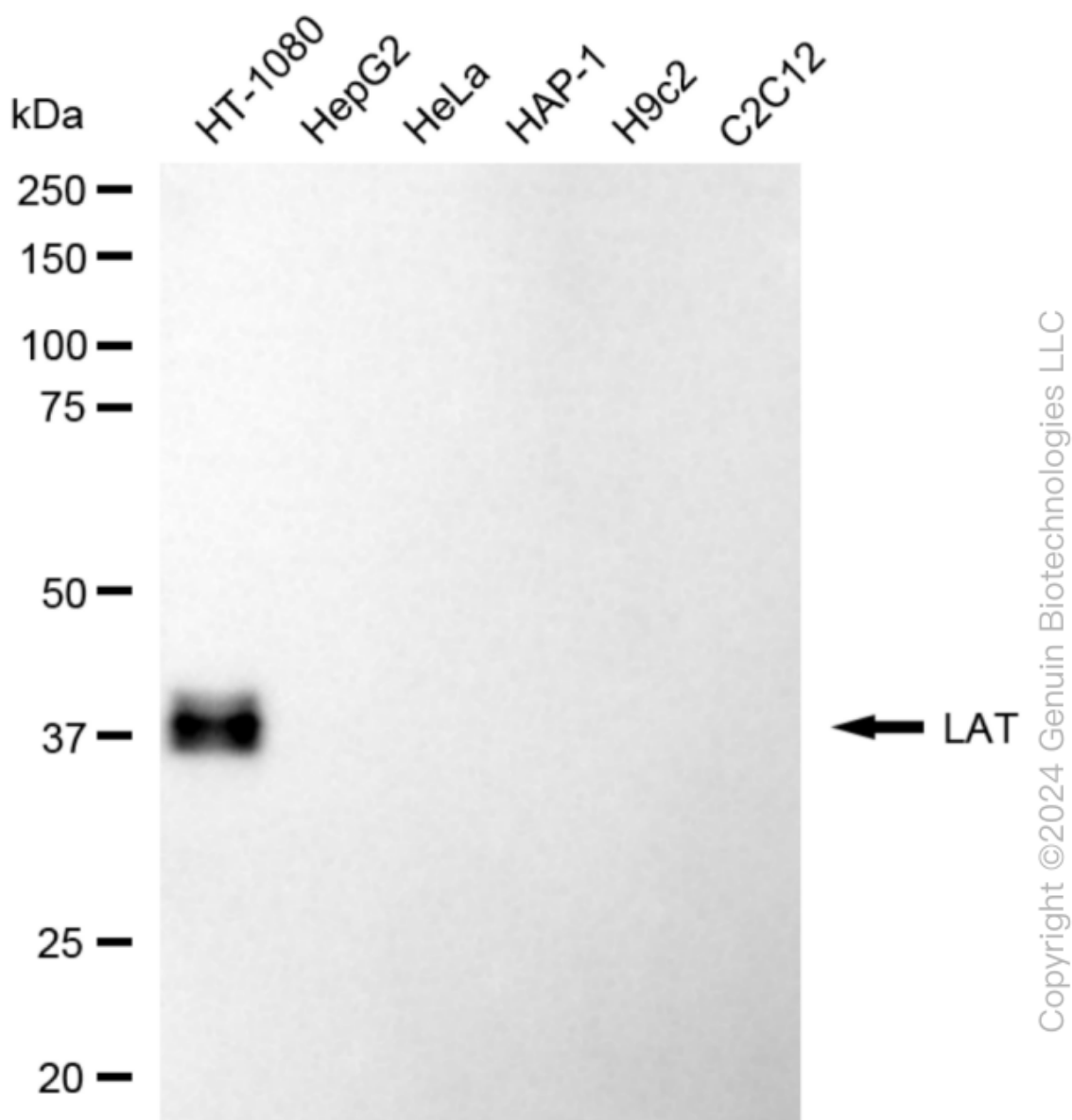
SUPPORT

SUPPORT@GENUINBIOTECH.COM
TEL: +1-540-855-7041

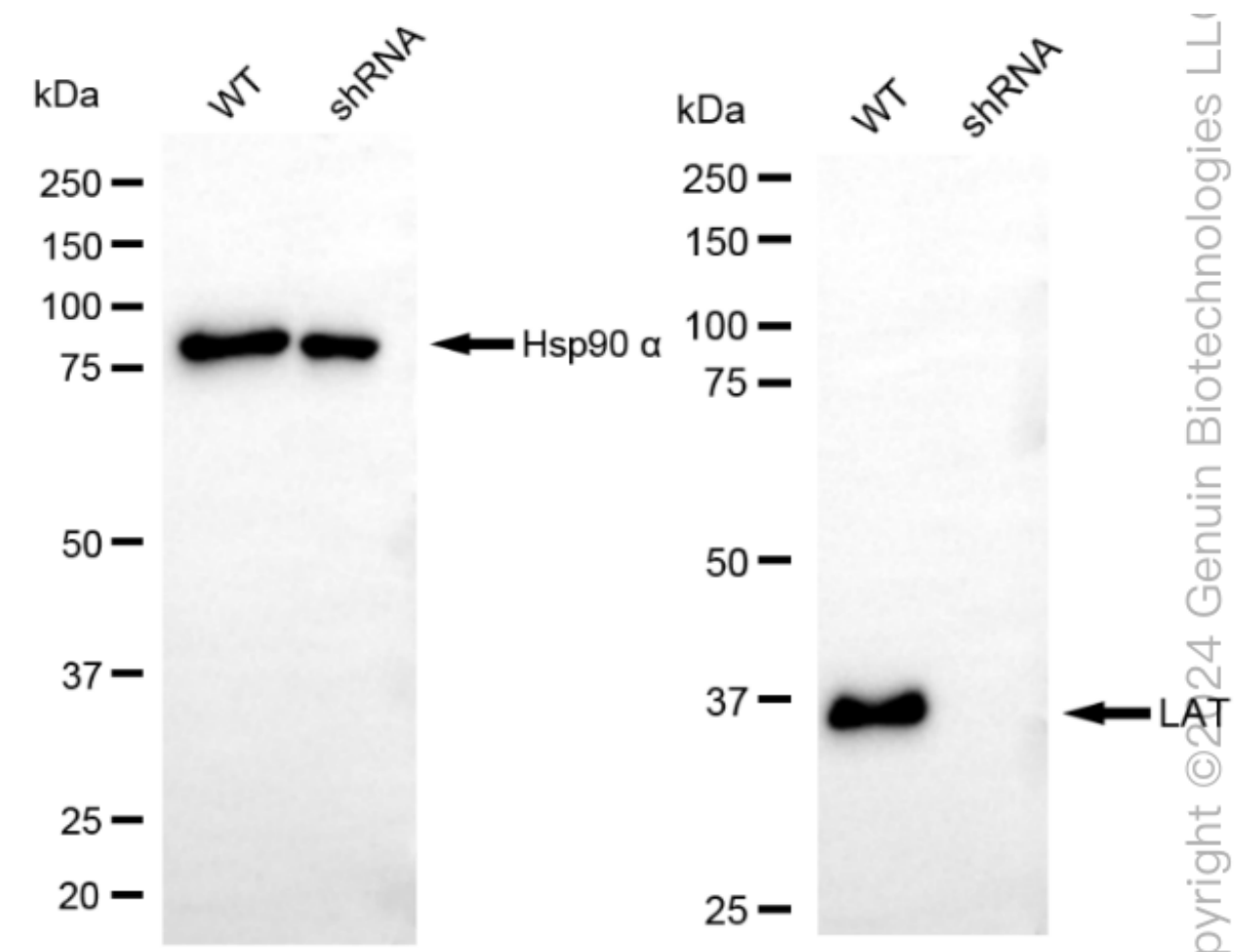
ORDERS

SALES@GENUINBIOTECH.COM
FAX: +1-540-855-7041

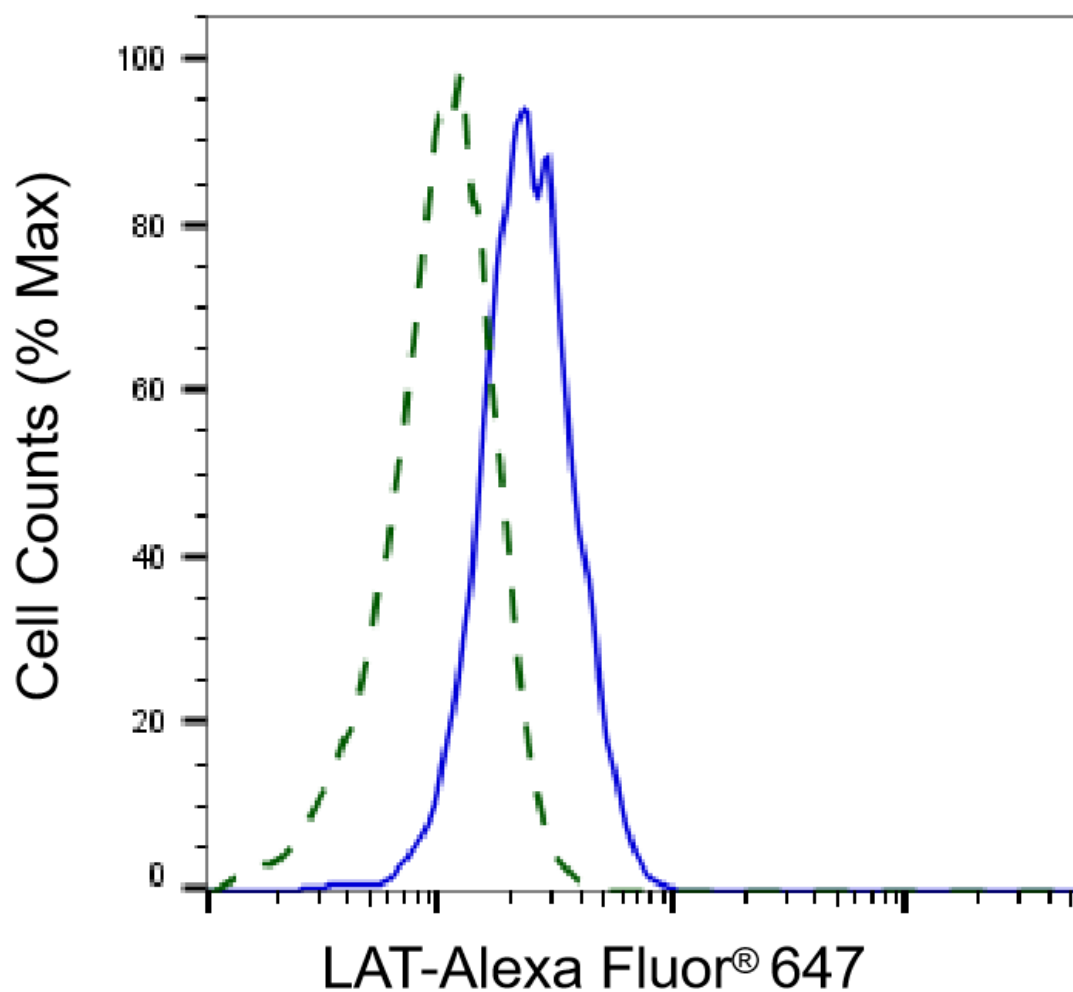
WWW.GENUINBIOTECH.COM



Western blotting analysis using anti-LAT antibody (Cat#63297). Total cell lysates (30 µg) from various cell lines were loaded and separated by SDS-PAGE. The blot was incubated with anti-LAT antibody (Cat#63297, 1:5,000) and HRP-conjugated goat anti-rabbit secondary antibody (Cat#201, 1:20,000) respectively. Image was developed using FeQ™ ECL Substrate Kit (Cat#226). LAT, linker for activation of T cells.



Western blotting analysis using anti-LAT antibody (Cat#63297). LAT expression in wild type (WT) and LAT shRNA knockdown (KD) HT-1080 cells with 20 µg of total cell lysates. Hsp90 α serves as a loading control. The blot was incubated with anti-LAT antibody (Cat#63297, 1:5,000) and HRP-conjugated goat anti-rabbit secondary antibody (Cat#201, 1:20,000) respectively. Image was developed using NaQ™ ECL Substrate Kit (Cat#716).



Copyright ©2025 Genuin Biotechnologies LLC

Validation of LAT knockdown using flow cytometry. Wild-type(WT, Blue) and knockdown(KD, Green) HeLa cells were stained with anti-LAT antibody (Cat#63297, 1:2,000) and analyzed using BD flow cytometer.