

KD-Validated Anti-LDL Receptor Related Protein 1 Rabbit Monoclonal Antibody



Catalog #: 63298

Aliases

LRP1; LDL Receptor Related Protein 1; APOER; Alpha-2-Macroglobulin Receptor; IGFBP3R1; IGFBP-3R; LRP1A; CD91; A2MR; LRP; APR; Prolow-Density Lipoprotein Receptor-Related Protein 1; Low Density Lipoprotein Receptor-Related Protein 1; Apolipoprotein E Receptor; Transforming Growth Factor- β Receptor Type V; TbetaR-V/LRP-1/IGFBP-3 Receptor; Type V Tgf-Beta Receptor; CD91 Antigen; EC 3.4.21.9; EC 1.1.1.94; IGFBP3R; TGFBR5; LRP-1; KPA

Background

Gene Name: LRP1

NCBI Gene Entry: [4035](#)

UniProt Entry: [Q07954](#)

Application Information

Molecular Weight: Predicted, 50 kDa, observed, 85 kDa

Clonality: Rabbit monoclonal antibody

Clone ID: 24GB4945

Species Reactivity: Human, mouse, rat

Applications Tested: Western blotting (WB), immunocytochemistry (IC)

Immunogen

A synthesized peptide derived from human LRP1

Isotype

Rabbit IgG

Storage Buffer

Supplied in PBS (pH 7.4) containing 50% glycerol, and 0.02% sodium azide.

Storage

Store at -20 °C for one year.

Recommended Dilutions

Western Blotting (WB): 1:1,000-1:5,000

Immunocytochemistry (IC): 1:100-1:1,000

SUPPORT

SUPPORT@GENUINBIOTECH.COM
TEL: +1-540-855-7041

ORDERS

SALES@GENUINBIOTECH.COM
FAX: +1-540-855-7041

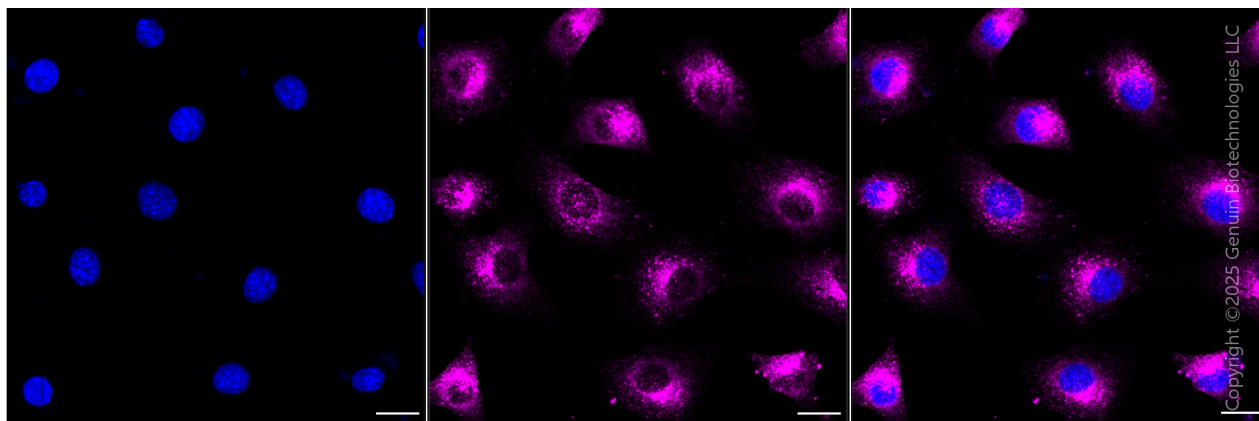
WWW.GENUINBIOTECH.COM

KD-Validated Anti-LDL Receptor Related Protein 1 Rabbit Monoclonal Antibody

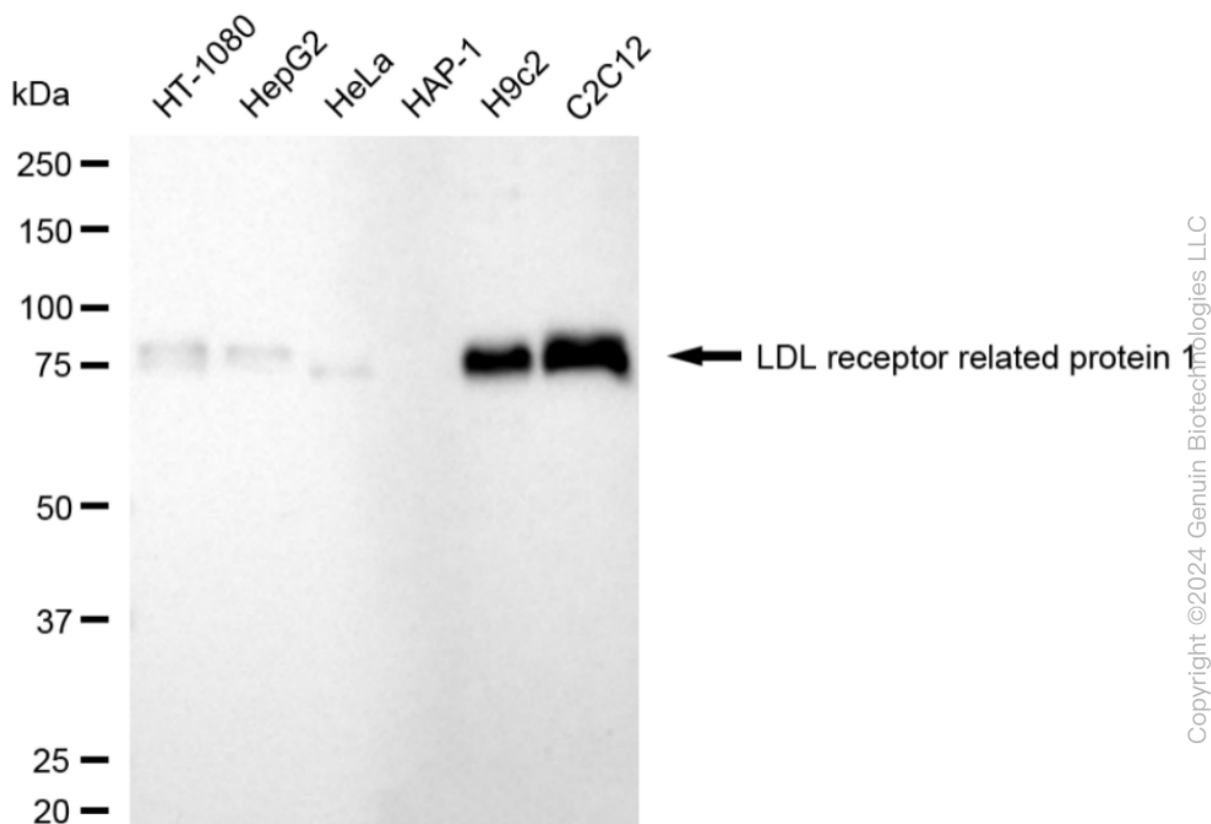
PAGE 2

Note: This product is for research use only.

Validation Data



Immunocytochemical staining of C2C12 cells with anti-LDL receptor related protein 1 antibody (Cat#63298, 1:1,000). Nuclei were stained blue with DAPI; LDL receptor related protein 1 was stained magenta with Alexa Fluor® 647. Images were taken using Leica stellaris 5. Protein abundance based on laser Intensity and smart gain: High. Scale bar, 20 μ m.



Western blotting analysis using anti-LDL receptor related protein 1 antibody (Cat#63298). Total cell lysates (30 μ g) from various cell lines were loaded and separated by SDS-PAGE. The blot was

SUPPORT

SUPPORT@GENUINBIOTECH.COM
TEL: +1-540-855-7041

ORDERS

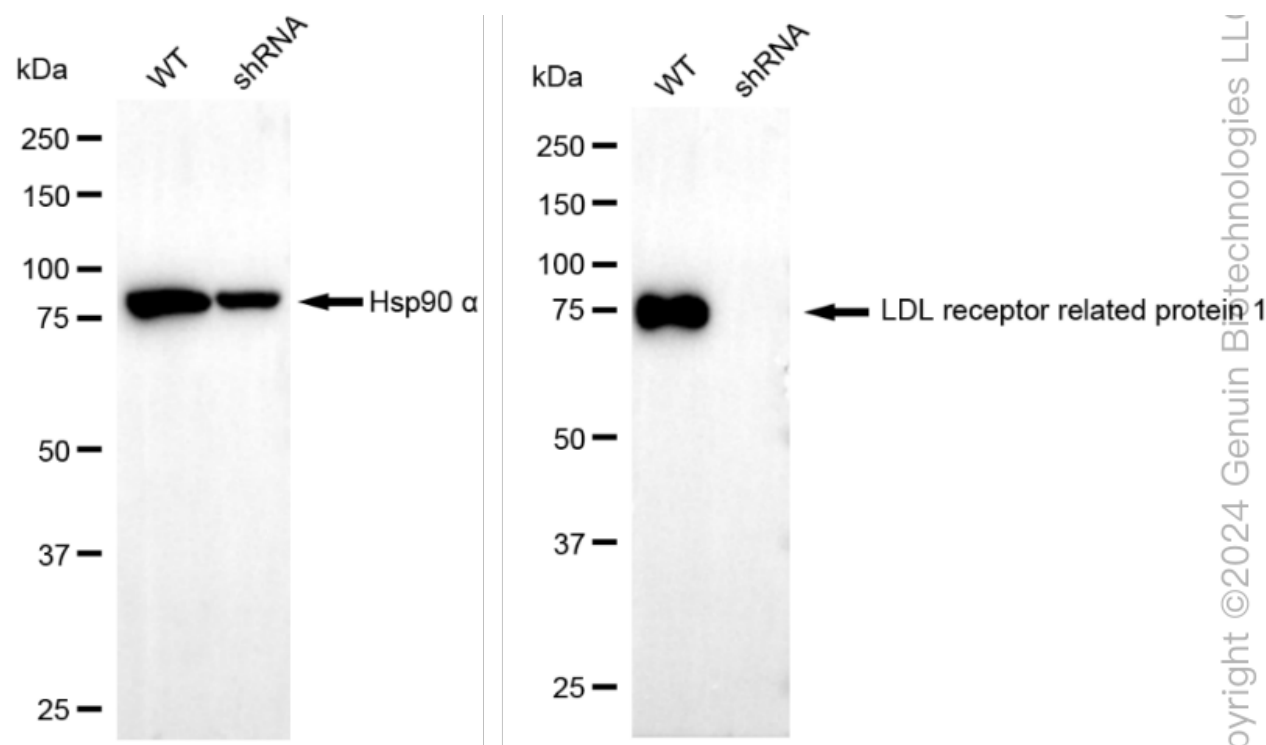
SALES@GENUINBIOTECH.COM
FAX: +1-540-855-7041

WWW.GENUINBIOTECH.COM

KD-Validated Anti-LDL Receptor Related Protein 1 Rabbit Monoclonal Antibody

PAGE 3

incubated with anti-LDL receptor related protein 1 antibody (Cat#63298, 1:5,000) and HRP-conjugated goat anti-rabbit secondary antibody (Cat#201, 1:20,000) respectively. Image was developed using NaQ™ ECL Substrate Kit (Cat#716).



Western blotting analysis using anti-LDL receptor related protein 1 antibody (Cat#63298). LDL receptor related protein 1 expression in wild type (WT) and LDL receptor related protein 1 (LRP1) shRNA knockdown (KD) HeLa cells with 20 µg of total cell lysates. β-Tubulin serves as a loading control. The blot was incubated with anti-LDL receptor related protein 1 antibody (Cat#63298, 1:5,000) and HRP-conjugated goat anti-rabbit secondary antibody (Cat#201, 1:20,000) respectively. Image was developed using NaQ™ ECL Substrate Kit (Cat#716).

SUPPORT

SUPPORT@GENUINBIOTECH.COM
TEL: +1-540-855-7041

ORDERS

SALES@GENUINBIOTECH.COM
FAX: +1-540-855-7041

WWW.GENUINBIOTECH.COM