

# KD-Validated Anti-Mitotic Arrest Deficient 2 Like 2 Rabbit Monoclonal Antibody



**Catalog #: 63299**

## Aliases

MAD2L2; Mitotic Arrest Deficient 2 Like 2; MAD2B; REV7; POLZ2; FANCV; MAD2 (Mitotic Arrest Deficient, Yeast, Homolog)-Like 2; Polymerase (DNA-Directed), Zeta 2, Accessory Subunit; Mitotic Spindle Assembly Checkpoint Protein MAD2B; Mitotic Arrest Deficient 2-Like Protein 2; Mitotic Arrest Deficient Homolog-Like 2; MAD2-Like Protein 2; REV7 Homolog; HREV7; MAD2 Mitotic Arrest Deficient-Like 2

## Background

Gene Name: MAD2L2

NCBI Gene Entry: [10459](#)

UniProt Entry: [Q9UI95](#)

## Application Information

Molecular Weight: Predicted, 24 kDa, observed, 24 kDa

Clonality: Rabbit monoclonal antibody

Clone ID: 24GB4950

Species Reactivity: Human

Applications Tested: Western blotting (WB), flow cytometry (FCM), immunocytochemistry (IC)

## Immunogen

A synthesized peptide derived from human Mad2L2

## Isotype

Rabbit IgG

## Storage Buffer

Supplied in PBS (pH 7.4) containing 50% glycerol, and 0.02% sodium azide.

## Storage

Store at -20 °C for one year.

## Recommended Dilutions

Western Blotting (WB): 1:1,000-1:5,000

Flow Cytometry (FCM): 1:2,000

Immunocytochemistry (IC): 1:100-1:1,000

---

### SUPPORT

SUPPORT@GENUINBIOTECH.COM  
TEL: +1-540-855-7041

### ORDERS

SALES@GENUINBIOTECH.COM  
FAX: +1-540-855-7041

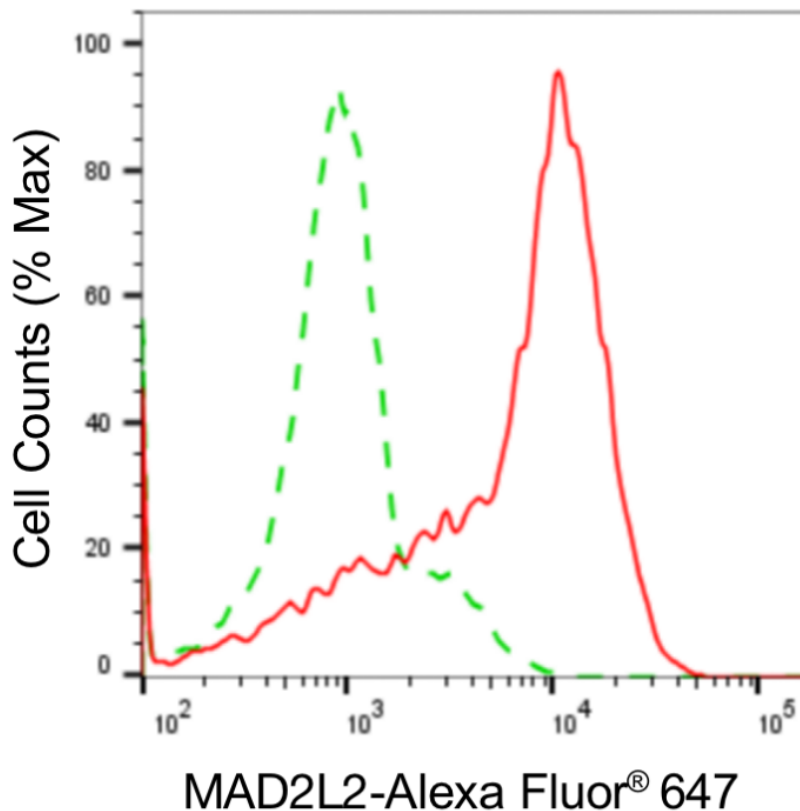
[WWW.GENUINBIOTECH.COM](http://WWW.GENUINBIOTECH.COM)

## KD-Validated Anti-Mitotic Arrest Deficient 2 Like 2 Rabbit Monoclonal Antibody

PAGE 2

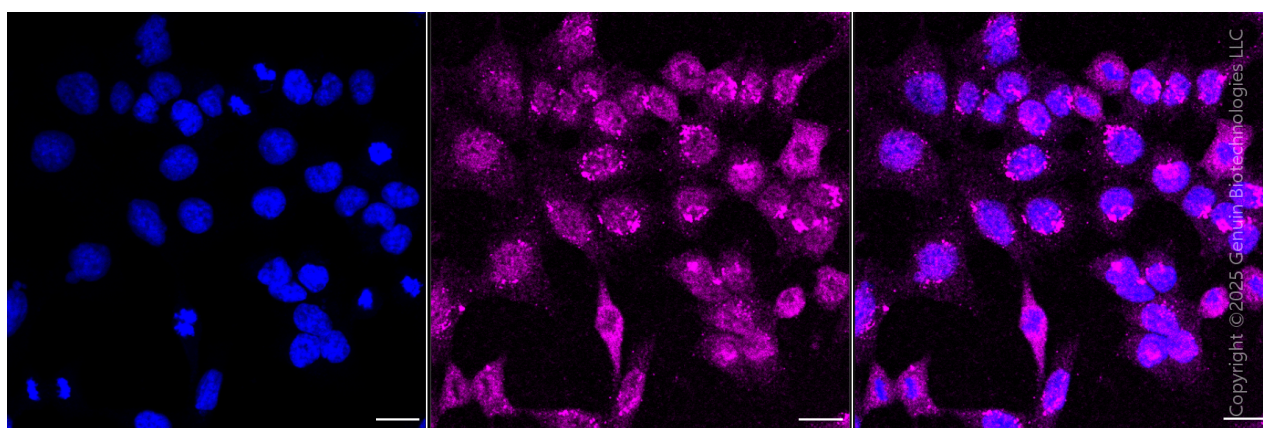
**Note:** This product is for research use only.

### Validation Data



Copyright ©2024 Genuin Biotechnologies LLC

Flow cytometric analysis of MAD2L2 expression in HAP-1 cells using anti-MAD2L2 antibody (Cat#63299, 1:2,000). Green, isotype control; red, MAD2L2.



Immunocytochemical staining of HAP1 cells with anti-MAD2L2 antibody (Cat#63299, 1:1,000). Nuclei were stained blue with DAPI; MAD2L2 was stained magenta with Alexa Fluor® 647. Images were taken using Leica stellaris 5. Protein abundance based on laser Intensity and smart gain: Medium. Scale bar, 20  $\mu$ m.

#### SUPPORT

SUPPORT@GENUINBIOTECH.COM  
TEL: +1-540-855-7041

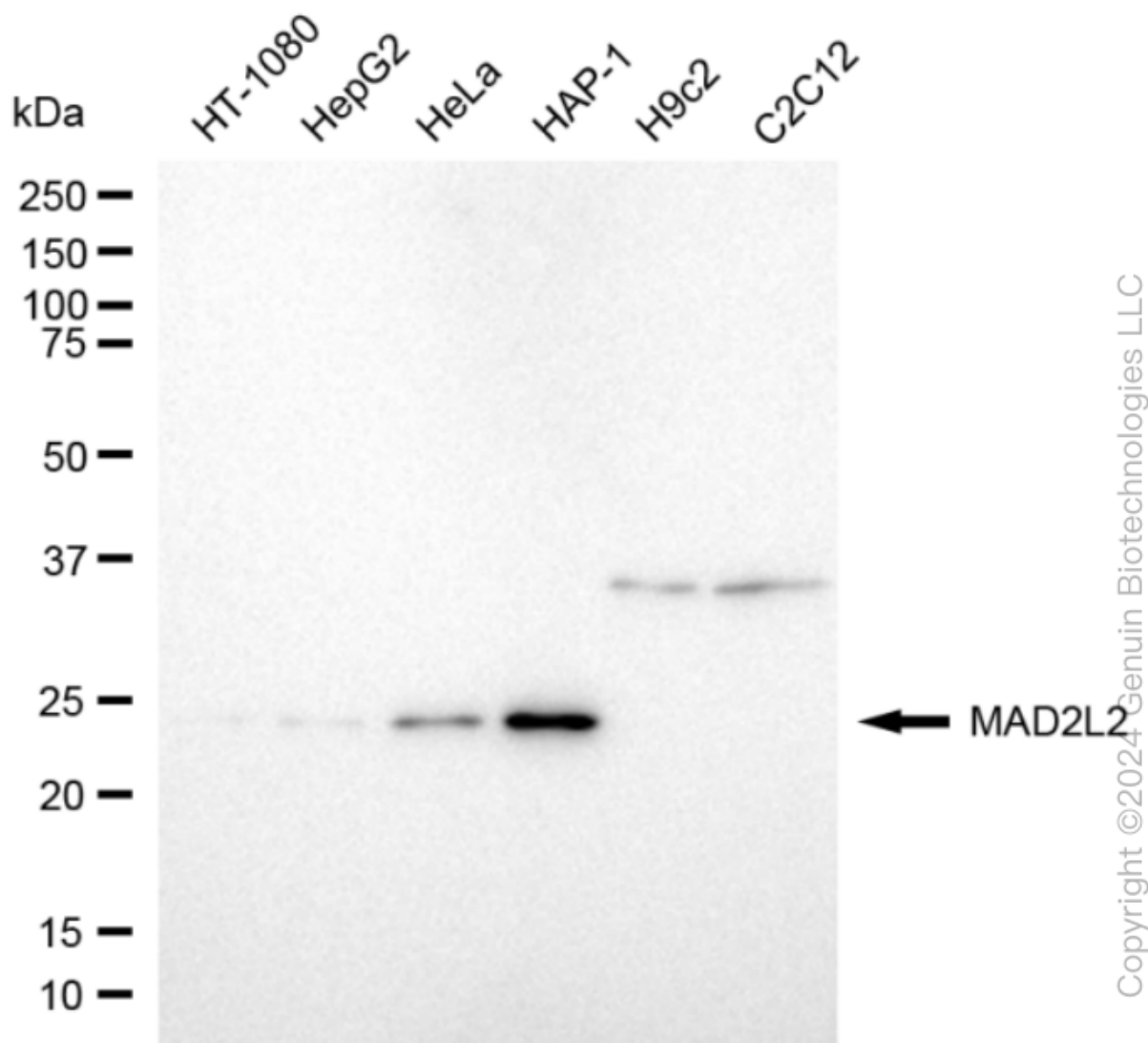
#### ORDERS

SALES@GENUINBIOTECH.COM  
FAX: +1-540-855-7041

WWW.GENUINBIOTECH.COM

## KD-Validated Anti-Mitotic Arrest Deficient 2 Like 2 Rabbit Monoclonal Antibody

PAGE 3



Western blotting analysis using anti-MAD2L2 antibody (Cat#63299). Total cell lysates (30 µg) from various cell lines were loaded and separated by SDS-PAGE. The blot was incubated with anti-MAD2L2 antibody (Cat#63299, 1:5,000) and HRP-conjugated goat anti-rabbit secondary antibody (Cat#201, 1:20,000) respectively. Image was developed using NaQ™ ECL Substrate Kit (Cat#716). MAD2L2, mitotic arrest deficient 2 like 2.

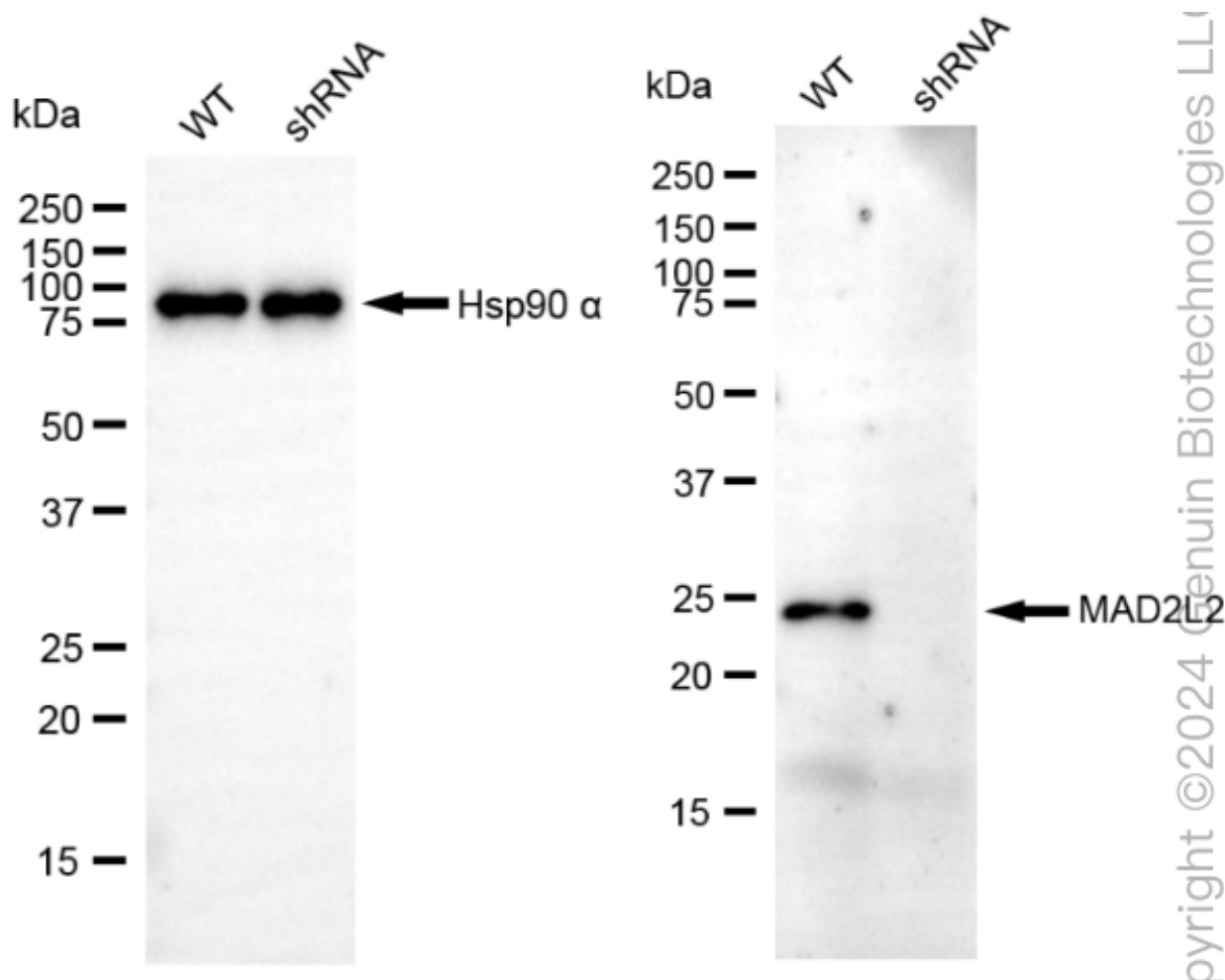
### SUPPORT

SUPPORT@GENUINBIOTECH.COM  
TEL: +1-540-855-7041

### ORDERS

SALES@GENUINBIOTECH.COM  
FAX: +1-540-855-7041

WWW.GENUINBIOTECH.COM



Western blotting analysis using anti-MAD2L2 antibody (Cat#63299). MAD2L2 expression in wild-type (WT) and MAD2L2 shRNA knockdown (KD) HeLa cells with 20 µg of total cell lysates. β-Tubulin serves as a loading control. The blot was incubated with anti-MAD2L2 antibody (Cat#63299, 1:5,000) and HRP-conjugated goat anti-rabbit secondary antibody (Cat#201, 1:20,000) respectively. Image was developed using NaQ™ ECL Substrate Kit (Cat#716).