

KD-Validated Anti-MFN1 Rabbit Monoclonal Antibody



Catalog #: 63303

Aliases

MFN1; Mitofusin 1; Transmembrane GTPase MFN1; Mitofusin-1; Fzo Homolog; FLJ20693; Mitochondrial Transmembrane GTPase FZO-2; Mitochondrial Transmembrane GTPaseFzo-1; Putative Transmembrane GTPase; EC 3.6.5.-; EC 3.6.5; Hfzo1; Hfzo2

Background

Gene Name: MFN1

NCBI Gene Entry: [55669](#)

UniProt Entry: [Q8IWA4](#)

Application Information

Molecular Weight: Predicted, 84 kDa, observed, 75 kDa

Clonality: Rabbit monoclonal antibody

Clone ID: 24GB4970

Species Reactivity: Human, mouse, rat

Applications Tested: Western blotting (WB), flow cytometry (FCM), immunocytochemistry (IC)

Immunogen

A synthesized peptide derived from rat Mitofusin 1

Isotype

Rabbit IgG

Storage Buffer

Supplied in PBS (pH 7.4) containing 50% glycerol, and 0.02% sodium azide.

Storage

Store at -20 °C for one year.

Recommended Dilutions

Western Blotting (WB): 1:1,000-1:5,000

Flow Cytometry (FCM): 1:2,000

Immunocytochemistry (IC): 1:100-1:1,000

Note: This product is for research use only.

SUPPORT

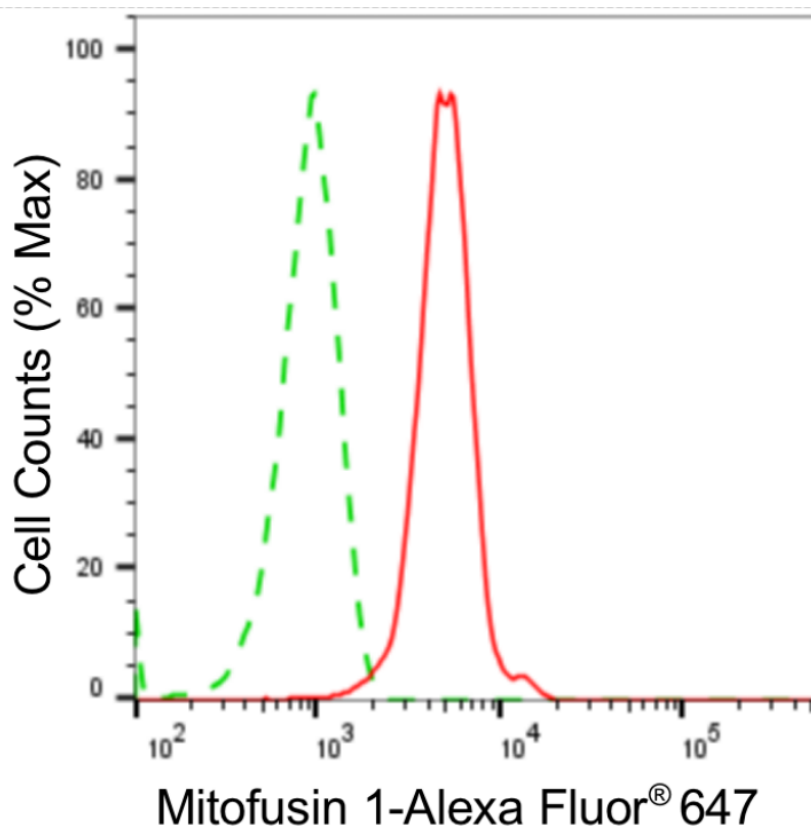
SUPPORT@GENUINBIOTECH.COM
TEL: +1-540-855-7041

ORDERS

SALES@GENUINBIOTECH.COM
FAX: +1-540-855-7041

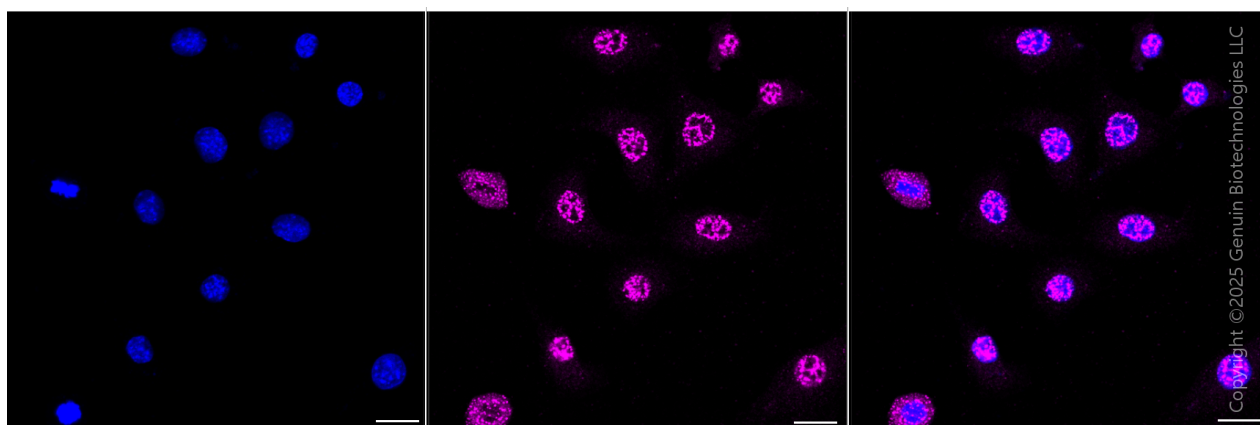
WWW.GENUINBIOTECH.COM

Validation Data



Copyright ©2024 Genuin Biotechnologies LLC

Flow cytometric analysis of Mitofusin 1 expression in C2C12 cells using anti-Mitofusin 1 antibody (Cat#63303, 1:2,000). Green, isotype control; red, Mitofusin 1.



Immunocytochemical staining of C2C12 cells with anti-Mitofusin 1 antibody (Cat#63303, 1:1,000) . Nuclei were stained blue with DAPI; Mitofusin 1 was stained magenta with Alexa Fluor® 647. Images were taken using Leica stellaris 5. Protein abundance based on laser Intensity and Smart Gain: Medium. Scale bar, 20 μ m.

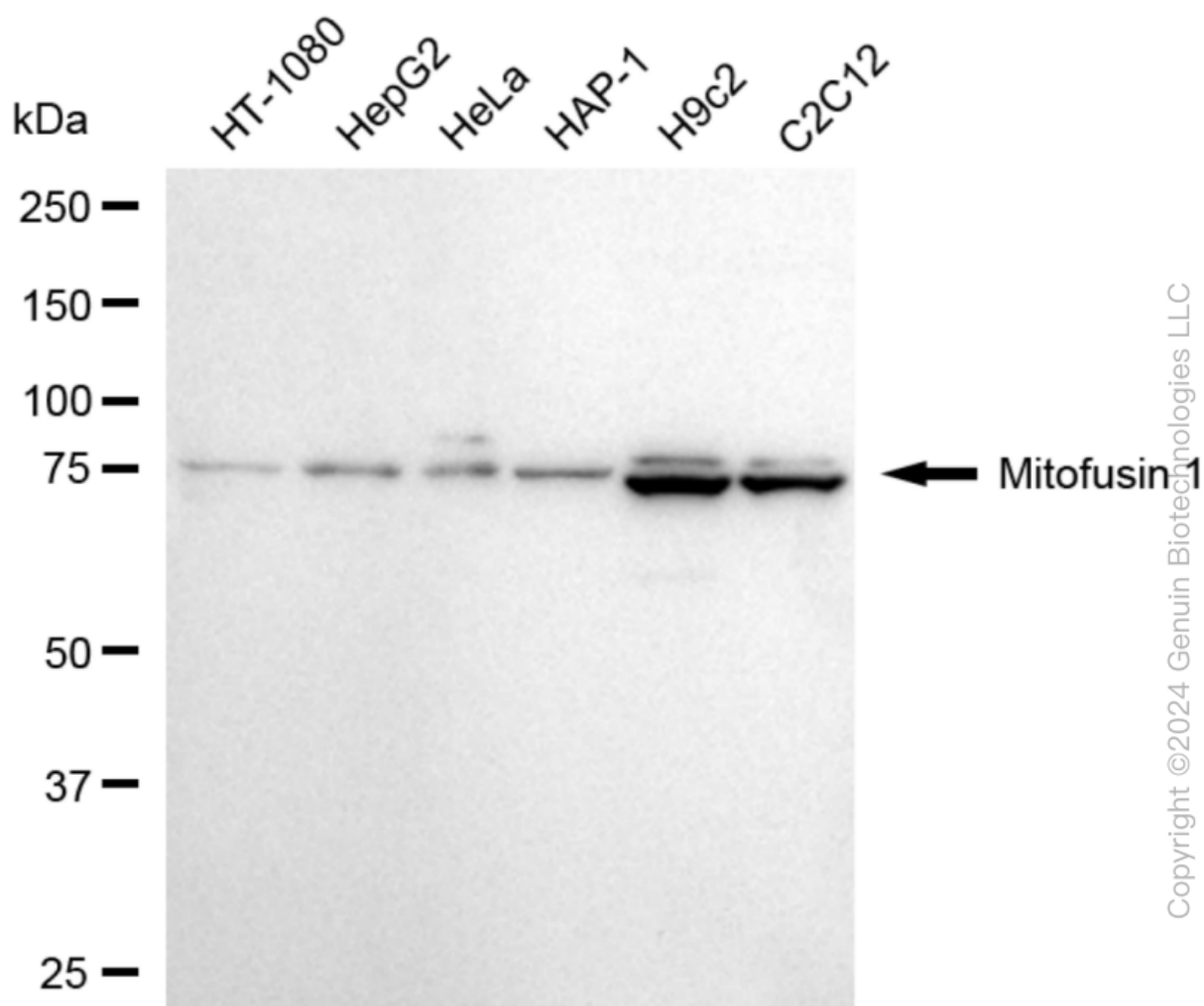
SUPPORT

SUPPORT@GENUINBIOTECH.COM
TEL: +1-540-855-7041

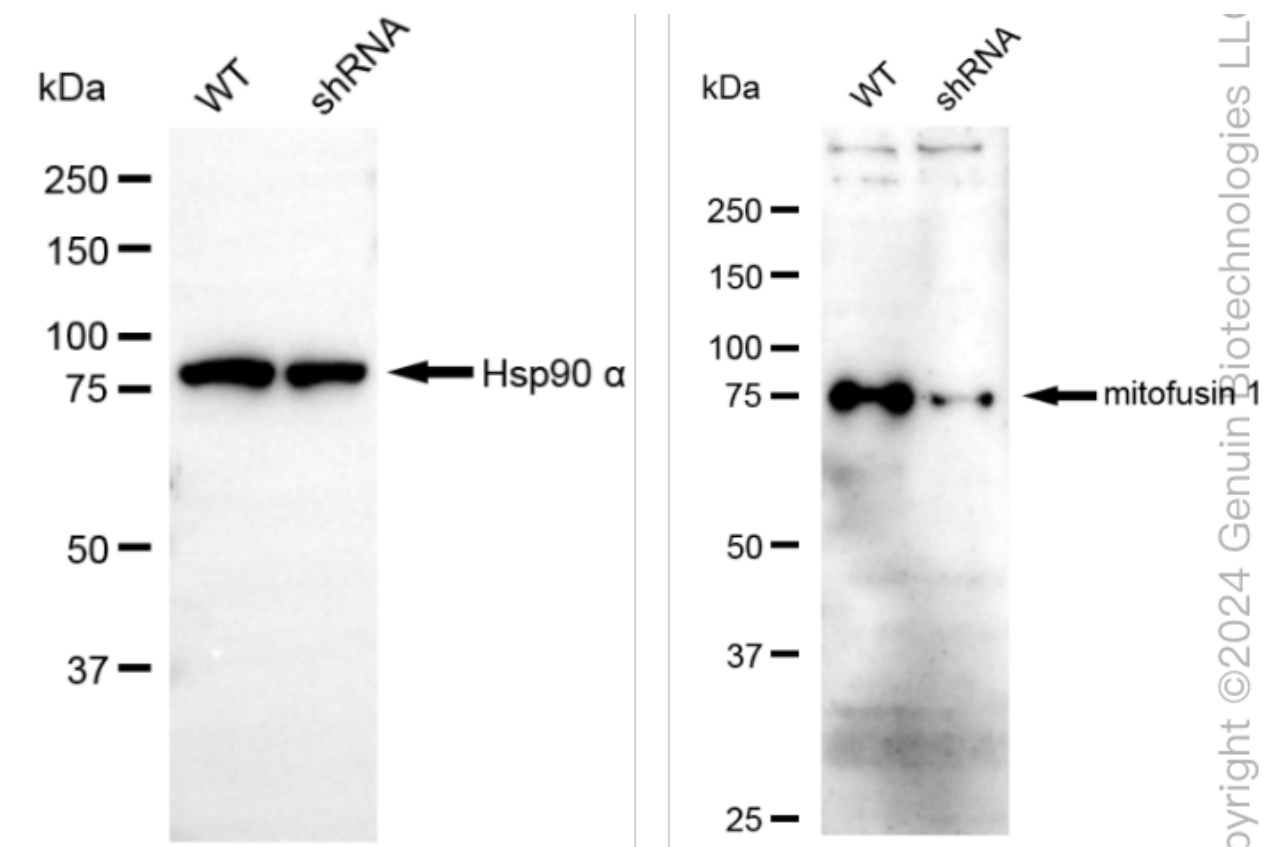
ORDERS

SALES@GENUINBIOTECH.COM
FAX: +1-540-855-7041

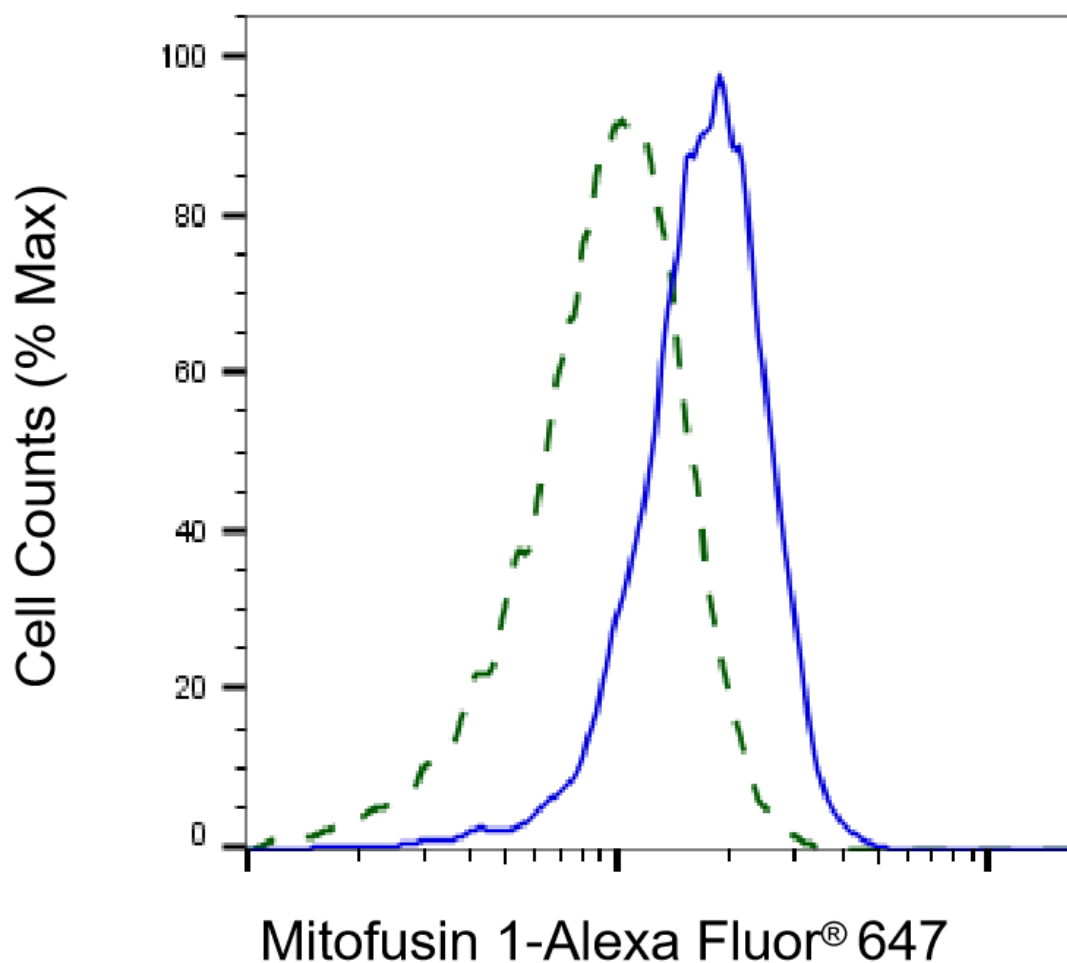
WWW.GENUINBIOTECH.COM



Western blotting analysis using anti-mitofusin 1 antibody (Cat#63303). Total cell lysates (30 µg) from various cell lines were loaded and separated by SDS-PAGE. The blot was incubated with anti-mitofusin 1 antibody (Cat#63303, 1:5,000) and HRP-conjugated goat anti-rabbit secondary antibody (Cat#201, 1:20,000) respectively. Image was developed using NaQ™ ECL Substrate Kit (Cat#716).



Western blotting analysis using anti-mitofusin 1 antibody (Cat#63303). Mitofusin 1 expression in wild-type (WT) and mitofusin 1 (MFN1) shRNA knockdown (KD) HeLa cells with 20 µg of total cell lysates. β -Tubulin serves as a loading control. The blot was incubated with anti-mitofusin 1 antibody (Cat#63303, 1:5,000) and HRP-conjugated goat anti-rabbit secondary antibody (Cat#201, 1:20,000) respectively. Image was developed using FeQ™ ECL Substrate Kit (Cat#226).



Copyright ©2025 Genuin Biotechnologies LLC

Validation of Mitofusin 1 knockdown using flow cytometry. Wild-type(WT, Blue) and knockdown(KD, Green) HeLa cells were stained with anti-Mitofusin 1 antibody (Cat#63303, 1:2,000) and analyzed using BD flow cytometer.