

# KD-Validated Anti-Phospho-NDRG1 (Ser330) Rabbit Monoclonal Antibody



**Catalog #: 63306**

## Aliases

NDRG1; N-Myc Downstream Regulated 1; DRG1; RTP; CAP43; TDD5; NDR1; Reducing Agents And Tunicamycin-Responsive Protein; N-Myc Downstream-Regulated Gene 1 Protein; Nickel-Specific Induction Protein Cap43; Differentiation-Related Gene 1 Protein; Protein NDRG1; DRG-1; Protein Regulated By Oxygen-1; PROXY1; CMT4D; HMSNL; RIT42; TARG1; Rit42; NMSL; GC4

## Background

Gene Name: NDRG1

NCBI Gene Entry: [10397](#)

UniProt Entry: [Q92597](#)

## Application Information

Molecular Weight: Predicted, 43 kDa, observed, 43 kDa

Clonality: Rabbit monoclonal antibody

Clone ID: 24GB4985

Species Reactivity: Human, mouse

Applications Tested: Western blotting (WB), flow cytometry (FCM), immunocytochemistry (IC)

## Immunogen

A synthesized peptide derived from human Phospho-NDRG1 (Ser330)

## Isotype

Rabbit IgG

## Storage Buffer

Supplied in PBS (pH 7.4) containing 50% glycerol, and 0.02% sodium azide.

## Storage

Store at -20 °C for one year.

## Recommended Dilutions

Western Blotting (WB): 1:1,000-1:5,000

Flow Cytometry (FCM): 1:2,000

Immunocytochemistry (IC): 1:100-1:1,000

---

### SUPPORT

SUPPORT@GENUINBIOTECH.COM  
TEL: +1-540-855-7041

### ORDERS

SALES@GENUINBIOTECH.COM  
FAX: +1-540-855-7041

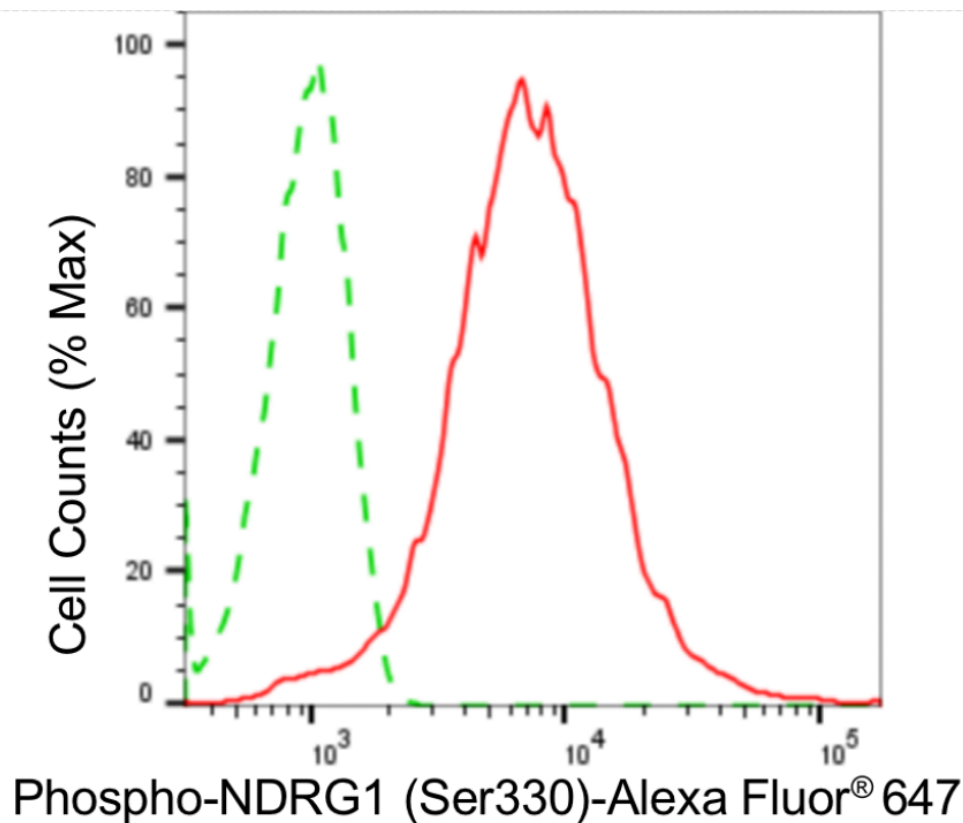
[WWW.GENUINBIOTECH.COM](http://WWW.GENUINBIOTECH.COM)

## KD-Validated Anti-Phospho-NDRG1 (Ser330) Rabbit Monoclonal Antibody

PAGE 2

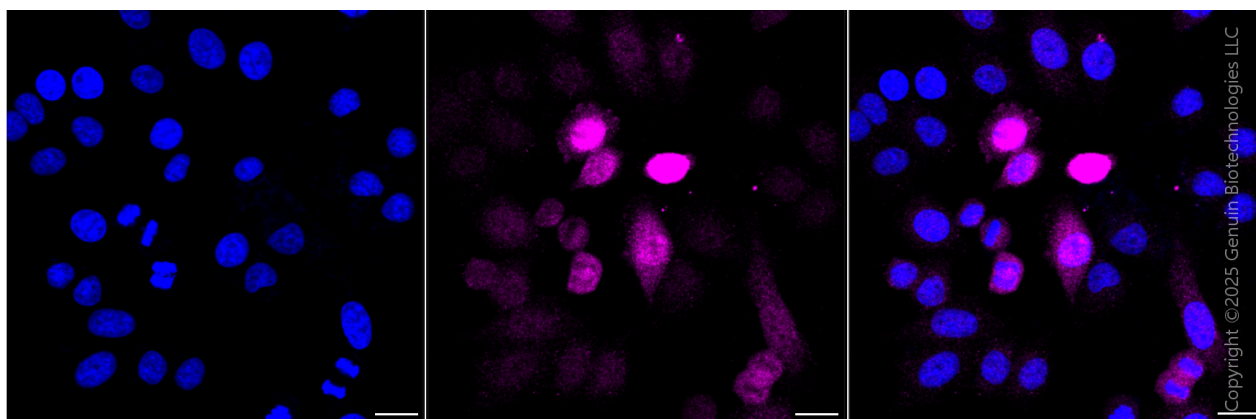
**Note:** This product is for research use only.

### Validation Data



Copyright ©2024 Genuin Biotechnologies LLC

Flow cytometric analysis of phospho-NDRG1 (Ser330) expression in HepG2 cells using anti-phospho-NDRG1 (Ser330) antibody (Cat#63306, 1:2,000). Green, isotype control; red, phospho-NDRG1 (Ser330).



Immunocytochemical staining of HepG2 cells with anti-Phospho-NDRG1 (Ser330) antibody (Cat#63306, 1:1,000). Nuclei were stained blue with DAPI; Phospho-NDRG1 (Ser330) was stained magenta with Alexa Fluor® 647. Images were taken using Leica stellaris 5. Protein

#### SUPPORT

SUPPORT@GENUINBIOTECH.COM  
TEL: +1-540-855-7041

#### ORDERS

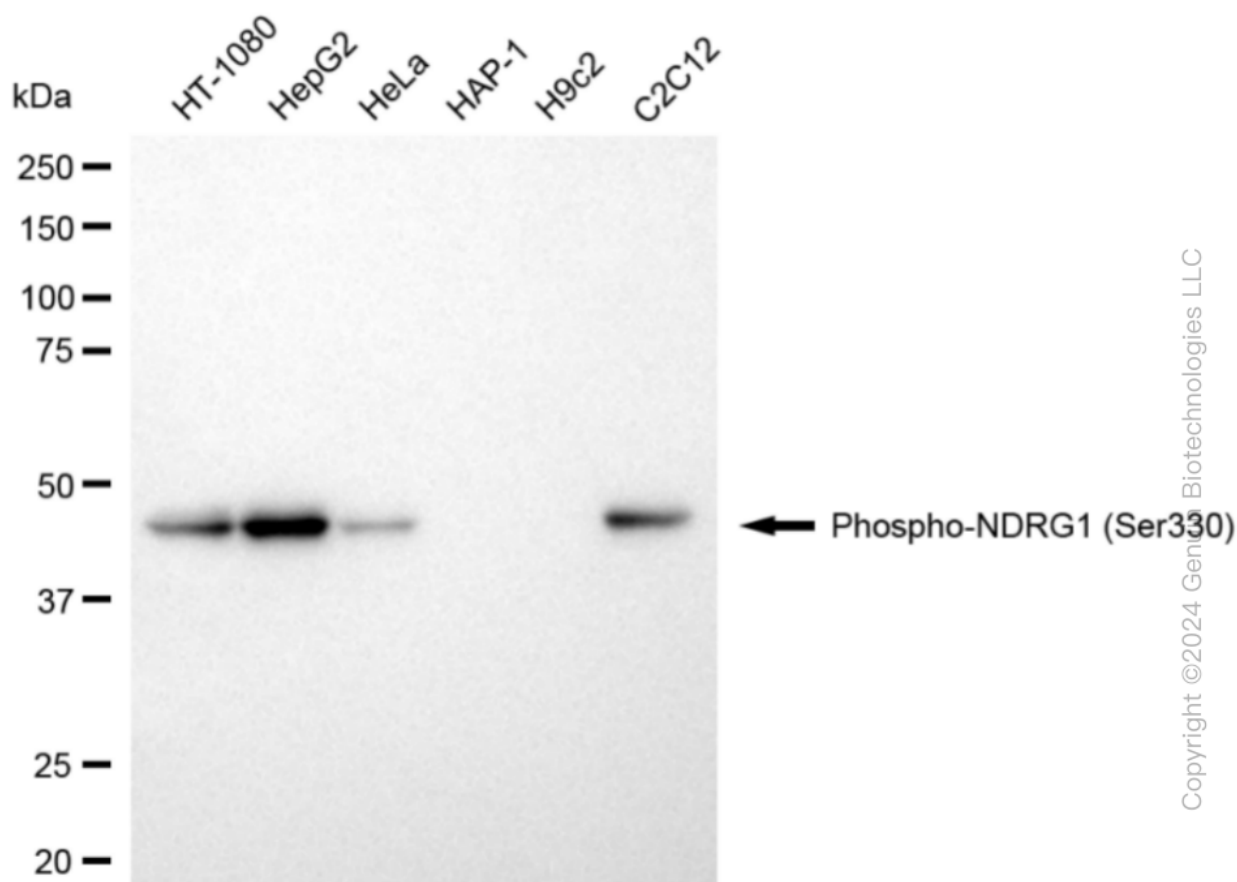
SALES@GENUINBIOTECH.COM  
FAX: +1-540-855-7041

[WWW.GENUINBIOTECH.COM](http://WWW.GENUINBIOTECH.COM)

## KD-Validated Anti-Phospho-NDRG1 (Ser330) Rabbit Monoclonal Antibody

PAGE 3

abundance based on laser Intensity and smart gain: Medium. Scale bar, 20  $\mu$ m.



Western blotting analysis using anti-phospho-NDRG1 (Ser330) antibody (Cat#63306). Total cell lysates (30  $\mu$ g) from various cell lines were loaded and separated by SDS-PAGE. The blot was incubated with anti-phospho-NDRG1 (Ser330) antibody (Cat#63306, 1:5,000) and HRP-conjugated goat anti-rabbit secondary antibody (Cat#201, 1:20,000) respectively. Image was developed using NaQ™ ECL Substrate Kit (Cat#716).

### SUPPORT

SUPPORT@GENUINBIOTECH.COM  
TEL: +1-540-855-7041

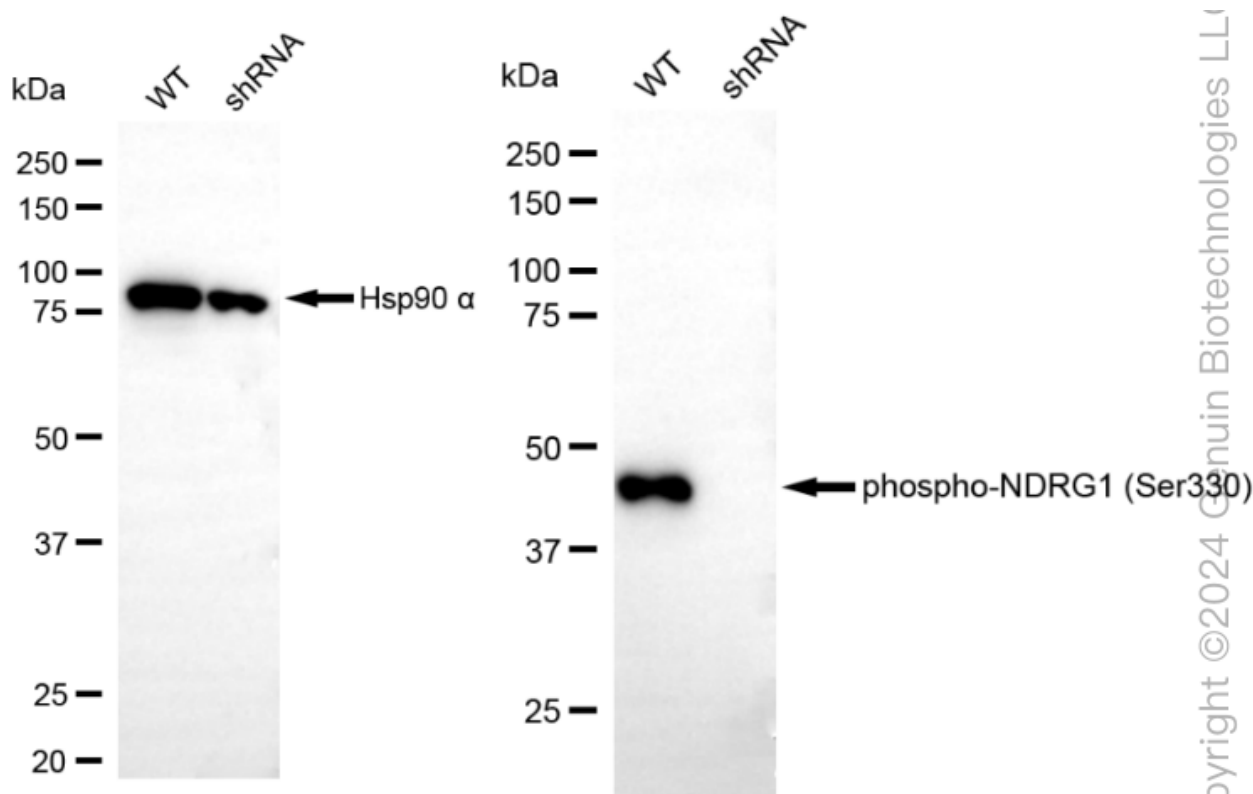
### ORDERS

SALES@GENUINBIOTECH.COM  
FAX: +1-540-855-7041

WWW.GENUINBIOTECH.COM

## KD-Validated Anti-Phospho-NDRG1 (Ser330) Rabbit Monoclonal Antibody

PAGE 4



Western blotting analysis using anti-phospho-NDRG1 (Ser330) antibody (Cat#63306). Phospho-NDRG1 (Ser330) expression in wild-type (WT) and NDRG1 shRNA knockdown (KD) HeLa cells with 20 µg of total cell lysates. Hsp90 α serves as a loading control. The blot was incubated with anti-phospho-NDRG1 (Ser330) antibody (Cat#63306, 1:5,000) and HRP-conjugated goat anti-rabbit secondary antibody (Cat#201, 1:20,000) respectively. Image was developed using NaQ™ ECL Substrate Kit (Cat#716). NDRG1, N-myc downstream regulated 1.

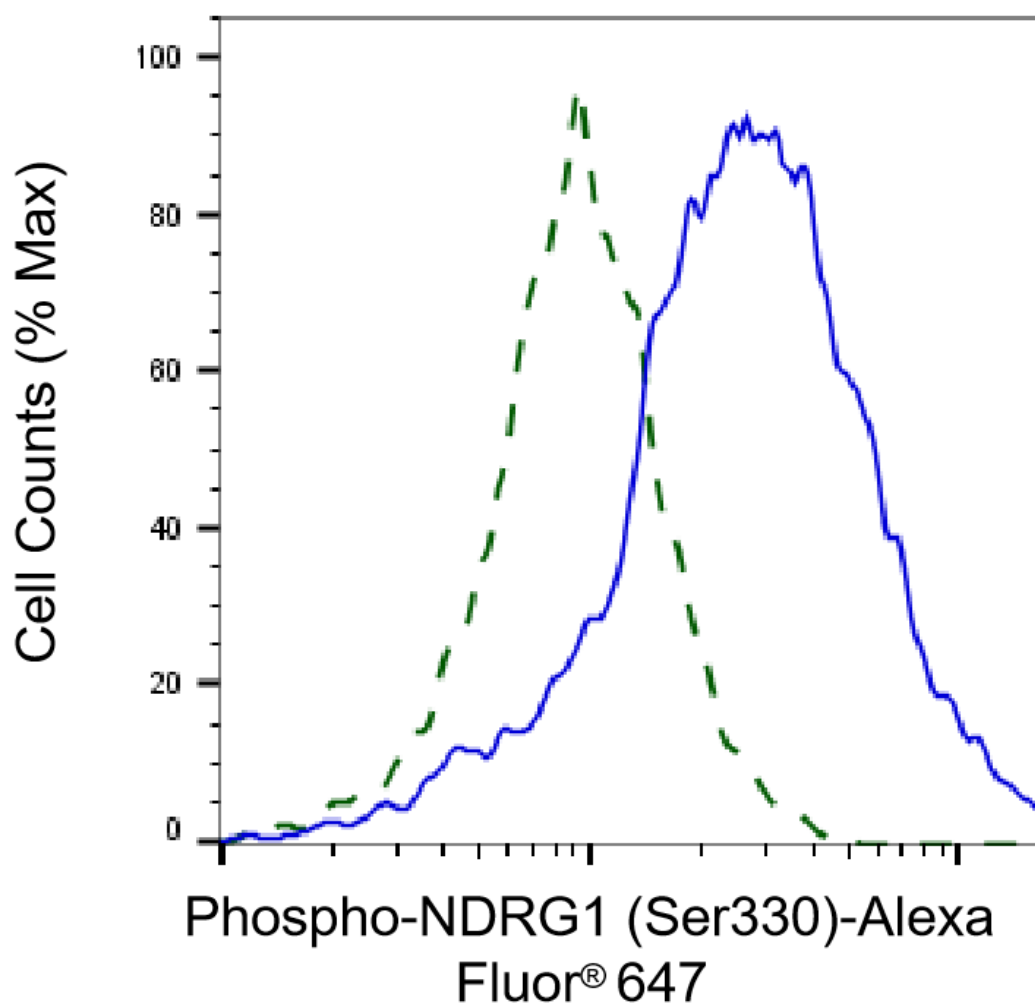
### SUPPORT

SUPPORT@GENUINBIOTECH.COM  
TEL: +1-540-855-7041

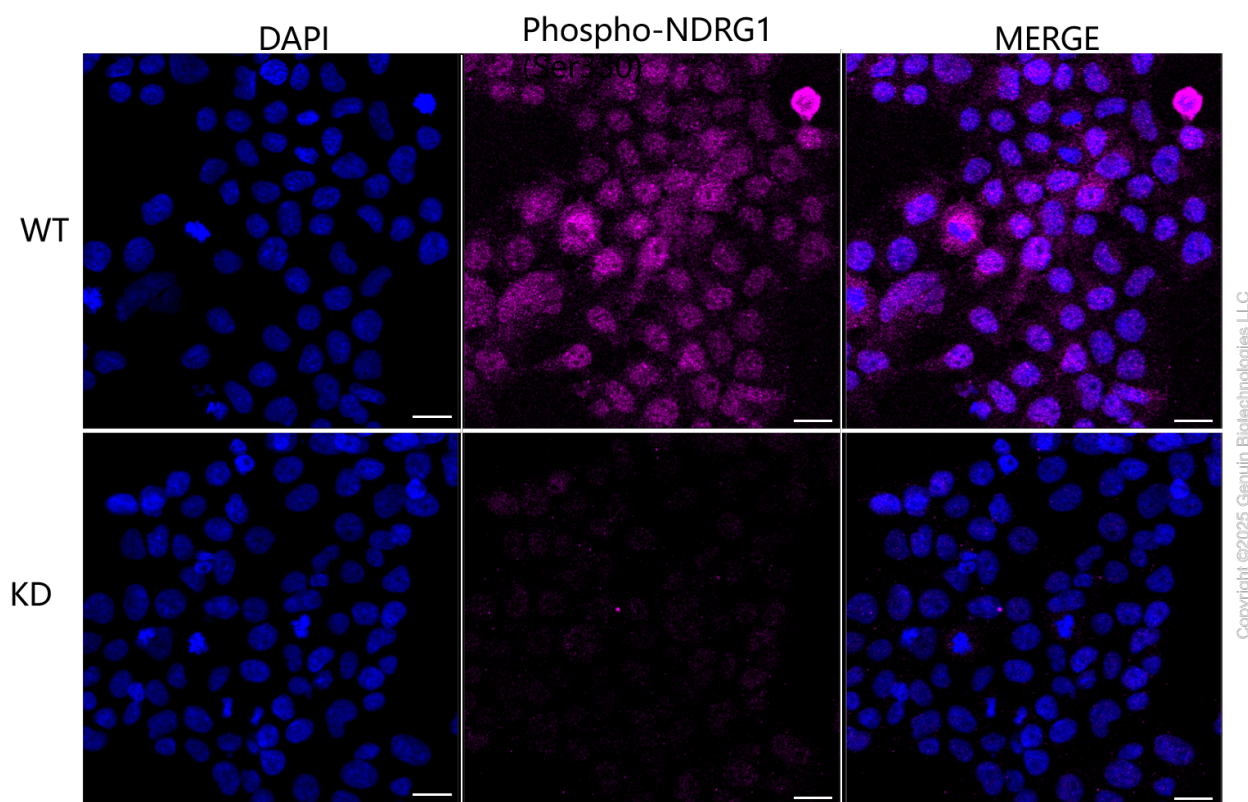
### ORDERS

SALES@GENUINBIOTECH.COM  
FAX: +1-540-855-7041

WWW.GENUINBIOTECH.COM



Validation of NDRG1 knockdown using flow cytometry. Wild-type(WT, Blue) and knockdown(KD, Green) HeLa cells were stained with anti-Phospho-NDRG1 (Ser330) antibody (Cat#63306, 1:2,000) and analyzed using BD flow cytometer.



Immunocytochemical staining of HeLa cells using anti-Phospho-NDRG1 (Ser330) antibody (Cat#63306, 1:1,000), Top panel: wild-type (WT); Bottom panel: Phospho-NDRG1 (Ser330) shRNA knockdown (KD). Nuclei were stained blue with DAPI; Phospho-NDRG1 (Ser330) was stained magenta with Alexa Fluor® 647. Scale bar, 20  $\mu$ m.