

**Catalog #: 63313**

## Aliases

PCYT1A; Phosphate Cytidylyltransferase 1A, Choline;  
CTPCT; CCTalpha; PCYT1; CT; Phosphate Cytidylyltransferase 1, Choline, Alpha;  
CTP:Phosphocholine Cytidylyltransferase-Alpha; Choline-Phosphate Cytidylyltransferase Alpha;  
CTP:Phosphocholine Cytidylyltransferase A; Choline-Phosphate Cytidylyltransferase A;  
Phosphorylcholine Transferase Alpha;  
Phosphorylcholine Transferase A; EC 2.7.7.15 4; CCT-Alpha; CCT A; CT A;  
Phosphate Cytidylyltransferase 1, Choline, Alpha Isoform; EC 2.7.7; SMDCRD; CCTA;  
CGL5;CTA

## Background

Gene Name: PCYT1A  
NCBI Gene Entry: [5130](#)  
UniProt Entry: [P49585](#)

## Application Information

Molecular Weight: Predicted, 42 kDa, observed, 42 kDa  
Clonality: Rabbit monoclonal antibody  
Clone ID: 24GB5015  
Species Reactivity: Human, mouse  
Applications Tested: Western blotting (WB), flow cytometry (FCM), immunocytochemistry (IC),  
Immunohistochemistry (IHC)

## Immunogen

A synthesized peptide derived from human CT A

## Isotype

Rabbit IgG

## Storage Buffer

Supplied in PBS (pH 7.4) containing 50% glycerol, and 0.02% sodium azide.

## Storage

Store at -20 °C for one year.

## Recommended Dilutions

---

### SUPPORT

SUPPORT@GENUINBIOTECH.COM  
TEL: +1-540-855-7041

### ORDERS

SALES@GENUINBIOTECH.COM  
FAX: +1-540-855-7041

[WWW.GENUINBIOTECH.COM](http://WWW.GENUINBIOTECH.COM)

## KD-Validated Anti-PCYT1A Rabbit Monoclonal Antibody

PAGE 2

Western Blotting (WB): 1:1,000-1:5,000

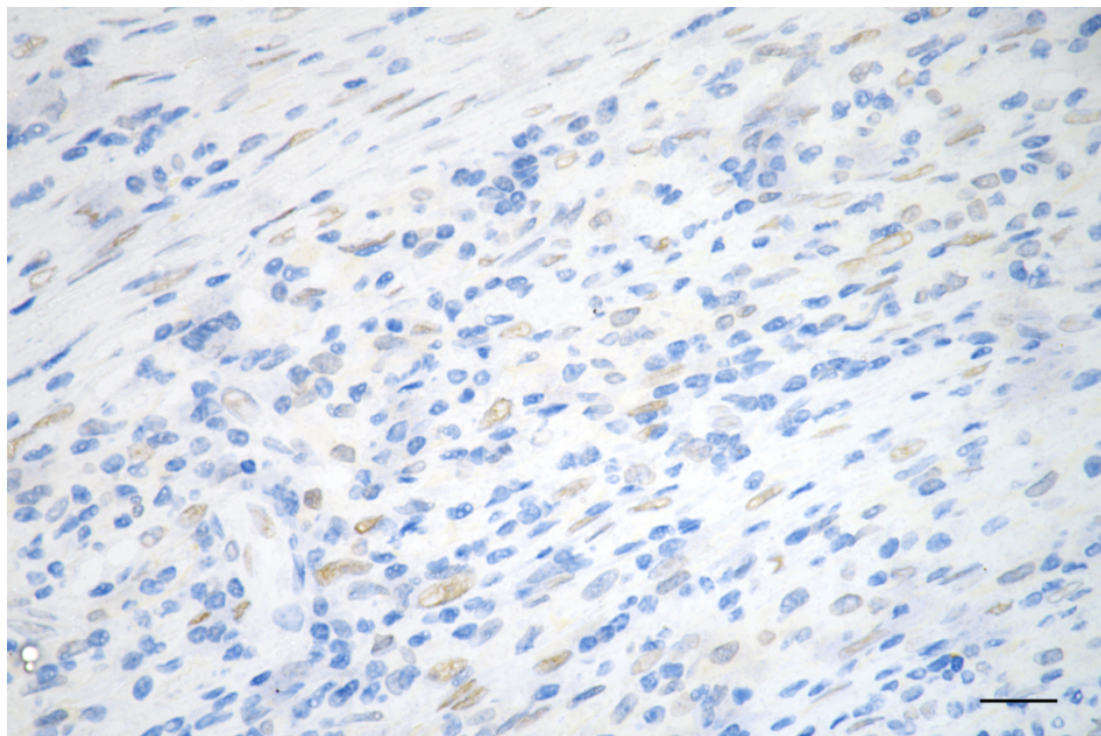
Flow Cytometry (FCM): 1:2,000

Immunocytochemistry (IC): 1:100-1:1,000

Immunohistochemistry (IHC): 1:100-1:200

**Note:** This product is for research use only.

### Validation Data



Copyright ©2025 Genuin Biotechnologies LLC

Immunohistochemistry was performed on paraffin-embedded human sigmoid colon carcinoma using anti-PCYT1A antibody (Cat#63313, 1:200). Antigen retrieval was done in sodium citrate buffer (pH 6.0). DAB was used for detection, with hematoxylin counterstaining. Images were acquired using a Nikon Ci-L Plus microscope (40× objective). Scale bar: 25 µm.

---

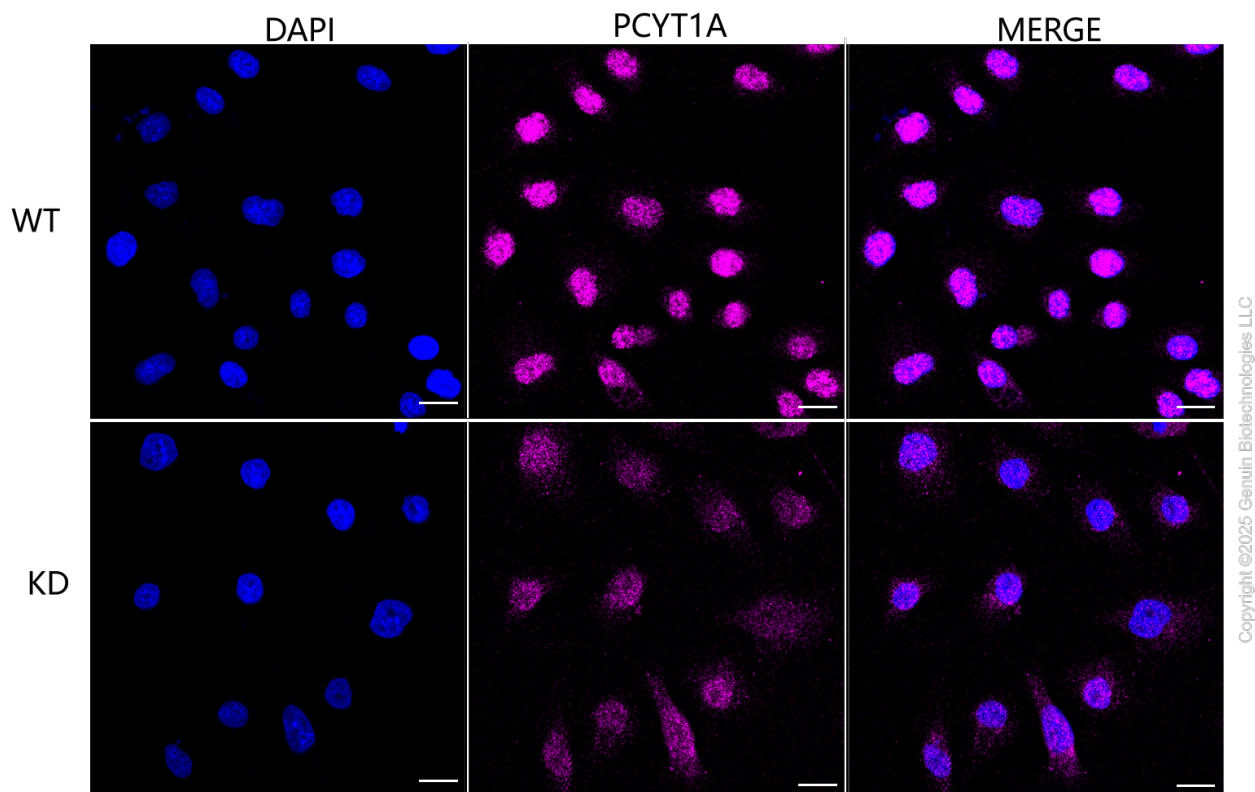
#### SUPPORT

SUPPORT@GENUINBIOTECH.COM  
TEL: +1-540-855-7041

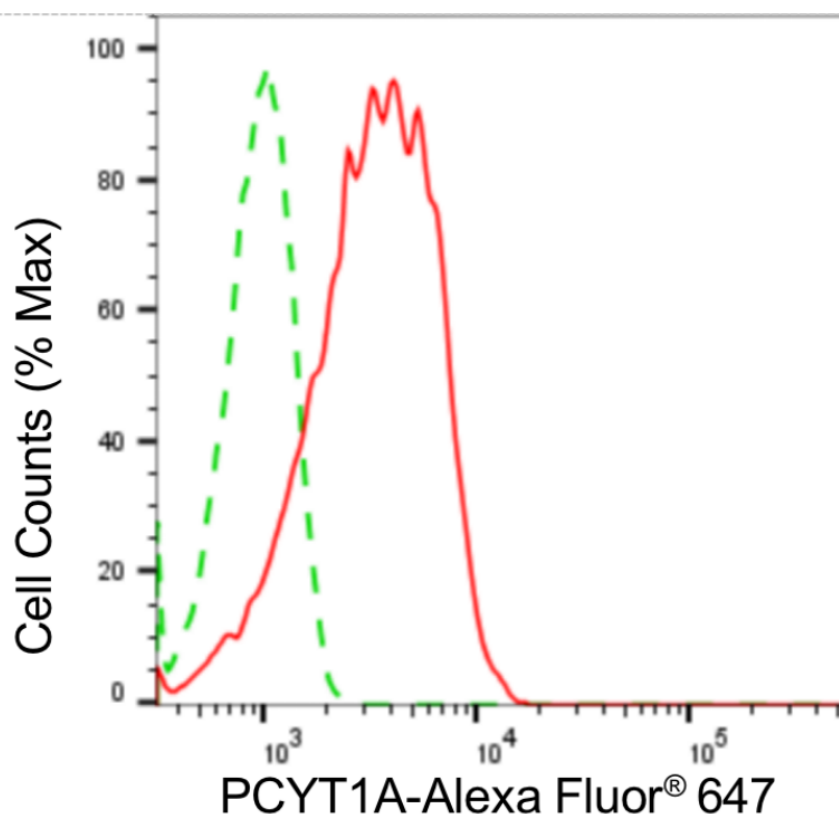
#### ORDERS

SALES@GENUINBIOTECH.COM  
FAX: +1-540-855-7041

[WWW.GENUINBIOTECH.COM](http://WWW.GENUINBIOTECH.COM)

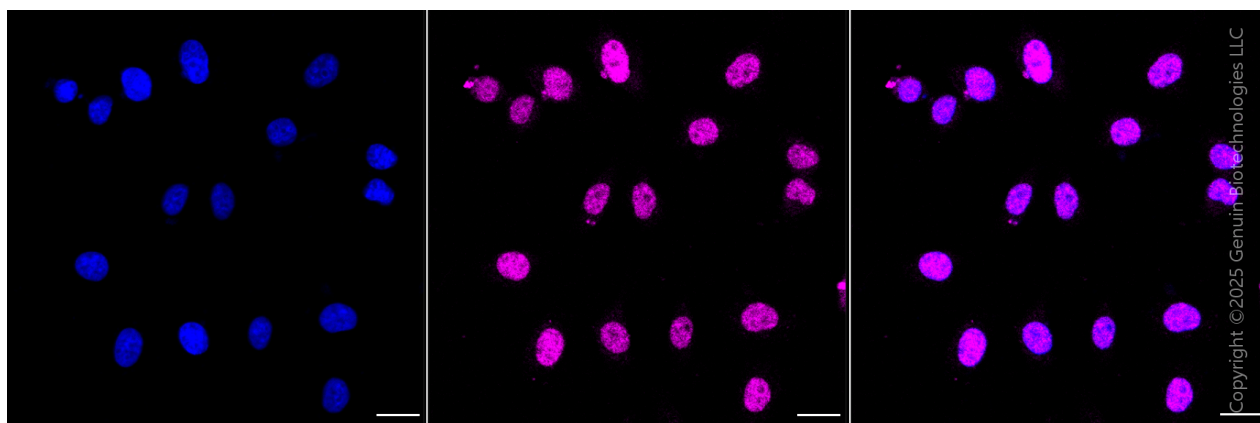


Immunocytochemical staining of HeLa cells using anti-PCYT1A antibody (Cat#63313, 1:1,000), Top panel: wild-type (WT); Bottom panel: PCYT1A shRNA knockdown (KD). Nuclei were stained blue with DAPI; PCYT1A was stained magenta with Alexa Fluor® 647. Scale bar, 20  $\mu$ m. Permeabilization: Triton.

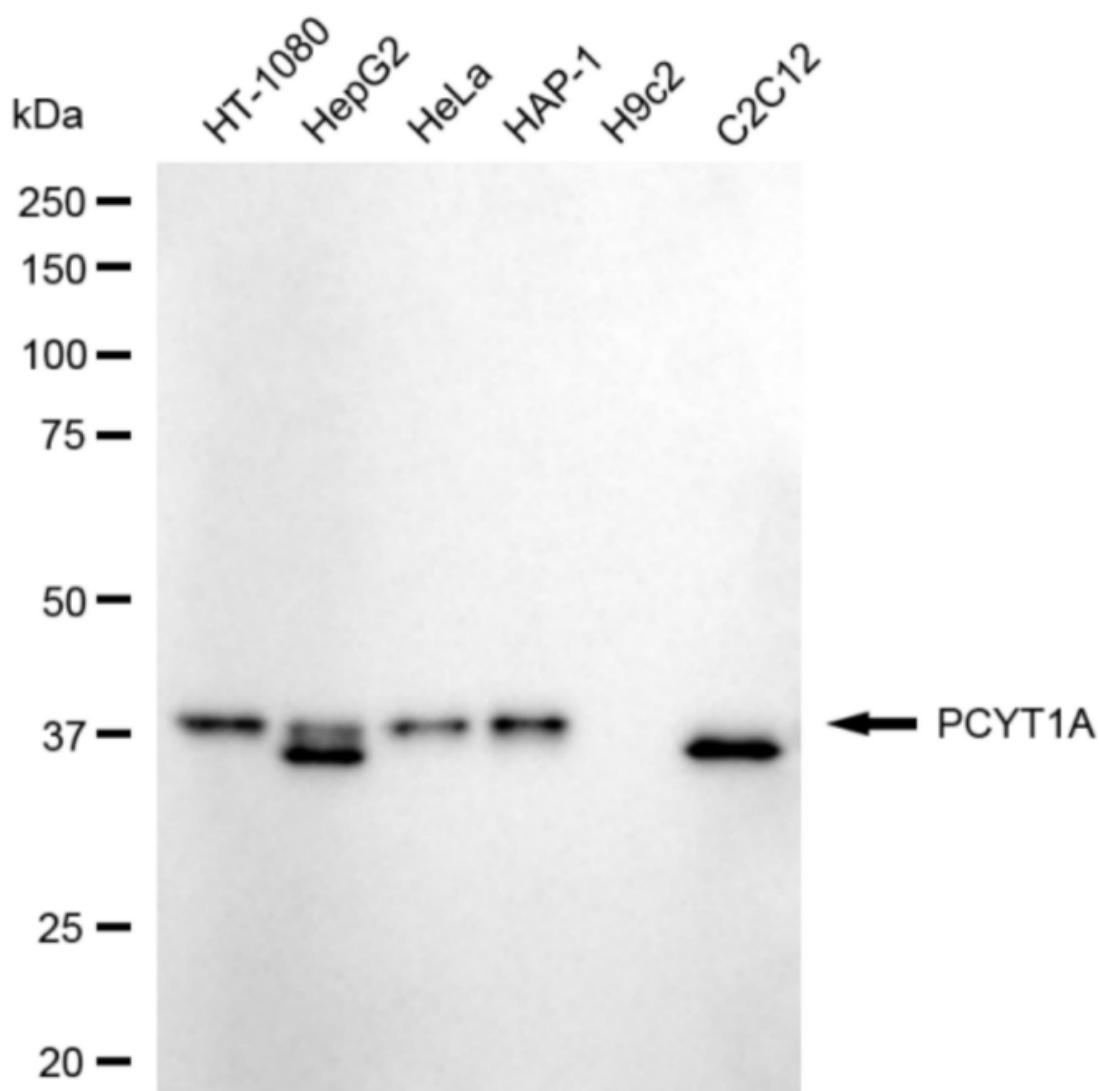


Copyright ©2024 Genuin Biotechnologies LLC

Flow cytometric analysis of PCYT1A expression in HepG2 cells using anti-PCYT1A antibody (Cat#63313, 1:2,000). Green, isotype control; red, PCYT1A.

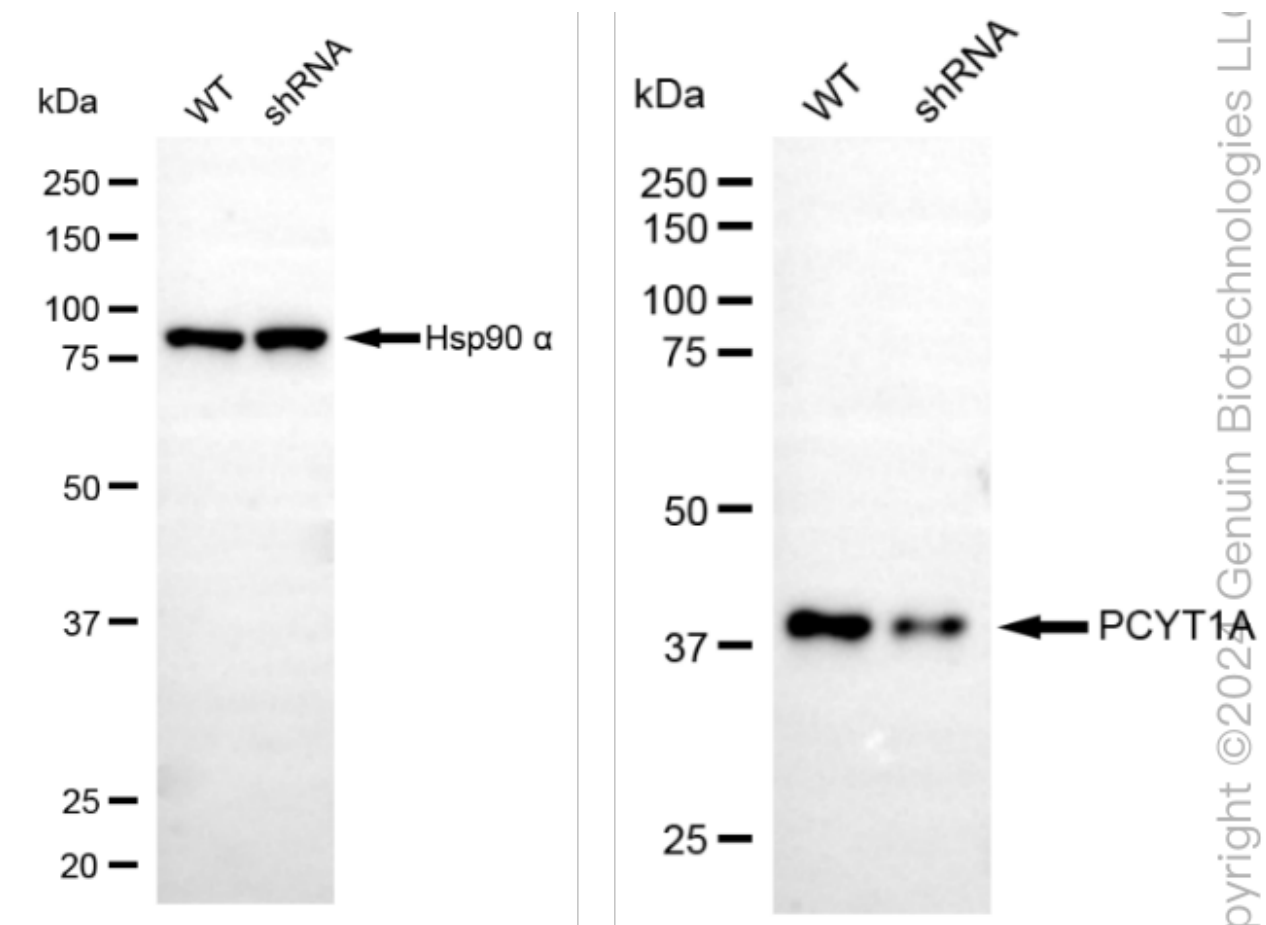


Immunocytochemical staining of HepG2 cells with anti-PCYT1A antibody (Cat#63313, 1:1,000). Nuclei were stained blue with DAPI; PCYT1A was stained magenta with Alexa Fluor® 647. Images were taken using Leica stellaris 5. Protein abundance based on laser Intensity and smart gain: Low. Scale bar, 20 µm.

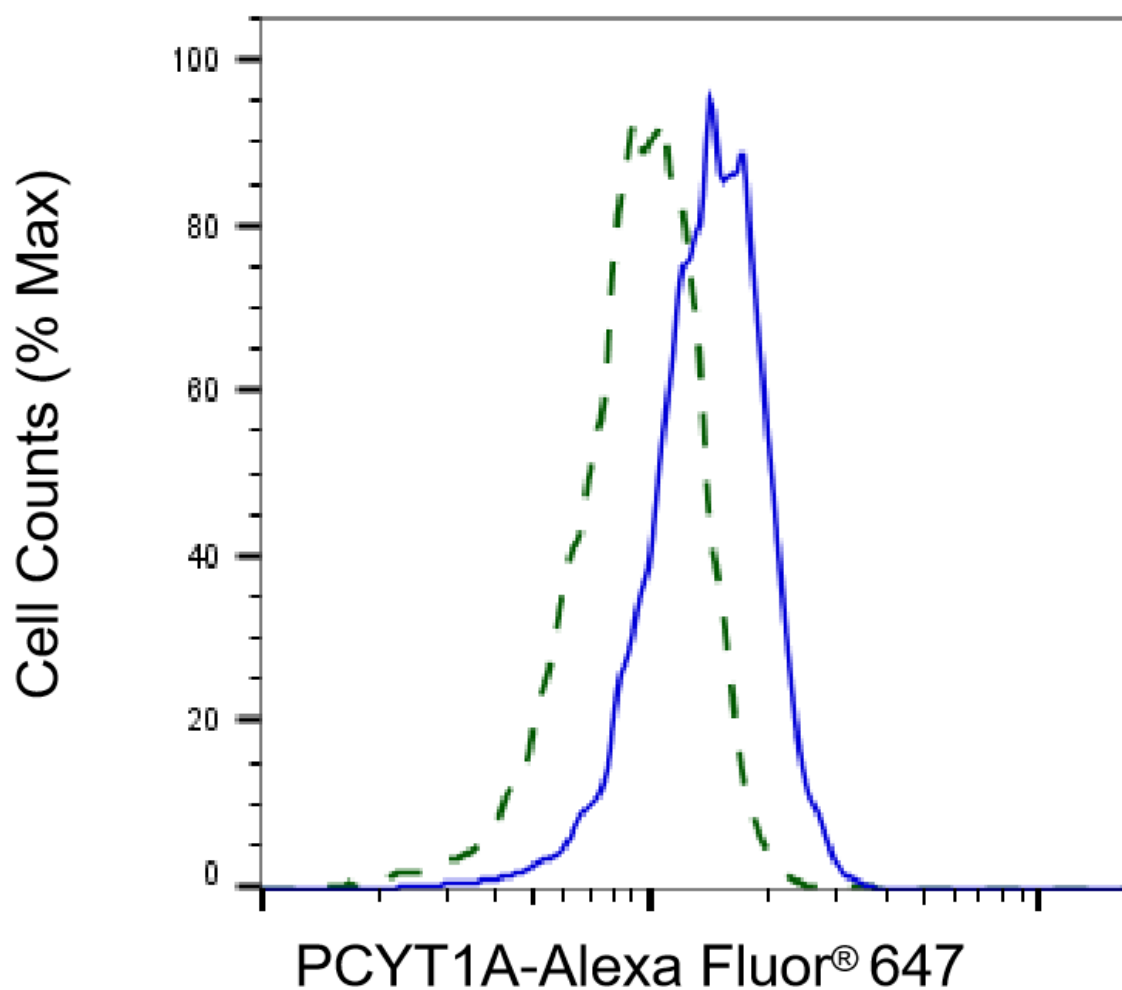


Copyright ©2024 Genuin Biotechnologies LLC

Western blotting analysis using anti-PCYT1A antibody (Cat#63313). Total cell lysates (30 µg) from various cell lines were loaded and separated by SDS-PAGE. The blot was incubated with anti-PCYT1A antibody (Cat#63313, 1:5,000) and HRP-conjugated goat anti-rabbit secondary antibody (Cat#201, 1:20,000) respectively. Image was developed using FeQ™ ECL Substrate Kit (Cat#226).



Western blotting analysis using anti-PCYT1A antibody (Cat#63313). PCYT1A expression in wild-type (WT) and PCYT1A shRNA knockdown (KD) HeLa cells with 20 µg of total cell lysates. Hsp90 α serves as a loading control. The blot was incubated with anti-PCYT1A antibody (Cat#63313, 1:5,000) and HRP-conjugated goat anti-rabbit secondary antibody (Cat#201, 1:20,000) respectively. Image was developed using NaQ™ ECL Substrate Kit (Cat#716).



Copyright ©2025 Genuin Biotechnologies LLC

Validation of PCYT1A knockdown using flow cytometry. Wild-type(WT, Blue) and knockdown(KD, Green) HeLa cells were stained with anti-PCYT1A antibody (Cat#63313, 1:2,000) and analyzed using BD flow cytometer.