

# KD-Validated Anti-PRMT1 Rabbit Monoclonal Antibody



**Catalog #: 63320**

## Aliases

PRMT1; Protein Arginine Methyltransferase 1; HRMT1L2; HCP1; ANM1; HMT1 (HnRNP Methyltransferase, *S. Cerevisiae*)-Like 2; Histone-Arginine N-Methyltransferase PRMT1; Protein Arginine N-Methyltransferase 1; Interferon Receptor 1-Bound Protein 4; Highly Conserved Protein 1; IR1B4; Heterogeneous Nuclear Ribonucleoprotein Methyltransferase 1-Like 2; HMT1 HnRNP Methyltransferase-Like 2 (*S. Cerevisiae*); EC 2.1.1.319; EC 2.1.1.77; EC 2.1.1; HMT2

## Background

Gene Name: PRMT1

NCBI Gene Entry: [3276](#)

UniProt Entry: [Q99873](#)

## Application Information

Molecular Weight: Predicted, 42 kDa, observed, 42 kDa

Clonality: Rabbit monoclonal antibody

Clone ID: 24GB5045

Species Reactivity: Human, mouse, rat

Applications Tested: Western blotting (WB), flow cytometry (FCM)

## Immunogen

A synthesized peptide derived from human PRMT1

## Isotype

Rabbit IgG

## Storage Buffer

Supplied in PBS (pH 7.4) containing 50% glycerol, and 0.02% sodium azide.

## Storage

Store at -20 °C for one year.

## Recommended Dilutions

Western Blotting (WB): 1:1,000-1:5,000

Flow Cytometry (FCM): 1:2,000

---

### SUPPORT

SUPPORT@GENUINBIOTECH.COM  
TEL: +1-540-855-7041

### ORDERS

SALES@GENUINBIOTECH.COM  
FAX: +1-540-855-7041

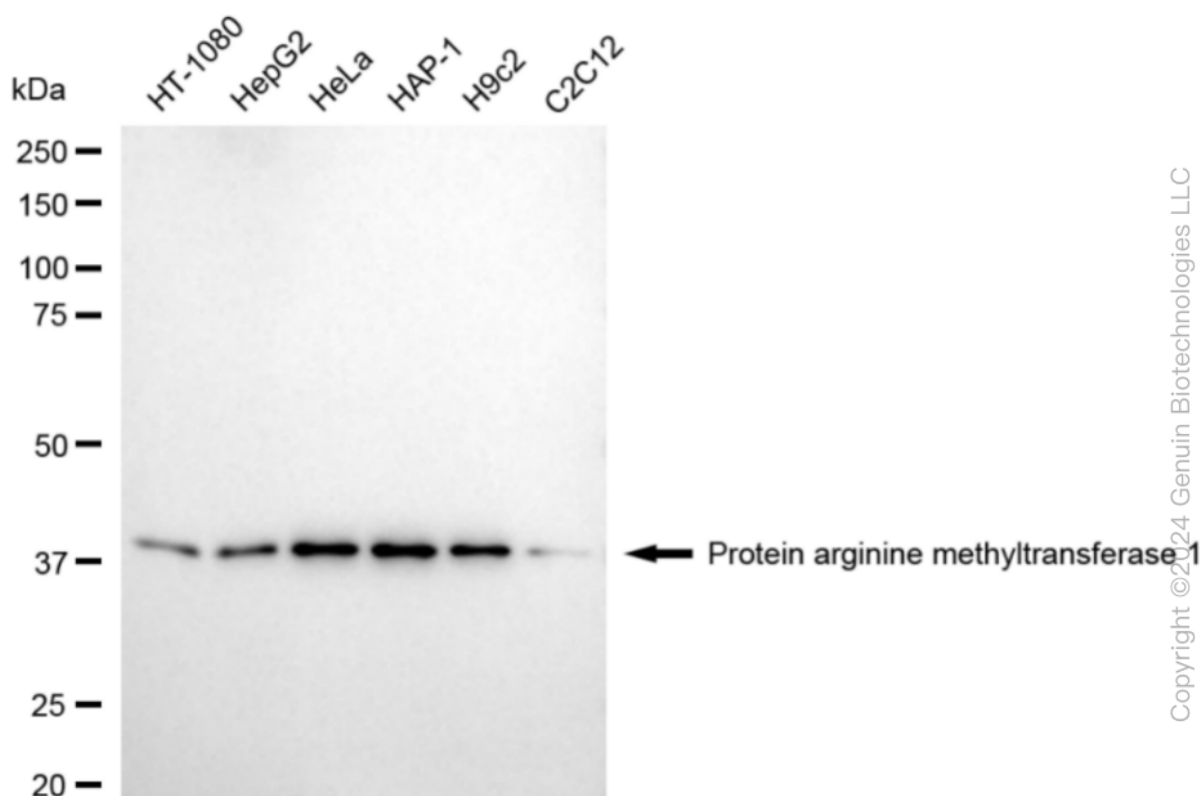
[WWW.GENUINBIOTECH.COM](http://WWW.GENUINBIOTECH.COM)

## KD-Validated Anti-PRMT1 Rabbit Monoclonal Antibody

PAGE 2

**Note:** This product is for research use only.

### Validation Data



Western blotting analysis using anti-protein arginine methyltransferase 1 antibody (Cat#63320). Total cell lysates (30 µg) from various cell lines were loaded and separated by SDS-PAGE. The blot was incubated with anti-protein arginine methyltransferase 1 antibody (Cat#63320, 1:5,000) and HRP-conjugated goat anti-rabbit secondary antibody (Cat#201, 1:20,000) respectively. Image was developed using FeQ™ ECL Substrate Kit (Cat#226).

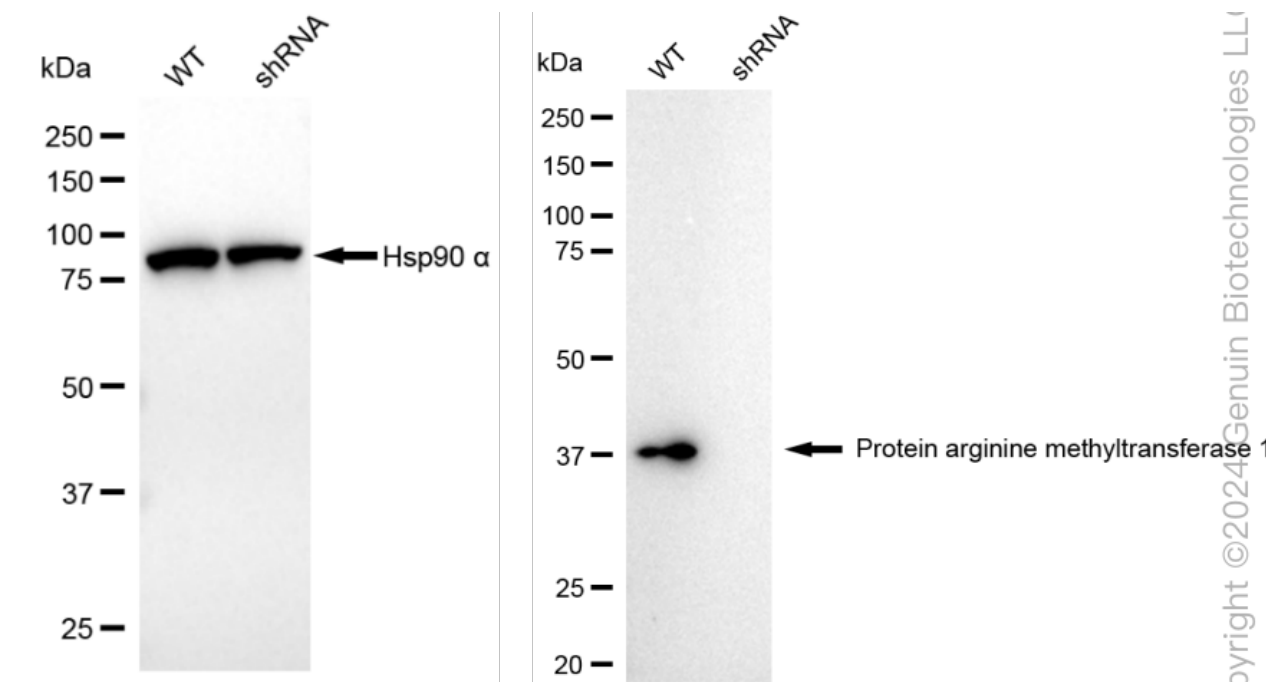
#### SUPPORT

SUPPORT@GENUINBIOTECH.COM  
TEL: +1-540-855-7041

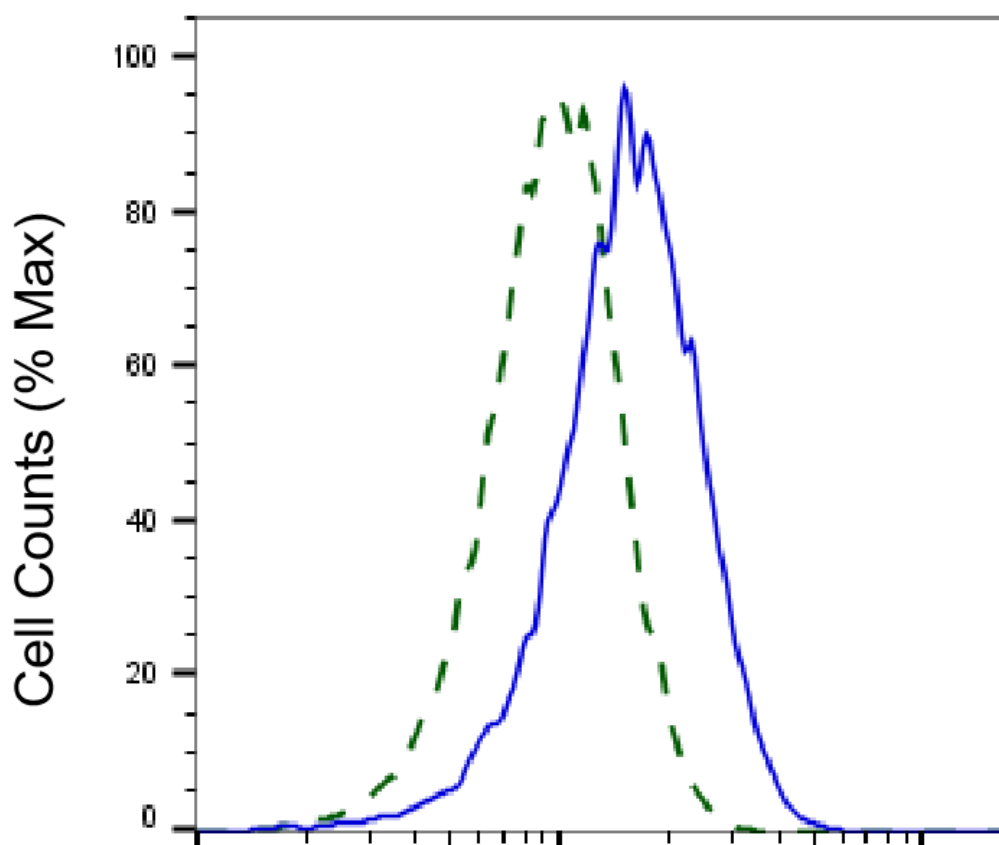
#### ORDERS

SALES@GENUINBIOTECH.COM  
FAX: +1-540-855-7041

WWW.GENUINBIOTECH.COM



Western blotting analysis using anti-protein arginine methyltransferase 1 antibody (Cat#63320). Protein arginine methyltransferase 1 expression in wild-type (WT) and protein arginine methyltransferase 1 (PRMT1) shRNA knockdown (KD) HeLa cells with 20 µg of total cell lysates. Hsp90 α serves as a loading control. The blot was incubated with anti-protein arginine methyltransferase 1 antibody (Cat#63320, 1:5,000) and HRP-conjugated goat anti-rabbit secondary antibody (Cat#201, 1:20,000) respectively. Image was developed using NaQ™ ECL Substrate Kit (Cat#716).



Copyright ©2025 Genuin Biotechnologies LLC

### Protein arginine methyltransferase 1-Alexa Fluor® 647

Validation of Protein arginine methyltransferase 1 knockdown using flow cytometry. Wild-type(WT, Blue) and knockdown(KD, Green) HeLa cells were stained with anti-Protein arginine methyltransferase 1 antibody (Cat#63320, 1:2,000) and analyzed using BD flow cytometer.