

KD-Validated Anti-BCL2 Like 1 Rabbit Monoclonal Antibody



Catalog #: 63370

Aliases

BCL2L1; BCL2 Like 1; BCL2L; BCLX; PPP1R52; Bcl-X; Protein Phosphatase 1, Regulatory Subunit 52; Apoptosis Regulator Bcl-X; Bcl-2-Like Protein 1; Bcl-XL; Bcl-XS; BCL-XL/S; Bcl2-L-1

Background

Gene Name: BCL2L1

NCBI Gene Entry: [598](#)

UniProt Entry: [Q07817](#)

Application Information

Molecular Weight: Predicted, 26 kDa, observed, 30 kDa

Clonality: Rabbit monoclonal antibody

Clone ID: 24GB5350

Species Reactivity: Human, mouse, rat

Applications Tested: Western blotting (WB), flow cytometry (FCM), immunocytochemistry (IC)

Immunogen

Recombinant protein of human Bcl-XL

Isotype

Rabbit IgG

Storage Buffer

Supplied in PBS (pH 7.4) containing 50% glycerol, and 0.02% sodium azide.

Storage

Store at -20 °C for one year.

Recommended Dilutions

Western Blotting (WB): 1:1,000-1:5,000

Flow Cytometry (FCM): 1:2,000

Immunocytochemistry (IC): 1:100-1:1,000

Note: This product is for research use only.

SUPPORT

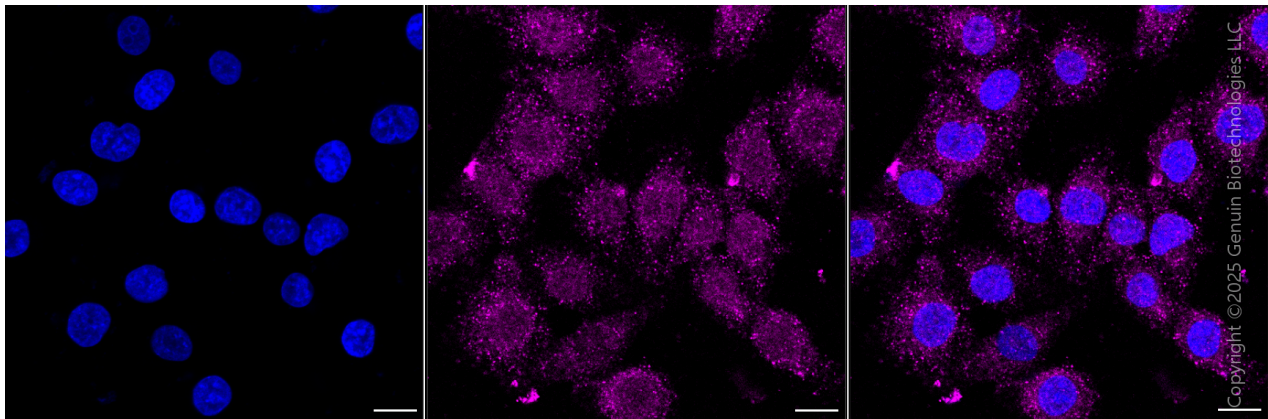
SUPPORT@GENUINBIOTECH.COM
TEL: +1-540-855-7041

ORDERS

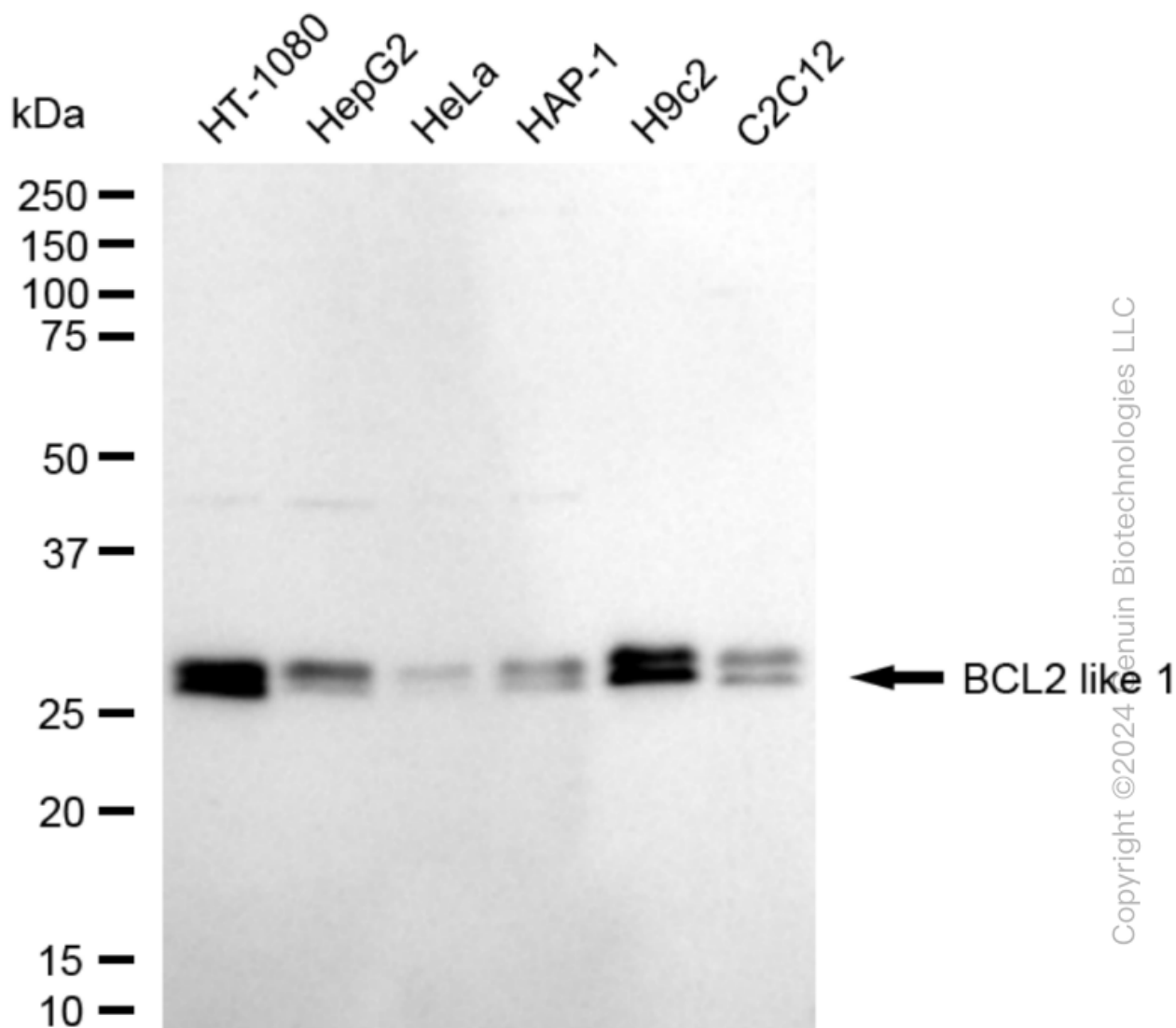
SALES@GENUINBIOTECH.COM
FAX: +1-540-855-7041

WWW.GENUINBIOTECH.COM

Validation Data

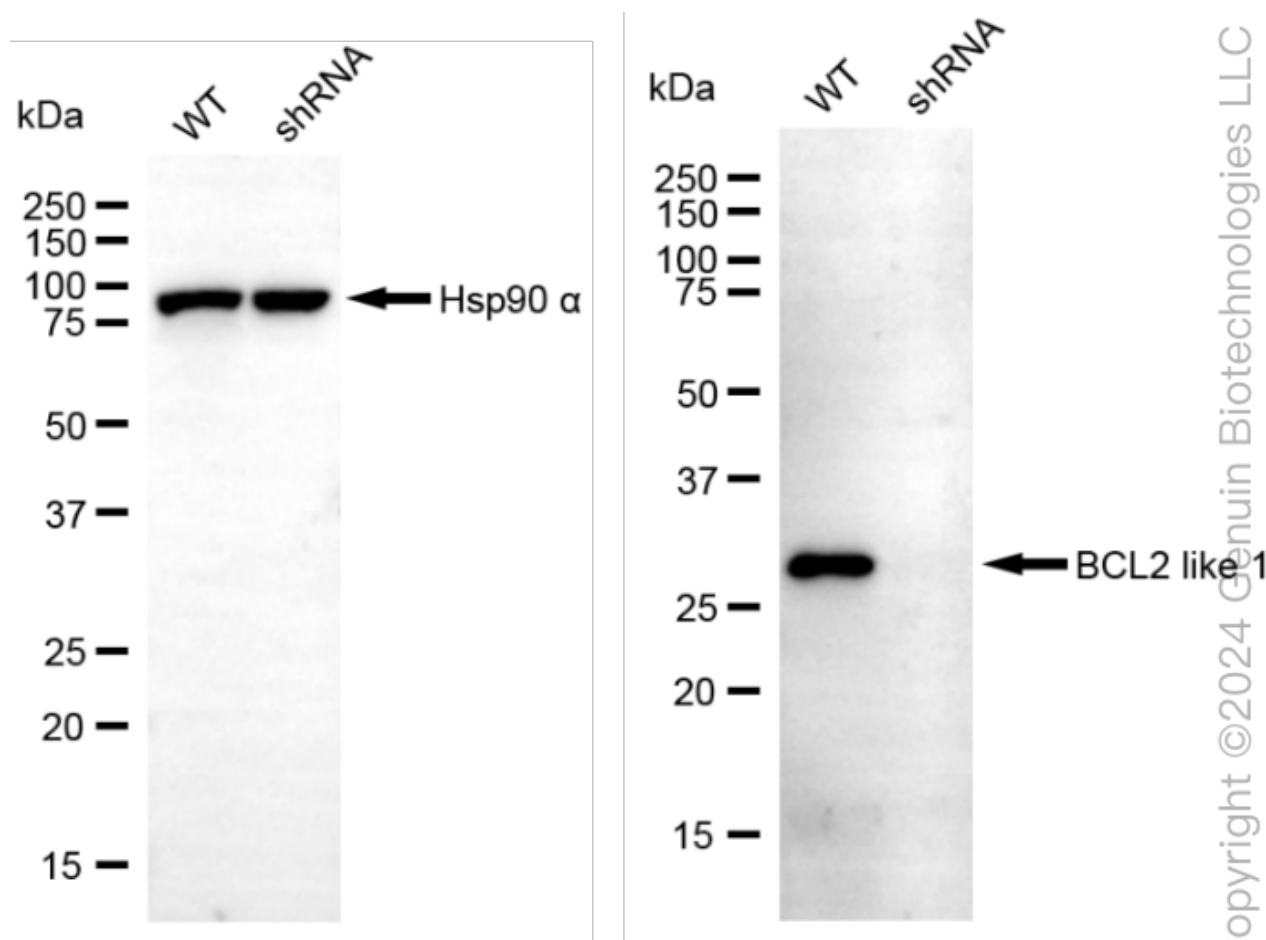


Immunocytochemical staining of HT-1080 cells with anti-BCL2 like 1 antibody(Cat#63370, 1:1,000) . Nuclei were stained blue with DAPI; BCL2 like 1 was stained magenta with Alexa Fluor® 647. Images were taken using Leica stellaris 5. Protein abundance based on laser Intensity and smart gain: Low. Scale bar, 20 μ m.

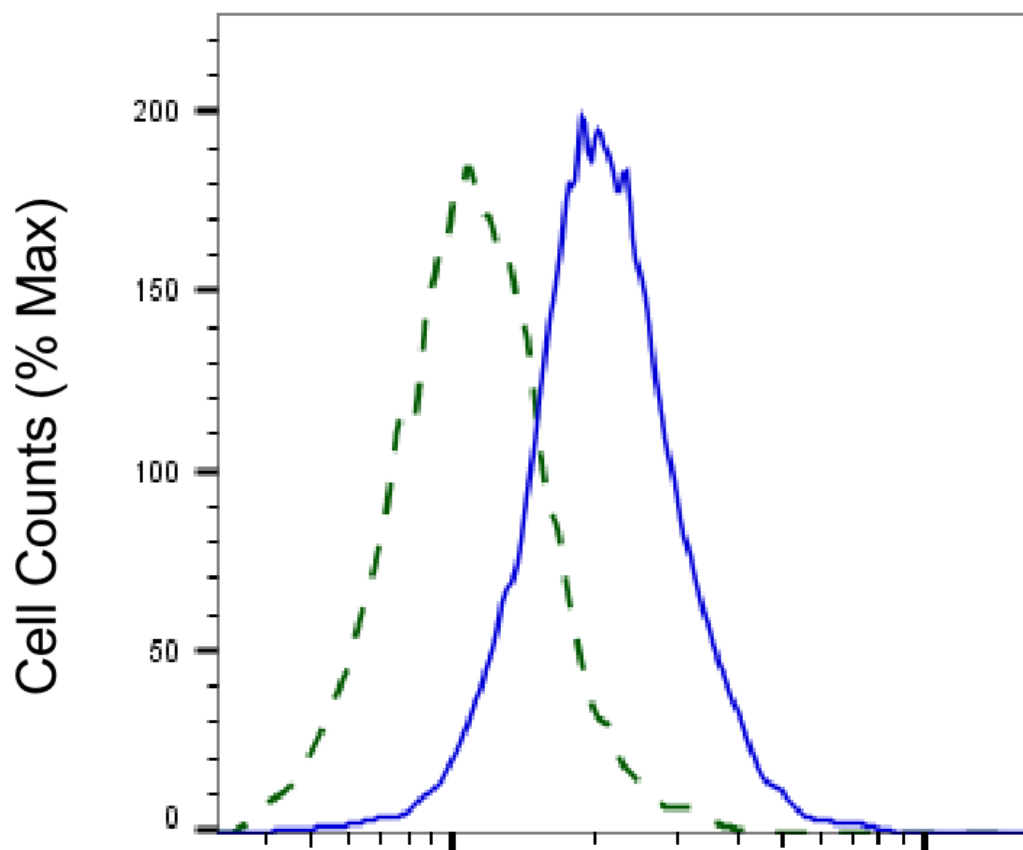


Copyright ©2024 Genuin Biotechnologies LLC

Western blotting analysis using anti-BCL2 like 1 antibody (Cat#63370). Total cell lysates (30 µg) from various cell lines were loaded and separated by SDS-PAGE. The blot was incubated with anti-BCL2 like 1 antibody (Cat#63370, 1:5,000) and HRP-conjugated goat anti-rabbit secondary antibody (Cat#201, 1:20,000) respectively. Image was developed using NaQ™ ECL Substrate Kit (Cat#716).



Western blotting analysis using anti-BCL2 like 1 antibody (Cat#63370). BCL2 like 1 expression in wild type (WT) and BCL2 like 1 (BCL2L1) shRNA knockdown (KD) HeLa cells with 20 µg of total cell lysates. β-Tubulin serves as a loading control. The blot was incubated with anti-BCL2 like 1 antibody (Cat#63370, 1:5,000) and HRP-conjugated goat anti-rabbit secondary antibody (Cat#201, 1:20,000) respectively. Image was developed using NaQ™ ECL Substrate Kit (Cat#716).



Copyright ©2025 Genuin Biotechnologies LLC

BCL2 like 1-Alexa Fluor® 647

Validation of BCL2 like 1 knockdown using flow cytometry. Wild-type(WT, Blue) and knockdown(KD, Green) HeLa cells were stained with anti-BCL2 like 1 antibody (Cat#63370, 1:2,000) and analyzed using BD flow cytometer.