

KD-Validated Anti-E2F Transcription Factor 4 Rabbit Monoclonal Antibody



Catalog #: 63375

Aliases

E2F4; E2F Transcription Factor 4; E2F-4; E2F Transcription Factor 4, P107/P130-Binding; Transcription Factor E2F4; P107/P130-Binding Protein

Background

Gene Name: E2F4

NCBI Gene Entry: [1874](#)

UniProt Entry: [Q16254](#)

Application Information

Molecular Weight: Predicted, 44 kDa, observed, 65 kDa

Clonality: Rabbit monoclonal antibody

Clone ID: 24GB5375

Species Reactivity: Human

Applications Tested: Western blotting (WB), flow cytometry (FCM), immunocytochemistry (IC)

Immunogen

A synthesized peptide derived from human E2F4

Isotype

Rabbit IgG

Storage Buffer

Supplied in PBS (pH 7.4) containing 50% glycerol, and 0.02% sodium azide.

Storage

Store at -20 °C for one year.

Recommended Dilutions

Western Blotting (WB): 1:500-1:2,500

Flow Cytometry (FCM): 1:2,000

Immunocytochemistry (IC): 1:100-1:1,000

Note: This product is for research use only.

Validation Data

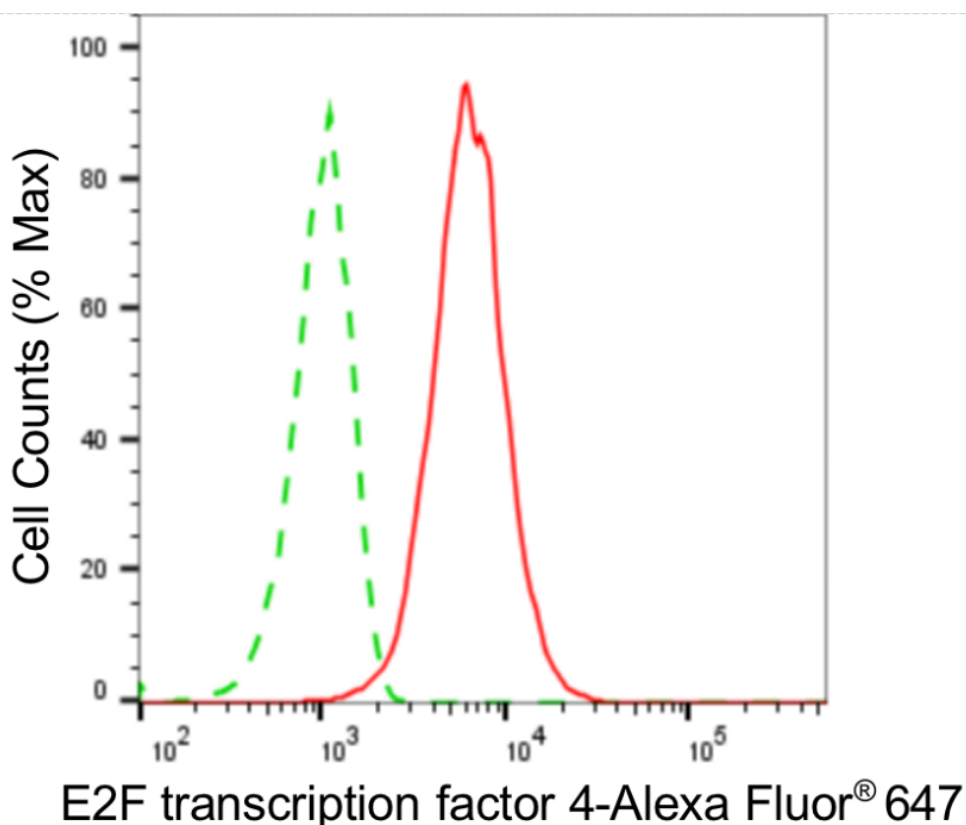
SUPPORT

SUPPORT@GENUINBIOTECH.COM
TEL: +1-540-855-7041

ORDERS

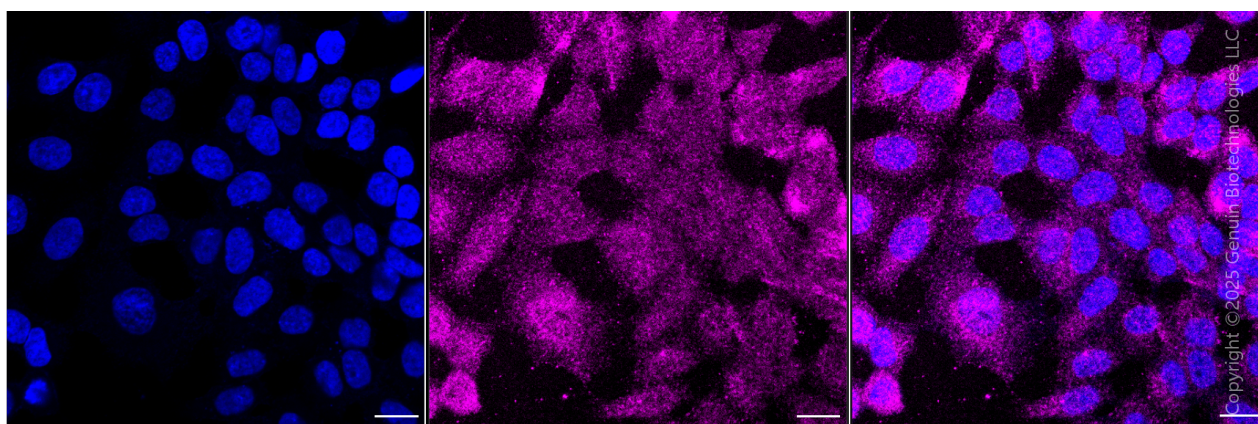
SALES@GENUINBIOTECH.COM
FAX: +1-540-855-7041

WWW.GENUINBIOTECH.COM



Copyright ©2024 Genuin Biotechnologies LLC

Flow cytometric analysis of E2F transcription factor 4 expression in HAP-1 cells using anti-E2F transcription factor 4 antibody (Cat#63375, 1:2,000). Green, isotype control; red, E2F transcription factor 4.



Immunocytochemical staining of HAP1 cells with anti-E2F transcription factor 4 antibody (Cat#63375, 1:1,000). Nuclei were stained blue with DAPI; E2F transcription factor 4 was stained magenta with Alexa Fluor® 647. Images were taken using Leica stellaris 5. Protein abundance based on laser Intensity and smart gain: Medium. Scale bar, 20 µm.

SUPPORT

SUPPORT@GENUINBIOTECH.COM
TEL: +1-540-855-7041

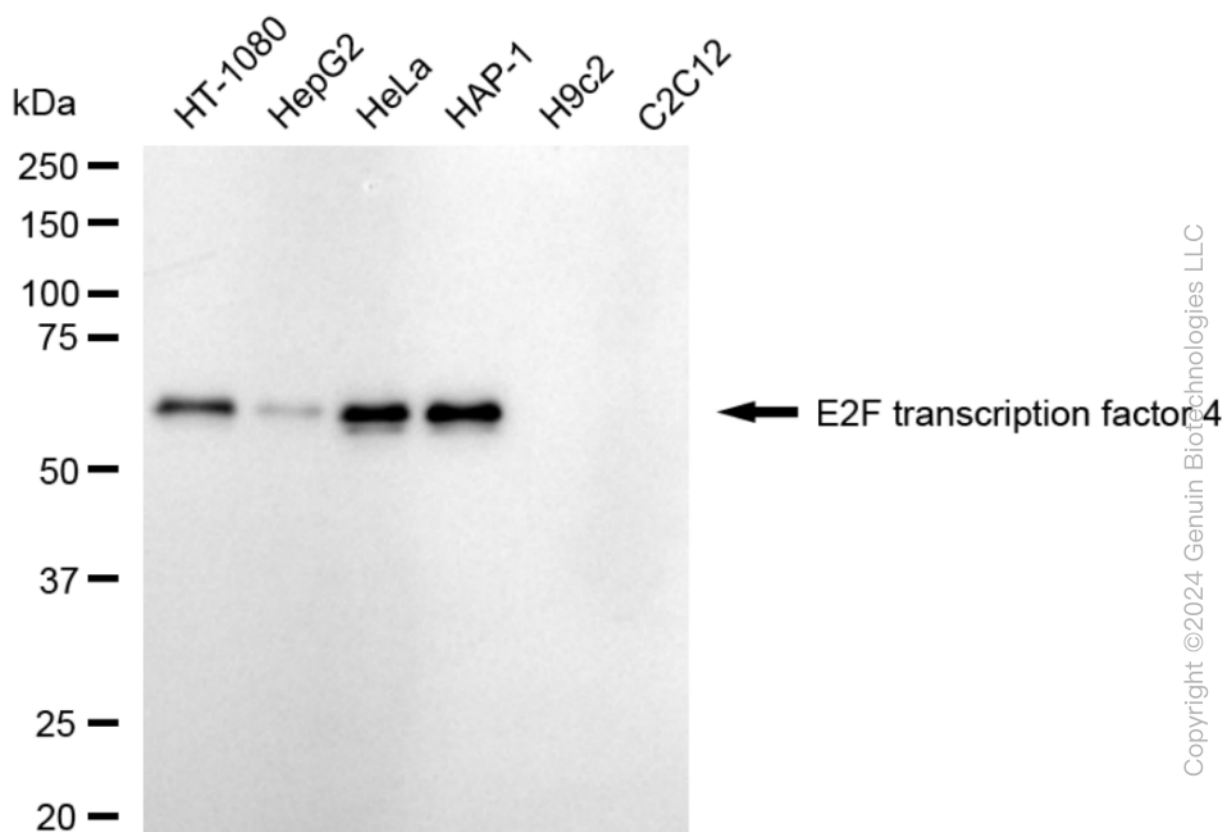
ORDERS

SALES@GENUINBIOTECH.COM
FAX: +1-540-855-7041

WWW.GENUINBIOTECH.COM

KD-Validated Anti-E2F Transcription Factor 4 Rabbit Monoclonal Antibody

PAGE 3



Western blotting analysis using anti-E2F transcription factor 4 antibody (Cat#63375). Total cell lysates (30 µg) from various cell lines were loaded and separated by SDS-PAGE. The blot was incubated with anti-E2F transcription factor 4 antibody (Cat#63375, 1:2,500) and HRP-conjugated goat anti-rabbit secondary antibody (Cat#201, 1:20,000) respectively. Image was developed using NaQ™ ECL Substrate Kit (Cat#716).

SUPPORT

SUPPORT@GENUINBIOTECH.COM
TEL: +1-540-855-7041

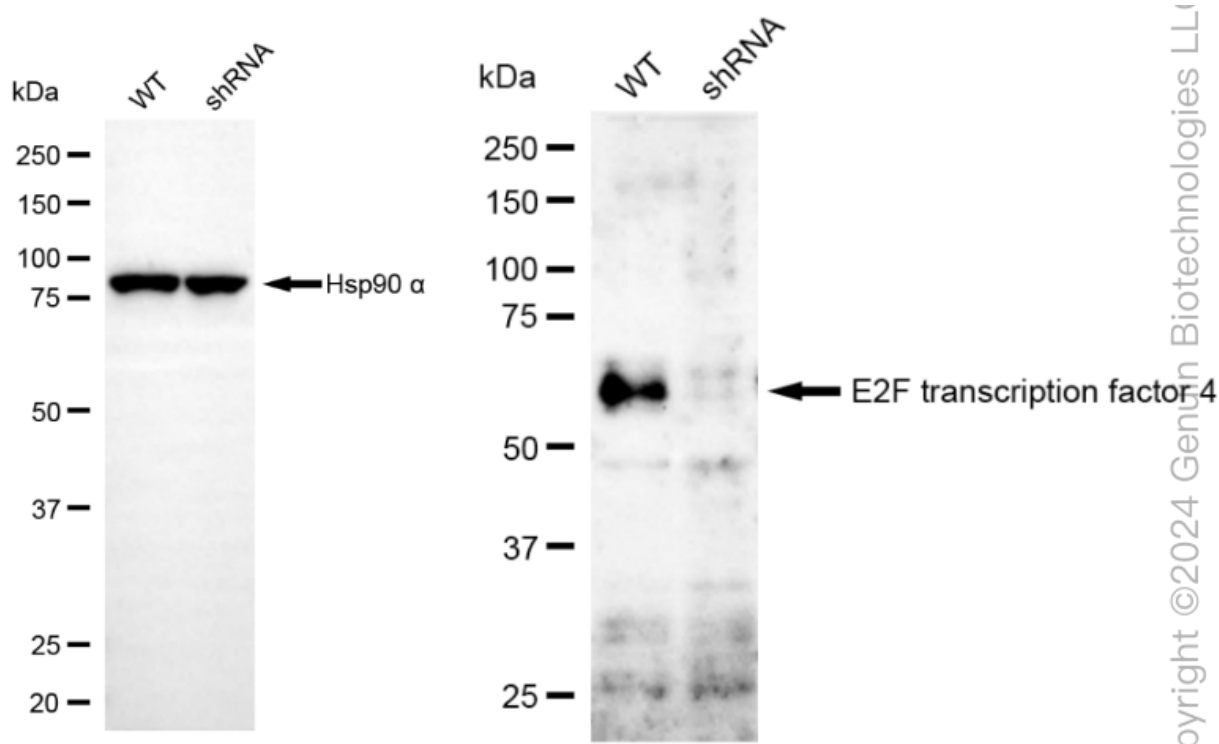
ORDERS

SALES@GENUINBIOTECH.COM
FAX: +1-540-855-7041

WWW.GENUINBIOTECH.COM

KD-Validated Anti-E2F Transcription Factor 4 Rabbit Monoclonal Antibody

PAGE 4



Western blotting analysis using anti-E2F transcription factor 4 antibody (Cat#63375). E2F transcription factor 4 expression in wild type (WT) and E2F transcription factor 4 (E2F4) shRNA knockdown (KD) HeLa cells with 20 µg of total cell lysates. Hsp90 α serves as a loading control. The blot was incubated with anti-E2F transcription factor 4 antibody (Cat#63375, 1:2,500) and HRP-conjugated goat anti-rabbit secondary antibody (Cat#201, 1:20,000) respectively. Image was developed using NaQ™ ECL Substrate Kit (Cat#716).

SUPPORT

SUPPORT@GENUINBIOTECH.COM
TEL: +1-540-855-7041

ORDERS

SALES@GENUINBIOTECH.COM
FAX: +1-540-855-7041

WWW.GENUINBIOTECH.COM