

KD-Validated Anti-PDPK1 Rabbit Monoclonal Antibody



Catalog #: 63385

Aliases

PDPK1; 3-Phosphoinositide Dependent Protein Kinase 1; PDK1; 3-Phosphoinositide-Dependent Protein Kinase 1; EC 2.7.11.1; 3-Phosphoinositide-Dependent Protein Kinase 2 Pseudogene; Putative 3-Phosphoinositide-Dependent Protein Kinase; PkB Kinase Like Gene 1; PkB Kinase; EC 2.7.11; PRO0461; PDPK2P; PDPK2; HPDK1

Background

Gene Name: PDPK1

NCBI Gene Entry: [5170](#)

UniProt Entry: [O15530](#)

Application Information

Molecular Weight: Predicted, 63 kDa, observed, 63 kDa

Clonality: Rabbit monoclonal antibody

Clone ID: 24GB5425

Species Reactivity: Human, rat

Applications Tested: Western blotting (WB), flow cytometry (FCM), immunocytochemistry (IC)

Immunogen

A synthesized peptide derived from human PDPK1

Isotype

Rabbit IgG

Storage Buffer

Supplied in PBS (pH 7.4) containing 50% glycerol, and 0.02% sodium azide.

Storage

Store at -20 °C for one year.

Recommended Dilutions

Western Blotting (WB): 1:1,000-1:5,000

Flow Cytometry (FCM): 1:2,000

Immunocytochemistry (IC): 1:100-1:1,000

SUPPORT

SUPPORT@GENUINBIOTECH.COM
TEL: +1-540-855-7041

ORDERS

SALES@GENUINBIOTECH.COM
FAX: +1-540-855-7041

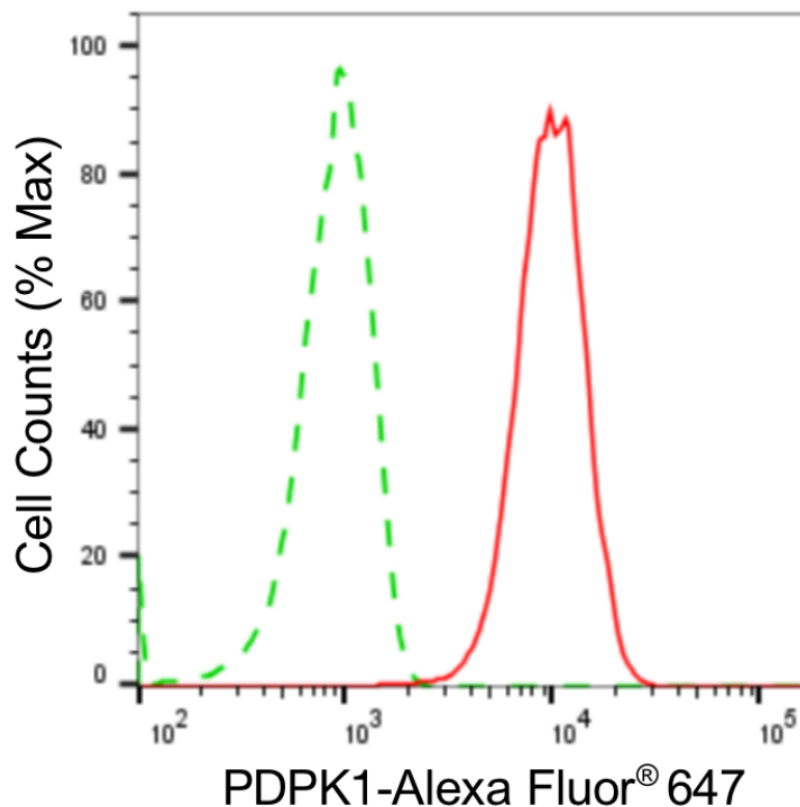
WWW.GENUINBIOTECH.COM

KD-Validated Anti-PDPK1 Rabbit Monoclonal Antibody

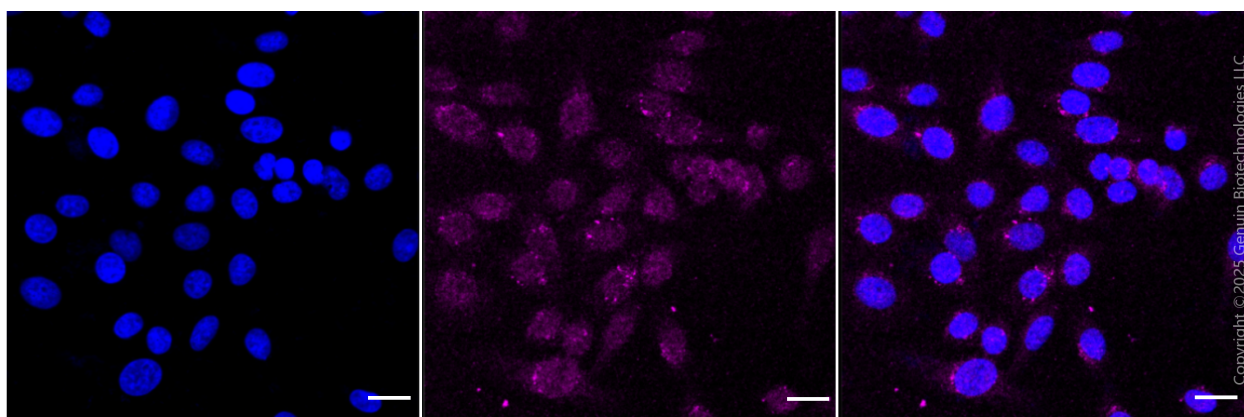
PAGE 2

Note: This product is for research use only.

Validation Data



Copyright ©2024 Genuin Biotechnologies LLC



Copyright ©2025 Genuin Biotechnologies LLC

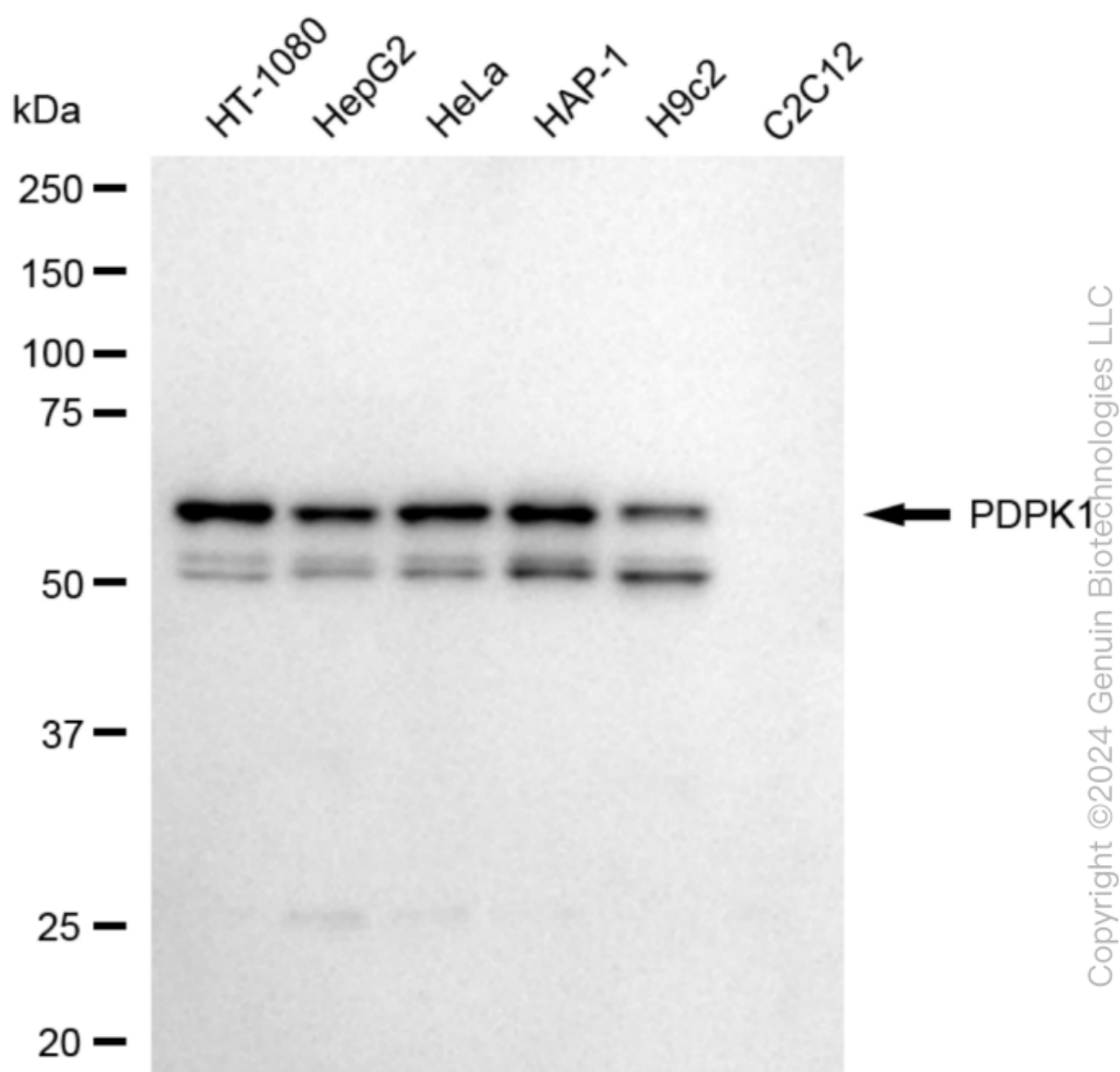
SUPPORT

SUPPORT@GENUINBIOTECH.COM
TEL: +1-540-855-7041

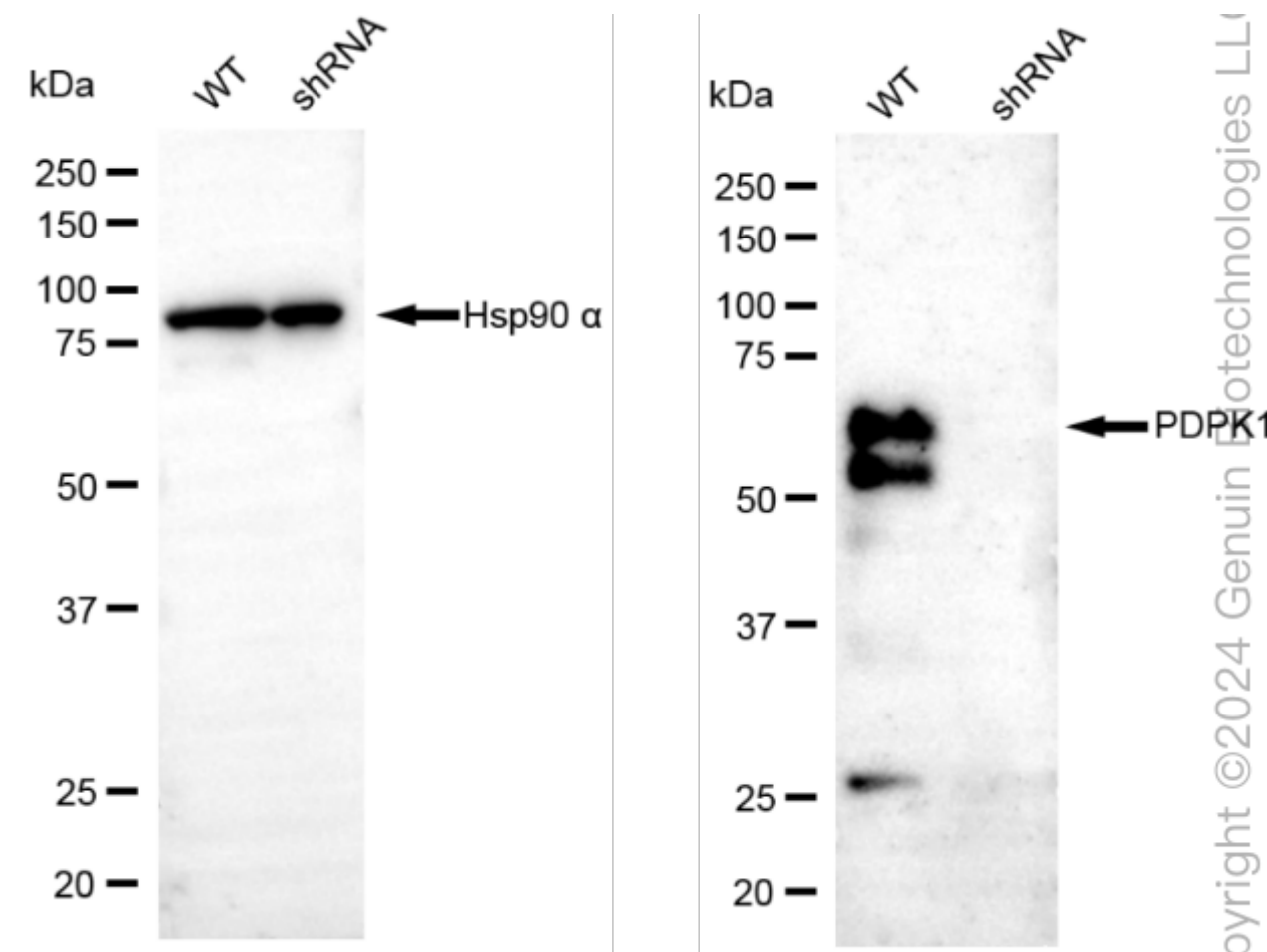
ORDERS

SALES@GENUINBIOTECH.COM
FAX: +1-540-855-7041

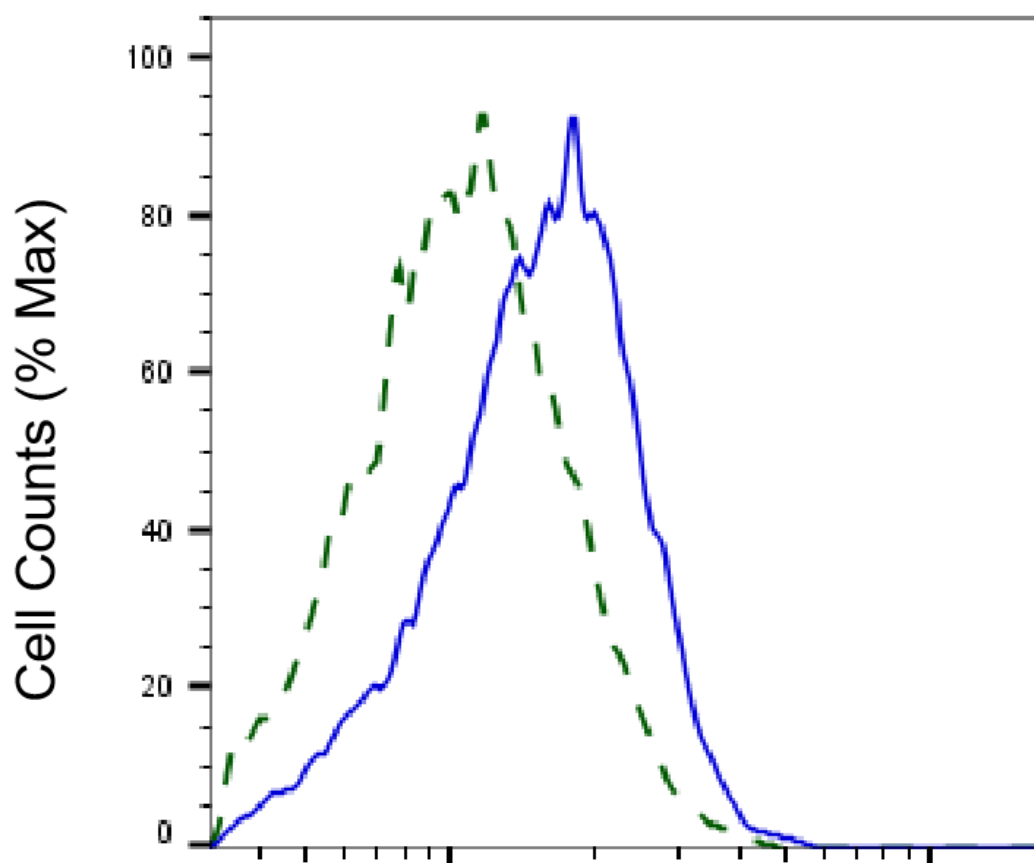
WWW.GENUINBIOTECH.COM



Western blotting analysis using anti-PDPK1 antibody (Cat#63385). Total cell lysates (30 µg) from various cell lines were loaded and separated by SDS-PAGE. The blot was incubated with anti-PDPK1 antibody (Cat#63385, 1:5,000) and HRP-conjugated goat anti-rabbit secondary antibody (Cat#201, 1:20,000) respectively. Image was developed using FeQ™ ECL Substrate Kit (Cat#226). PDPK1, 3-phosphoinositide dependent protein kinase 1.



Western blotting analysis using anti-PDPK1 antibody (Cat#63385). PDPK1 expression in wild type (WT) and PDPK1 shRNA knockdown (KD) HeLa cells with 20 μ g of total cell lysates. β -Tubulin serves as a loading control. The blot was incubated with anti-PDPK1 antibody (Cat#63385, 1:5,000) and HRP-conjugated goat anti-rabbit secondary antibody (Cat#201, 1:20,000) respectively. Image was developed using NaQ™ ECL Substrate Kit (Cat#716).



Copyright ©2025 Genuin Biotechnologies LLC

PDPK1-Alexa Fluor® 647

Validation of PDPK1 knockdown using flow cytometry. Wild-type(WT, Blue) and knockdown(KD, Green) HeLa cells were stained with anti-PDPK1 antibody (Cat#63385, 1:2,000) and analyzed using BD flow cytometer.