

# KD-Validated Anti-NK2 Homeobox 1 Rabbit Monoclonal Antibody



**Catalog #: 63388**

## Aliases

NKX2-1; NK2 Homeobox 1; TTF-1; TTF1; Thyroid Transcription Factor 1; NKX2A; TITF1; Thyroid-Specific Enhancer-Binding Protein; Homeobox Protein NK-2 Homolog A; Homeobox Protein Nkx-2.1; Thyroid Nuclear Factor 1; T/EBP; BCH; NK-2 Homolog A; Benign Chorea; NKX2.1; NMTC1; NK-2; TEBP; BHC

## Background

Gene Name: NKX2-1

NCBI Gene Entry: [7080](#)

UniProt Entry: [P43699](#)

## Application Information

Molecular Weight: Predicted, 39 kDa, observed, 42 kDa

Clonality: Rabbit monoclonal antibody

Clone ID: 24GB5440

Species Reactivity: Human

Applications Tested: Western blotting (WB), flow cytometry (FCM)

## Immunogen

A synthesized peptide derived from human TTF1

## Isotype

Rabbit IgG

## Storage Buffer

Supplied in PBS (pH 7.4) containing 50% glycerol, and 0.02% sodium azide.

## Storage

Store at -20 °C for one year.

## Recommended Dilutions

Western Blotting (WB): 1:1,000-1:5,000

Flow Cytometry (FCM): 1:2,000

**Note:** This product is for research use only.

---

### SUPPORT

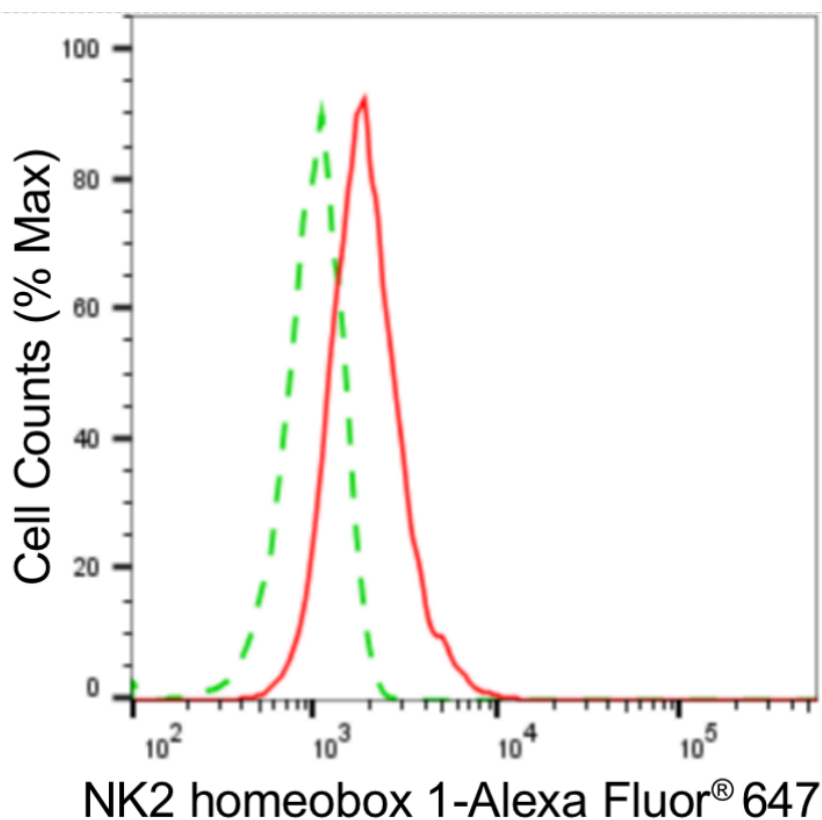
SUPPORT@GENUINBIOTECH.COM  
TEL: +1-540-855-7041

### ORDERS

SALES@GENUINBIOTECH.COM  
FAX: +1-540-855-7041

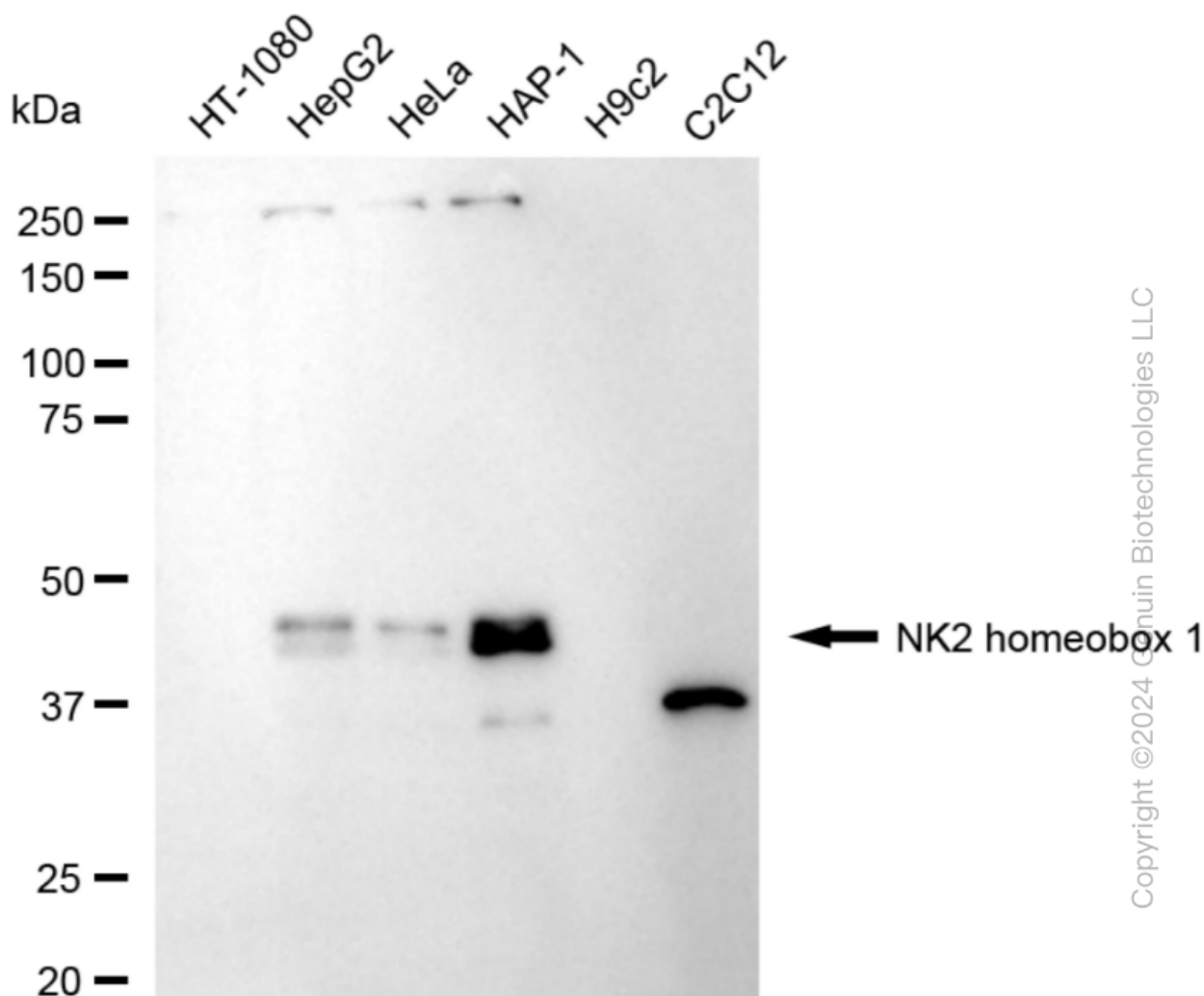
[WWW.GENUINBIOTECH.COM](http://WWW.GENUINBIOTECH.COM)

**Validation Data**



Copyright ©2024 Genuin Biotechnologies LLC

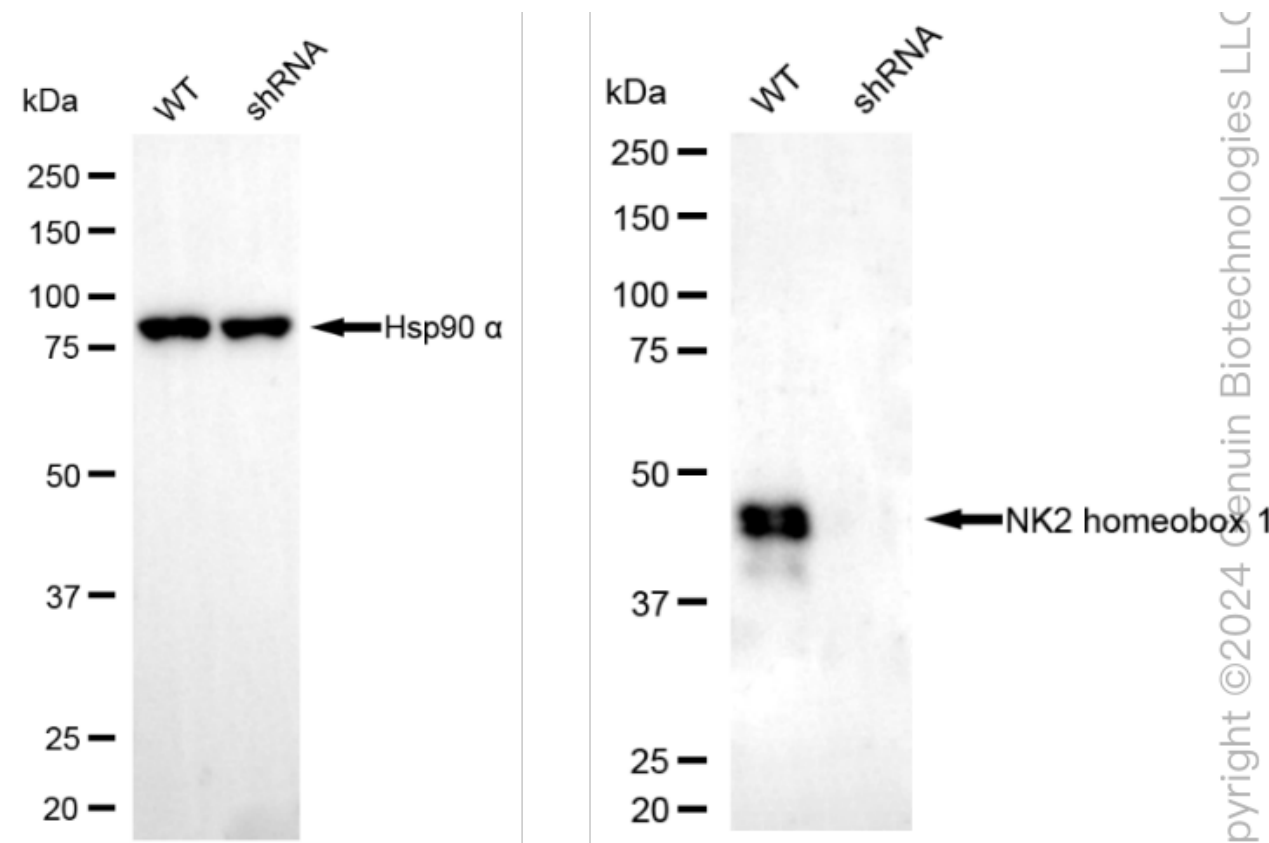
Flow cytometric analysis of NK2 homeobox 1 expression in HAP-1 cells using anti-NK2 homeobox 1 antibody (Cat#63388, 1:2,000). Green, isotype control; red, NK2 homeobox 1.



Western blotting analysis using anti-NK2 homeobox 1 antibody (Cat#63388). Total cell lysates (30 µg) from various cell lines were loaded and separated by SDS-PAGE. The blot was incubated with anti-NK2 homeobox 1 antibody (Cat#63388, 1:5,000) and HRP-conjugated goat anti-rabbit secondary antibody (Cat#201, 1:20,000) respectively. Image was developed using NaQ™ ECL Substrate Kit (Cat#716).

## KD-Validated Anti-NK2 Homeobox 1 Rabbit Monoclonal Antibody

PAGE 4



Western blotting analysis using anti-NK2 homeobox 1 antibody (Cat#63388). NK2 homeobox 1 expression in wild type (WT) and NK2 homeobox 1 (NKX2-1) shRNA knockdown (KD) HeLa cells with 30  $\mu$ g of total cell lysates. Hsp90  $\alpha$  serves as a loading control. The blot was incubated with anti-NK2 homeobox 1 antibody (Cat#63388, 1:5,000) and HRP-conjugated goat anti-rabbit secondary antibody (Cat#201, 1:20,000) respectively. Image was developed using FeQ™ ECL Substrate Kit (Cat#226).

### SUPPORT

SUPPORT@GENUINBIOTECH.COM  
TEL: +1-540-855-7041

### ORDERS

SALES@GENUINBIOTECH.COM  
FAX: +1-540-855-7041

[WWW.GENUINBIOTECH.COM](http://WWW.GENUINBIOTECH.COM)