

# KD-Validated Anti-Phospho-HSF1 (Ser303/Ser307) Rabbit Monoclonal Antibody



**Catalog #: 63389**

## Aliases

HSF1; Heat Shock Transcription Factor 1; HSTF1; Heat Shock Factor Protein 1; HSTF; HSF

## Background

Gene Name: HSF1

NCBI Gene Entry: [3297](#)

UniProt Entry: [Q00613](#)

## Application Information

Molecular Weight: Predicted, 57 kDa, observed, 73 kDa

Clonality: Rabbit monoclonal antibody

Clone ID: 24GB5445

Species Reactivity: Human

Applications Tested: Western blotting (WB), flow cytometry (FCM), immunocytochemistry (IC)

## Immunogen

A synthesized peptide derived from human Phospho-HSF1 (Ser303/Ser307)

## Isotype

Rabbit IgG

## Storage Buffer

Supplied in PBS (pH 7.4) containing 50% glycerol, and 0.02% sodium azide.

## Storage

Store at -20 °C for one year.

## Recommended Dilutions

Western Blotting (WB): 1:1,000-1:5,000

Flow Cytometry (FCM): 1:2,000

Immunocytochemistry (IC): 1:100-1:1,000

**Note:** This product is for research use only.

## Validation Data

---

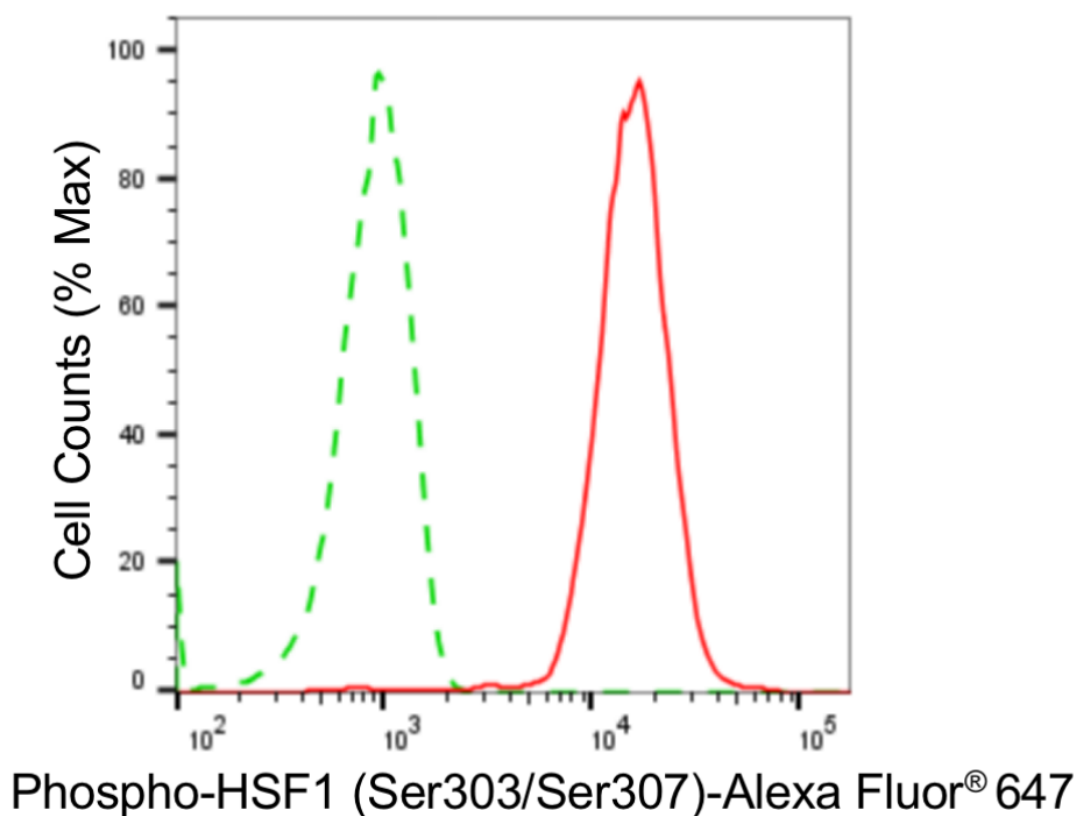
### SUPPORT

SUPPORT@GENUINBIOTECH.COM  
TEL: +1-540-855-7041

### ORDERS

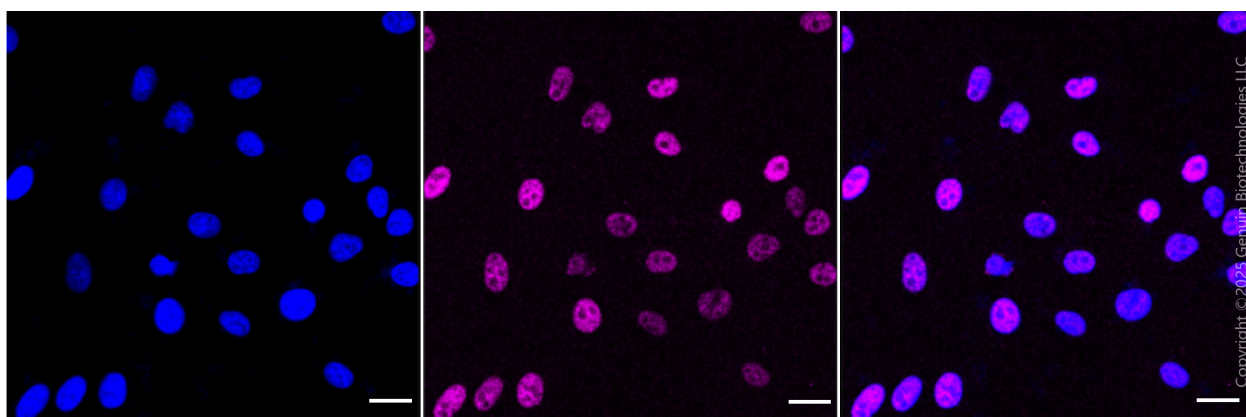
SALES@GENUINBIOTECH.COM  
FAX: +1-540-855-7041

[WWW.GENUINBIOTECH.COM](http://WWW.GENUINBIOTECH.COM)



Copyright ©2024 Genuin Biotechnologies LLC

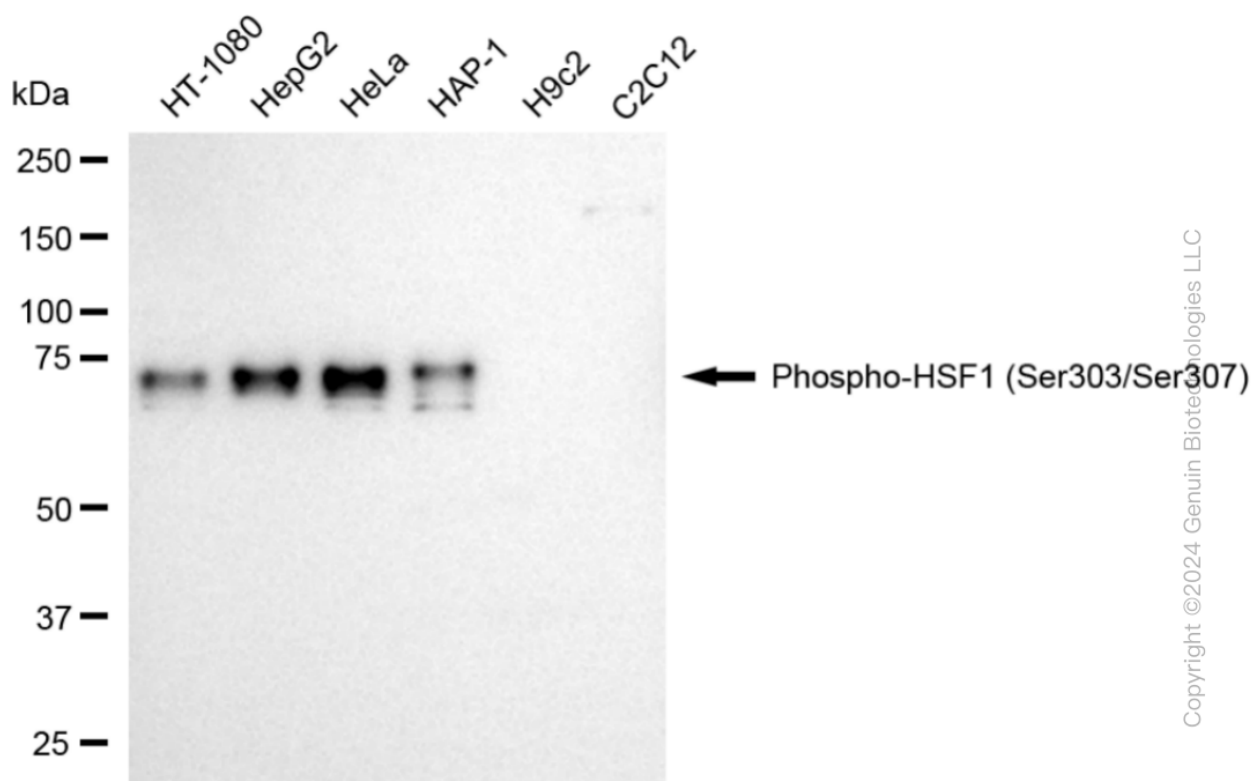
Flow cytometric analysis of Phospho-HSF1 (Ser303/Ser307) expression in HepG2 cells using anti-Phospho-HSF1 (Ser303/Ser307) antibody (Cat#63389, 1:2,000). Green, isotype control; red, Phospho-HSF1 (Ser303/Ser307).



Immunocytochemical staining of HepG2 cells with anti-phospho-HSF1 (Ser303/Ser307) antibody (Cat#63389, 1:1,000). Nuclei were stained blue with DAPI; Phospho-HSF1 (Ser303/Ser307) was stained magenta with Alexa Fluor® 647. Images were taken using Leica stellaris 5. Protein abundance based on laser Intensity and smart gain: Medium. Scale bar: 20  $\mu$ m.

## KD-Validated Anti-Phospho-HSF1 (Ser303/Ser307) Rabbit Monoclonal Antibody

PAGE 3



Western blotting analysis using anti-phospho-HSF1 (Ser303/Ser307) antibody (Cat#63389). Total cell lysates (30 µg) from various cell lines were loaded and separated by SDS-PAGE. The blot was incubated with anti-phospho-HSF1 (Ser303/Ser307) antibody (Cat#63389, 1:5,000) and HRP-conjugated goat anti-rabbit secondary antibody (Cat#201, 1:20,000) respectively. Image was developed using NaQ™ ECL Substrate Kit (Cat#716).

### SUPPORT

SUPPORT@GENUINBIOTECH.COM  
TEL: +1-540-855-7041

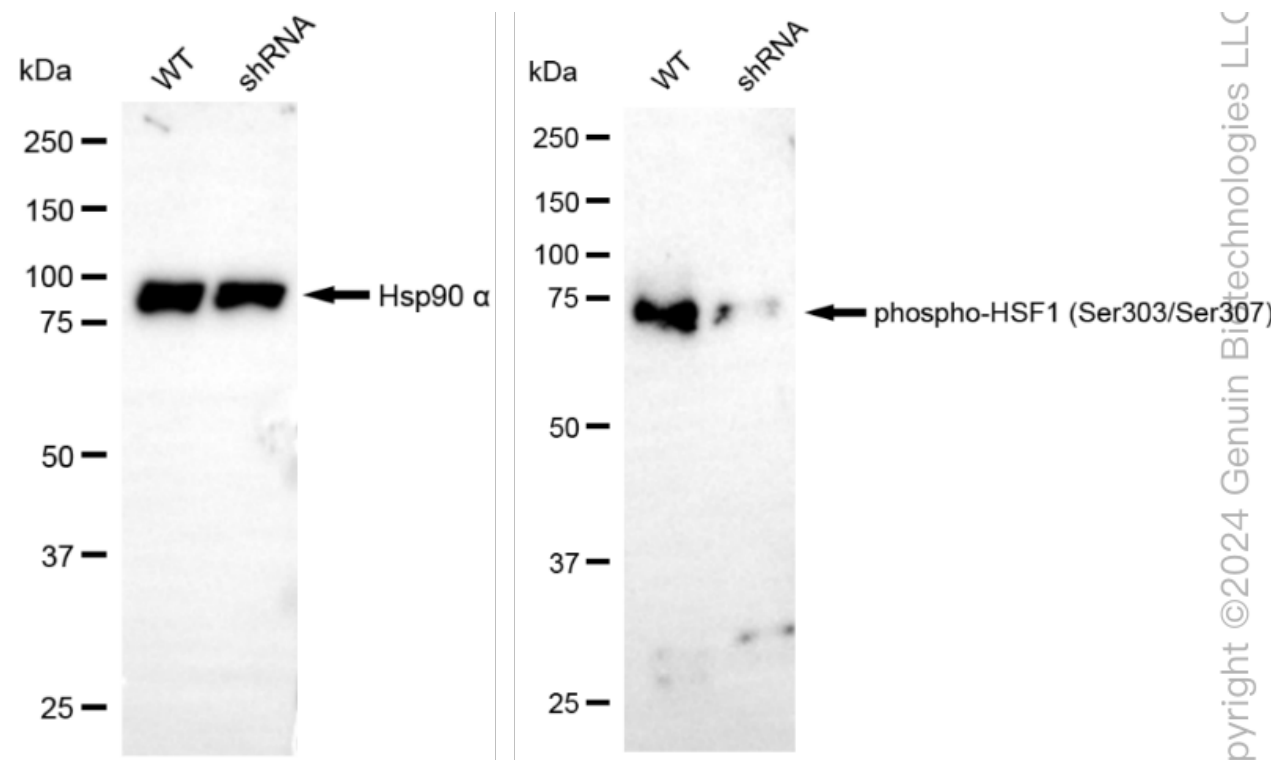
### ORDERS

SALES@GENUINBIOTECH.COM  
FAX: +1-540-855-7041

[WWW.GENUINBIOTECH.COM](http://WWW.GENUINBIOTECH.COM)

## KD-Validated Anti-Phospho-HSF1 (Ser303/Ser307) Rabbit Monoclonal Antibody

PAGE 4



Western blotting analysis using anti-phospho-HSF1 (Ser303/Ser307) antibody (Cat#63389). Phospho-HSF1 (Ser303/Ser307) expression in wild type (WT) and HSF1 shRNA knockdown (KD) 293T cells with 20 µg of total cell lysates. Hsp90 α serves as a loading control. The blot was incubated with anti-phospho-HSF1 (Ser303/Ser307) antibody (Cat#63389, 1:5,000) and HRP-conjugated goat anti-rabbit secondary antibody (Cat#201, 1:20,000) respectively. Image was developed using NaQ™ ECL Substrate Kit (Cat#716). HSF1, heat shock transcription factor 1.

### SUPPORT

SUPPORT@GENUINBIOTECH.COM  
TEL: +1-540-855-7041

### ORDERS

SALES@GENUINBIOTECH.COM  
FAX: +1-540-855-7041

[WWW.GENUINBIOTECH.COM](http://WWW.GENUINBIOTECH.COM)