

# KD-Validated Anti-Ring Finger Protein 2 Rabbit Monoclonal Antibody



**Catalog #: 63391**

## Aliases

RNF2; Ring Finger Protein 2; RING1B; HIPI3; BAP1; DING; BAP-1; RING2; Huntingtin-Interacting Protein 2-Interacting Protein 3; RING-Type E3 Ubiquitin Transferase RING2; E3 Ubiquitin-Protein Ligase RING2; HIP2-Interacting Protein 3; RING Finger Protein BAP-1; RING Finger Protein 1B; Protein DinG; RING Finger Protein; EC 2.3.2.27; EC 6.3.2; LUSYAM; RING1b

## Background

Gene Name: RNF2

NCBI Gene Entry: [6045](#)

UniProt Entry: [Q99496](#)

## Application Information

Molecular Weight: Predicted, 38 kDa, observed, 38 kDa

Clonality: Rabbit monoclonal antibody

Clone ID: 24GB5455

Species Reactivity: Human, mouse, rat

Applications Tested: Western blotting (WB), flow cytometry (FCM)

## Immunogen

A synthesized peptide derived from human RING2 / RING1B / RNF2

## Isotype

Rabbit IgG

## Storage Buffer

Supplied in PBS (pH 7.4) containing 50% glycerol, and 0.02% sodium azide.

## Storage

Store at -20 °C for one year.

## Recommended Dilutions

Western Blotting (WB): 1:1,000-1:5,000

Flow Cytometry (FCM): 1:2,000

---

### SUPPORT

SUPPORT@GENUINBIOTECH.COM  
TEL: +1-540-855-7041

### ORDERS

SALES@GENUINBIOTECH.COM  
FAX: +1-540-855-7041

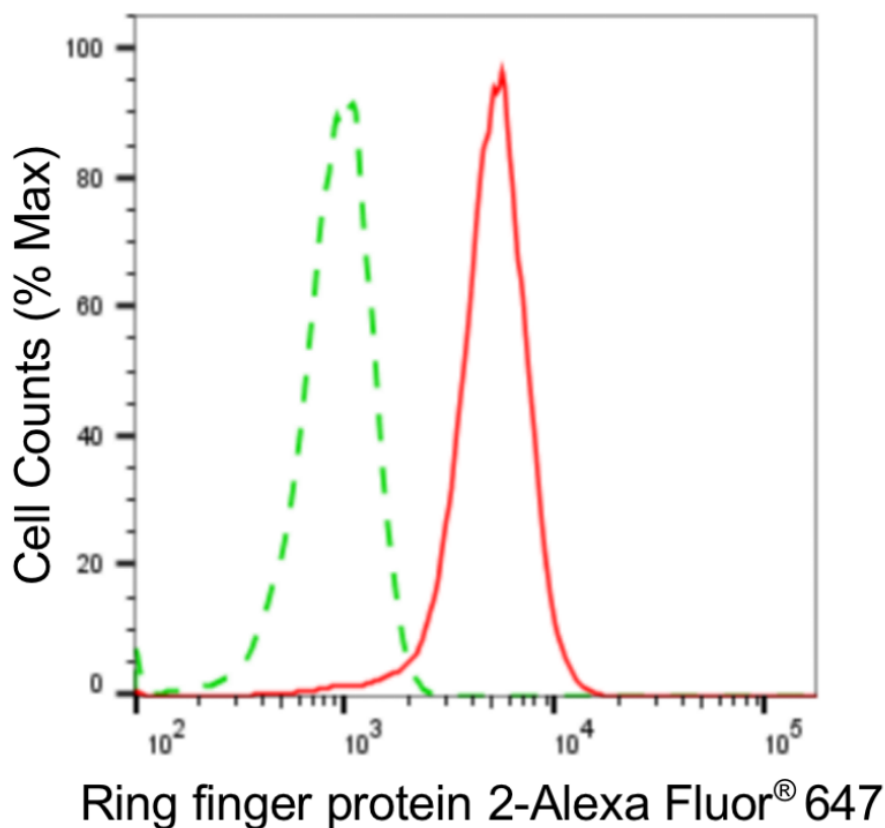
[WWW.GENUINBIOTECH.COM](http://WWW.GENUINBIOTECH.COM)

## KD-Validated Anti-Ring Finger Protein 2 Rabbit Monoclonal Antibody

PAGE 2

**Note:** This product is for research use only.

### Validation Data



Copyright ©2024 Genuin Biotechnologies LLC

Flow cytometric analysis of Ring finger protein 2 expression in HeLa cells using anti-Ring finger protein 2 antibody (Cat#63391, 1:2,000). Green, isotype control; red, Ring finger protein 2.

#### SUPPORT

SUPPORT@GENUINBIOTECH.COM  
TEL: +1-540-855-7041

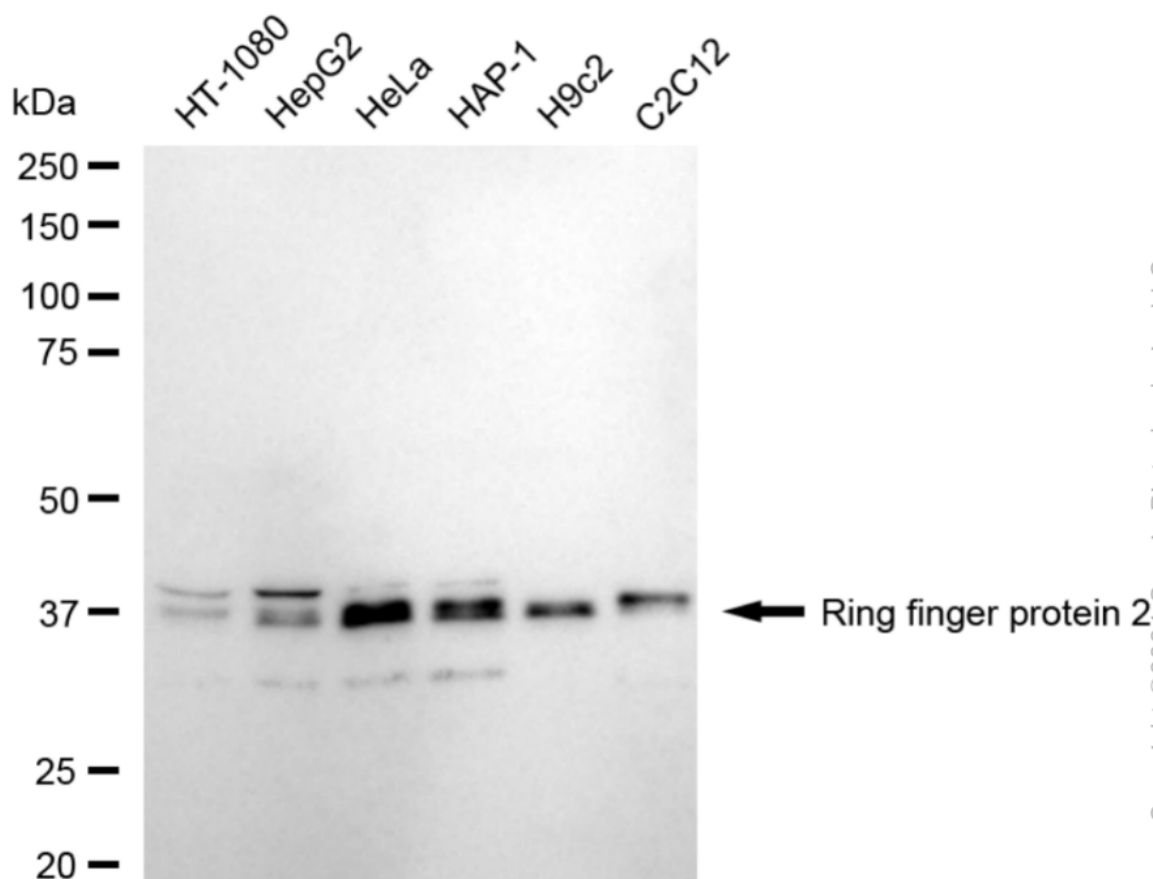
#### ORDERS

SALES@GENUINBIOTECH.COM  
FAX: +1-540-855-7041

[WWW.GENUINBIOTECH.COM](http://WWW.GENUINBIOTECH.COM)

## KD-Validated Anti-Ring Finger Protein 2 Rabbit Monoclonal Antibody

PAGE 3



Western blotting analysis using anti-ring finger protein 2 antibody (Cat#63391). Total cell lysates (30 µg) from various cell lines were loaded and separated by SDS-PAGE. The blot was incubated with anti-ring finger protein 2 antibody (Cat#63391, 1:5,000) and HRP-conjugated goat anti-rabbit secondary antibody (Cat#201, 1:20,000) respectively. Image was developed using NaQ™ ECL Substrate Kit (Cat#716).

### SUPPORT

SUPPORT@GENUINBIOTECH.COM  
TEL: +1-540-855-7041

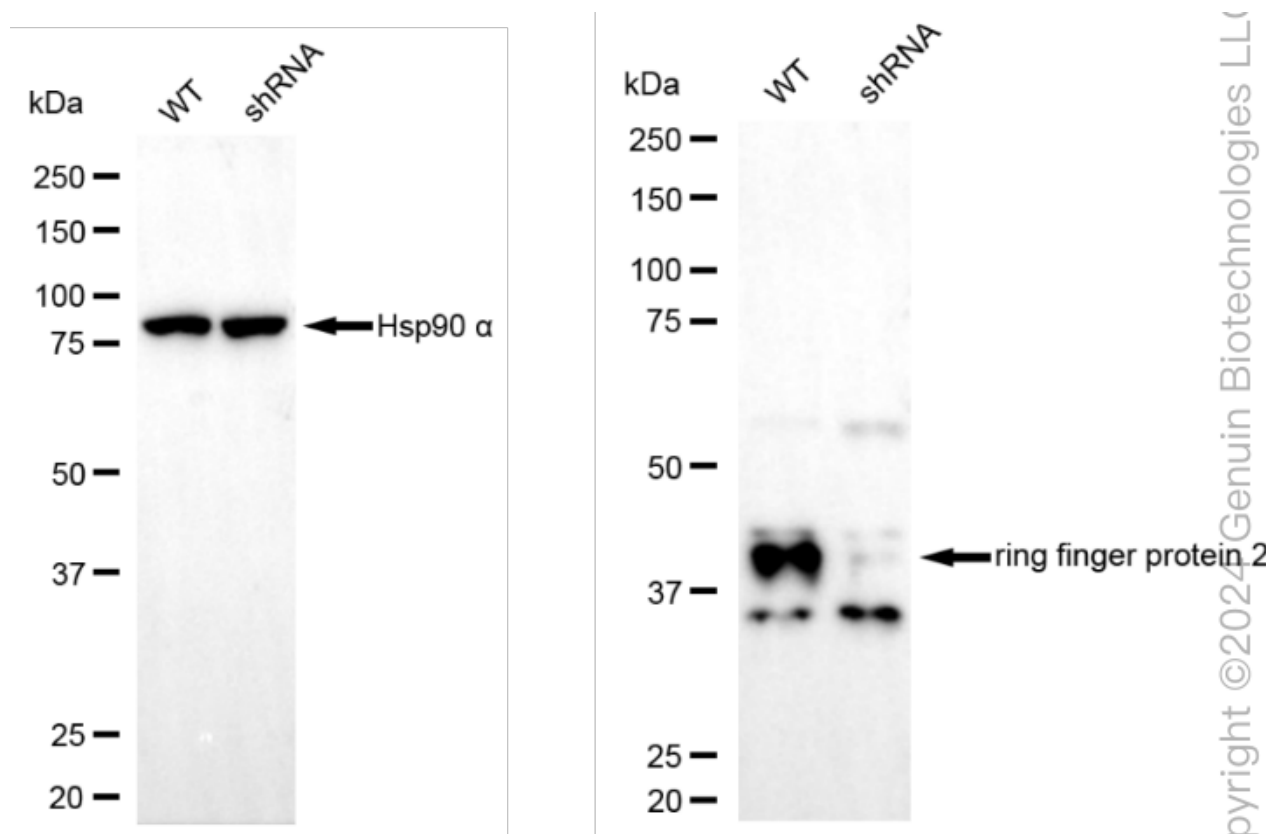
### ORDERS

SALES@GENUINBIOTECH.COM  
FAX: +1-540-855-7041

[WWW.GENUINBIOTECH.COM](http://WWW.GENUINBIOTECH.COM)

## KD-Validated Anti-Ring Finger Protein 2 Rabbit Monoclonal Antibody

PAGE 4



Western blotting analysis using anti-ring finger protein 2 antibody (Cat#63391). Ring finger protein 2 expression in wild type (WT) and ring finger protein 2 (RNF2) shRNA knockdown (KD) HT-1080 cells with 20 µg of total cell lysates. Hsp90 α serves as a loading control. The blot was incubated with anti-ring finger protein 2 antibody (Cat#63391, 1:5,000) and HRP-conjugated goat anti-rabbit secondary antibody (Cat#201, 1:20,000) respectively. Image was developed using FeQ™ ECL Substrate Kit (Cat#226).

### SUPPORT

SUPPORT@GENUINBIOTECH.COM  
TEL: +1-540-855-7041

### ORDERS

SALES@GENUINBIOTECH.COM  
FAX: +1-540-855-7041

[WWW.GENUINBIOTECH.COM](http://WWW.GENUINBIOTECH.COM)