

# KD-Validated Anti-AP3M1 Rabbit Monoclonal Antibody



**Catalog #: 63402**

## Aliases

AP3M1; Adaptor Related Protein Complex 3 Subunit Mu 1; Adaptor Related Protein Complex 3 Mu 1 Subunit; AP-3 Complex Subunit Mu-1; Mu-Adaptin 3A; Mu3A-Adaptin; Adapter-Related Protein Complex 3 Mu-1 Subunit; Adaptor-Related Protein Complex 3 Subunit Mu-1; Clathrin Adaptor Complex AP3, Mu-3A Subunit; AP-3 Adapter Complex Mu3A Subunit; AP-3 Adaptor Complex Mu3A Subunit

## Background

Gene Name: AP3M1

NCBI Gene Entry: [26985](#)

UniProt Entry: [Q9Y2T2](#)

## Application Information

Molecular Weight: Predicted, 47 kDa, observed, 43 kDa

Clonality: Rabbit monoclonal antibody

Clone ID: 24GB6160

Species Reactivity: Human, mouse, rat

Applications Tested: Western blotting (WB)

## Immunogen

A synthesized peptide derived from human AP3M1

## Isotype

Rabbit IgG

## Storage Buffer

Supplied in PBS (pH 7.4) containing 50% glycerol, and 0.02% sodium azide.

## Storage

Store at -20 °C for one year.

## Recommended Dilutions

Western Blotting (WB): 1:1,000-1:5,000

**Note:** This product is for research use only.

---

### SUPPORT

SUPPORT@GENUINBIOTECH.COM  
TEL: +1-540-855-7041

### ORDERS

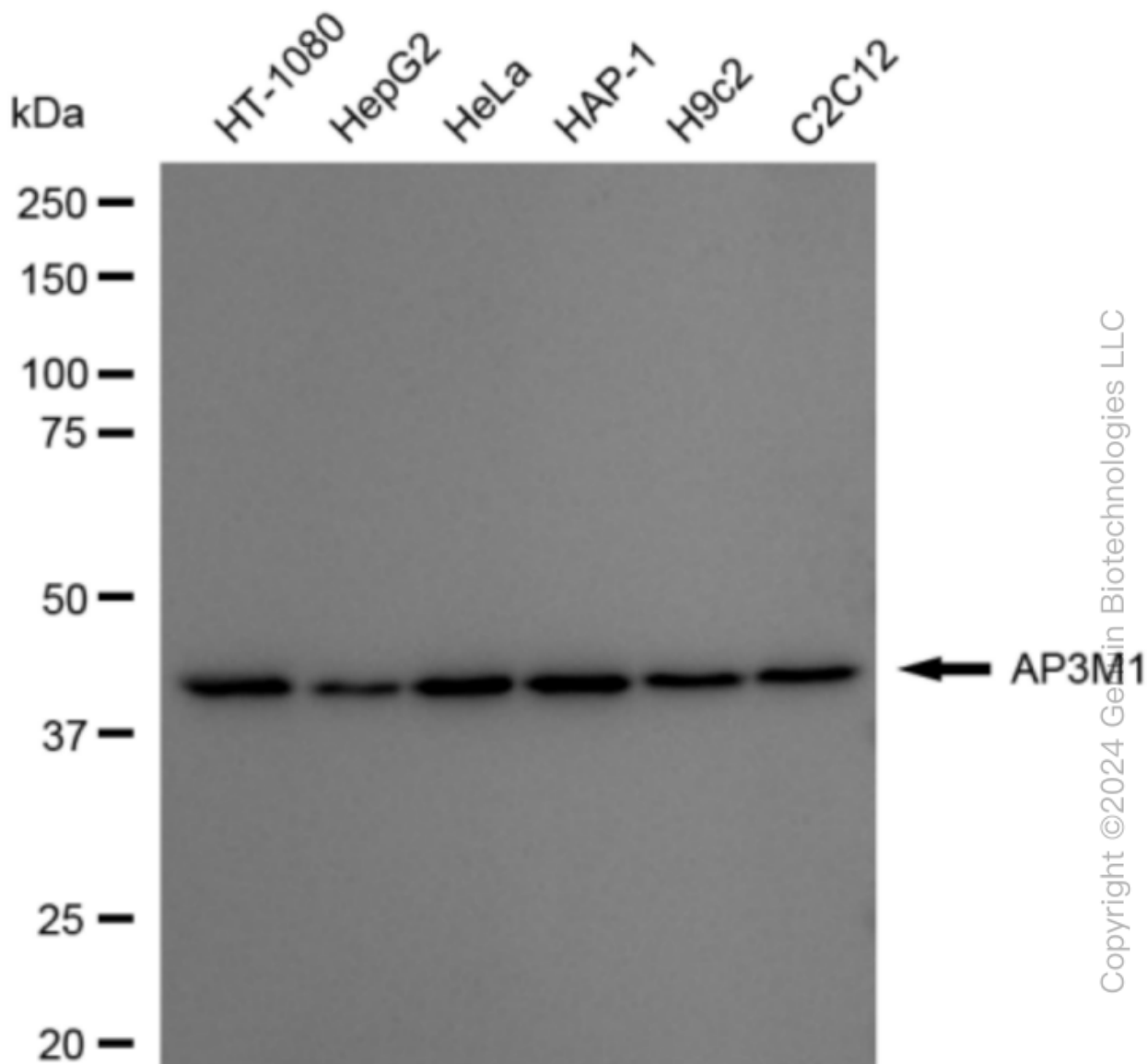
SALES@GENUINBIOTECH.COM  
FAX: +1-540-855-7041

[WWW.GENUINBIOTECH.COM](http://WWW.GENUINBIOTECH.COM)

# KD-Validated Anti-AP3M1 Rabbit Monoclonal Antibody

PAGE 2

## Validation Data



Western blotting analysis using anti-AP3M1 antibody (Cat#63402). Total cell lysates (30 µg) from various cell lines were loaded and separated by SDS-PAGE. The blot was incubated with anti-AP3M1 antibody (Cat#63402, 1:5,000) and HRP-conjugated goat anti-rabbit secondary antibody (Cat#201, 1:20,000) respectively. Image was developed using FeQ™ ECL Substrate Kit (Cat#226).

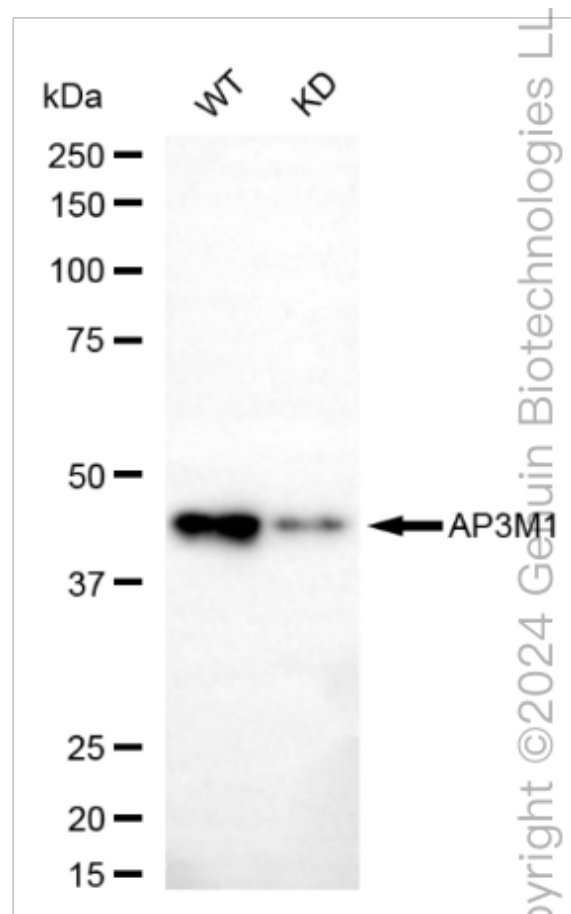
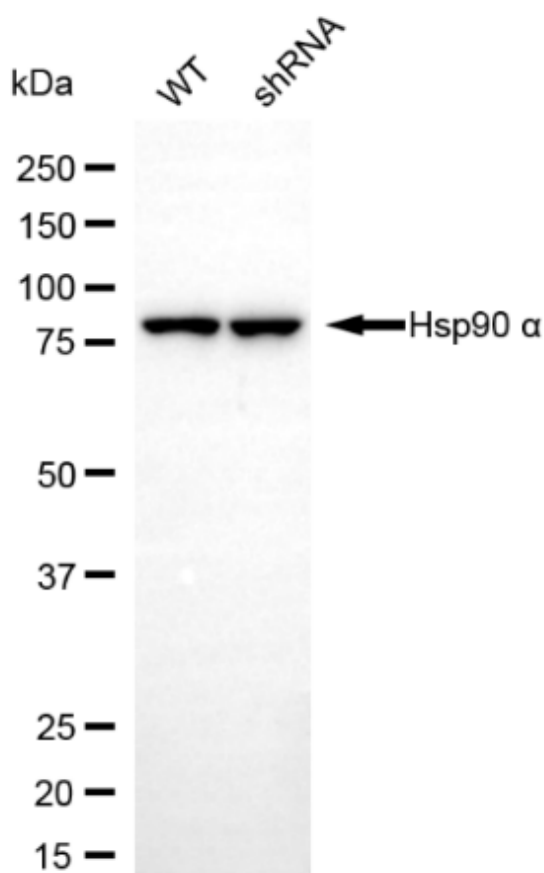
### SUPPORT

SUPPORT@GENUINBIOTECH.COM  
TEL: +1-540-855-7041

### ORDERS

SALES@GENUINBIOTECH.COM  
FAX: +1-540-855-7041

[WWW.GENUINBIOTECH.COM](http://WWW.GENUINBIOTECH.COM)



Western blotting analysis using anti-AP3M1 antibody (Cat#63402). AP3M1 expression in wild-type (WT) and AP3M1 shRNA knockdown (KD) HeLa cells with 20 µg of total cell lysates. Hsp90 α serves as a loading control. The blot was incubated with anti-AP3M1 antibody (Cat#63402, 1:5,000) and HRP-conjugated goat anti-rabbit secondary antibody (Cat#201, 1:20,000) respectively. Image was developed using NaQ™ ECL Substrate Kit(Cat#716).