

KD-Validated Anti-STAT3 Mouse Monoclonal Antibody



Catalog #: 63413

Aliases

STAT3; Signal Transducer And Activator Of Transcription 3; APRF; Acute-Phase Response Factor; Signal Transducer And Activator Of Transcription 3 (Acute-Phase Response Factor); DNA-Binding Protein APRF; ADMIO1; ADMIO; HIES

Background

Gene Name: STAT3

NCBI Gene Entry: [6774](#)

UniProt Entry: [P40763](#)

Application Information

Molecular Weight: Predicted, 88 kDa, observed, 79 kDa

Clonality: Mouse monoclonal antibody

Clone ID: 24GB5510

Species Reactivity: Human, mouse, rat

Applications Tested: Western blotting (WB), flow cytometry (FCM), immunocytochemistry (IC)

Immunogen

Recombinant protein of human stat3

Isotype

Mouse IgG1

Storage Buffer

Supplied in PBS (pH 7.4) containing 50% glycerol, and 0.02% sodium azide.

Storage

Store at -20 °C for one year.

Recommended Dilutions

Western Blotting (WB): 1:2,500-1:5,000

Immunocytochemistry (IC): 1:100-1:1,000

Flow Cytometry (FCM) : 1:2,000

Note: This product is for research use only.

SUPPORT

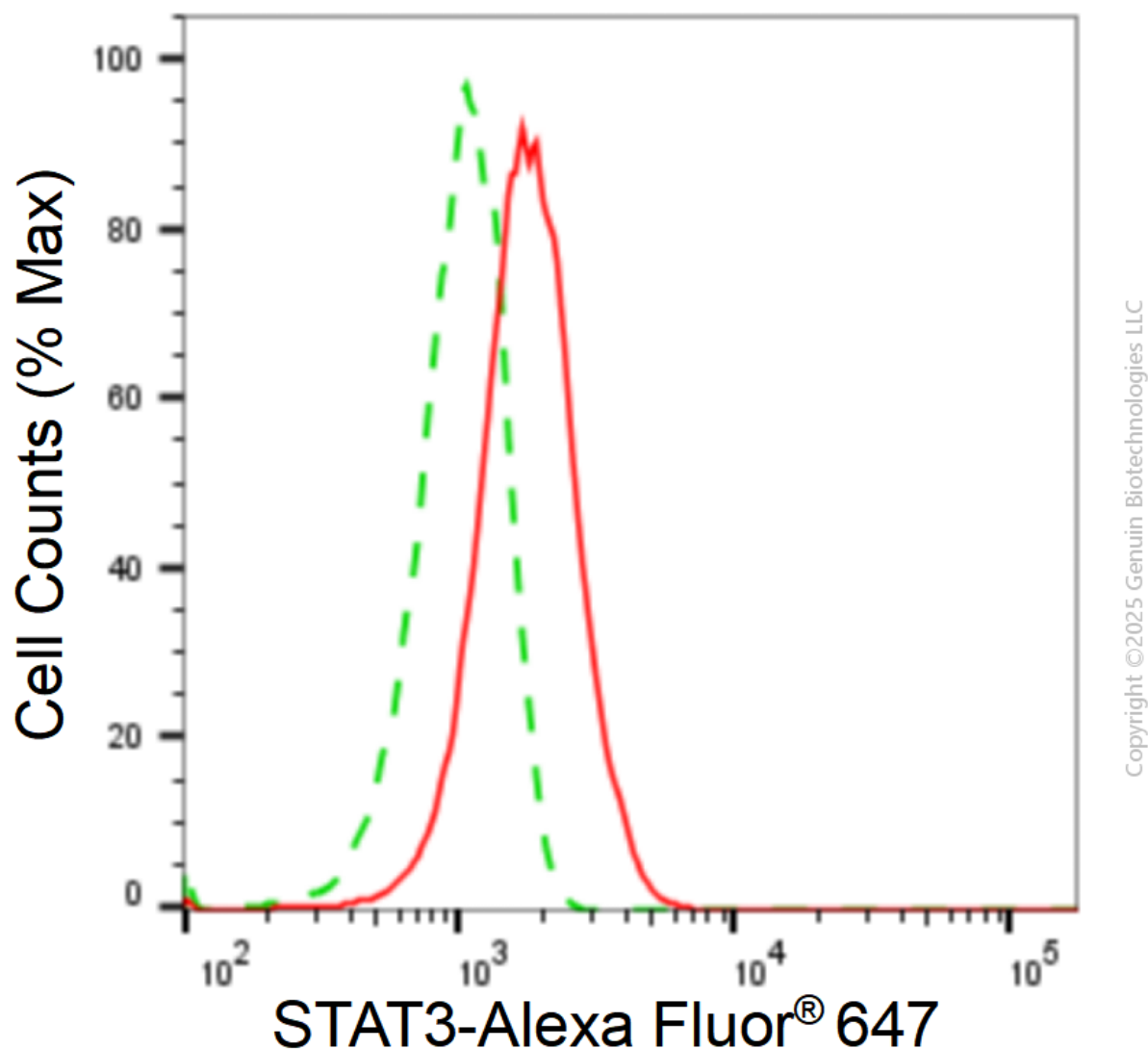
SUPPORT@GENUINBIOTECH.COM
TEL: +1-540-855-7041

ORDERS

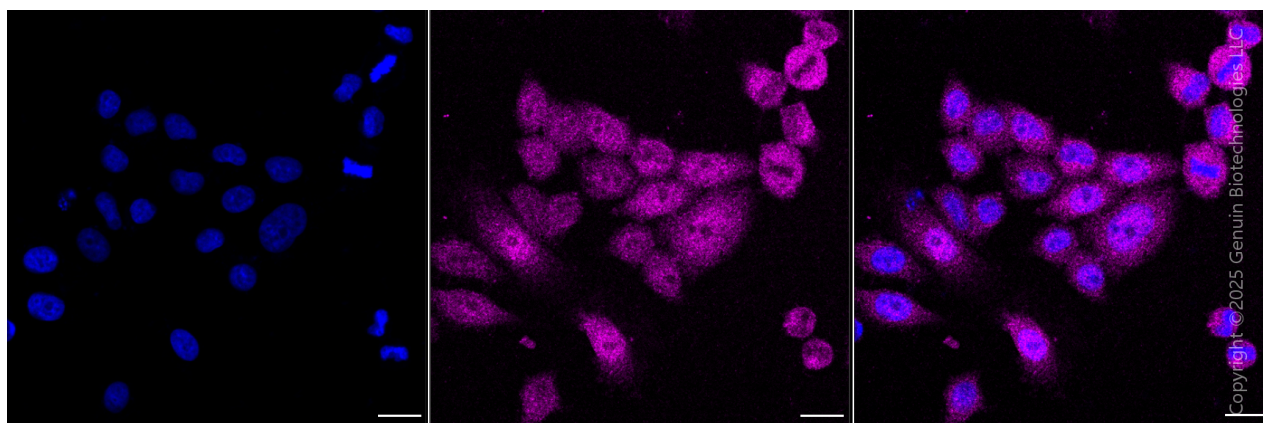
SALES@GENUINBIOTECH.COM
FAX: +1-540-855-7041

WWW.GENUINBIOTECH.COM

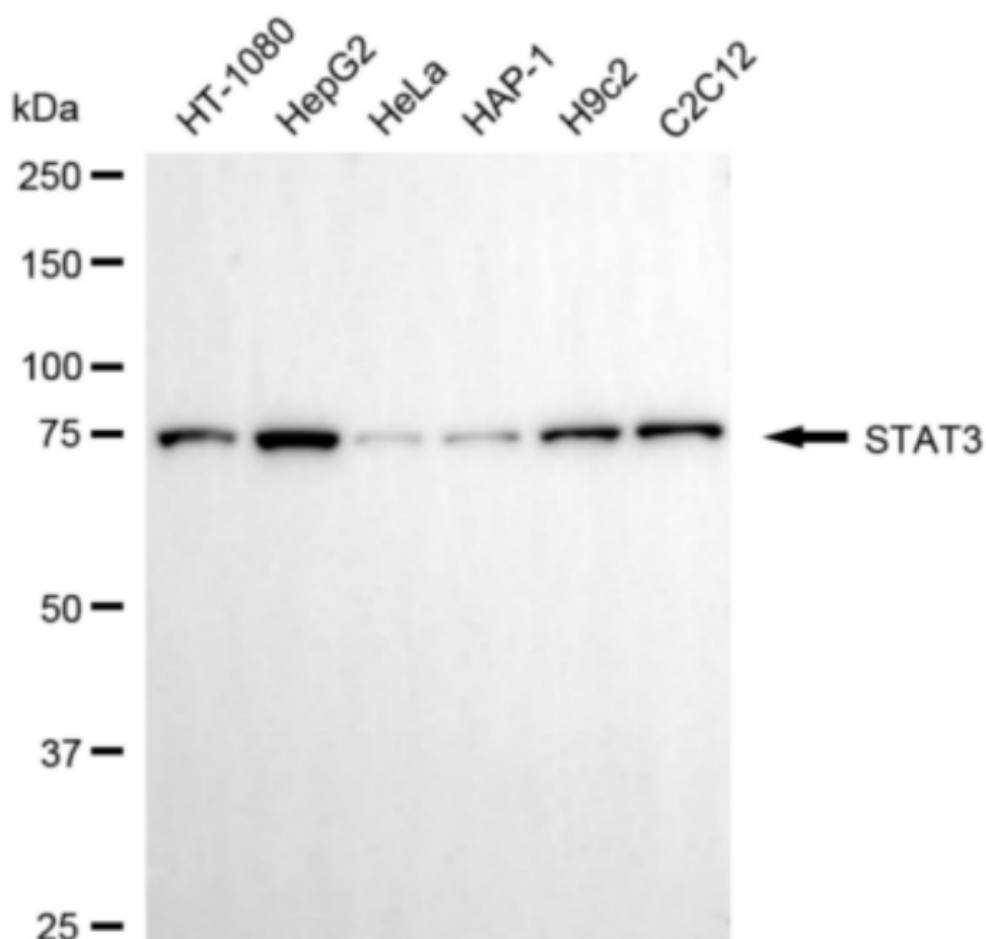
Validation Data



Flow cytometric analysis of STAT3 expression in HepG2 cells using anti-STAT3 antibody (Cat#63413, 1:2,000). Green, isotype control; red, STAT3.



Immunocytochemical staining of HepG2 cells with anti-STAT3 antibody (Cat#63413, 1:1,000). Nuclei were stained blue with DAPI; STAT3 was stained magenta with Alexa Fluor® 647. Images were taken using Leica stellaris 5. Protein abundance based on laser Intensity and Smart Gain □ Medium. Scale bar, 20 μ m.

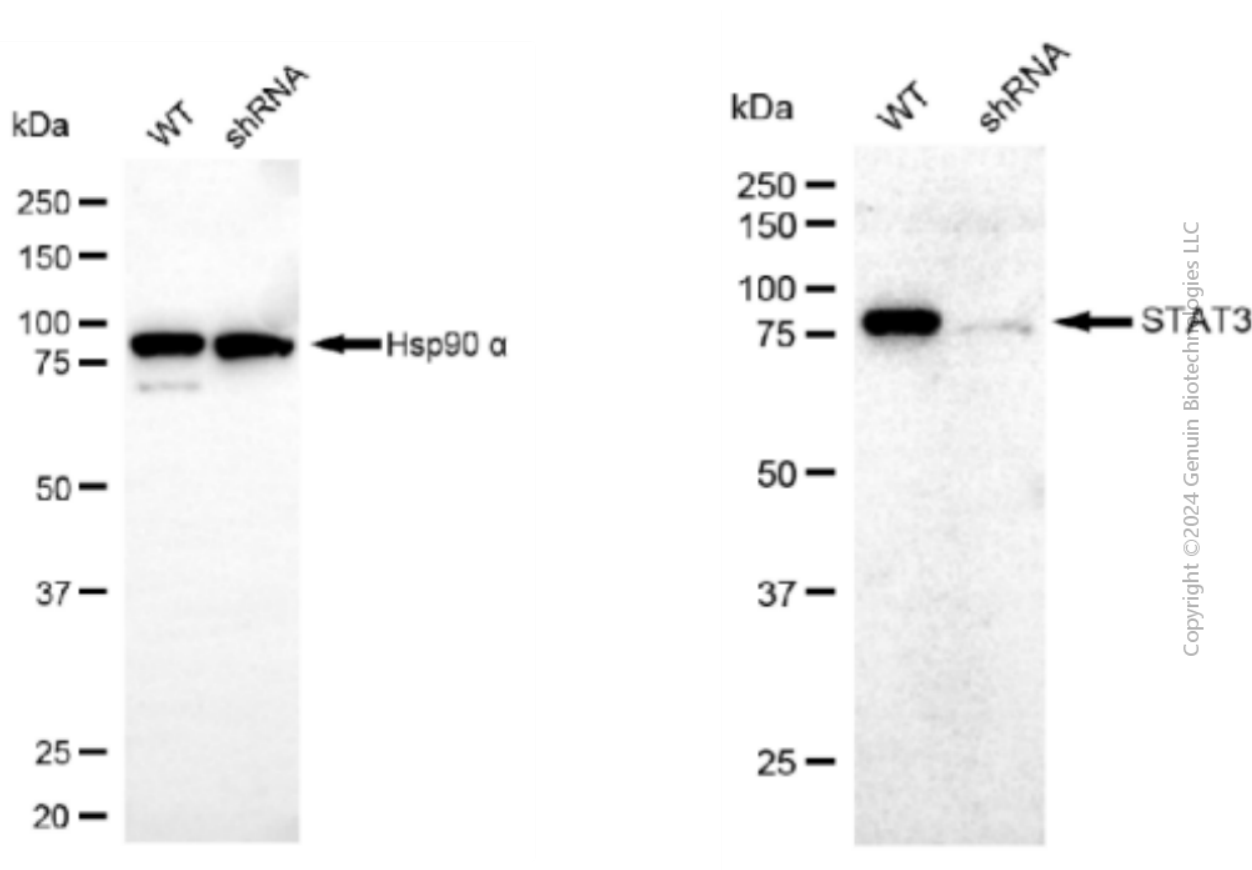


Western blotting analysis using anti-STAT3 antibody (Cat#63413). Total cell lysates (30 μ g) from various cell lines were loaded and separated by SDS-PAGE. The blot was incubated with anti-

KD-Validated Anti-STAT3 Mouse Monoclonal Antibody

PAGE 4

STAT3 antibody (Cat#63413, 1:5,000) and HRP-conjugated goat anti-mouse secondary antibody (Cat#101, 1:20,000) respectively. Image was developed using NaQ™ ECL Substrate Kit(Cat#716). STAT3, signal transducer and activator of transcription 3.



Western blotting analysis using anti-STAT3 antibody (Cat#63413). STAT3 expression in wild type (WT) and STAT3 shRNA knockdown (KD) HeLa cells with 20 µg of total cell lysates. β-Tubulin serves as a loading control. The blot was incubated with anti-STAT3 antibody (Cat#63413, 1:5,000) and HRP-conjugated goat anti-mouse secondary antibody (Cat#101, 1:20,000) respectively. Image was developed using FeQ™ ECL Substrate Kit (Cat#226).

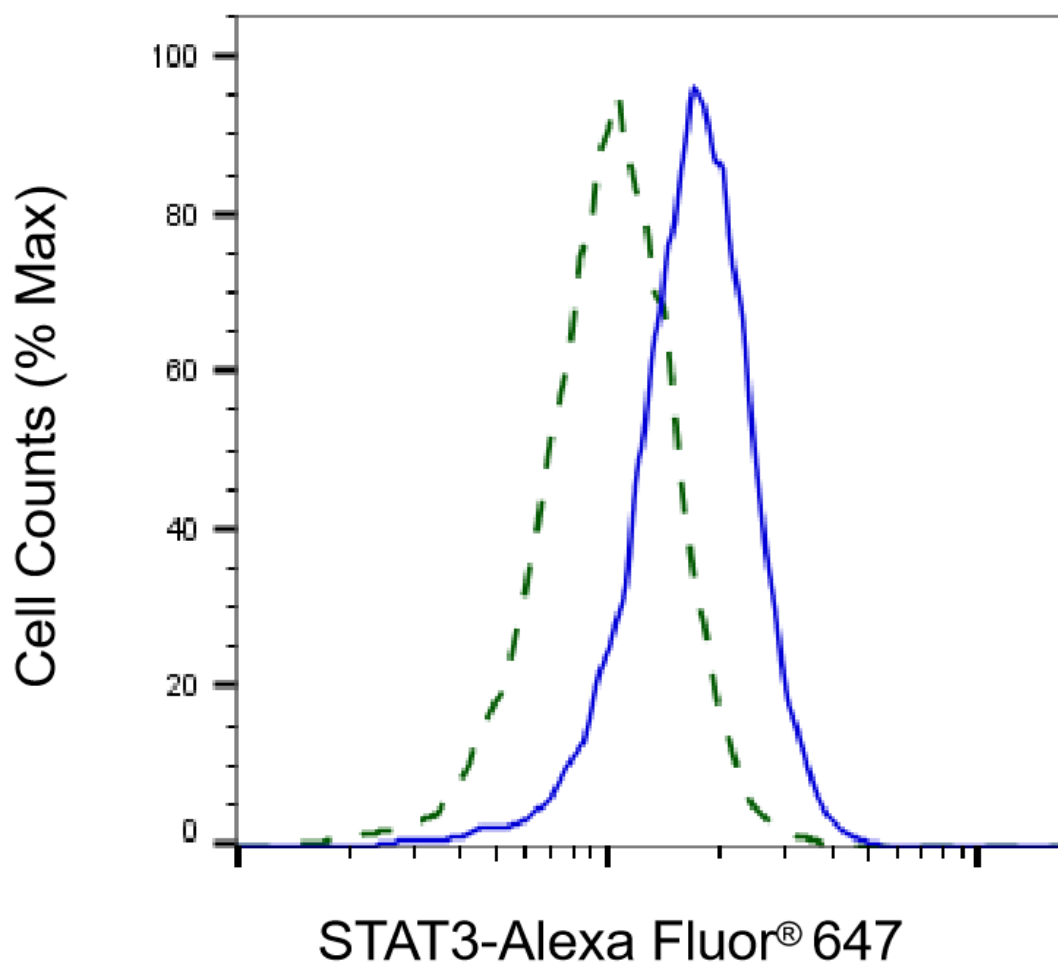
SUPPORT

SUPPORT@GENUINBIOTECH.COM
TEL: +1-540-855-7041

ORDERS

SALES@GENUINBIOTECH.COM
FAX: +1-540-855-7041

WWW.GENUINBIOTECH.COM



Copyright ©2025 Genuin Biotechnologies LLC

Validation of STAT3 knockdown using flow cytometry. Wild-type(WT, Blue) and knockdown(KD, Green) HeLa cells were stained with anti-STAT3 antibody (Cat#63413, 1:2,000) and analyzed using BD flow cytometer.