

KD-Validated Anti-Leukotriene A4 Hydrolase Mouse Monoclonal Antibody



Catalog #: 63419

Aliases

Leukotriene A4 Hydrolase; Tripeptide Aminopeptidase LTA4H; Leukotriene A-4 Hydrolase; LTA-4 Hydrolase; Testicular Secretory Protein Li 27; Leukotriene A(4) Hydrolase; EC 3.4.11.4; EC 3.3.2.6; LTA4

Background

Gene Name: LTA4H

NCBI Gene Entry: [4048](#)

UniProt Entry: [P09960](#)

Application Information

Molecular Weight: Predicted, 69 kDa, observed, 69 kDa

Clonality: Mouse monoclonal antibody

Clone ID: 24GB5540

Species Reactivity: Human, mouse, rat

Applications Tested: Western blotting (WB), flow cytometry (FCM), immunocytochemistry (IC)

Immunogen

Recombinant protein of human LTA4H

Isotype

Mouse IgG2b

Storage Buffer

Supplied in PBS (pH 7.4) containing 50% glycerol, and 0.02% sodium azide.

Storage

Store at -20 °C for one year.

Recommended Dilutions

Western Blotting (WB): 1:2,500-1:5,000

Flow Cytometry (FCM): 1:2,000

Immunocytochemistry (IC): 1:100-1:1,000

Note: This product is for research use only.

SUPPORT

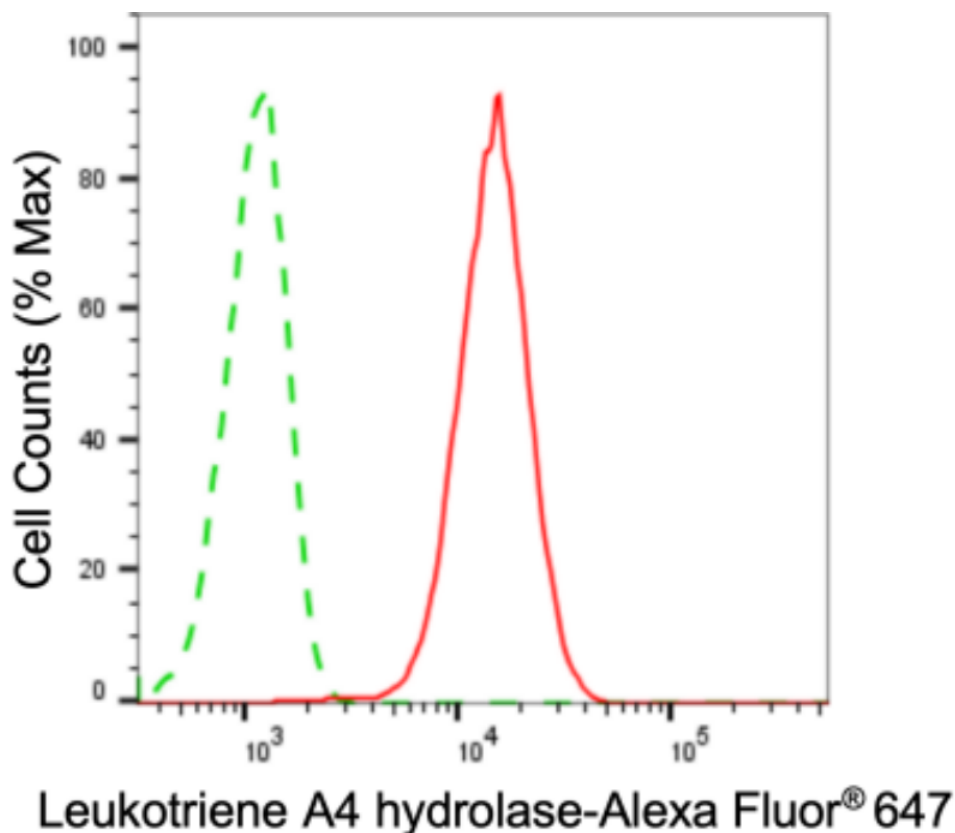
SUPPORT@GENUINBIOTECH.COM
TEL: +1-540-855-7041

ORDERS

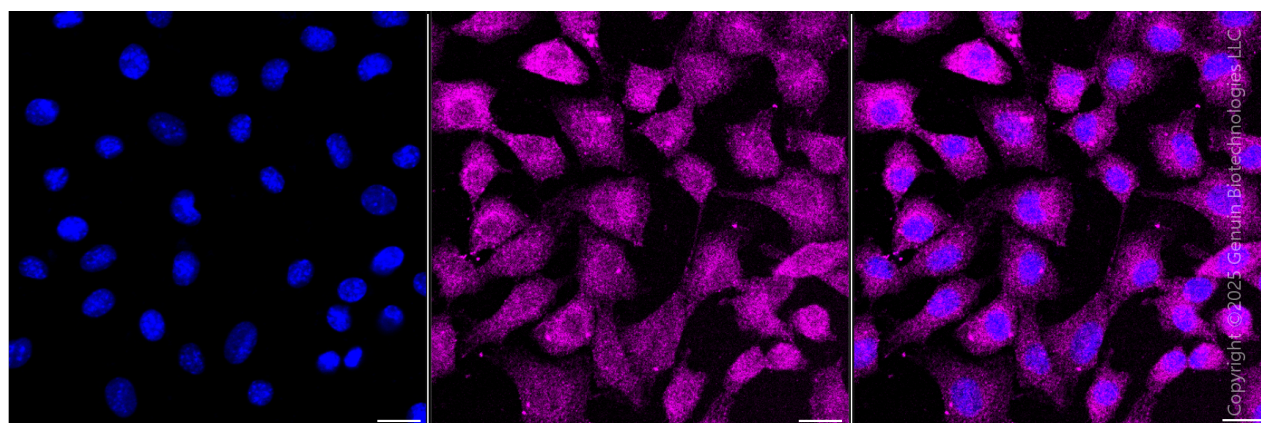
SALES@GENUINBIOTECH.COM
FAX: +1-540-855-7041

WWW.GENUINBIOTECH.COM

Validation Data



Copyright ©2024 Genuin Biotechnologies LLC



Copyright ©2025 Genuin Biotechnologies LLC

SUPPORT

SUPPORT@GENUINBIOTECH.COM
TEL: +1-540-855-7041

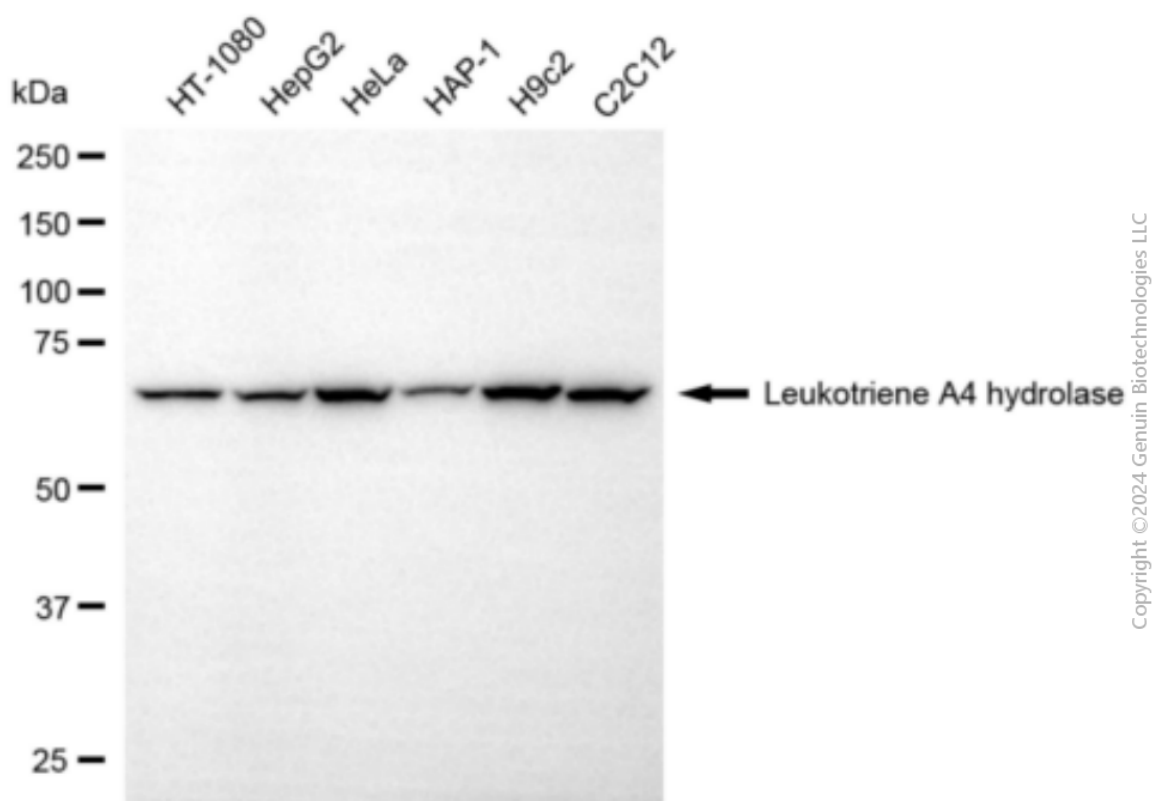
ORDERS

SALES@GENUINBIOTECH.COM
FAX: +1-540-855-7041

WWW.GENUINBIOTECH.COM

KD-Validated Anti-Leukotriene A4 Hydrolase Mouse Monoclonal Antibody

PAGE 3



Western blotting analysis using anti-leukotriene A4 hydrolase antibody (Cat#63419). Total cell lysates (30 μ g) from various cell lines were loaded and separated by SDS-PAGE. The blot was incubated with anti-leukotriene A4 hydrolase antibody (Cat#63419, 1:5,000) and HRP-conjugated goat anti-mouse secondary antibody (Cat#101, 1:20,000) respectively. Image was developed using NaQ™ ECL Substrate Kit(Cat#716).

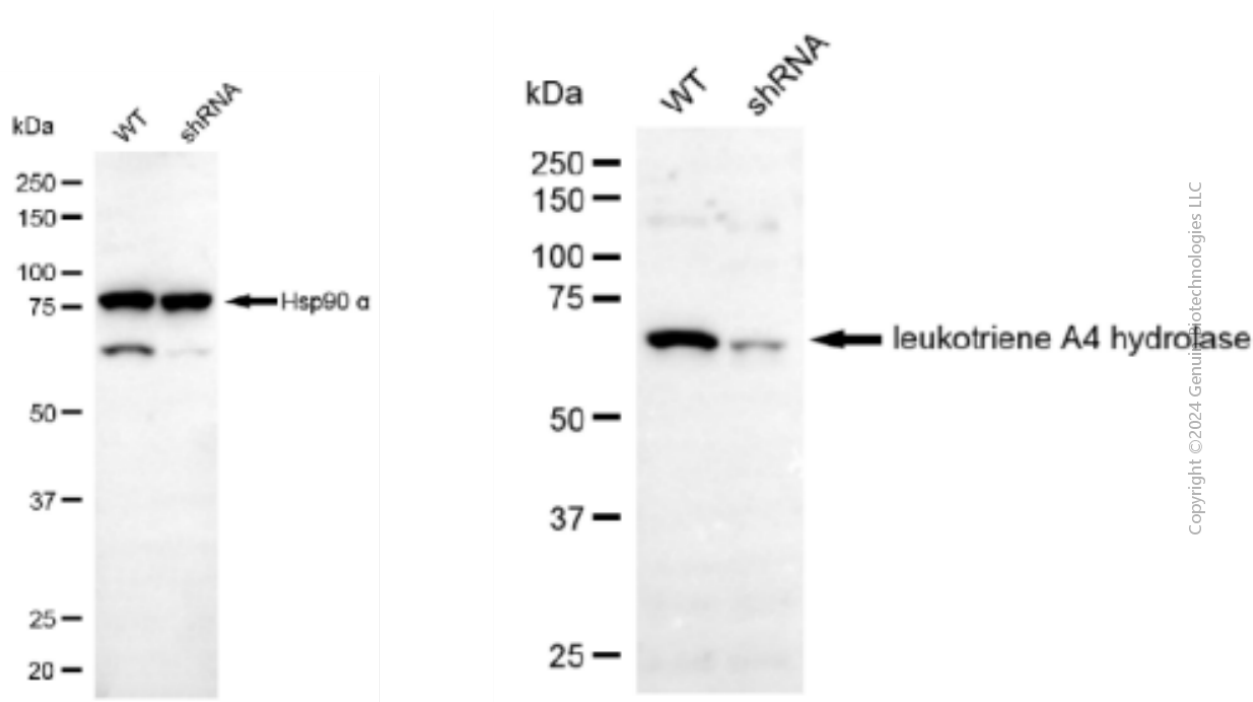
SUPPORT

SUPPORT@GENUINBIOTECH.COM
TEL: +1-540-855-7041

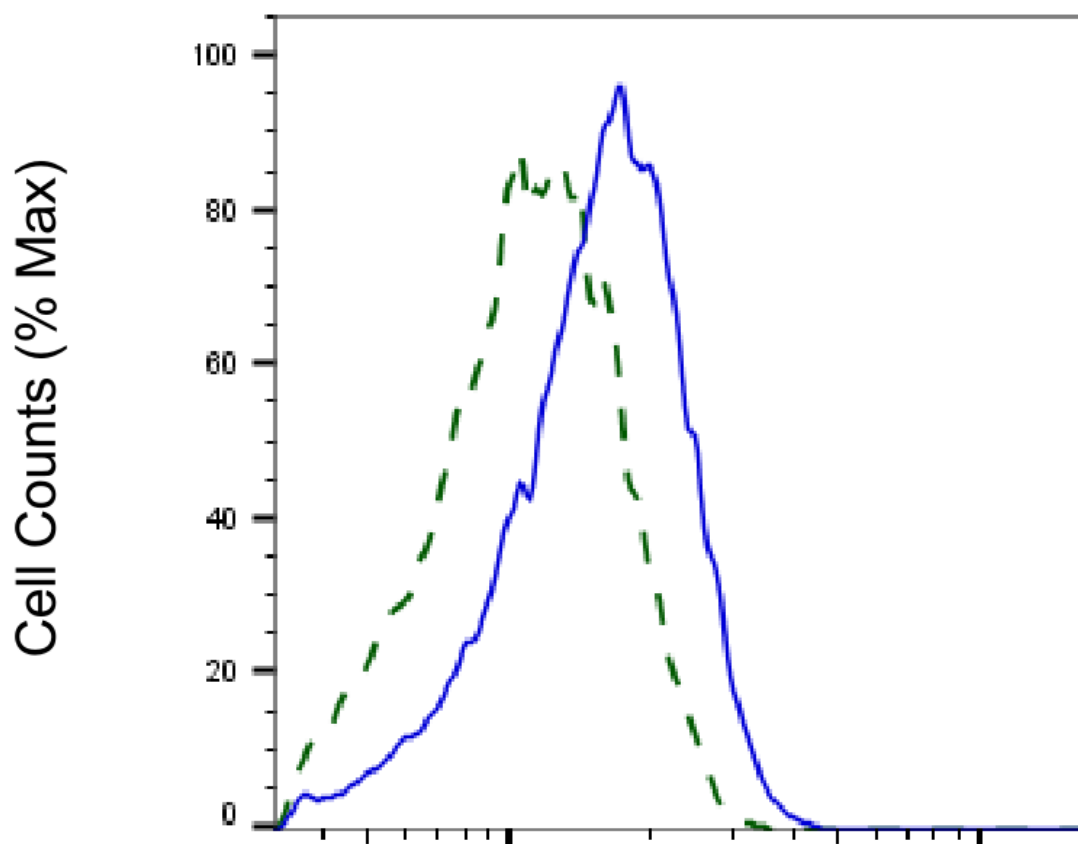
ORDERS

SALES@GENUINBIOTECH.COM
FAX: +1-540-855-7041

WWW.GENUINBIOTECH.COM



Western blotting analysis using anti-leukotriene A4 hydrolase antibody (Cat#63419). Leukotriene A4 hydrolase expression in wild type (WT) and leukotriene A4 hydrolase (LTA4H) shRNA knockdown (KD) HeLa cells with 20 μ g of total cell lysates. Hsp90 α serves as a loading control. The blot was incubated with anti-leukotriene A4 hydrolase antibody (Cat#63419, 1:5,000) and HRP-conjugated goat anti-mouse secondary antibody (Cat#101, 1:20,000) respectively. Image was developed using NaQ™ ECL Substrate Kit (Cat#716).



Copyright ©2025 Genuin Biotechnologies LLC

Leukotriene A4 hydrolase-Alexa Fluor® 647

Validation of Leukotriene A4 hydrolase knockdown using flow cytometry. Wild-type(WT, Blue) and knockdown(KD, Green) HeLa cells were stained with anti-Leukotriene A4 hydrolase antibody (Cat#63419, 1:2,000) and analyzed using BD flow cytometer.