

KD-Validated Anti-Basigin (Ok Blood Group) Mouse Monoclonal Antibody



Catalog #: 63423

Aliases

BSG; Basigin (Ok Blood Group); EMMPRIN; Tumor Cell-Derived Collagenase Stimulatory Factor; Extracellular Matrix Metalloproteinase Inducer; Basigin; EMPRIN; CD147; Leukocyte Activation Antigen M6; Collagenase Stimulatory Factor; Hepatoma-Associated Antigen; OK Blood Group Antigen; HAntibody18G; TCSF; 5F; Ok Blood Group; CD147 Antigen

Background

Gene Name: BSG

NCBI Gene Entry: [682](#)

UniProt Entry: [P35613](#)

Application Information

Molecular Weight: Predicted, 42 kDa; observed, 35-70 kDa

Clonality: Mouse monoclonal antibody

Clone ID: 24GB5555

Species Reactivity: Human

Applications Tested: Western blotting (WB), flow cytometry (FCM), immunocytochemistry (IC)

Immunogen

Recombinant protein of human BSG

Isotype

Mouse IgG2b

Storage Buffer

Supplied in PBS (pH 7.4) containing 50% glycerol, and 0.02% sodium azide.

Storage

Store at -20 °C for one year.

Recommended Dilutions

Western Blotting (WB): 1:1,000-1:5,000

Flow Cytometry (FCM): 1:2,000

Immunocytochemistry (IC): 1:100-1:1,000

SUPPORT

SUPPORT@GENUINBIOTECH.COM
TEL: +1-540-855-7041

ORDERS

SALES@GENUINBIOTECH.COM
FAX: +1-540-855-7041

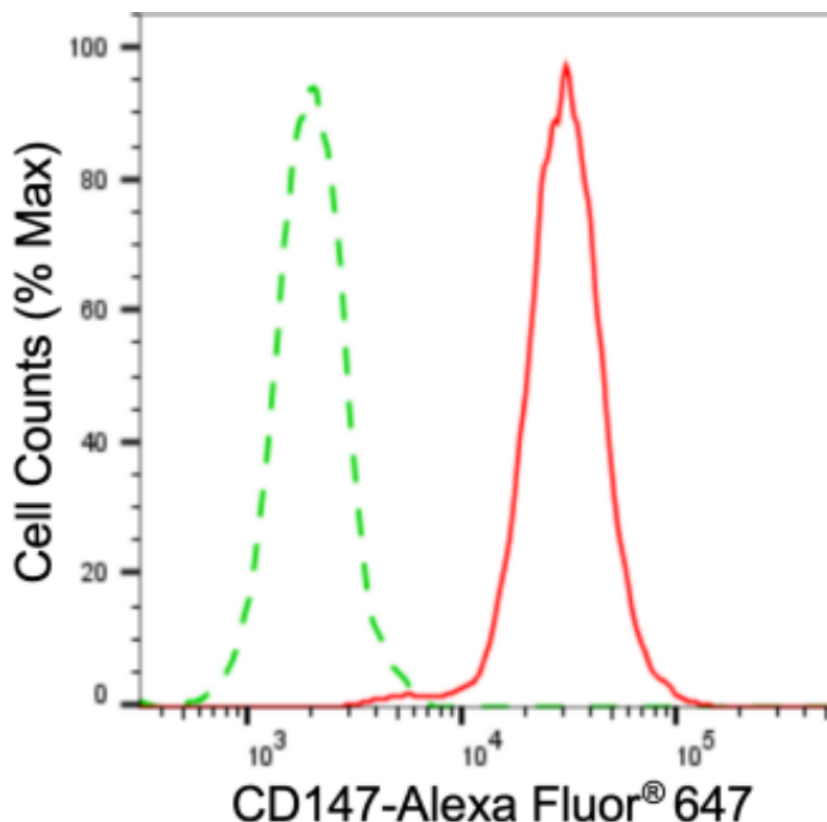
WWW.GENUINBIOTECH.COM

KD-Validated Anti-Basigin (Ok Blood Group) Mouse Monoclonal Antibody

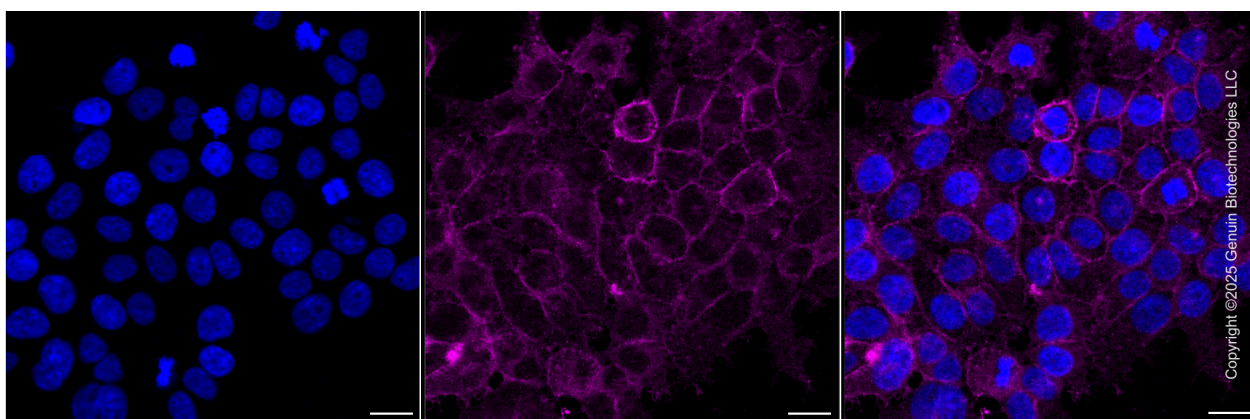
PAGE 2

Note: This product is for research use only.

Validation Data



Flow cytometric analysis of CD147 expression in HeLa cells using anti-CD147 antibody (Cat#63423, 1:2000). Green, isotype control; red, CD147.



Immunocytochemical staining of HeLa cells with anti-CD147 antibody (Cat#63423, 1:1,000) . Nuclei were stained blue with DAPI; CD147 was stained magenta with Alexa Fluor® 647. Images were taken using Leica stellaris 5. Protein abundance based on laser Intensity and Smart Gain □ Medium. Scale bar, 20 µm.

SUPPORT

SUPPORT@GENUINBIOTECH.COM
TEL: +1-540-855-7041

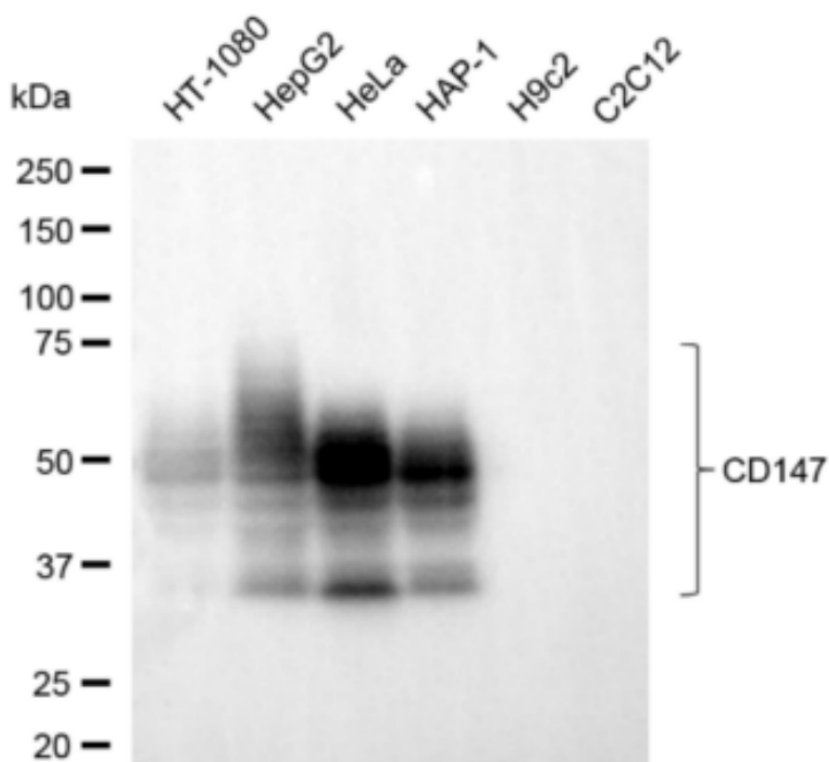
ORDERS

SALES@GENUINBIOTECH.COM
FAX: +1-540-855-7041

WWW.GENUINBIOTECH.COM

KD-Validated Anti-Basigin (Ok Blood Group) Mouse Monoclonal Antibody

PAGE 3



Copyright © 2024 Genuin Biotechnologies LLC

Western blotting analysis using anti-CD147 antibody (Cat#63423). Total cell lysates (30 µg) from various cell lines were loaded and separated by SDS-PAGE. The blot was incubated with anti-CD147 antibody (Cat#63423, 1:5,000) and HRP-conjugated goat anti-mouse secondary antibody (Cat#101, 1:20,000) respectively. Image was developed using NaQ™ ECL Substrate Kit (Cat#716).

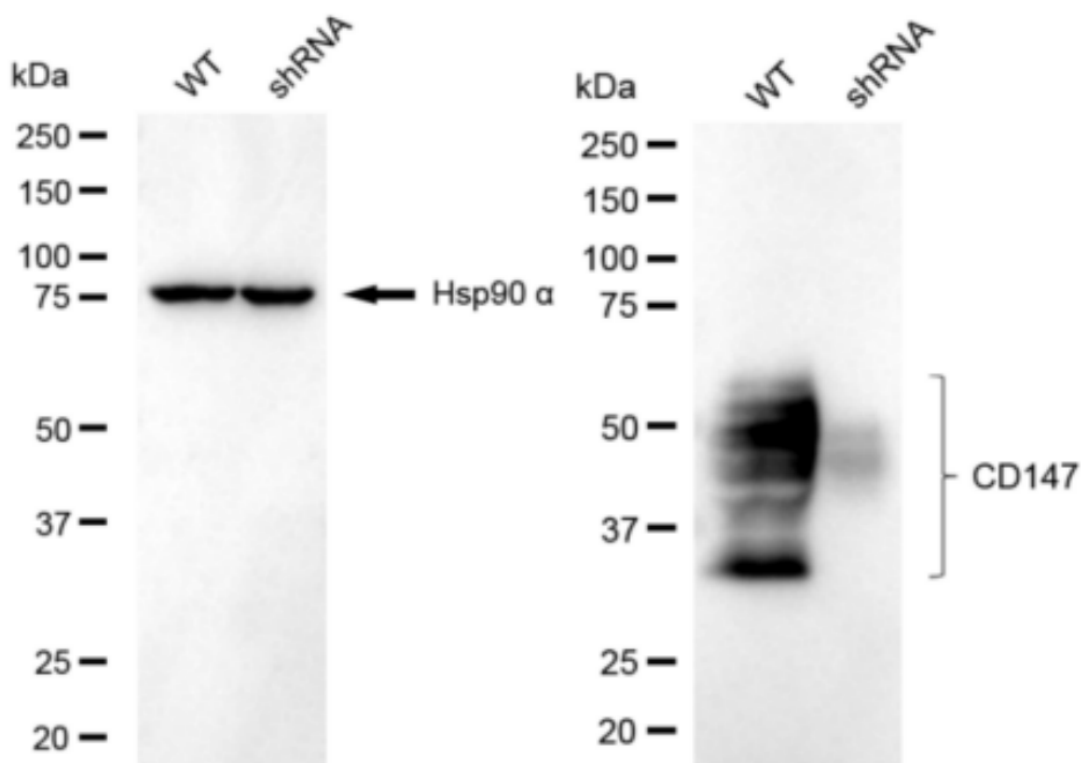
SUPPORT

SUPPORT@GENUINBIOTECH.COM
TEL: +1-540-855-7041

ORDERS

SALES@GENUINBIOTECH.COM
FAX: +1-540-855-7041

WWW.GENUINBIOTECH.COM



Copyright ©2024 Genuin Biotechnologies LLC

Western blotting analysis using anti-CD147 antibody (Cat#63423). CD147 expression in wild type (WT) and BSG shRNA knockdown (KD) HeLa cells with 20 µg of total cell lysates. Hsp90 α serves as a loading control. The blot was incubated with anti-CD147 antibody (Cat#63423, 1:5,000) and HRP-conjugated goat anti-mouse secondary antibody (Cat#101, 1:20,000) respectively. Image was developed using NaQ™ ECL Substrate Kit (Cat#716).