

Catalog #: 63424

Aliases

BMAL1; Basic Helix-Loop-Helix ARNT Like 1; BHLHe5; PASD3; MOP3; Brain And Muscle ARNT-Like 1; ARNTL1; ARNTL; JAP3; Aryl Hydrocarbon Receptor Nuclear Translocator-Like Protein 1; Aryl Hydrocarbon Receptor Nuclear Translocator Like; Basic Helix-Loop-Helix ARNT-Like Protein 1; Class E Basic Helix-Loop-Helix Protein 5; Basic Helix-Loop-Helix Family Member E5; Basic-Helix-Loop-Helix-PAS Protein MOP3; PAS Domain-Containing Protein 3; Member Of PAS Superfamily 3; PAS Domain Containing 3; Member Of PAS Protein 3; BHLH-PAS Protein JAP3; Mutant Basic Helix-Loop-Helix ARNT-Like Protein 1; Testis Tissue Sperm-Binding Protein Li 50e; Basic-Helix-Loop-Helix-PAS Orphan MOP3; ARNT-Like Protein 1, Brain And Muscle; BMAL1c; BHLHE5; TIC

Background

Gene Name: BMAL1

NCBI Gene Entry: [406](#)

UniProt Entry: [O00327](#)

Application Information

Molecular Weight: Predicted, 69 kDa; observed, 69 kDa

Clonality: Mouse monoclonal antibody

Clone ID: 24GB5560

Species Reactivity: Human, mouse, rat

Applications Tested: Western blotting (WB), flow cytometry (FCM), immunocytochemistry (IC)

Immunogen

Recombinant protein of human ARNTL

Isotype

Mouse IgG1

Storage Buffer

Supplied in PBS (pH 7.4) containing 50% glycerol, and 0.02% sodium azide.

Storage

Store at -20 °C for one year.

Recommended Dilutions

SUPPORT

SUPPORT@GENUINBIOTECH.COM
TEL: +1-540-855-7041

ORDERS

SALES@GENUINBIOTECH.COM
FAX: +1-540-855-7041

WWW.GENUINBIOTECH.COM

KD-Validated Anti-BMAL1 Mouse Monoclonal Antibody

PAGE 2

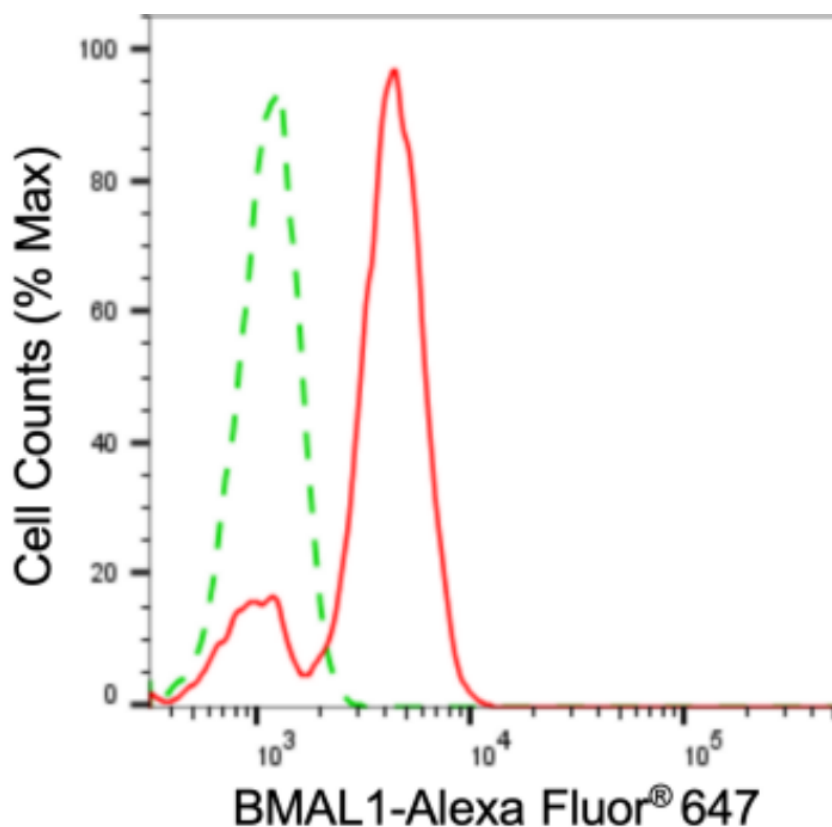
Western Blotting (WB): 1:500-1:2,500

Flow Cytometry (FCM): 1:2,000

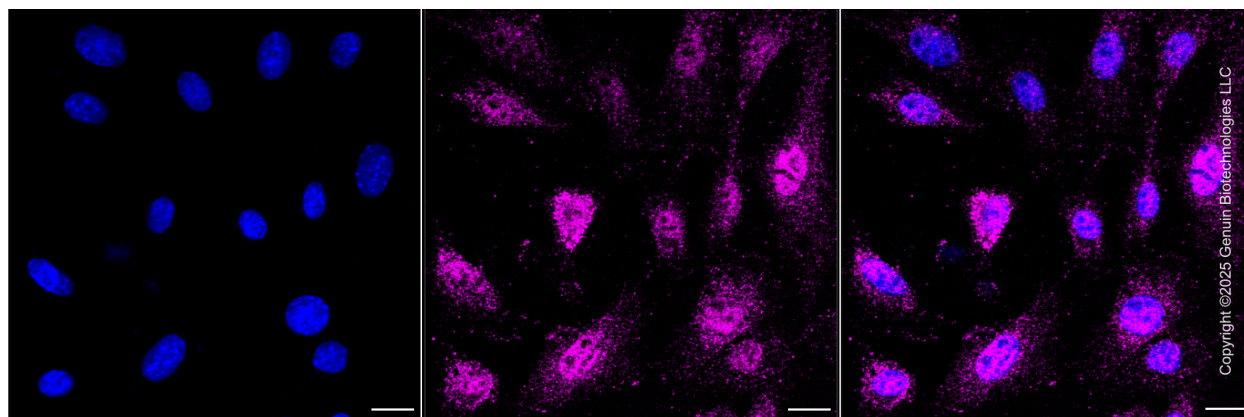
Immunocytochemistry (IC): 1:100-1:1,000

Note: This product is for research use only.

Validation Data



Flow cytometric analysis of BMAL1 expression in C2C12 cells using anti-BMAL1 antibody (Cat#63424, 1:2,000). Green, isotype control; red, BMAL1.



Immunocytochemical staining of C2C12 cells with anti-BMAL1 antibody (Cat#63424, 1:1,000) .

SUPPORT

SUPPORT@GENUINBIOTECH.COM
TEL: +1-540-855-7041

ORDERS

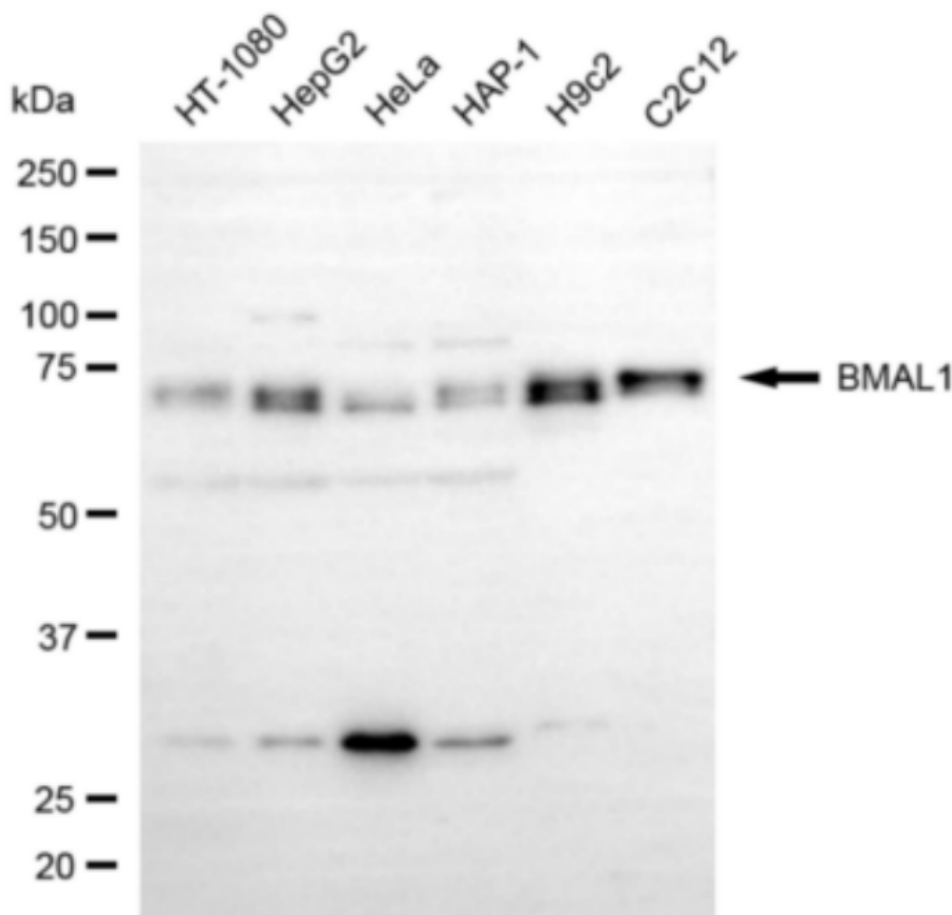
SALES@GENUINBIOTECH.COM
FAX: +1-540-855-7041

WWW.GENUINBIOTECH.COM

KD-Validated Anti-BMAL1 Mouse Monoclonal Antibody

PAGE 3

Nuclei were stained blue with DAPI; BMAL1 was stained magenta with Alexa Fluor® 647. Images were taken using Leica stellaris 5. Protein abundance based on laser Intensity and smart gain: Medium. Scale bar, 20 µm.



Copyright ©2024 Genuin Biotechnologies LLC

Western blotting analysis using anti-BMAL1 antibody (Cat#63424). Total cell lysates (30 µg) from various cell lines were loaded and separated by SDS-PAGE. The blot was incubated with anti-BMAL1 antibody (Cat#63424, 1:2,500) and HRP-conjugated goat anti-mouse secondary antibody (Cat#101, 1:20,000) respectively. Image was developed using FeQ™ ECL Substrate Kit (Cat#226).

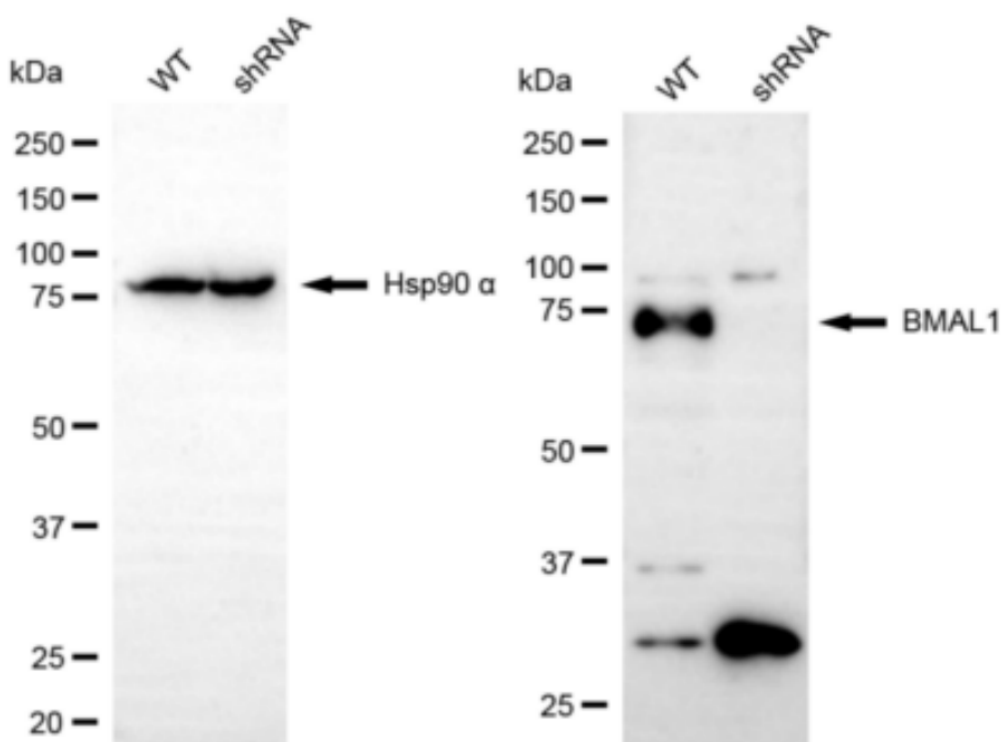
SUPPORT

SUPPORT@GENUINBIOTECH.COM
TEL: +1-540-855-7041

ORDERS

SALES@GENUINBIOTECH.COM
FAX: +1-540-855-7041

WWW.GENUINBIOTECH.COM



Western blotting analysis using anti-BMAL1 antibody (Cat#63424). BMAL1 expression in wild type (WT) and BMAL1 shRNA knockdown (KD) HeLa cells with 30 μ g of total cell lysates. Hsp90 α serves as a loading control. The blot was incubated with anti-BMAL1 antibody (Cat#63424, 1:2,500) and HRP-conjugated goat anti-mouse secondary antibody (Cat#101, 1:20,000) respectively. Image was developed using FeQ™ ECL Substrate Kit (Cat#226).