

KD-Validated Anti-L1 Cell Adhesion Molecule Mouse Monoclonal Antibody



Catalog #: 63425

Aliases

L1CAM; L1 Cell Adhesion Molecule; NCAM-L1; CAML1; Neural Cell Adhesion Molecule L1; CD171; MIC5; Antigen Identified By Monoclonal Antibody R1; N-CAM-L1; HSAS1; HSAS; MASA; SPG1; S10; CD171 Antigen; N-CAML1; HYCX

Background

Gene Name: L1CAM

NCBI Gene Entry: [3897](#)

UniProt Entry: [P32004](#)

Application Information

Molecular Weight: Predicted, 140 kDa; observed, 250 kDa

Clonality: Mouse monoclonal antibody

Clone ID: 24GB5565

Species Reactivity: Human

Applications Tested: Western blotting (WB), flow cytometry (FCM), immunocytochemistry (IC)

Immunogen

Recombinant protein of human L1CAM

Isotype

Mouse IgG2a

Storage Buffer

Supplied in PBS (pH 7.4) containing 50% glycerol, and 0.02% sodium azide.

Storage

Store at -20 °C for one year.

Recommended Dilutions

Western Blotting (WB): 1:500-1:2,500

Flow Cytometry (FCM): 1::200-1:2,000

Immunocytochemistry (IC): 1:100-1:1,000

Note: This product is for research use only.

SUPPORT

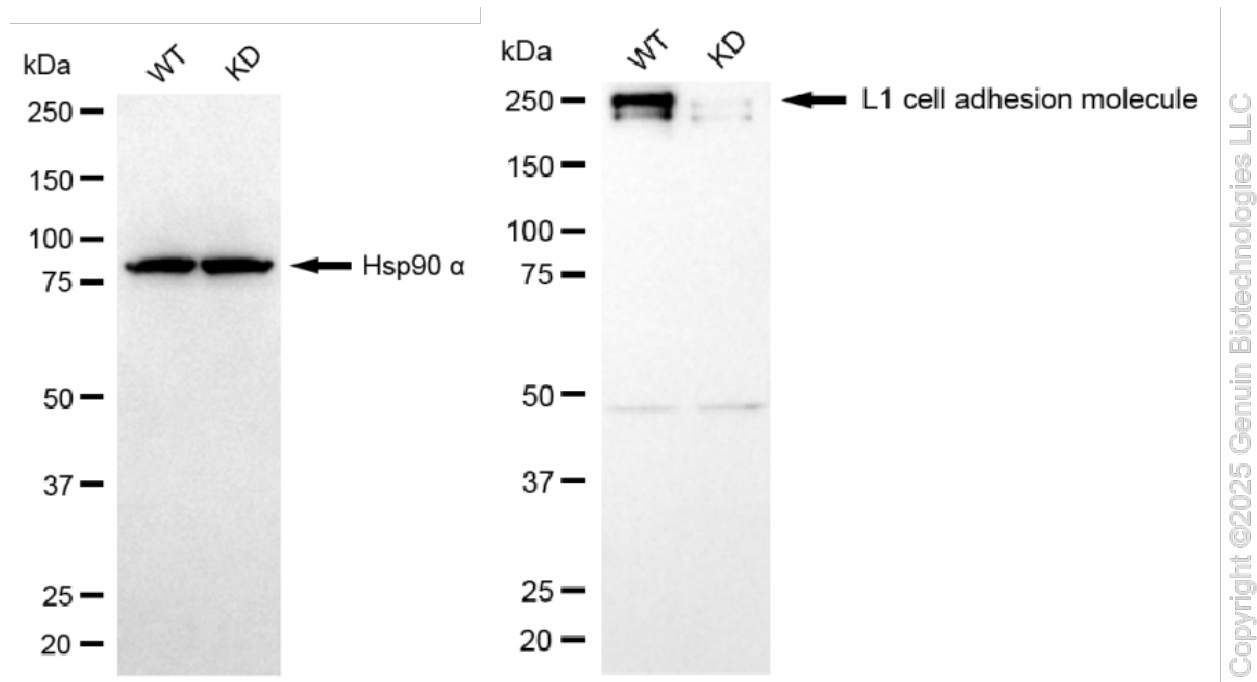
SUPPORT@GENUINBIOTECH.COM
TEL: +1-540-855-7041

ORDERS

SALES@GENUINBIOTECH.COM
FAX: +1-540-855-7041

WWW.GENUINBIOTECH.COM

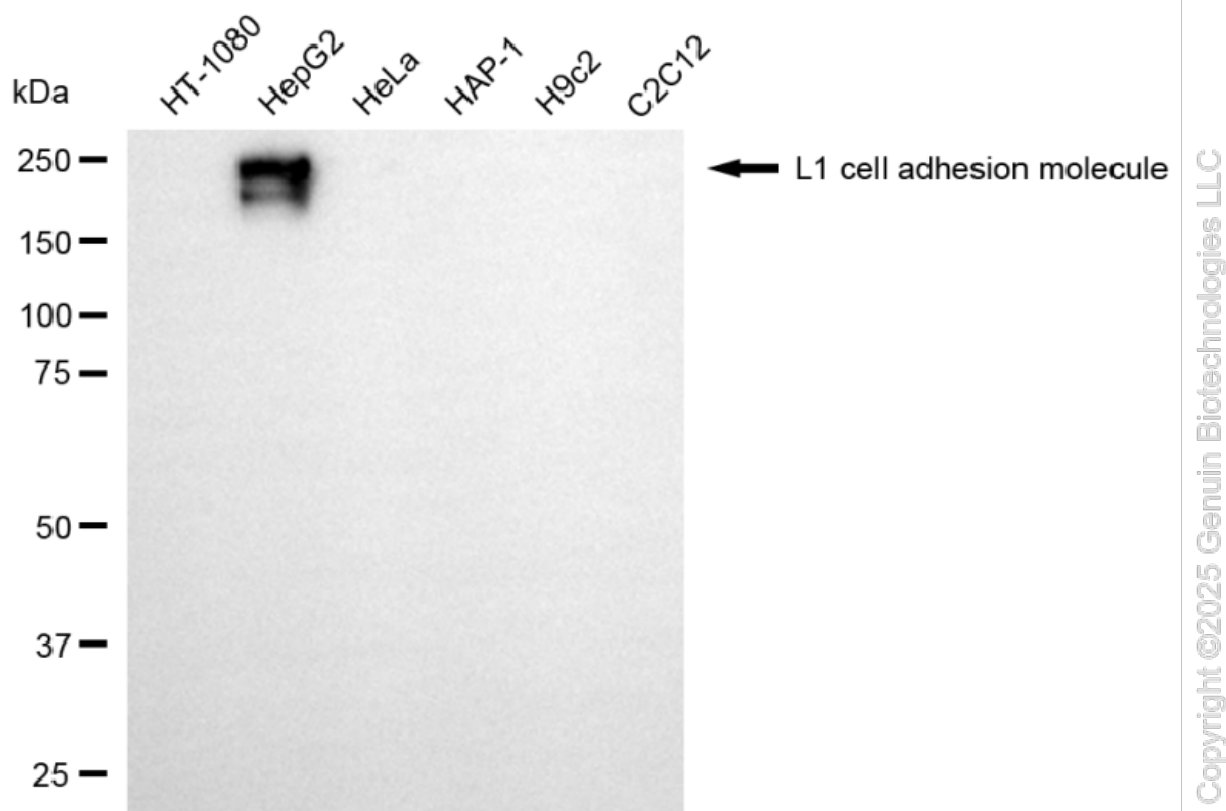
Validation Data



Western blotting analysis using anti-L1 cell adhesion molecule antibody (Cat#63425). L1 cell adhesion molecule expression in wild type (WT) and L1 cell adhesion molecule (L1CAM) knockdown (KD) HSHC cells with 20 µg of total cell lysates. Hsp90 α serves as a loading control. The blot was incubated with anti-L1 cell adhesion molecule antibody (Cat#63425, 1:2,500) and HRP-conjugated goat anti-mouse secondary antibody (Cat#101, 1:20,000) respectively. Image was developed using NaQ™ ECL Substrate Kit (Cat#716).

KD-Validated Anti-L1 Cell Adhesion Molecule Mouse Monoclonal Antibody

PAGE 3



Western blotting analysis using anti-L1 cell adhesion molecule antibody (Cat#63425). Total cell lysates (30 μ g) from various cell lines were loaded and separated by SDS-PAGE. The blot was incubated with anti-L1 cell adhesion molecule antibody (Cat#63425, 1:2,500) and HRP-conjugated goat anti-mouse secondary antibody (Cat#101, 1:20,000) respectively. Image was developed using NaQTM ECL Substrate Kit (Cat#716).

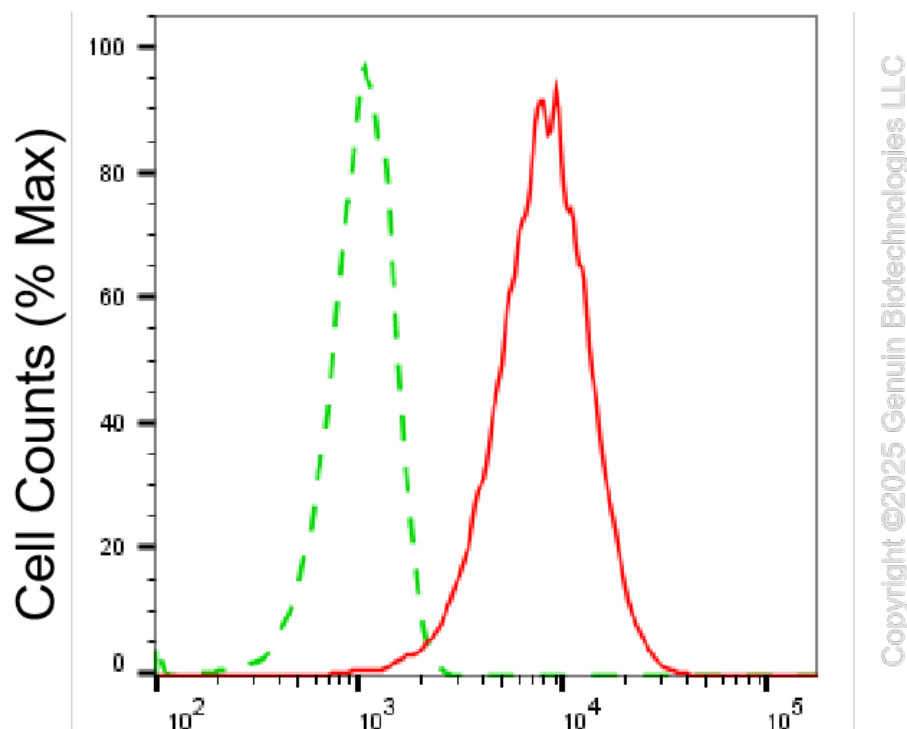
SUPPORT

SUPPORT@GENUINBIOTECH.COM
TEL: +1-540-855-7041

ORDERS

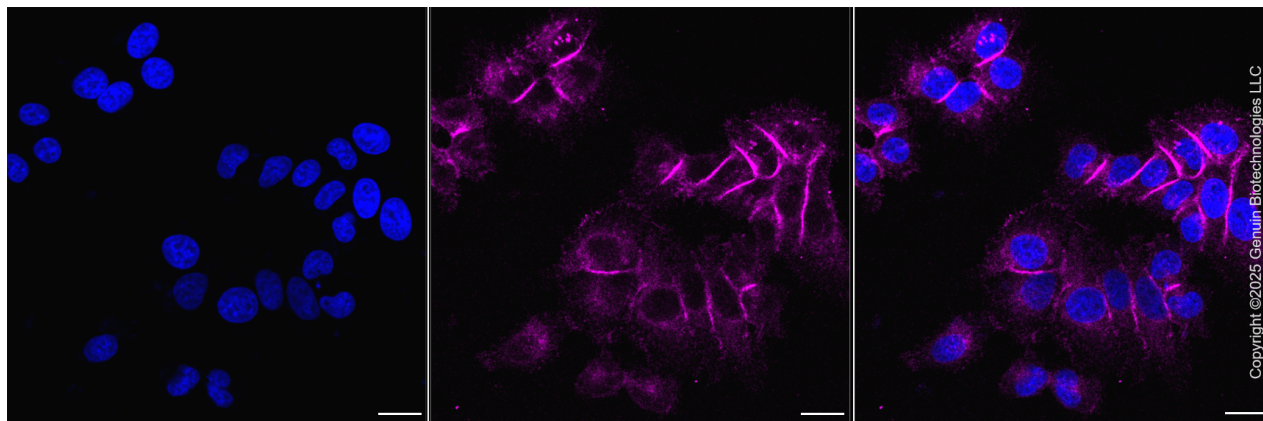
SALES@GENUINBIOTECH.COM
FAX: +1-540-855-7041

WWW.GENUINBIOTECH.COM



L1 cell adhesion molecule-Alexa Fluor® 647

Flow cytometric analysis of L1 cell adhesion molecule expression in HepG2 cells using anti-L1 cell adhesion molecule antibody (Cat#63425, 1:2,000). Green, isotype control; red, L1 cell adhesion molecule.



Immunocytochemical staining of HepG2 cells with anti-L1 cell adhesion molecule antibody (Cat#63425, 1:1,000). Nuclei were stained blue with DAPI; L1 cell adhesion molecule was stained magenta with Alexa Fluor® 647. Images were taken using Leica stellaris 5. Protein abundance based on laser Intensity and Smart Gain: Medium. Scale bar, 20 µm.