

KD-Validated Anti-Gephyrin Mouse Monoclonal Antibody



Catalog #: 63428

Aliases

GPHN; Gephyrin; KIAA1385; GPH; GEPH; GPHRYN; MOCODC; HKPX1

Background

Gene Name: GPHN

NCBI Gene Entry: [10243](#)

UniProt Entry: [Q9NQX3](#)

Application Information

Molecular Weight: Predicted, 80 kDa, observed, 80 kDa

Clonality: Mouse monoclonal antibody

Clone ID: 24GB5580

Species Reactivity: Human, mouse

Applications Tested: Western blotting (WB), flow cytometry (FCM)

Immunogen

Recombinant protein of human GPHN

Isotype

Mouse IgG2a

Storage Buffer

Supplied in PBS (pH 7.4) containing 50% glycerol, and 0.02% sodium azide.

Storage

Store at -20 °C for one year.

Recommended Dilutions

Western Blotting (WB): 1:2,500-1:5,000

Flow Cytometry (FCM): 1:2,000

Note: This product is for research use only.

Validation Data

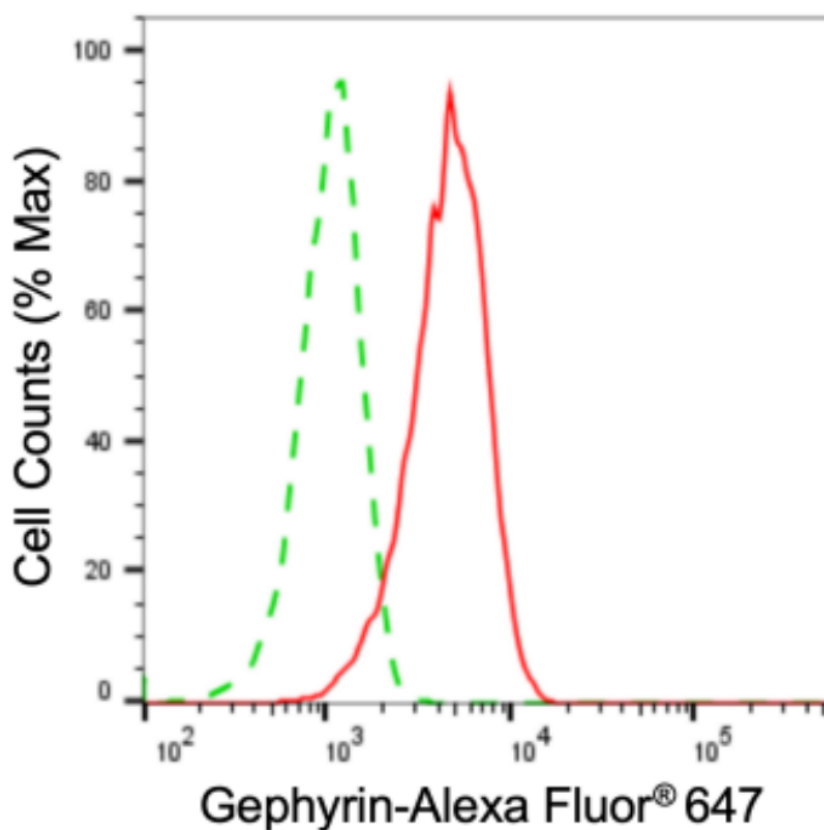
SUPPORT

SUPPORT@GENUINBIOTECH.COM
TEL: +1-540-855-7041

ORDERS

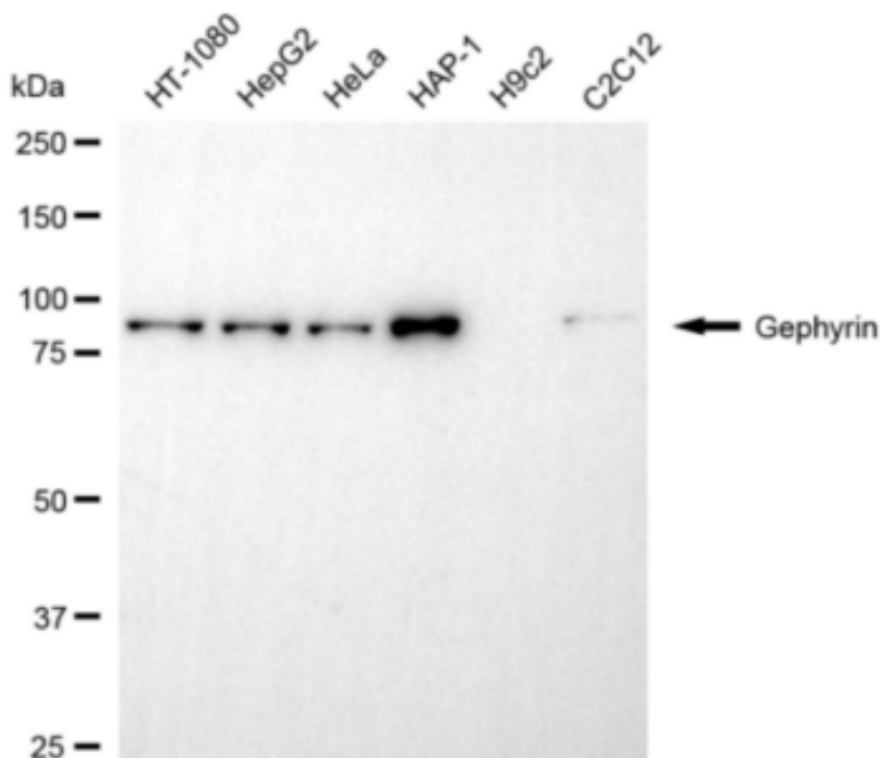
SALES@GENUINBIOTECH.COM
FAX: +1-540-855-7041

WWW.GENUINBIOTECH.COM



Copyright ©2024 Genuin Biotechnologies LLC

Flow cytometric analysis of Gephyrin expression in HAP-1 cells using anti-Gephyrin antibody (Cat#63428, 1:2,000). Green, isotype control; red, Gephyrin.

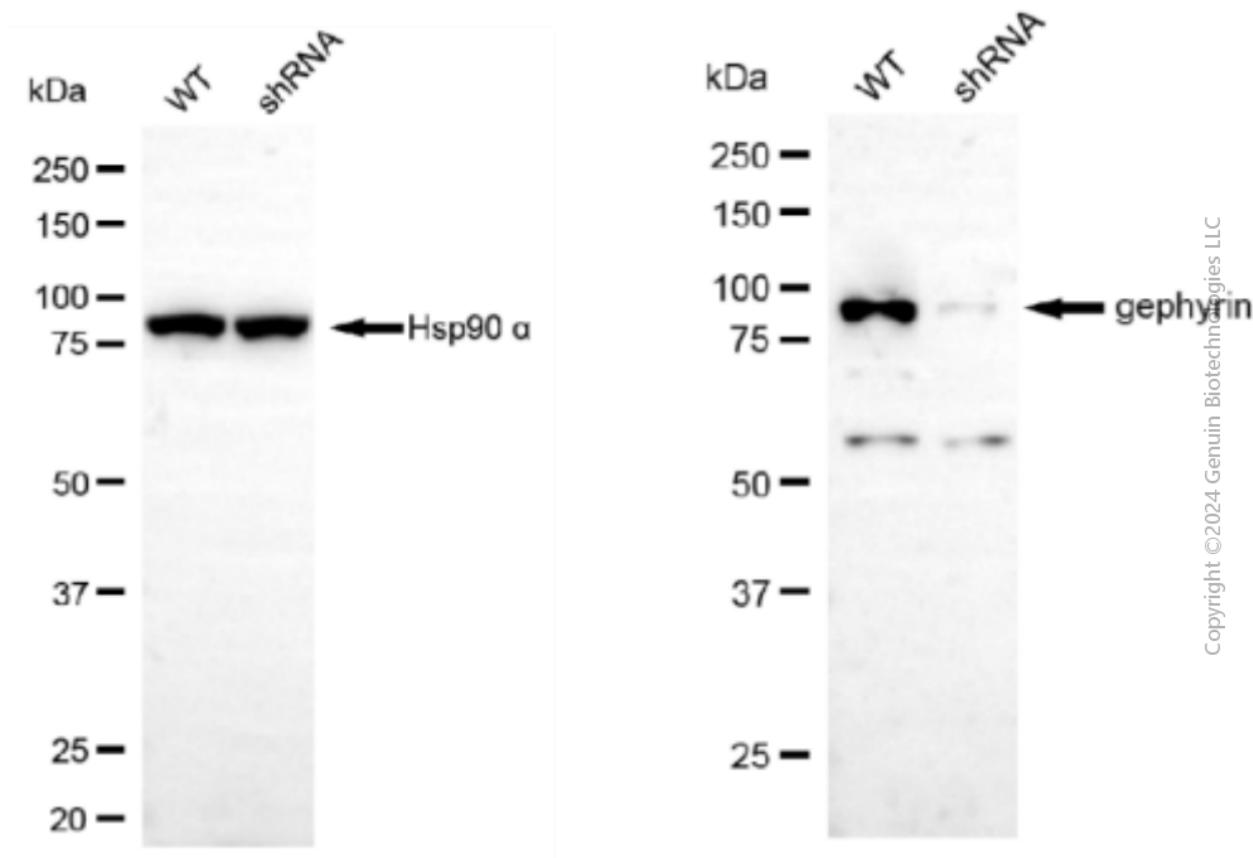


Copyright ©2024 Genuin Biotechnologies LLC

KD-Validated Anti-Gephyrin Mouse Monoclonal Antibody

PAGE 3

Western blotting analysis using anti-gephyrin antibody (Cat#63428). Total cell lysates (30 µg) from various cell lines were loaded and separated by SDS-PAGE. The blot was incubated with anti-gephyrin antibody (Cat#63428, 1:5,000) and HRP-conjugated goat anti-mouse secondary antibody (Cat#101, 1:20,000) respectively. Image was developed using NaQ™ ECL Substrate Kit (Cat#716).



Western blotting analysis using anti-gephyrin antibody (Cat#63428). Gephyrin expression in wild type (WT) and gephyrin (GPHN) shRNA knockdown (KD) HeLa cells with 20 µg of total cell lysates. Hsp90 α serves as a loading control. The blot was incubated with anti-gephyrin antibody (Cat#63428, 1:5,000) and HRP-conjugated goat anti-mouse secondary antibody (Cat#101, 1:20,000) respectively. Image was developed using FeQ™ ECL Substrate Kit (Cat#226).

SUPPORT

SUPPORT@GENUINBIOTECH.COM
TEL: +1-540-855-7041

ORDERS

SALES@GENUINBIOTECH.COM
FAX: +1-540-855-7041

WWW.GENUINBIOTECH.COM