

# KD-Validated Anti-DSTN Mouse Monoclonal Antibody



**Catalog #: 63440**

## Aliases

DSTN; Destrin, Actin Depolymerizing Factor; ACTDP; ADF; Actin-Depolymerizing Factor; Destrin; BA462D18.2 (Destrin (Actin Depolymerizing Factor ADF) (ACTDP)); Epididymis Secretory Sperm Binding Protein; Destrin (Actin Depolymerizing Factor); Epididymis Luminal Protein 32; BA462D18.2; HEL32; DSN

## Background

Gene Name: DSTN

NCBI Gene Entry: [11034](#)

UniProt Entry: [P60981](#)

## Application Information

Molecular Weight: Predicted, 19 kDa, observed, 19 kDa

Clonality: Mouse monoclonal antibody

Clone ID: 24GB5635

Species Reactivity: Human

Applications Tested: Western blotting (WB), flow cytometry (FCM), immunocytochemistry (IC)

## Immunogen

Recombinant protein of human DSTN

## Isotype

Mouse IgG2a

## Storage Buffer

Supplied in PBS (pH 7.4) containing 50% glycerol, and 0.02% sodium azide.

## Storage

Store at -20 °C for one year.

## Recommended Dilutions

Western Blotting (WB): 1:500-1:2,500

Flow Cytometry (FCM): 1:2,000

Immunocytochemistry (IC): 1:100-1:1,000

---

### SUPPORT

SUPPORT@GENUINBIOTECH.COM  
TEL: +1-540-855-7041

### ORDERS

SALES@GENUINBIOTECH.COM  
FAX: +1-540-855-7041

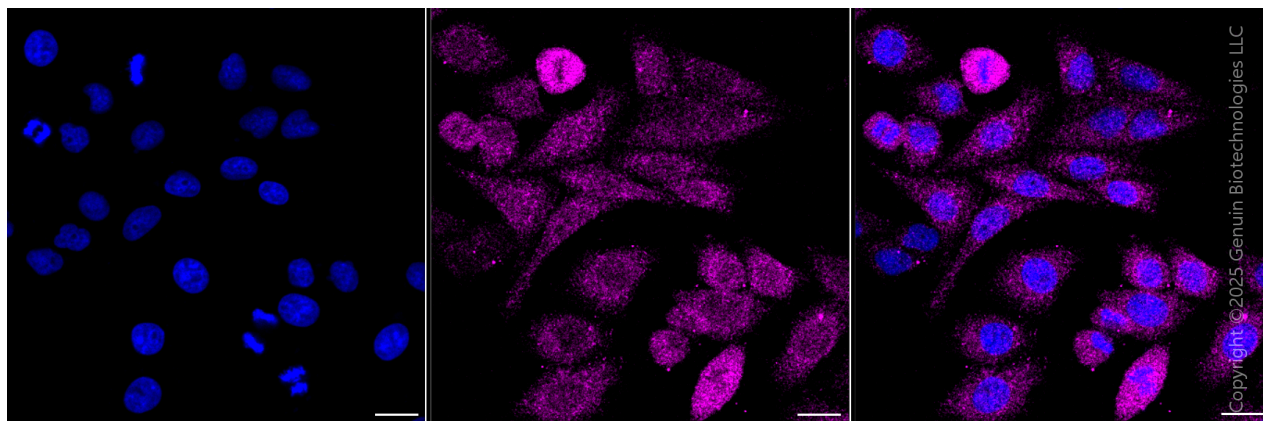
[WWW.GENUINBIOTECH.COM](http://WWW.GENUINBIOTECH.COM)

# KD-Validated Anti-DSTN Mouse Monoclonal Antibody

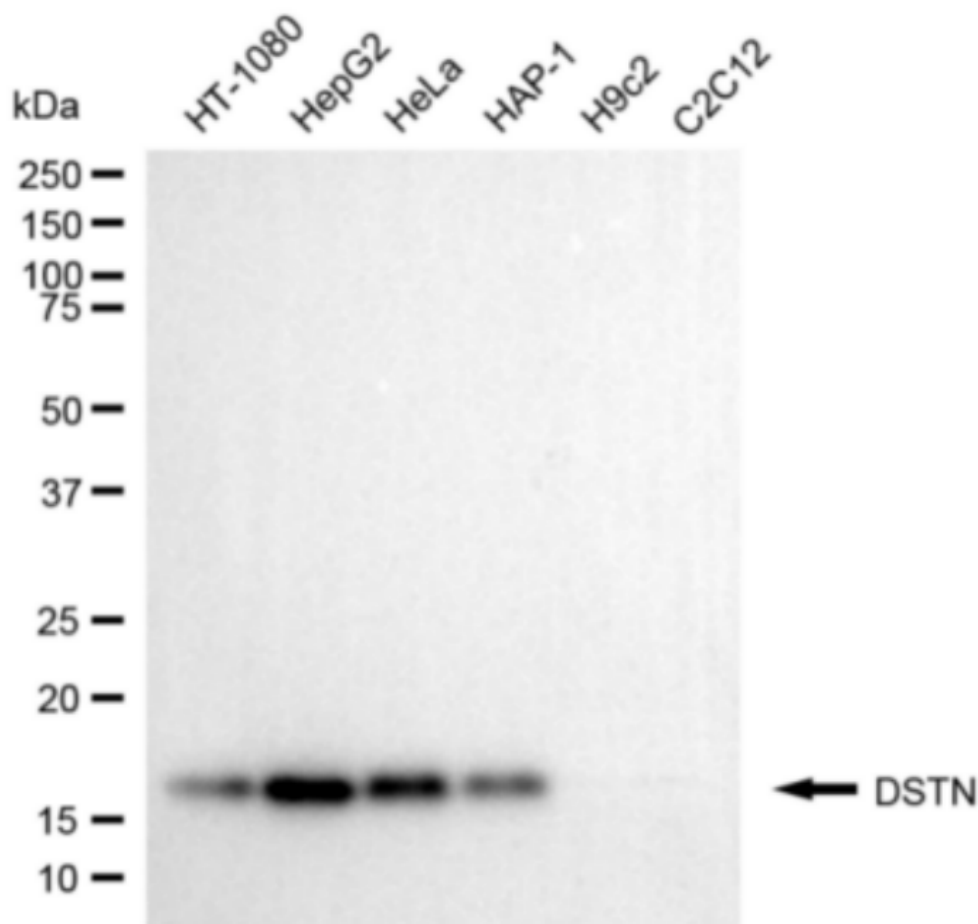
PAGE 2

**Note:** This product is for research use only.

## Validation Data



Immunocytochemical staining of HepG2 cells with anti-DSTN antibody (Cat#63440, 1:1,000) . Nuclei were stained blue with DAPI; DSTN was stained magenta with Alexa Fluor® 647. Images were taken using Leica stellaris 5. Protein abundance based on laser Intensity and Smart Gain □ Low. Scale bar, 20 μm.



### SUPPORT

SUPPORT@GENUINBIOTECH.COM  
TEL: +1-540-855-7041

### ORDERS

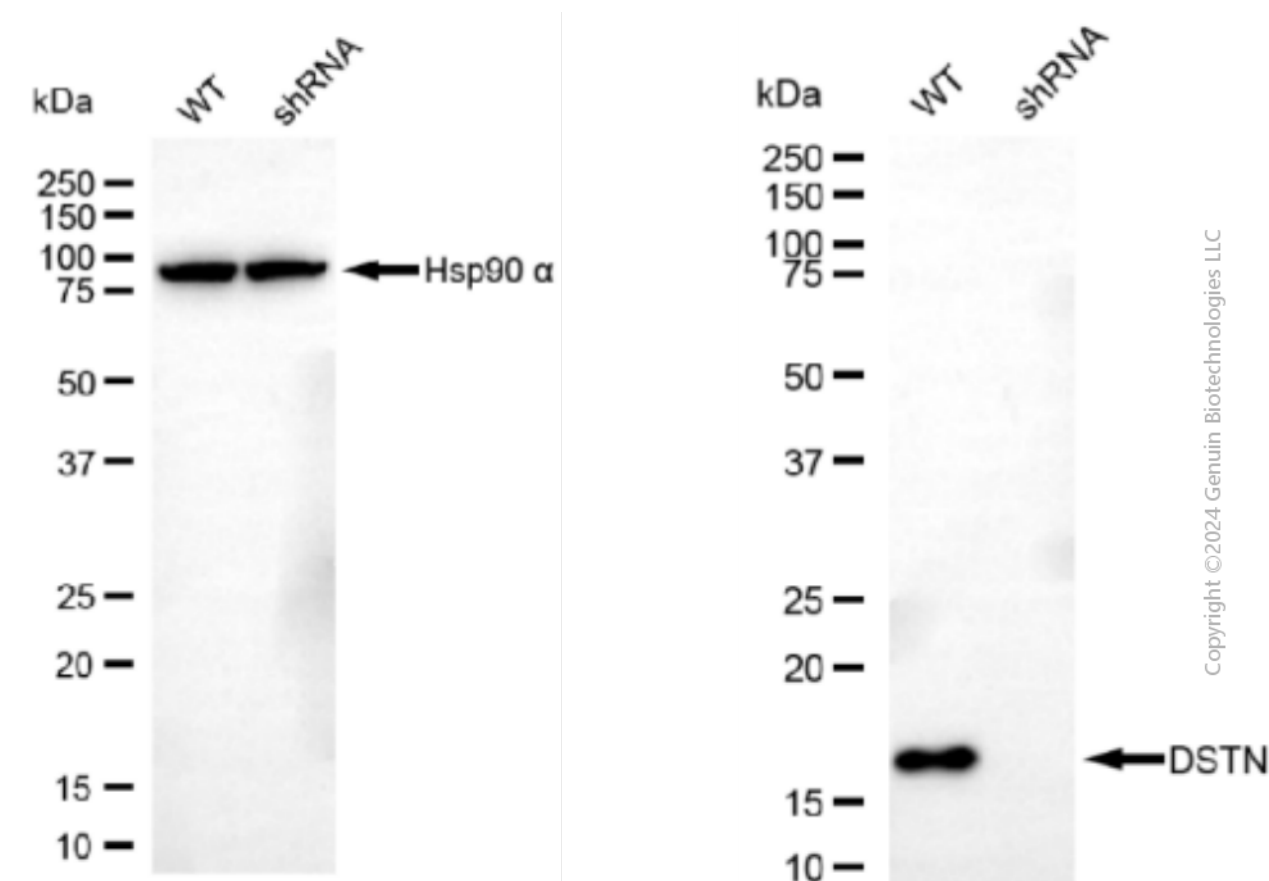
SALES@GENUINBIOTECH.COM  
FAX: +1-540-855-7041

WWW.GENUINBIOTECH.COM

## KD-Validated Anti-DSTN Mouse Monoclonal Antibody

PAGE 3

Western blotting analysis using anti-DSTN antibody (Cat#63440). Total cell lysates (30  $\mu$ g) from various cell lines were loaded and separated by SDS-PAGE. The blot was incubated with anti-DSTN antibody (Cat#63440, 1:2,500) and HRP-conjugated goat anti-mouse secondary antibody (Cat#101, 1:20,000) respectively. Image was developed using FeQ™ ECL Substrate Kit (Cat#226).



Western blotting analysis using anti-DSTN antibody (Cat#63440). DSTN expression in wild type (WT) and DSTN shRNA knockdown (KD) HeLa cells with 20  $\mu$ g of total cell lysates.  $\beta$ -Tubulin serves as a loading control. The blot was incubated with anti-DSTN antibody (Cat#63440, 1:2,500) and HRP-conjugated goat anti-mouse secondary antibody (Cat#101, 1:20,000) respectively. Image was developed using NaQ™ ECL Substrate Kit (Cat#716).

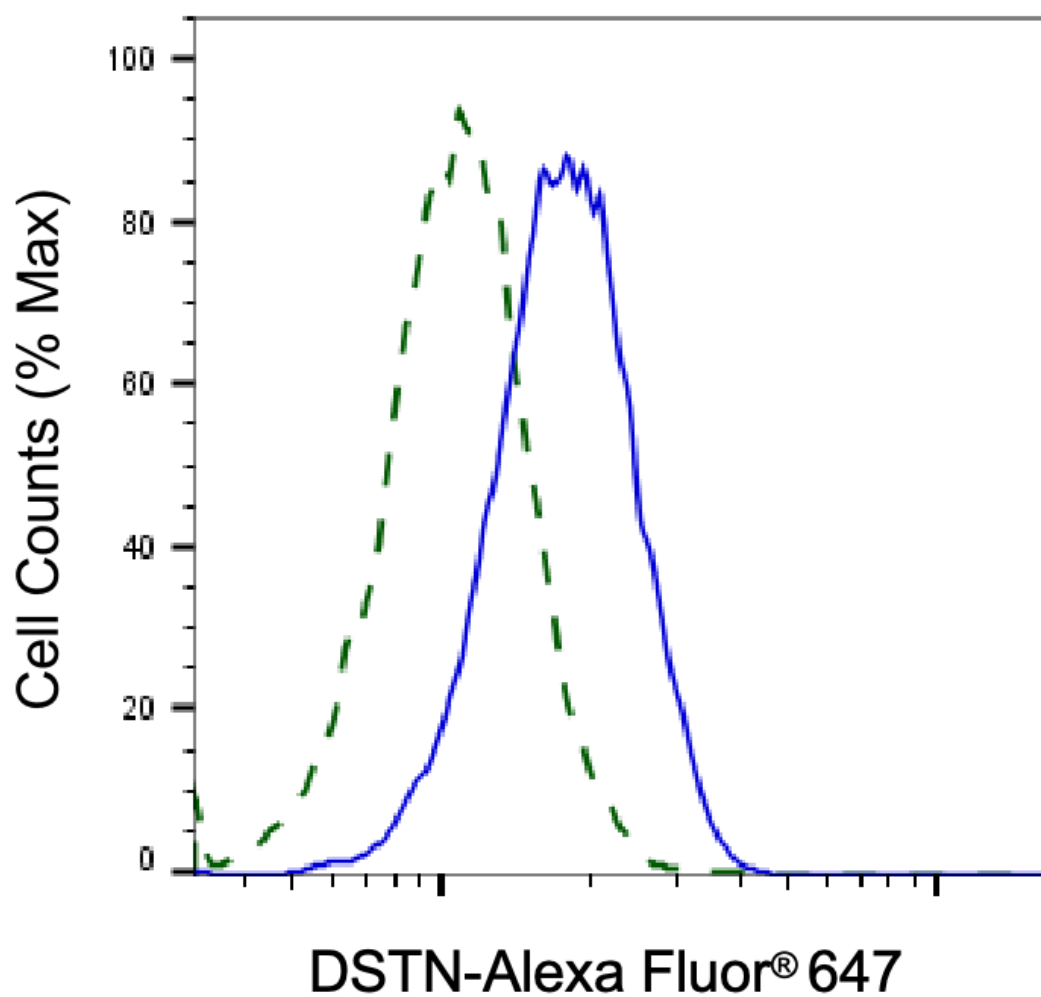
### SUPPORT

SUPPORT@GENUINBIOTECH.COM  
TEL: +1-540-855-7041

### ORDERS

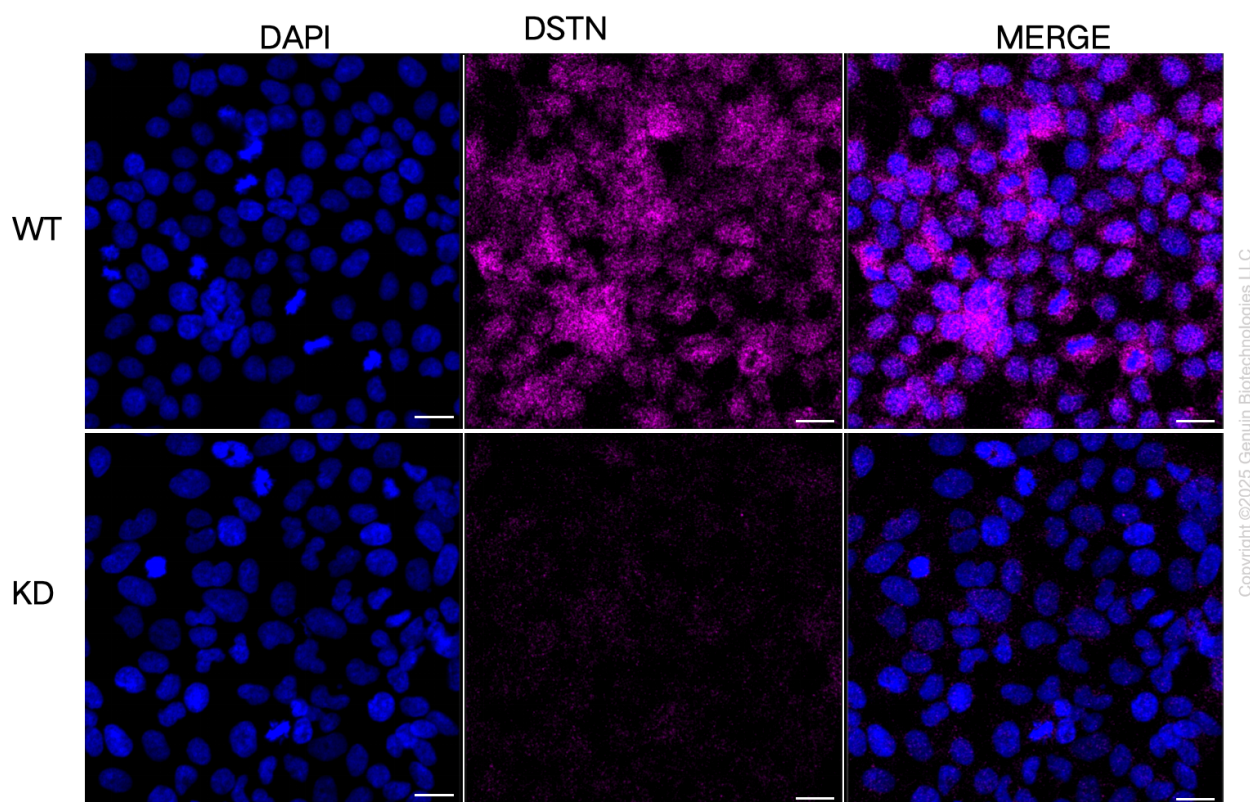
SALES@GENUINBIOTECH.COM  
FAX: +1-540-855-7041

[WWW.GENUINBIOTECH.COM](http://WWW.GENUINBIOTECH.COM)



Copyright ©2025 Genuin Biotechnologies LLC

Validation of DSTN knockdown using flow cytometry. Wild-type(WT, Blue) and knockdown(KD, Green) HeLa cells were stained with anti-DSTN antibody (Cat#63440, 1:2,000) and analyzed using BD flow cytometer.



Immunocytochemical staining of HeLa cells using anti-DSTN antibody (Cat#63440, 1:1,000), Top panel: wild-type (WT); Bottom panel: DSTN shRNA knockdown (KD). Nuclei were stained blue with DAPI; DSTN was stained magenta with Alexa Fluor® 647. Scale bar, 20  $\mu$ m.