

KD-Validated Anti-ERBB2 Mouse Monoclonal Antibody



Catalog #: 63444

Aliases

ERBB2; Erb-B2 Receptor Tyrosine Kinase 2; HER2; NEU 2; C-ERB-2; C-ERB2; MLN-19; HER-2; CD340; NGL; V-Erb-B2 Avian Erythroblastic Leukemia Viral Oncogene Homolog 2; Tyrosine Kinase-Type Cell Surface Receptor HER2; Neuro/Glioblastoma Derived Oncogene Homolog; Human Epidermal Growth Factor Receptor 2; Receptor Tyrosine-Protein Kinase ErbB-2; Metastatic Lymph Node Gene 19 Protein; Proto-Oncogene C-ErbB-2; Proto-Oncogene Neu; P185(ErbB2); EC 2.7.10.1; MLN 19; V-Erb-B2 Avian Erythroblastic Leukemia Viral Oncogene Homolog 2 (Neuro/Glioblastoma Derived Oncogene Homolog) 2; V-Erb-B2 Erythroblastic Leukemia Viral Oncogene Homolog 2, Neuro/Glioblastoma Derived Oncogene Homolog; V-Erb-B2 Avian Erythroblastic Leukemia Viral Oncoprotein 2; Neuroblastoma/Glioblastoma Derived Oncogene Homolog; Metastatic Lymph Node Gene 19; C-Erb B2/Neu Protein; CD340 Antigen; P185(ERBB2); HER-2/Neu; Herstatin; P185erbB2; EC 2.7.10; VSCN2; MLN19; TKR1

Background

Gene Name: ERBB2

NCBI Gene Entry: [2064](#)

UniProt Entry: [P04626](#)

Application Information

Molecular Weight: Predicted, 138 kDa, observed, 180 kDa

Clonality: Mouse monoclonal antibody

Clone ID: 24GB5655

Species Reactivity: Human, mouse, rat

Applications Tested: Western blotting (WB), flow cytometry (FCM)

Immunogen

Recombinant protein of human ERBB2

Isotype

Mouse IgG2a

Storage Buffer

Supplied in PBS (pH 7.4) containing 50% glycerol, and 0.02% sodium azide.

Storage

SUPPORT

SUPPORT@GENUINBIOTECH.COM
TEL: +1-540-855-7041

ORDERS

SALES@GENUINBIOTECH.COM
FAX: +1-540-855-7041

WWW.GENUINBIOTECH.COM

KD-Validated Anti-ERBB2 Mouse Monoclonal Antibody

PAGE 2

Store at -20 °C for one year.

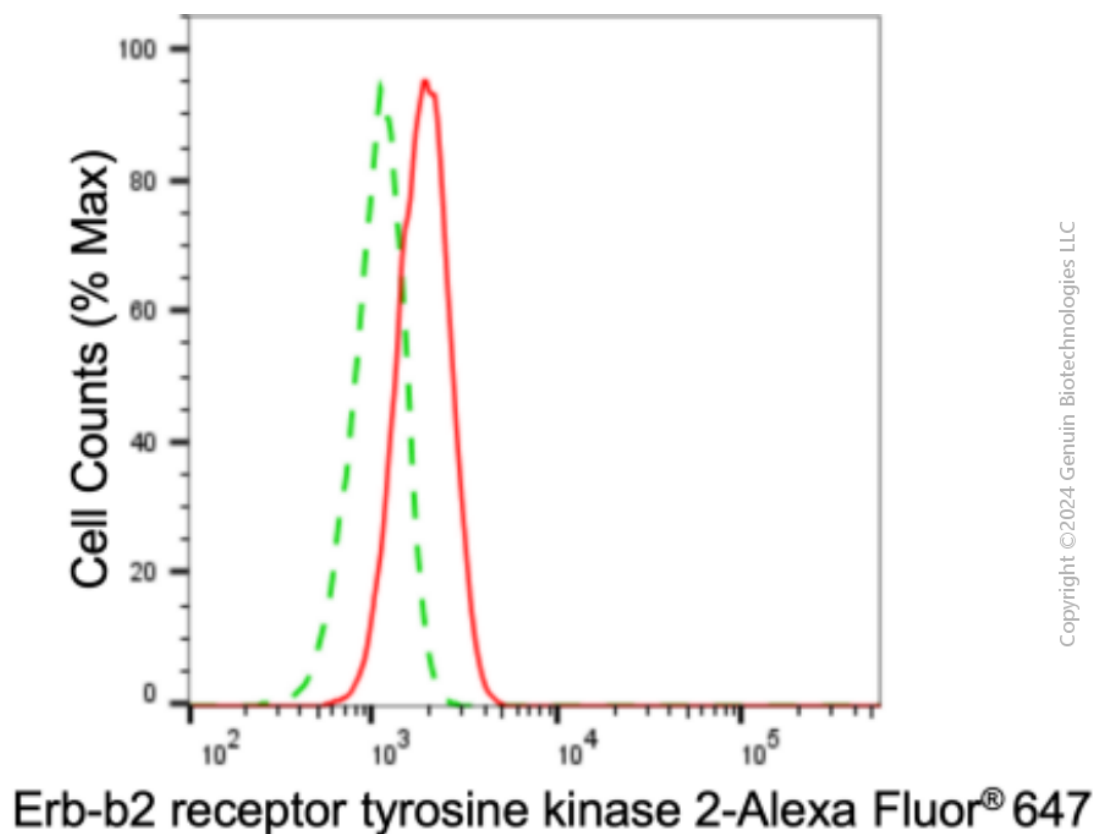
Recommended Dilutions

Western Blotting (WB): 1:2,500-1:5,000

Flow Cytometry (FCM): 1:2,000

Note: This product is for research use only.

Validation Data



Flow cytometric analysis of Erb-b2 receptor tyrosine kinase 2 expression in H9c2 cells using anti-Erb-b2 receptor tyrosine kinase 2 antibody (Cat#63444, 1:2,000). Green, isotype control; red, Erb-b2 receptor tyrosine kinase 2.

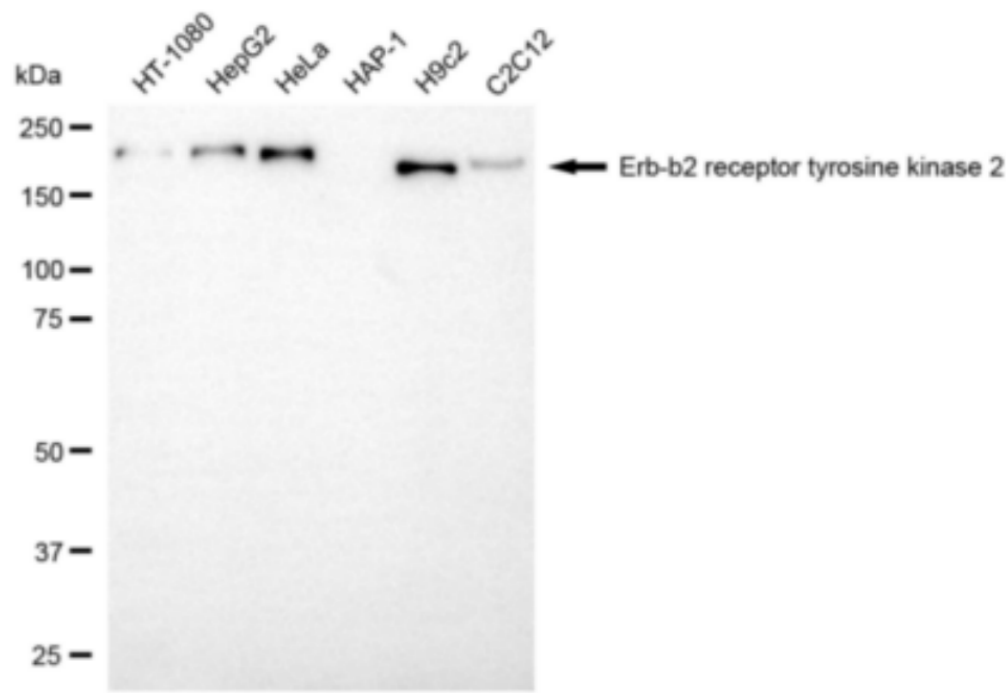
SUPPORT

SUPPORT@GENUINBIOTECH.COM
TEL: +1-540-855-7041

ORDERS

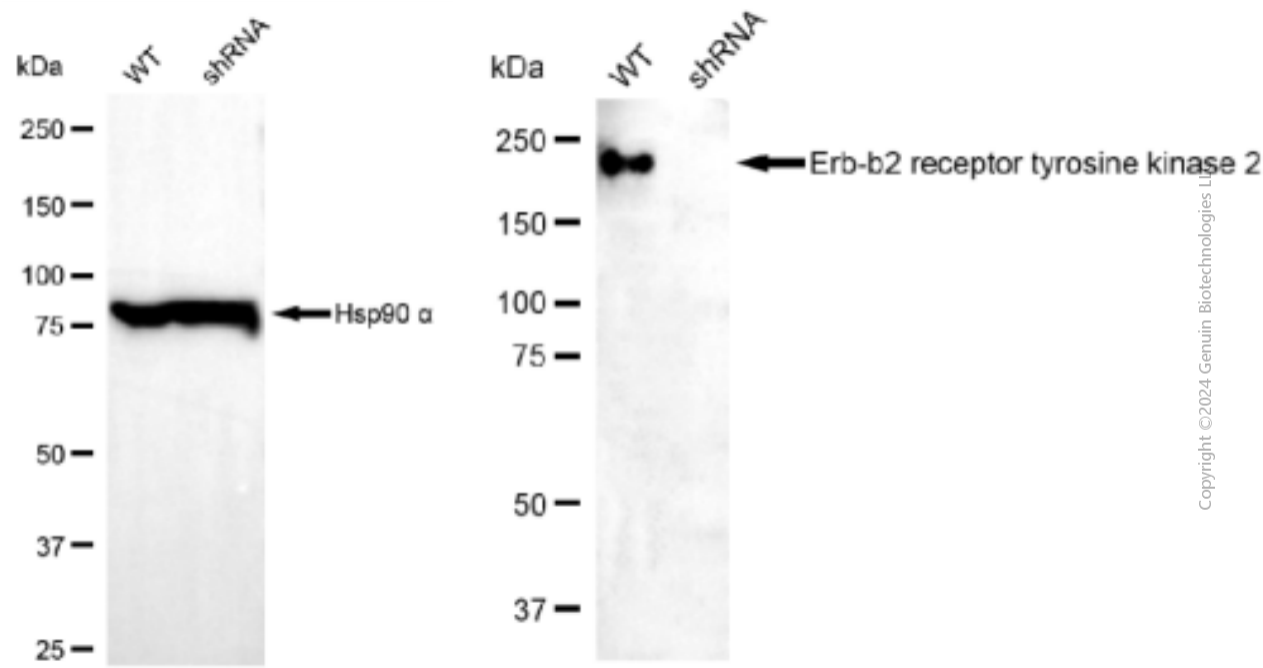
SALES@GENUINBIOTECH.COM
FAX: +1-540-855-7041

WWW.GENUINBIOTECH.COM



Copyright ©2024 Genuin Biotechnologies LLC

Western blotting analysis using anti-erb-b2 receptor tyrosine kinase 2 antibody (Cat#63444). Total cell lysates (30 µg) from various cell lines were loaded and separated by SDS-PAGE. The blot was incubated with anti-erb-b2 receptor tyrosine kinase 2 antibody (Cat#63444, 1:5,000) and HRP-conjugated goat anti-mouse secondary antibody (Cat#101, 1:20,000) respectively. Image was developed using NaQ™ ECL Substrate Kit(Cat#716).



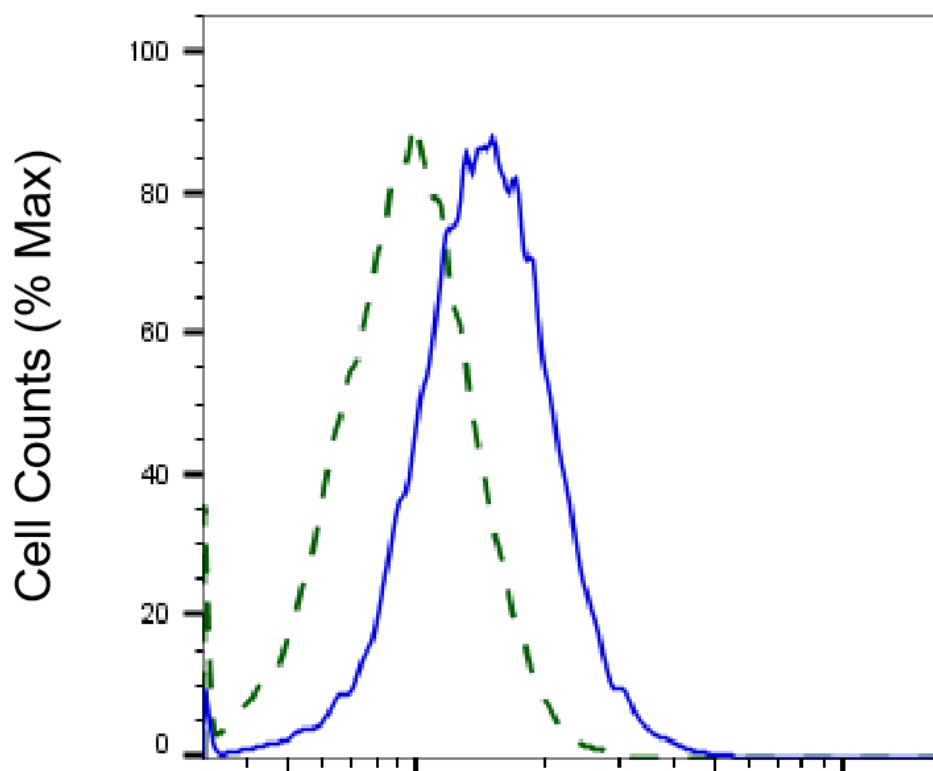
Copyright ©2024 Genuin Biotechnologies LLC

Western blotting analysis using anti-erb-b2 receptor tyrosine kinase 2 antibody (Cat#63444). Erb-

KD-Validated Anti-ERBB2 Mouse Monoclonal Antibody

PAGE 4

b2 receptor tyrosine kinase 2 expression in wild type (WT) and erb-b2 receptor tyrosine kinase 2 (ERBB2) shRNA knockdown (KD) 293T cells with 20 µg of total cell lysates. Hsp90 α serves as a loading control. The blot was incubated with anti-erb-b2 receptor tyrosine kinase 2 antibody (Cat#63444, 1:5,000) and HRP-conjugated goat anti-mouse secondary antibody (Cat#101, 1:20,000) respectively. Image was developed using FeQ™ ECL Substrate Kit (Cat#226).



Copyright ©2025 Genuin Biotechnologies LLC

Erb-b2 receptor tyrosine kinase 2-Alexa Fluor® 647

Validation of Erb-b2 receptor tyrosine kinase 2 knockdown using flow cytometry. Wild-type(WT, Blue) and knockdown(KD, Green) 293T cells were stained with anti-Erb-b2 receptor tyrosine kinase 2 antibody (Cat#63444, 1:2,000) and analyzed using BD flow cytometer.

SUPPORT

SUPPORT@GENUINBIOTECH.COM
TEL: +1-540-855-7041

ORDERS

SALES@GENUINBIOTECH.COM
FAX: +1-540-855-7041

WWW.GENUINBIOTECH.COM