

KD-Validated Anti-HRAS Mouse Monoclonal Antibody



Catalog #: 63452

Aliases

HRAS; HRas Proto-Oncogene, GTPase; HRAS1; V-Ha-Ras Harvey Rat Sarcoma Viral Oncogene Homolog; Harvey Rat Sarcoma Viral Oncogene Homolog; Transforming Protein P21; GTPase HRas; P21ras; Ras Family Small GTP Binding Protein H-Ras; Harvey Rat Sarcoma Viral Oncoprotein; Transformation Gene: Oncogene HAMSV; GTP- And GDP-Binding Peptide B; Ha-Ras1 Proto-Oncoprotein; C-Has/Bas P21 Protein; P19 H-RasIDX Protein; EC 3.6.5.2; C-BAS/HAS; C-HA-RAS1; H-RASIDX; C-H-RAS; H-Ras-1; C-H-Ras; Ha-Ras; HAMSV; RASH1; CTLO

Background

Gene Name: HRAS

NCBI Gene Entry: [3265](#)

UniProt Entry: [P01112](#)

Application Information

Molecular Weight: Predicted, 21 kDa, observed, 18 kDa

Clonality: Mouse monoclonal antibody

Clone ID: 24GB5695

Species Reactivity: Human, mouse, rat

Applications Tested: Western blotting (WB), immunocytochemistry (IC)

Immunogen

Recombinant protein of human HRAS

Isotype

Mouse IgG1

Storage Buffer

Supplied in PBS (pH 7.4) containing 50% glycerol, and 0.02% sodium azide.

Storage

Store at -20 °C for one year.

Recommended Dilutions

Western Blotting (WB): 1:500-1:2,500

Immunocytochemistry (IC): 1:100-1:1,000

SUPPORT

SUPPORT@GENUINBIOTECH.COM
TEL: +1-540-855-7041

ORDERS

SALES@GENUINBIOTECH.COM
FAX: +1-540-855-7041

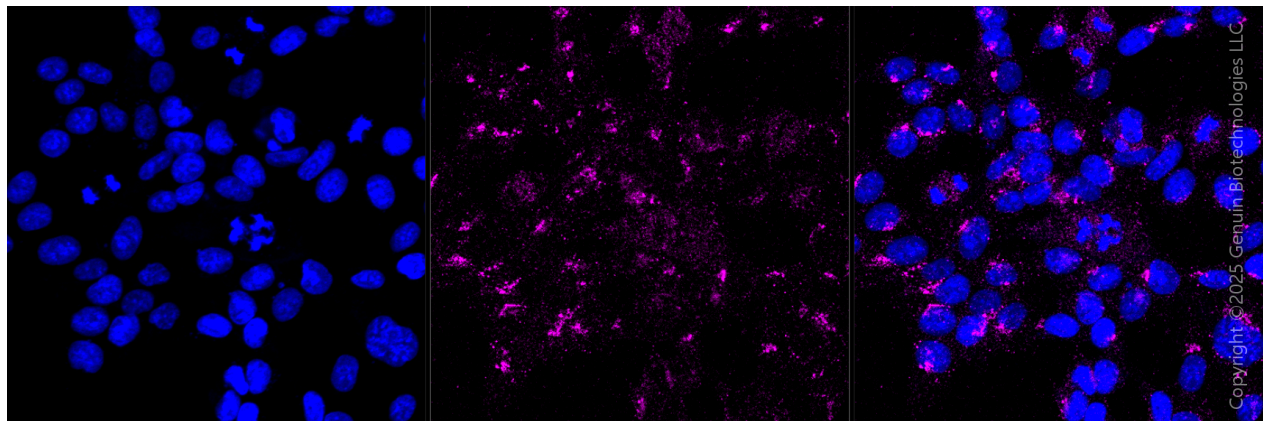
WWW.GENUINBIOTECH.COM

KD-Validated Anti-HRAS Mouse Monoclonal Antibody

PAGE 2

Note: This product is for research use only.

Validation Data



Immunocytochemical staining of HAP-1 cells with HRAS antibody (Cat#63452, 1:1,000) . Nuclei were stained blue with DAPI; HRAS was stained magenta with Alexa Fluor® 647. Images were taken using Leica stellaris 5. Protein abundance based on laser Intensity and smart gain: . Scale bar, 20 μ m.

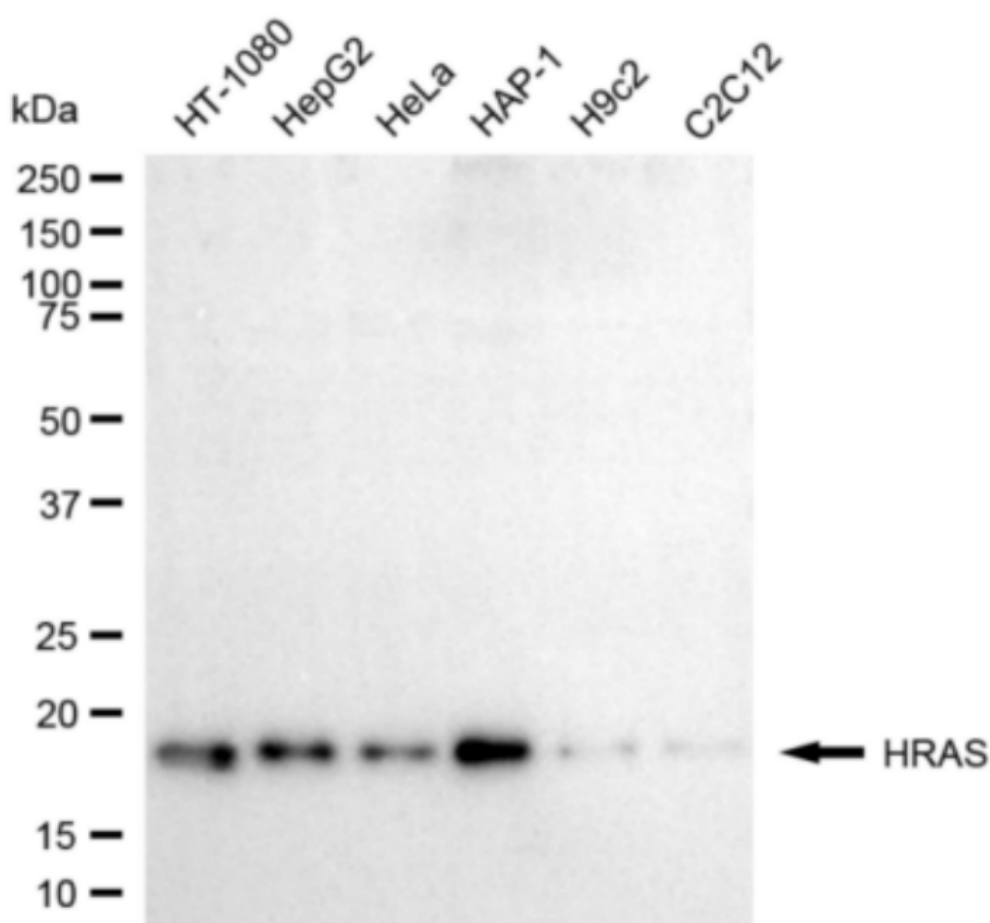
SUPPORT

SUPPORT@GENUINBIOTECH.COM
TEL: +1-540-855-7041

ORDERS

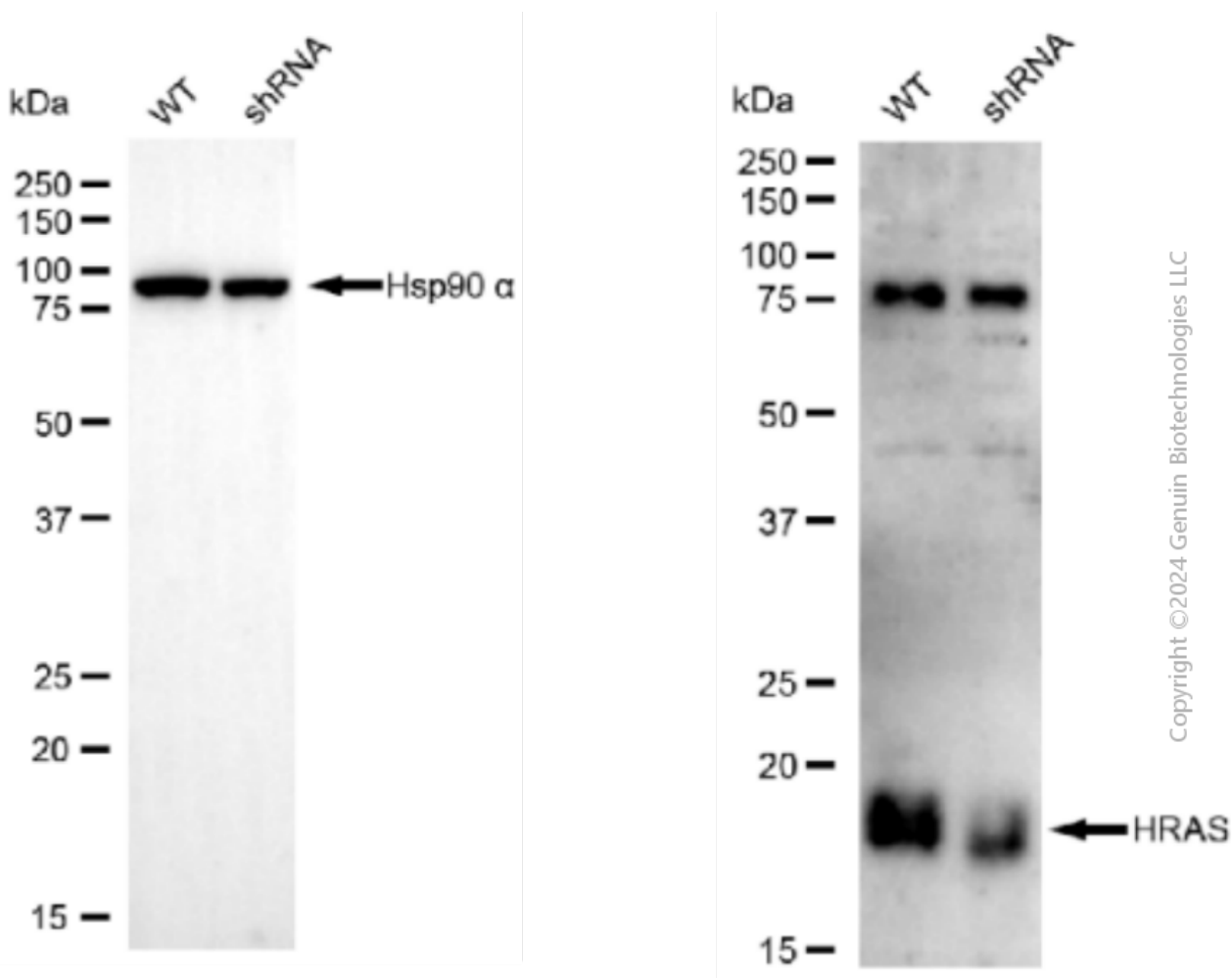
SALES@GENUINBIOTECH.COM
FAX: +1-540-855-7041

WWW.GENUINBIOTECH.COM

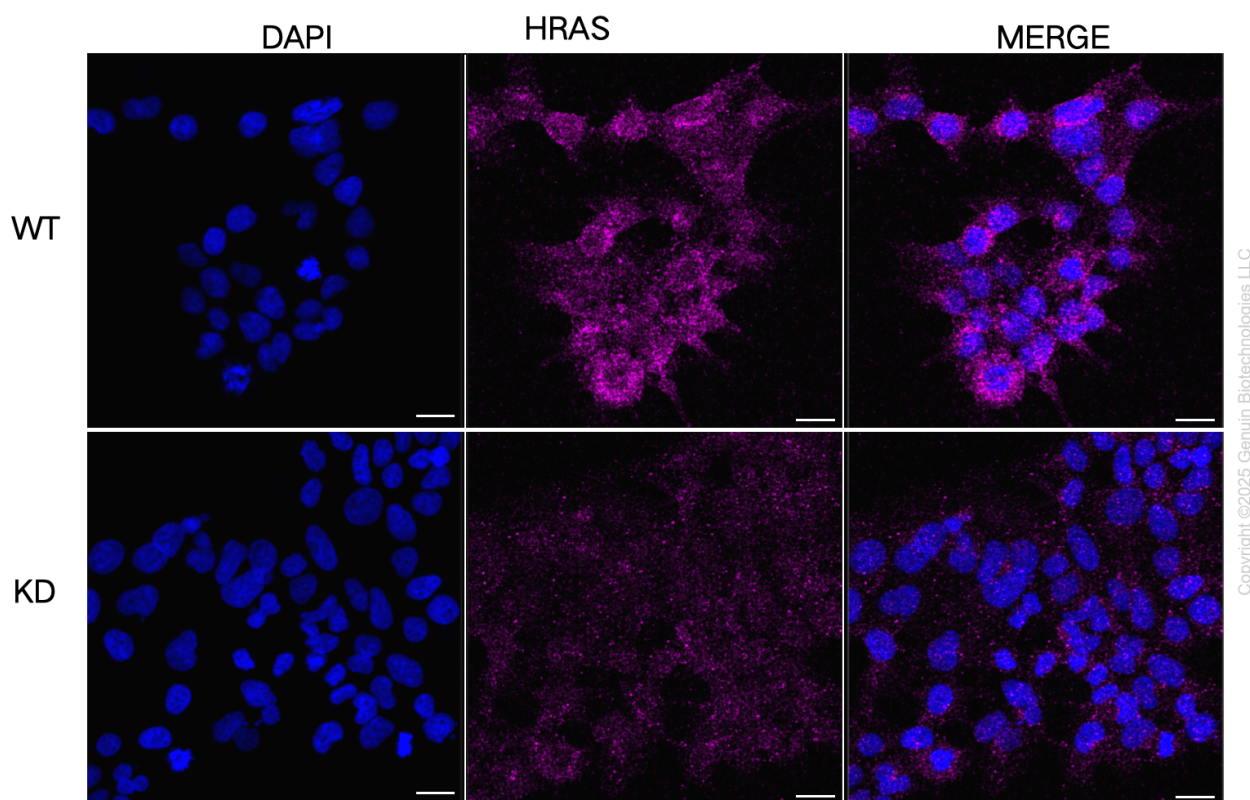


Copyright ©2024 Genuin Biotechnologies LLC

Western blotting analysis using anti-HRAS antibody (Cat#63452). Total cell lysates (30 µg) from various cell lines were loaded and separated by SDS-PAGE. The blot was incubated with anti-HRAS antibody (Cat#63452, 1:2,500) and HRP-conjugated goat anti-mouse secondary antibody (Cat#101, 1:20,000) respectively. Image was developed using FeQ™ ECL Substrate Kit (Cat#226).



Western blotting analysis using anti-HRAS antibody (Cat#63452). HRAS expression in wild type (WT) and HRAS shRNA knockdown (KD) HeLa cells with 20 μ g of total cell lysates. Hsp90 α serves as a loading control. The blot was incubated with anti-HRAS antibody (Cat#63452, 1:2,500) and HRP-conjugated goat anti-mouse secondary antibody (Cat#101, 1:20,000) respectively. Image was developed using FeQ™ ECL Substrate Kit (Cat#226).



Immunocytochemical staining of HeLa cells using anti-HRAS antibody (Cat#63452, 1:1,000), Top panel: wild-type (WT); Bottom panel: HRAS shRNA knockdown (KD). Nuclei were stained blue with DAPI; HRAS was stained magenta with Alexa Fluor® 647. Scale bar, 20 μ m.