

KD-Validated Anti-Forkhead Box P1 Mouse Monoclonal Antibody



Catalog #: 63461

Aliases

FOXP1; Forkhead Box P1; HSPC215; HFKH1B; 12CC4; QRF1; Fork Head-Related Protein Like B; Mac-1-Regulated Forkhead; Glutamine-Rich Factor 1; Forkhead Box Protein P1; MFH; PAX5/FOXP1 Fusion Protein

Background

Gene Name: FOXP1

NCBI Gene Entry: [27086](#)

UniProt Entry: [Q9H334](#)

Application Information

Molecular Weight: Predicted, 75 kDa; observed, 75 kDa

Clonality: Mouse monoclonal antibody

Clone ID: 24GB5740

Species Reactivity: Human

Applications Tested: Western blotting (WB), flow cytometry (FCM), immunocytochemistry (IC)

Immunogen

Recombinant protein of human FOXP1

Isotype

Mouse IgG1

Storage Buffer

Supplied in PBS (pH 7.4) containing 50% glycerol, and 0.02% sodium azide.

Storage

Store at -20 °C for one year.

Recommended Dilutions

Western Blotting (WB): 1:500-1:2,500

Flow Cytometry (FCM): 1::200-1:2,000

Immunocytochemistry (IC): 1:100-1:1,000

Note: This product is for research use only.

SUPPORT

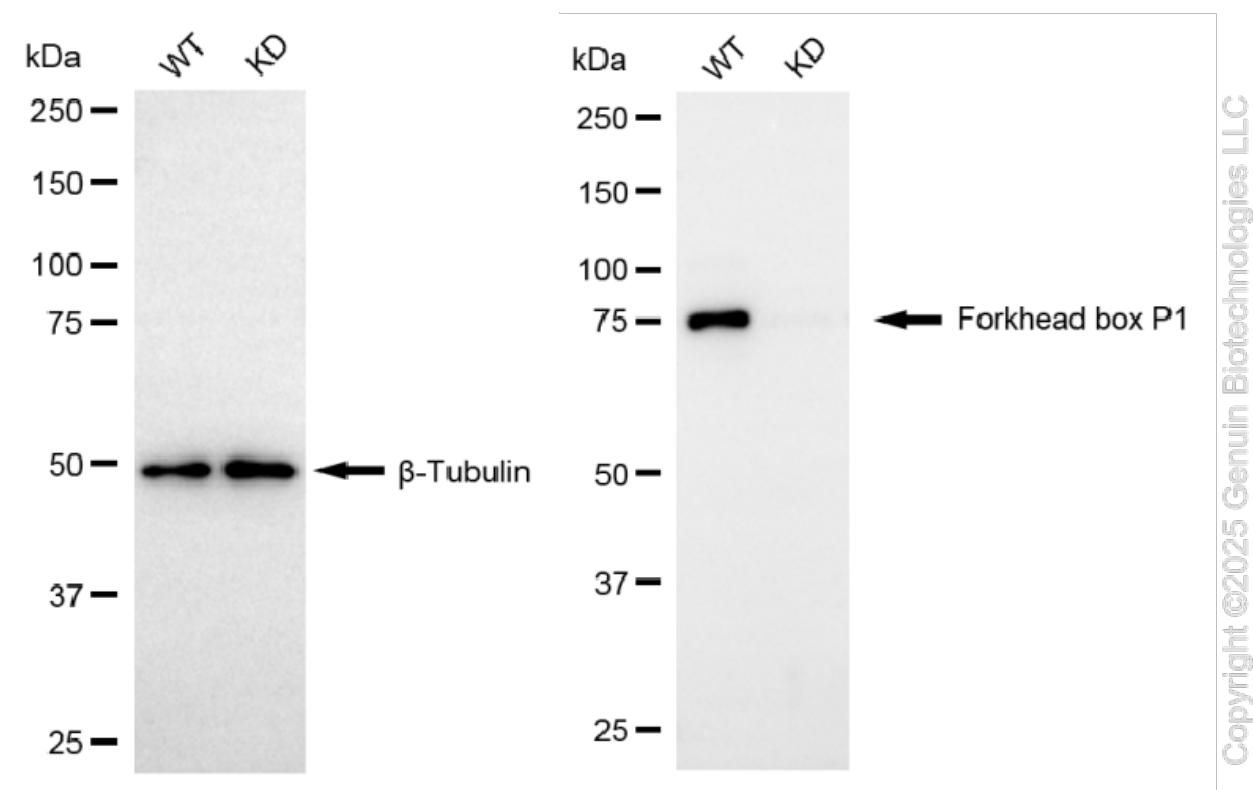
SUPPORT@GENUINBIOTECH.COM
TEL: +1-540-855-7041

ORDERS

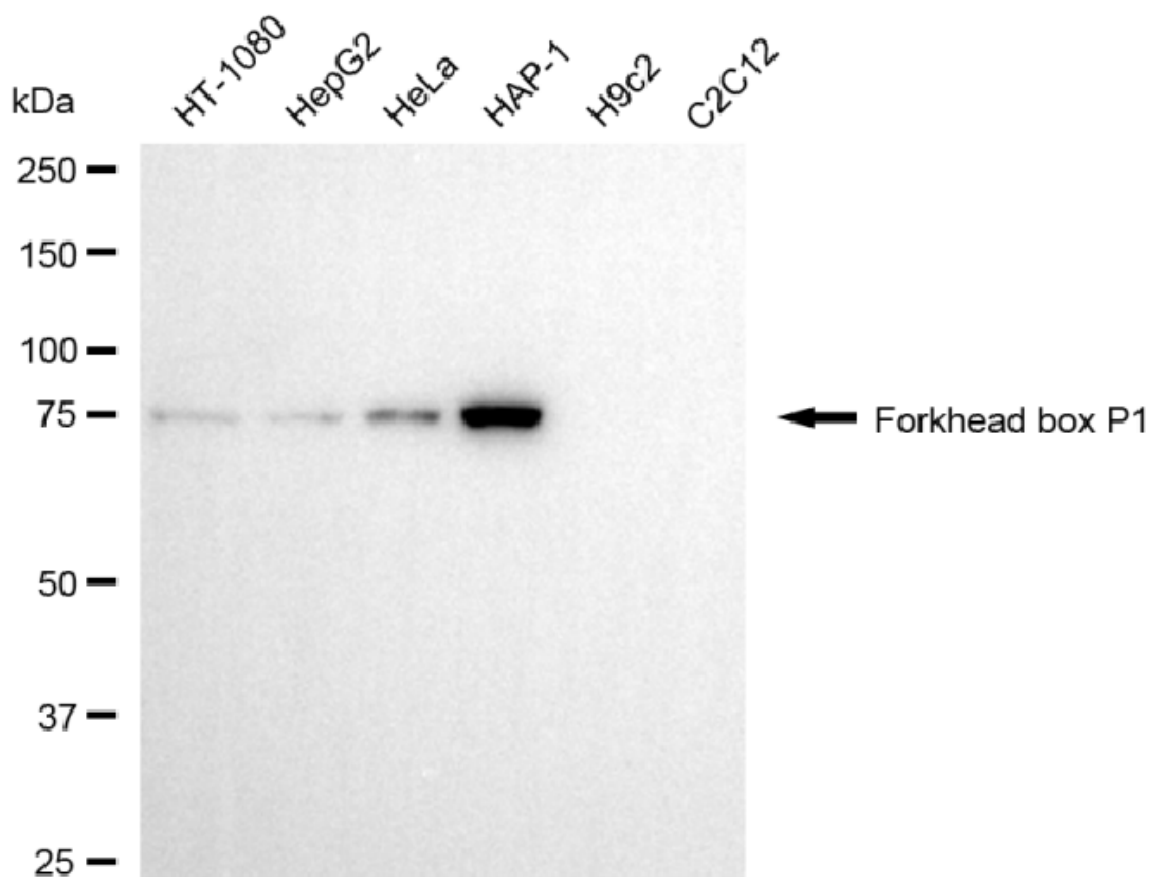
SALES@GENUINBIOTECH.COM
FAX: +1-540-855-7041

WWW.GENUINBIOTECH.COM

Validation Data

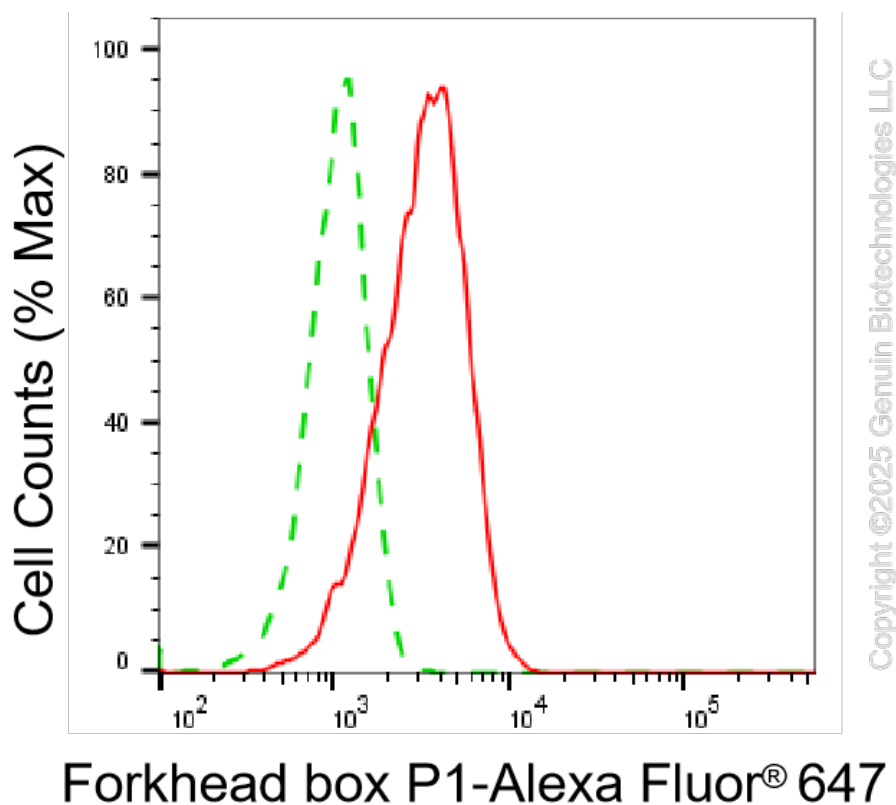


Western blotting analysis using anti-forkhead box P1 antibody (Cat#63461). Forkhead box P1 expression in wild-type (WT) and forkhead box P1 (FOXP1) knockdown (KD) HeLa cells with 20 μ g of total cell lysates. β -Tubulin serves as a loading control. The blot was incubated with anti-forkhead box P1 antibody (Cat#63461, 1:2,500) and HRP-conjugated goat anti-mouse secondary antibody (Cat#101, 1:20,000) respectively. Image was developed using FeQ™ ECL Substrate Kit (Cat#226).

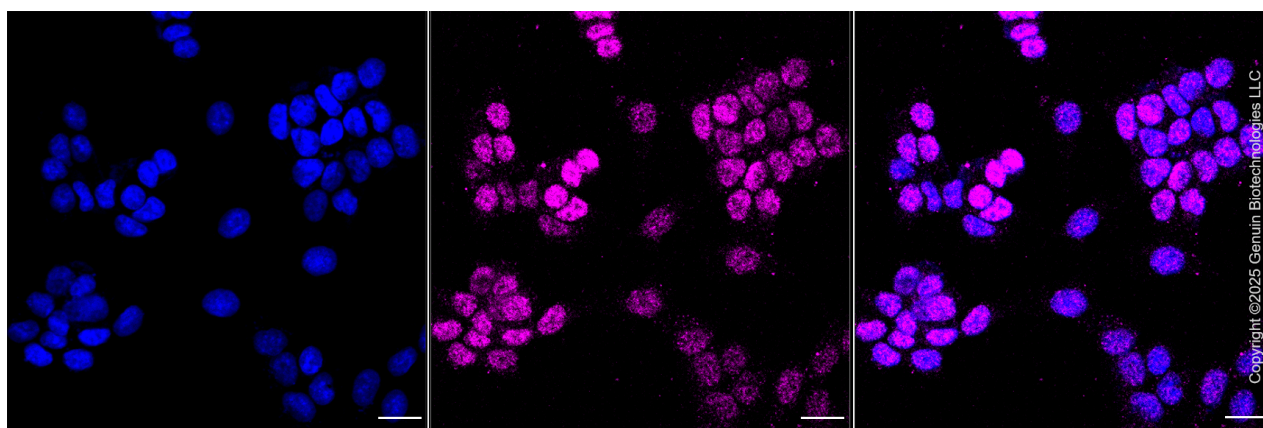


Copyright ©2025 Genuin Biotechnologies LLC

Western blotting analysis using anti-forkhead box P1 antibody (Cat#63461). Total cell lysates (30 μ g) from various cell lines were loaded and separated by SDS-PAGE. The blot was incubated with anti-forkhead box P1 antibody (Cat#63461, 1:2,500) and HRP-conjugated goat anti-mouse secondary antibody (Cat#101, 1:20,000) respectively. Image was developed using NaQ™ ECL Substrate Kit (Cat#716).



Flow cytometric analysis of Forkhead box P1 expression in HAP-1 cells using anti-Forkhead box P1 antibody (Cat#63461, 1:2,000). Green, isotype control; red, Forkhead box P1.



Immunocytochemical staining of HAP-1 cells with Forkhead box P1 antibody (Cat#63461, 1:1,000). Nuclei were stained blue with DAPI; Forkhead box P1 was stained magenta with Alexa Fluor® 647. Images were taken using Leica stellaris 5. Protein abundance based on laser Intensity and smart gain: Medium. Scale bar, 20 µm.