

KD-Validated Anti-NEFM Mouse Monoclonal Antibody



Catalog #: 63462

Aliases

NEFM; Neurofilament Medium Chain; NF-M; NFM; NEF3; Neurofilament, Medium Polypeptide 150kDa; Neurofilament Medium Polypeptide; Neurofilament Triplet M Protein; 160 KDa Neurofilament Protein; Neurofilament 3; Neurofilament, Medium Polypeptide; Neurofilament-3 (150 KD Medium); Neurofilament Medium

Background

Gene Name: NEFM

NCBI Gene Entry: [4741](#)

UniProt Entry: [P07197](#)

Application Information

Molecular Weight: Predicted, 102 kDa; observed, 150 kDa

Clonality: Mouse monoclonal antibody

Clone ID: 24GB5745

Species Reactivity: Human

Applications Tested: Western blotting (WB), flow cytometry (FCM), immunocytochemistry (IC)

Immunogen

Recombinant protein of human NEFM

Isotype

Mouse IgG1

Storage Buffer

Supplied in PBS (pH 7.4) containing 50% glycerol, and 0.02% sodium azide.

Storage

Store at -20 °C for one year.

Recommended Dilutions

Western Blotting (WB): 1:1,000-1:5,000

Flow Cytometry (FCM): 1::200-1:2,000

Immunocytochemistry (IC): 1:100-1:1,000

SUPPORT

SUPPORT@GENUINBIOTECH.COM
TEL: +1-540-855-7041

ORDERS

SALES@GENUINBIOTECH.COM
FAX: +1-540-855-7041

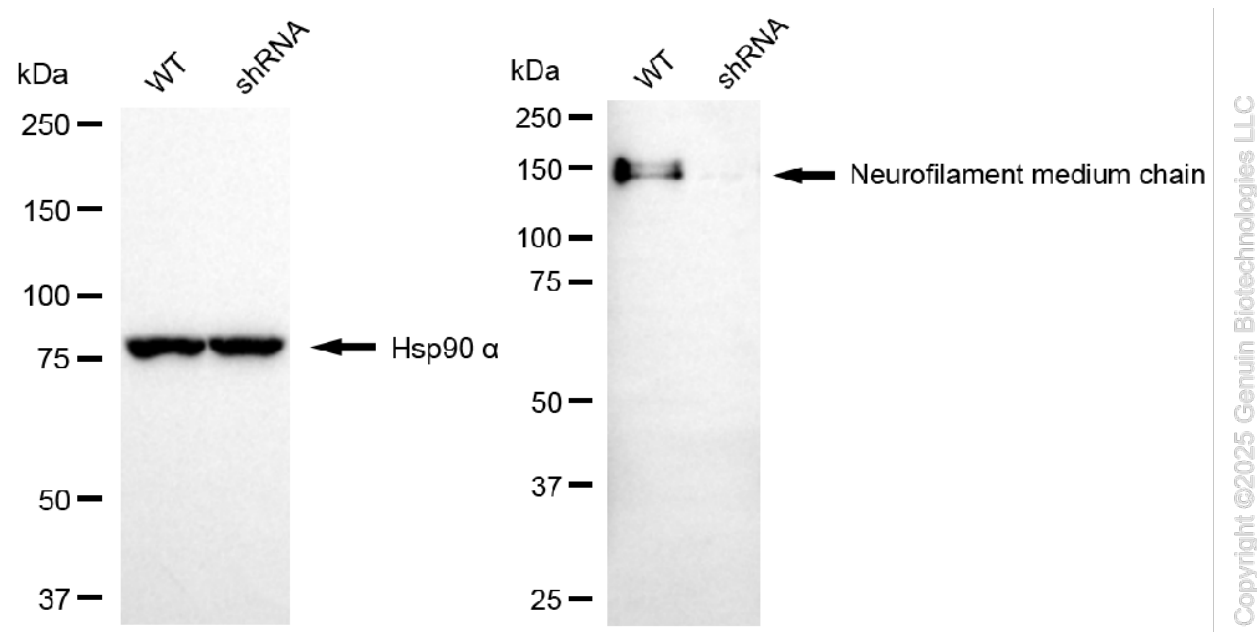
WWW.GENUINBIOTECH.COM

KD-Validated Anti-NEFM Mouse Monoclonal Antibody

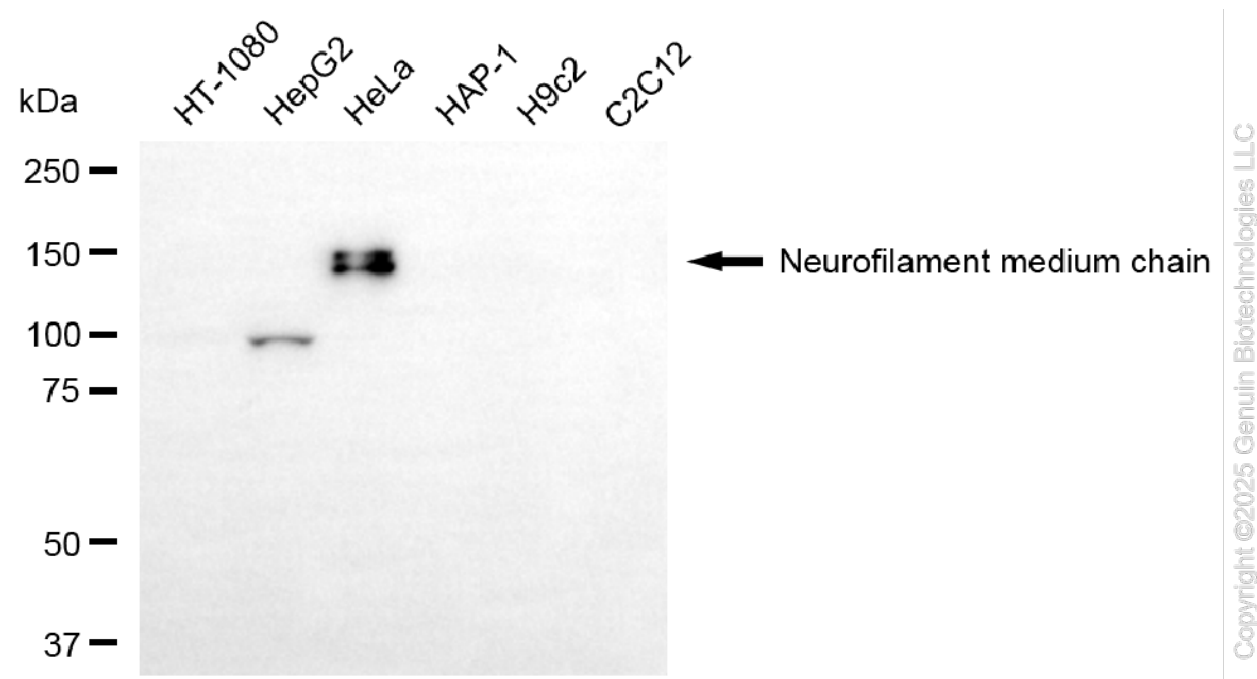
PAGE 2

Note: This product is for research use only.

Validation Data



Western blotting analysis using anti-neurofilament medium chain antibody (Cat#63462). Neurofilament medium chain expression in wild type (WT) and neurofilament medium chain (NEFM) shRNA knockdown (KD) HeLa cells with 30 μ g of total cell lysates. Hsp90 α serves as a loading control. The blot was incubated with anti-neurofilament medium chain antibody (Cat#63462, 1:1,000) and HRP-conjugated goat anti-mouse secondary antibody (Cat#101, 1:20,000) respectively. Image was developed using NaQ™ ECL Substrate Kit (Cat#716).



SUPPORT

SUPPORT@GENUINBIOTECH.COM
TEL: +1-540-855-7041

ORDERS

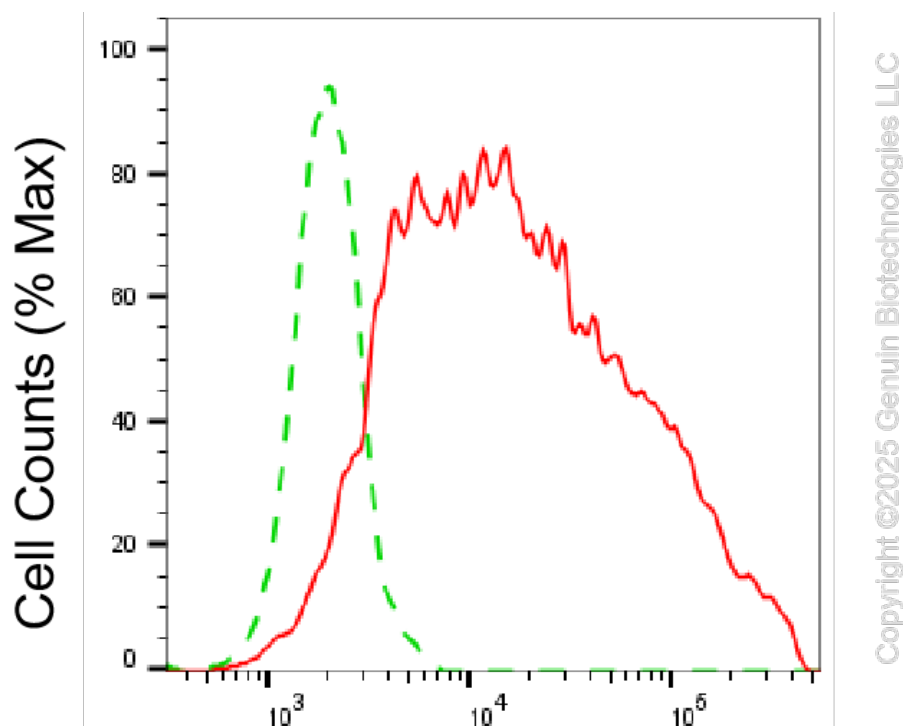
SALES@GENUINBIOTECH.COM
FAX: +1-540-855-7041

WWW.GENUINBIOTECH.COM

KD-Validated Anti-NEFM Mouse Monoclonal Antibody

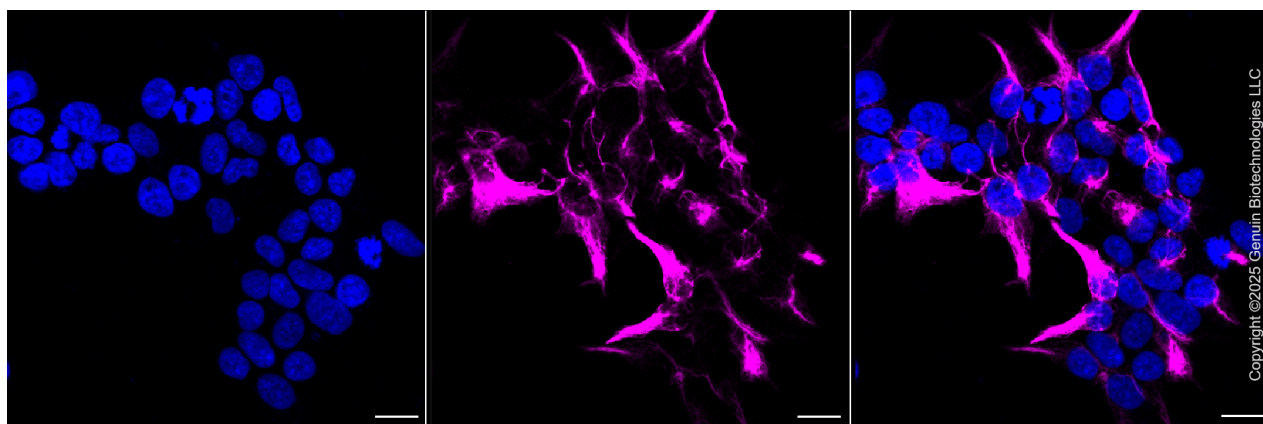
PAGE 3

Western blotting analysis using anti-neurofilament medium chain antibody (Cat#63462). Total cell lysates (30 µg) from various cell lines were loaded and separated by SDS-PAGE. The blot was incubated with anti-neurofilament medium chain antibody (Cat#63462, 1:5,000) and HRP-conjugated goat anti-mouse secondary antibody (Cat#101, 1:20,000) respectively. Image was developed using FeQ™ ECL Substrate Kit (Cat#226).



Neurofilament medium chain-Alexa Fluor® 647

Flow cytometric analysis of Neurofilament medium chain expression in HeLa cells using anti-Neurofilament medium chain antibody (Cat#63462, 1:2,000). Green, isotype control; red, Neurofilament medium chain.



Immunocytochemical staining of HeLa cells with anti-Neurofilament medium chain antibody (Cat#63462, 1:1,000). Nuclei were stained blue with DAPI; Neurofilament medium chain was

SUPPORT

SUPPORT@GENUINBIOTECH.COM
TEL: +1-540-855-7041

ORDERS

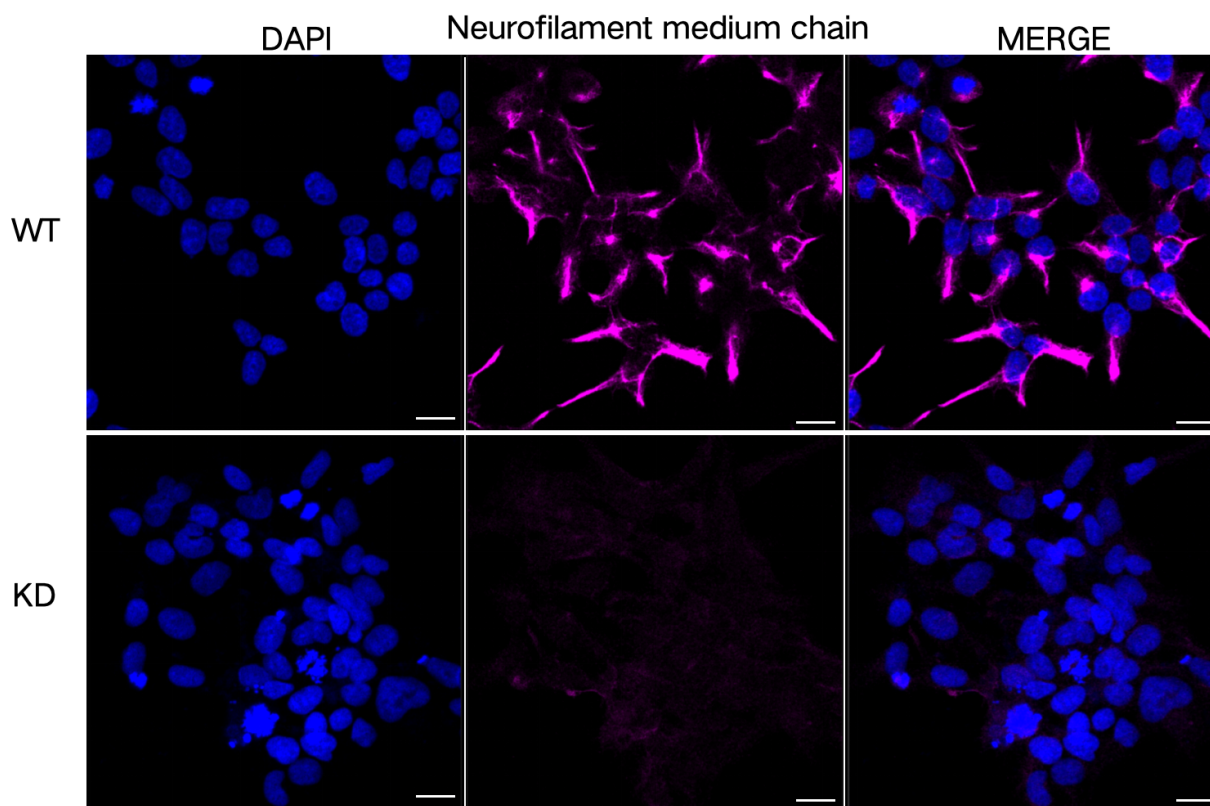
SALES@GENUINBIOTECH.COM
FAX: +1-540-855-7041

WWW.GENUINBIOTECH.COM

KD-Validated Anti-NEFM Mouse Monoclonal Antibody

PAGE 4

stained magenta with Alexa Fluor® 647. Images were taken using Leica stellaris 5. Protein abundance based on laser Intensity and Smart Gain: Medium. Scale bar, 20 µm.



Immunocytochemical staining of HeLa cells using anti-Neurofilament medium chain antibody (Cat#63462, 1:1,000), Top panel: wild-type (WT); Bottom panel: Neurofilament medium chain shRNA knockdown (KD). Nuclei were stained blue with DAPI; Neurofilament medium chain was stained magenta with Alexa Fluor® 647. Scale bar, 20 µm.

SUPPORT

SUPPORT@GENUINBIOTECH.COM
TEL: +1-540-855-7041

ORDERS

SALES@GENUINBIOTECH.COM
FAX: +1-540-855-7041

WWW.GENUINBIOTECH.COM