

# KD-Validated Anti-NFKBIA Mouse Monoclonal Antibody



**Catalog #: 63464**

## Aliases

I-kappa-B-alpha; NFKBI; NFKBIA; NF-kappaB inhibitor alpha; IKBA; IkappaBalph; MAD3; RL/IF-1

## Background

Gene Name: NFKBIA

NCBI Gene Entry: [4792](#)

UniProt Entry: [P25963](#)

## Application Information

Molecular Weight: Predicted, 36 kDa, observed, 36 kDa

Clonality: Mouse monoclonal antibody

Clone ID: 24GB5755

Species Reactivity: Human, mouse

Applications Tested: Western blotting (WB), flow cytometry (FCM), immunocytochemistry (IC)

## Immunogen

Recombinant protein of human NFKBIA

## Isotype

Mouse IgG1

## Storage Buffer

Supplied in PBS (pH 7.4) containing 50% glycerol, and 0.02% sodium azide.

## Storage

Store at -20 °C for one year.

## Recommended Dilutions

Western Blotting (WB): 1:2,500-1:5,000

Immunocytochemistry (IC): 1:100-1:1,000

Flow Cytometry (FCM) : 1:2,000

**Note:** This product is for research use only.

## Validation Data

---

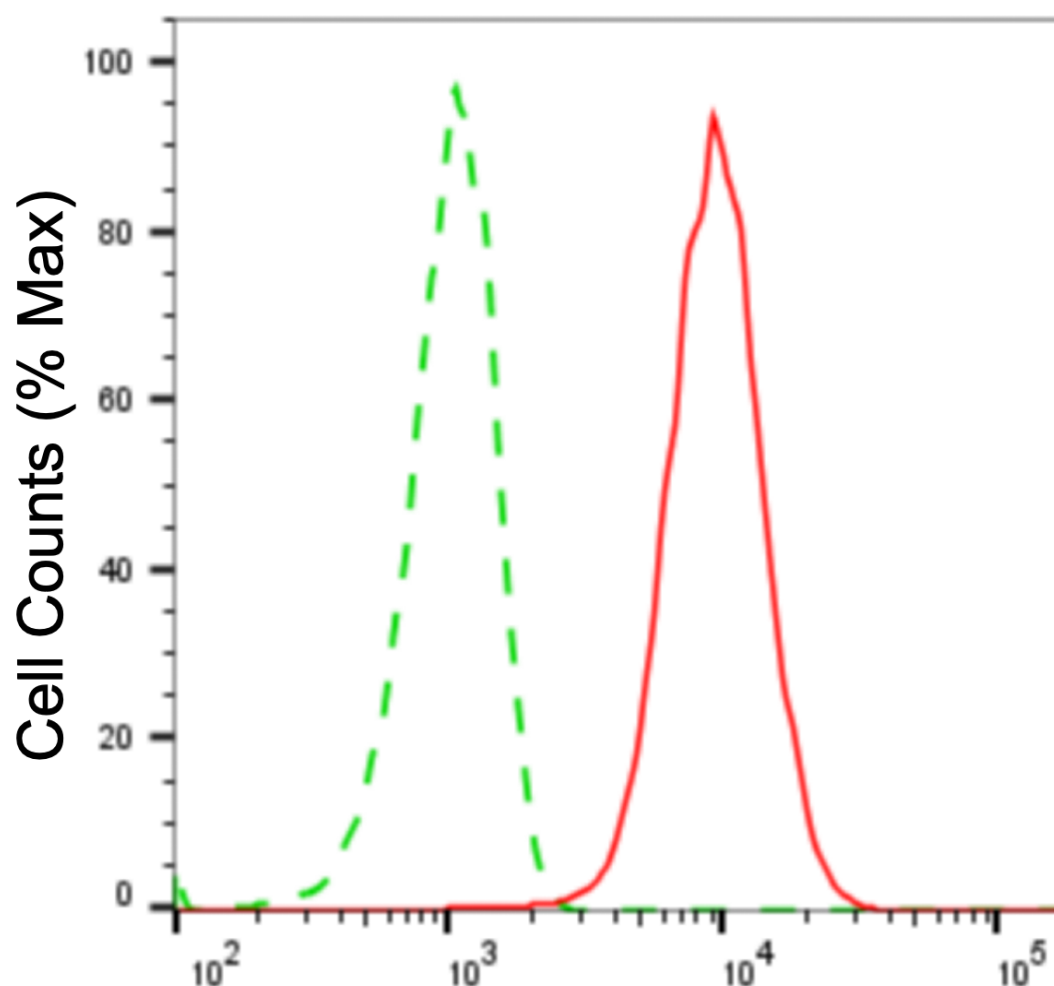
### SUPPORT

SUPPORT@GENUINBIOTECH.COM  
TEL: +1-540-855-7041

### ORDERS

SALES@GENUINBIOTECH.COM  
FAX: +1-540-855-7041

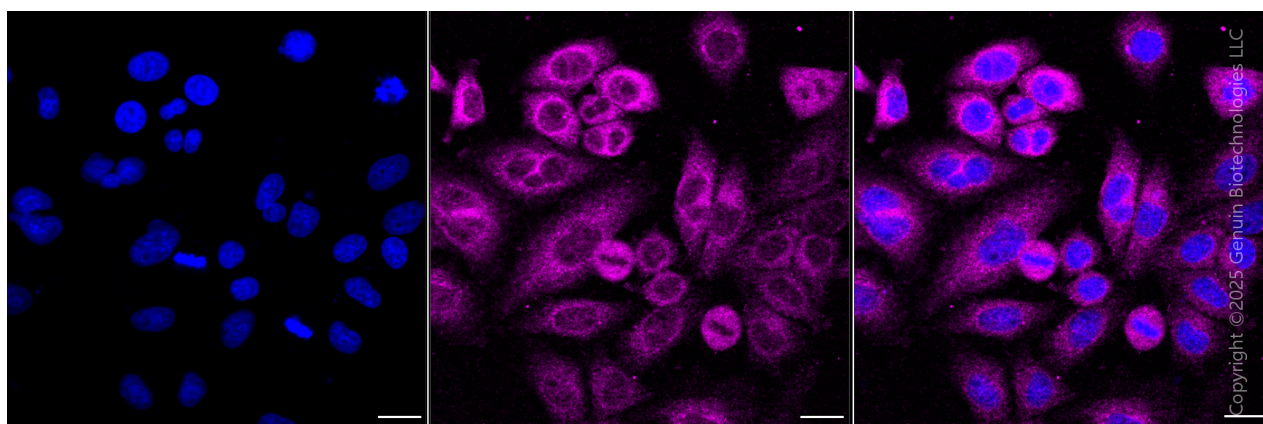
[WWW.GENUINBIOTECH.COM](http://WWW.GENUINBIOTECH.COM)



Copyright ©2025 Genuin Biotechnologies LLC

## NFKB inhibitor alpha-Alexa Fluor® 647

Flow cytometric analysis of NFKB inhibitor alpha expression in HepG2 cells using anti-NFKB inhibitor alpha antibody (Cat#63464, 1:2,000). Green, isotype control; red, NFKB inhibitor alpha.



Copyright ©2025 Genuin Biotechnologies LLC

Immunocytochemical staining of HepG2 cells with anti-NFKB inhibitor alpha antibody (Cat#63464, 1:1,000). Nuclei were stained blue with DAPI; NFKB inhibitor alpha was stained

### SUPPORT

SUPPORT@GENUINBIOTECH.COM  
TEL: +1-540-855-7041

### ORDERS

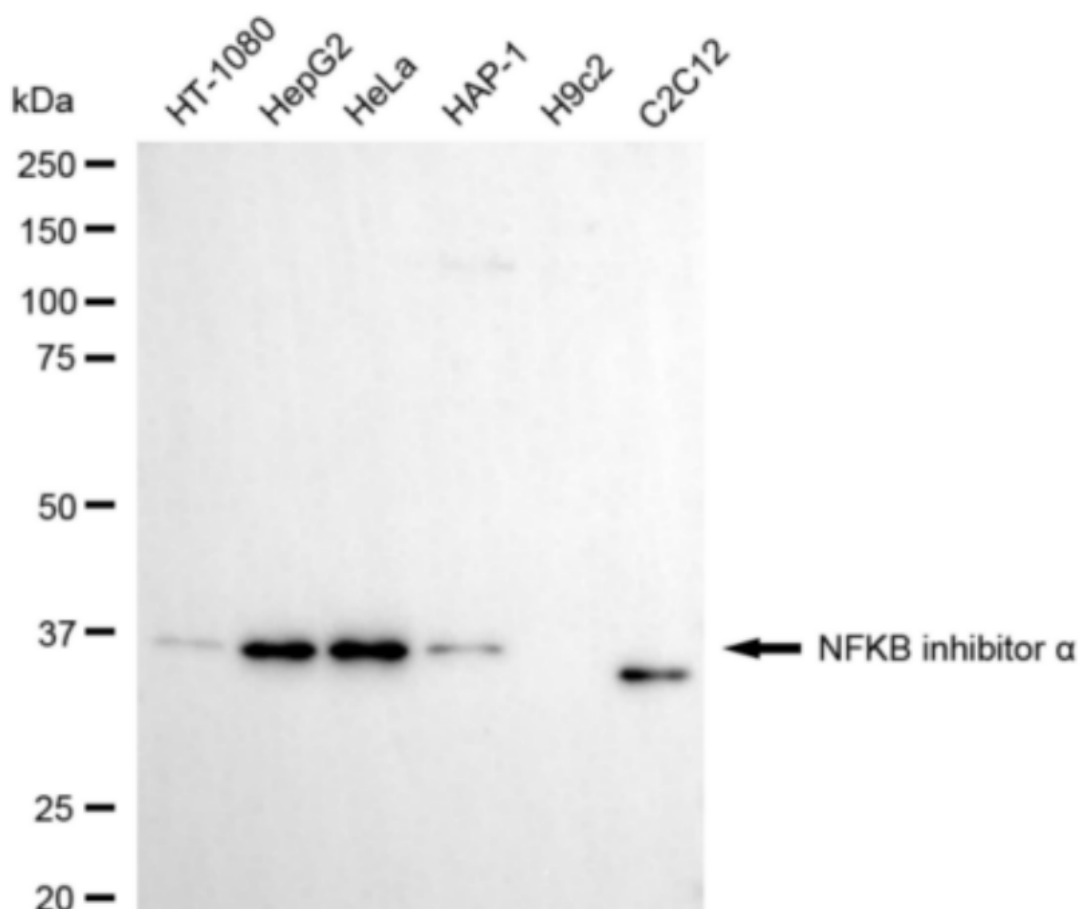
SALES@GENUINBIOTECH.COM  
FAX: +1-540-855-7041

[WWW.GENUINBIOTECH.COM](http://WWW.GENUINBIOTECH.COM)

## KD-Validated Anti-NFKBIA Mouse Monoclonal Antibody

PAGE 3

magenta with Alexa Fluor® 647. Images were taken using Leica stellaris 5. Protein abundance based on laser Intensity and Smart Gain□Low. Scale bar, 20 μm.



Copyright ©2024 Genuin Biotechnologies LLC

Western blotting analysis using anti-NFKB inhibitor alpha antibody (Cat#63464). Total cell lysates (30 μg) from various cell lines were loaded and separated by SDS-PAGE. The blot was incubated with anti-NFKB inhibitor alpha antibody (Cat#63464, 1:5,000) and HRP-conjugated goat anti-mouse secondary antibody (Cat#101, 1:20,000) respectively. Image was developed using NaQ™ ECL Substrate Kit(Cat#716).

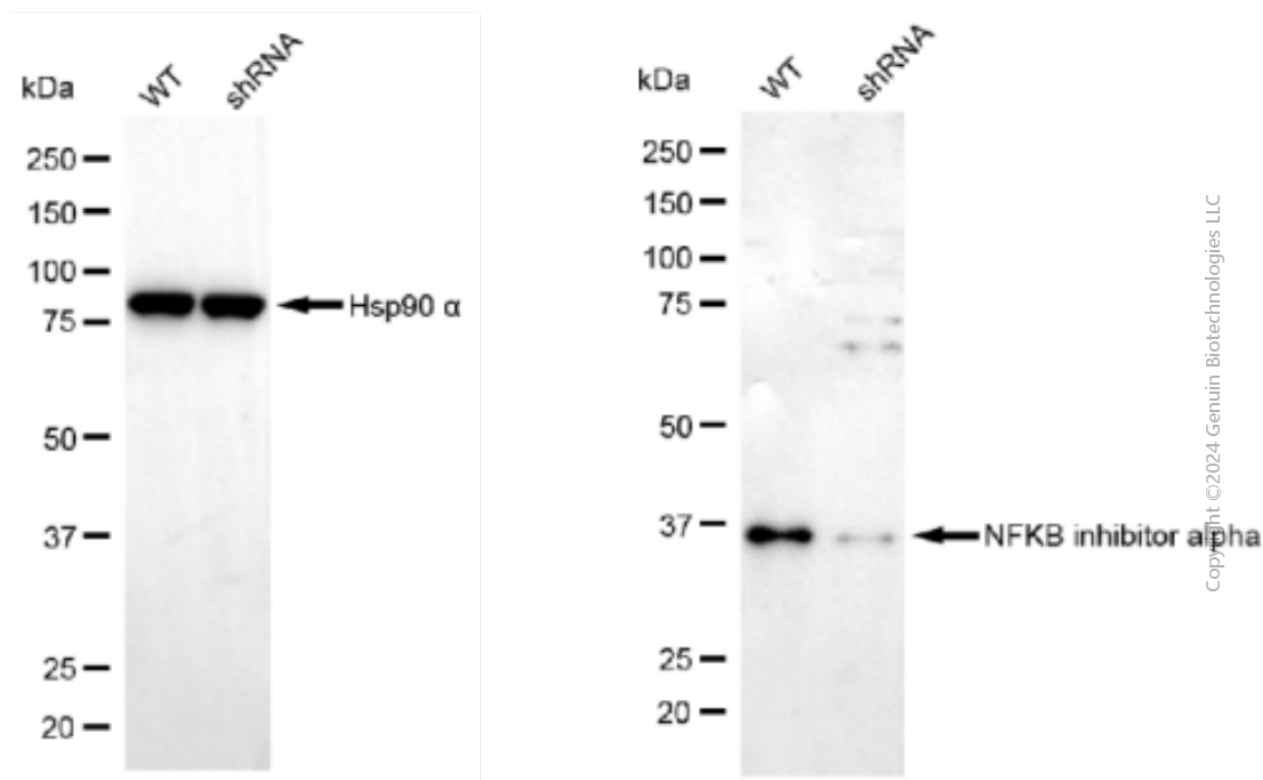
### SUPPORT

SUPPORT@GENUINBIOTECH.COM  
TEL: +1-540-855-7041

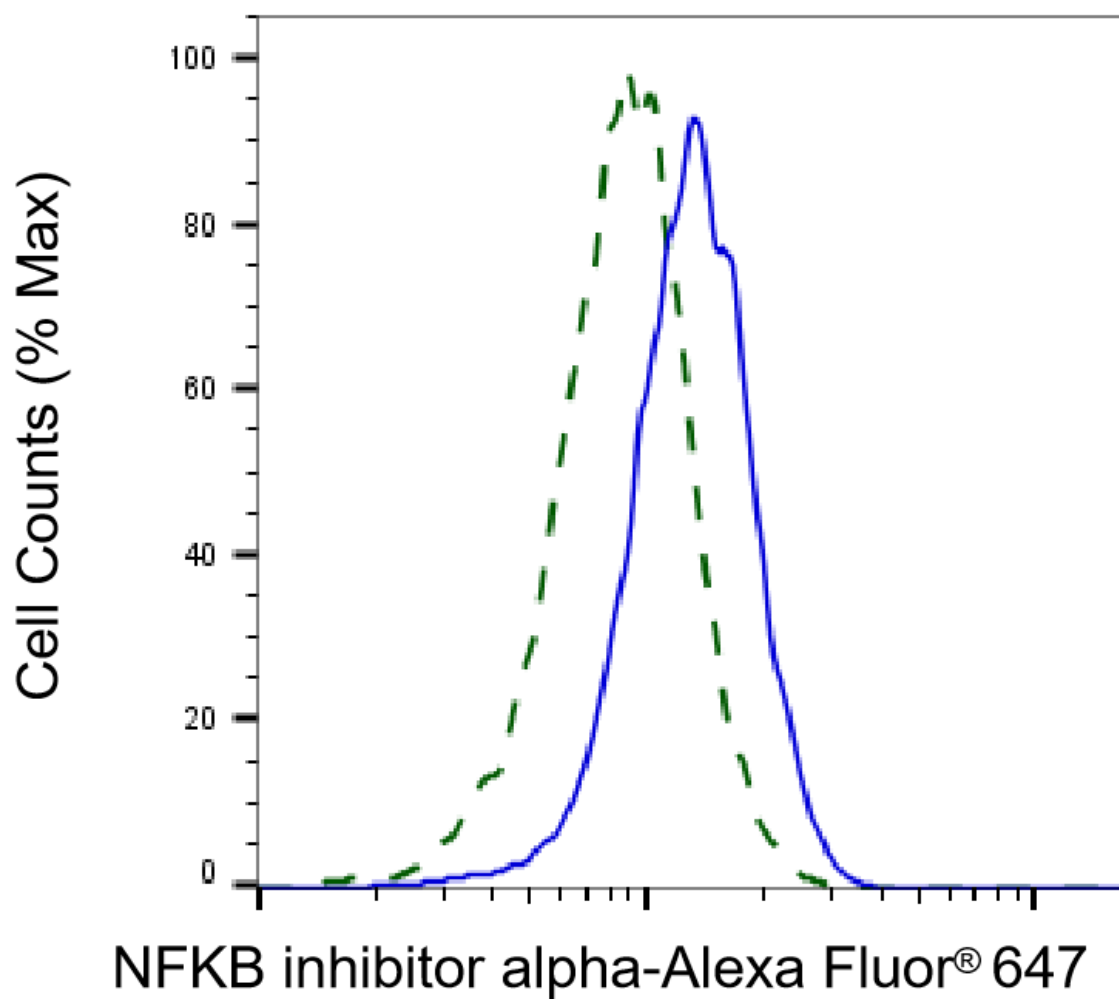
### ORDERS

SALES@GENUINBIOTECH.COM  
FAX: +1-540-855-7041

WWW.GENUINBIOTECH.COM



Western blotting analysis using anti-NFKB inhibitor alpha antibody (Cat#63464). NFKB inhibitor alpha expression in wild type (WT) and NFKB inhibitor alpha (NFKBIA) shRNA knockdown (KD) HeLa cells with 20 µg of total cell lysates. Hsp90 α serves as a loading control. The blot was incubated with anti-NFKB inhibitor alpha antibody (Cat#63464, 1:5,000) and HRP-conjugated goat anti-mouse secondary antibody (Cat#101, 1:20,000) respectively. Image was developed using NaQ™ ECL Substrate Kit (Cat#716).



Validation of NFKB inhibitor alpha knockdown using flow cytometry. Wild-type(WT, Blue) and knockdown(KD, Green) HeLa cells were stained with anti-NFKB inhibitor alpha antibody (Cat#63464, 1:2,000) and analyzed using BD flow cytometer.