

KD-Validated Anti-JUN Mouse Monoclonal Antibody



Catalog #: 63465

Aliases

JUN; Jun Proto-Oncogene, AP-1 Transcription Factor Subunit; V-Jun Avian Sarcoma Virus 17 Oncogene Homolog 2; C-Jun; AP-1; Transcription Factor AP-1 Subunit Jun; Transcription Factor Jun; Proto-Oncogene C-Jun; Activator Protein 1; Jun Oncogene; AP1; P39; V-Jun Sarcoma Virus 17 Oncogene Homolog; Jun Activation Domain Binding Protein; Enhancer-Binding Protein AP1; Transcription Factor AP-1; Proto-Oncogene CJun; CJUN

Background

Gene Name: JUN

NCBI Gene Entry: [3725](#)

UniProt Entry: [P05412](#)

Application Information

Molecular Weight: Predicted, 36 kDa, observed, 40kDa

Clonality: Mouse monoclonal antibody

Clone ID: 24GB5760

Species Reactivity: Human, mouse, rat

Applications Tested: Western blotting (WB), flow cytometry (FCM), immunocytochemistry (IC)

Immunogen

Recombinant protein of human JUN

Isotype

Mouse IgG1

Storage Buffer

Supplied in PBS (pH 7.4) containing 50% glycerol, and 0.02% sodium azide.

Storage

Store at -20 °C for one year.

Recommended Dilutions

Western Blotting (WB): 1:500-1:2,500

Flow Cytometry (FCM): 1:2,000

Immunocytochemistry (IC): 1:100-1:1,000

SUPPORT

SUPPORT@GENUINBIOTECH.COM
TEL: +1-540-855-7041

ORDERS

SALES@GENUINBIOTECH.COM
FAX: +1-540-855-7041

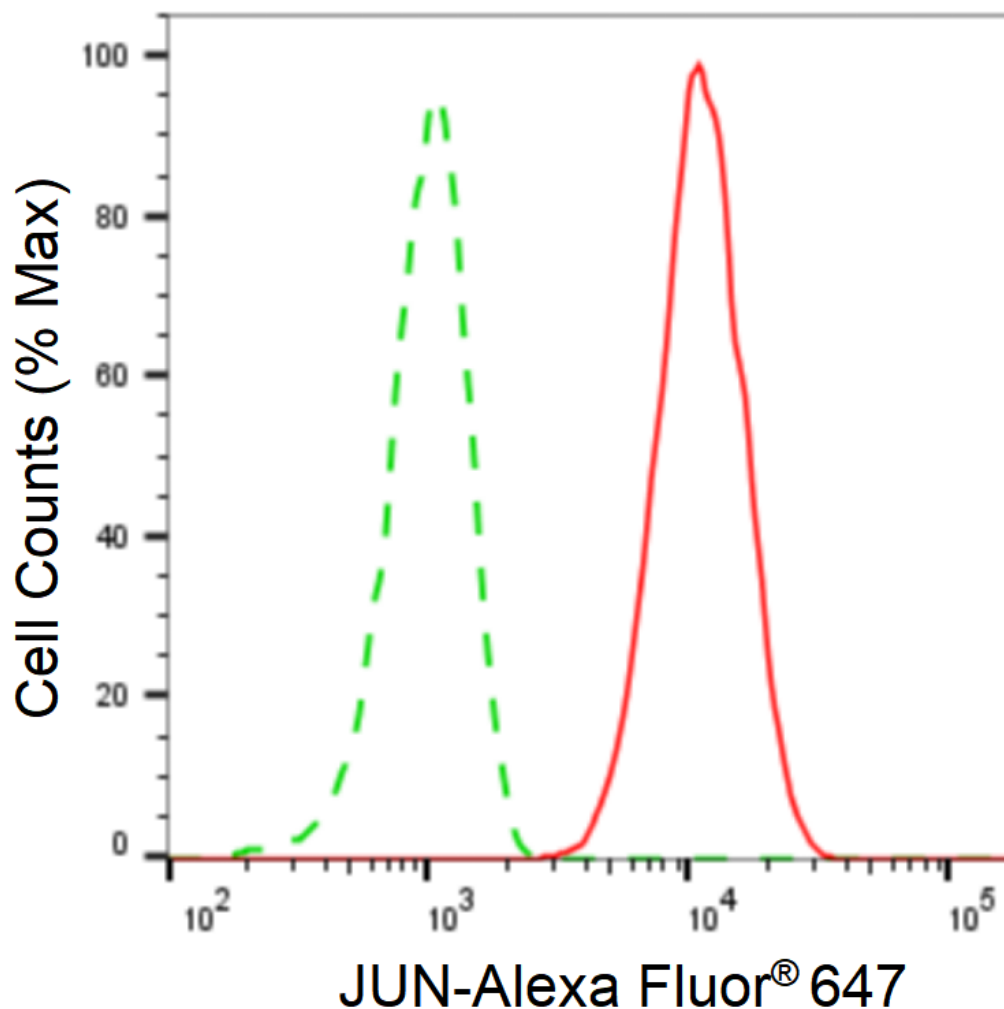
WWW.GENUINBIOTECH.COM

KD-Validated Anti-JUN Mouse Monoclonal Antibody

PAGE 2

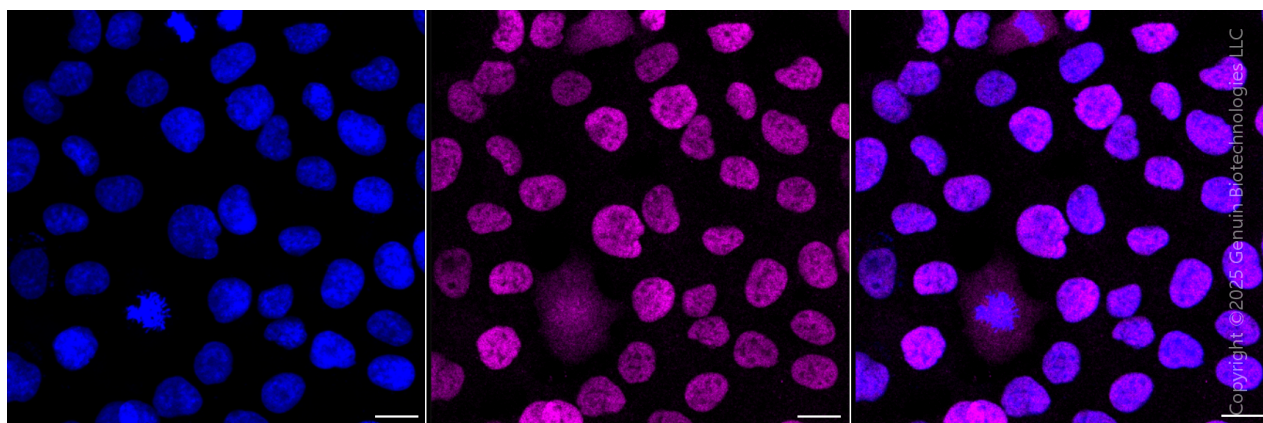
Note: This product is for research use only.

Validation Data



Copyright ©2025 Genuin Biotechnologies LLC

Flow cytometric analysis of JUN expression in HT-1080 cells using anti-JUN antibody (Cat#63465, 1:2,000). Green, isotype control; red, JUN.



SUPPORT

SUPPORT@GENUINBIOTECH.COM
TEL: +1-540-855-7041

ORDERS

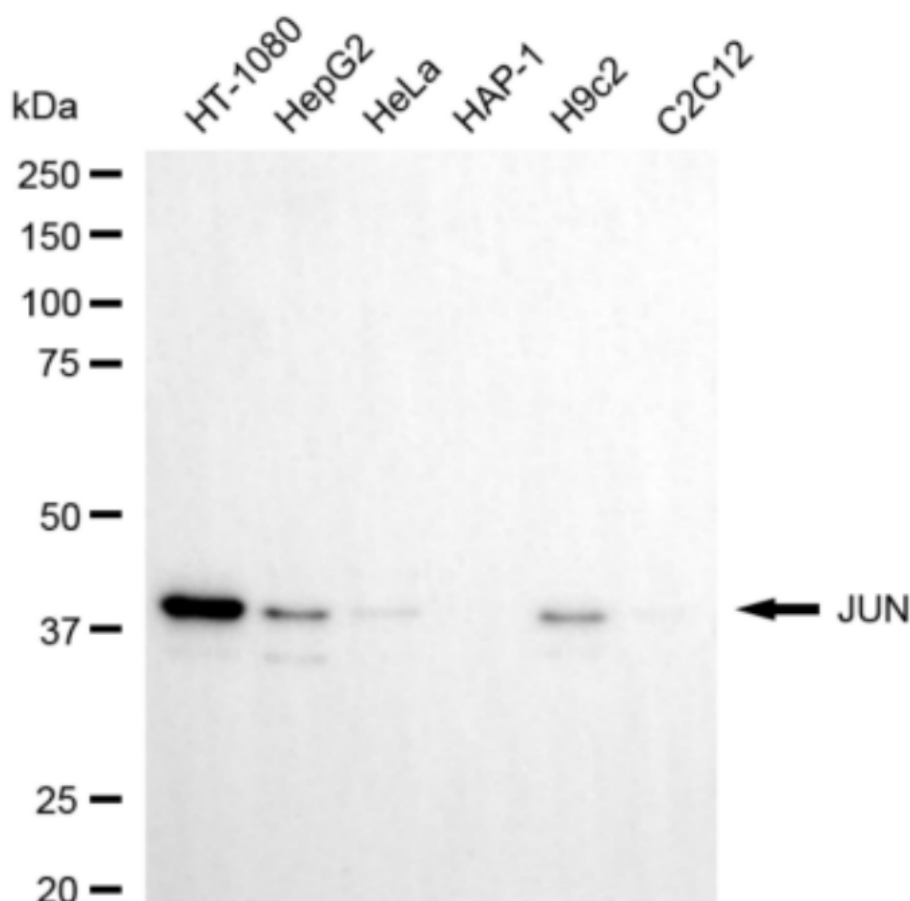
SALES@GENUINBIOTECH.COM
FAX: +1-540-855-7041

WWW.GENUINBIOTECH.COM

KD-Validated Anti-JUN Mouse Monoclonal Antibody

PAGE 3

Immunocytochemical staining of HT-1080 cells with anti-JUN antibody (Cat#63465, 1:1,000) . Nuclei were stained blue with DAPI; JUN was stained magenta with Alexa Fluor® 647. Images were taken using Leica stellaris 5. Protein abundance based on laser Intensity and Smart Gain□ Medium. Scale bar, 20 μm.



Copyright ©2024 Genuin Biotechnologies LLC

Western blotting analysis using anti-JUN antibody (Cat#63465). Total cell lysates (30 μg) from various cell lines were loaded and separated by SDS-PAGE. The blot was incubated with anti-JUN antibody (Cat#63465, 1:2,500) and HRP-conjugated goat anti-mouse secondary antibody (Cat#101, 1:20,000) respectively. Image was developed using NaQ™ ECL Substrate Kit(Cat#716).

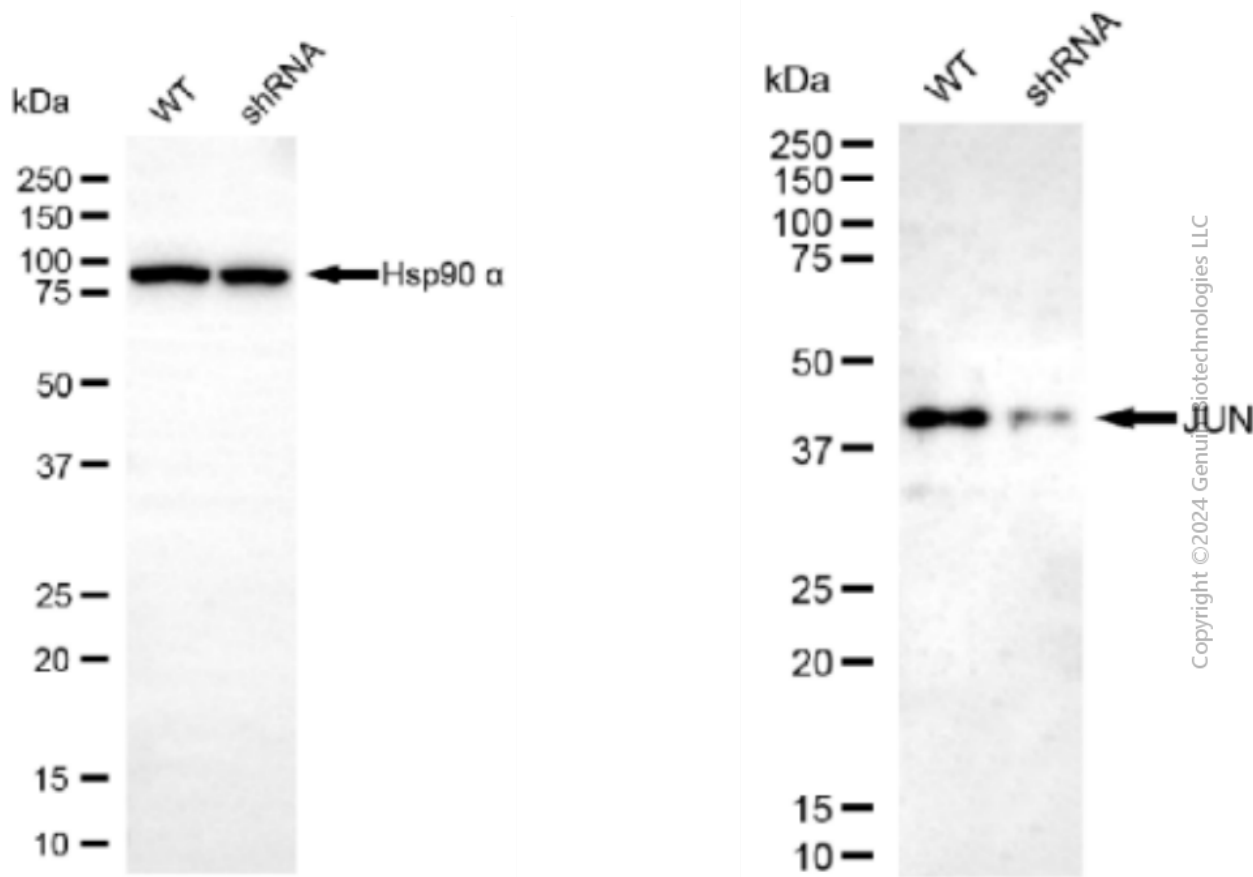
SUPPORT

SUPPORT@GENUINBIOTECH.COM
TEL: +1-540-855-7041

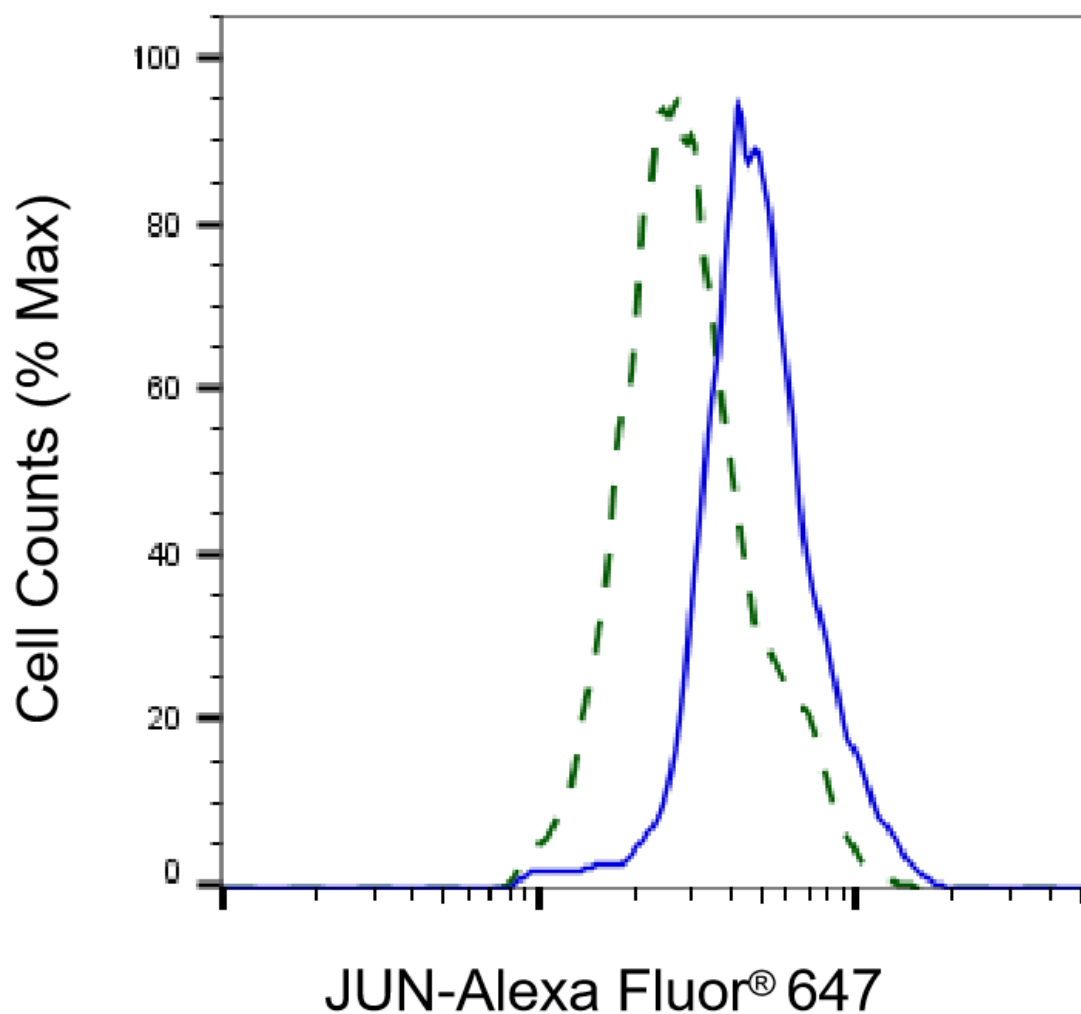
ORDERS

SALES@GENUINBIOTECH.COM
FAX: +1-540-855-7041

WWW.GENUINBIOTECH.COM



Western blotting analysis using anti-JUN antibody (Cat#63465). JUN expression in wild type (WT) and JUN shRNA knockdown (KD) C2C12 cells with 20 μ g of total cell lysates. Hsp90 α serves as a loading control. The blot was incubated with anti-JUN antibody (Cat#63465, 1:5,000) and HRP-conjugated goat anti-mouse secondary antibody (Cat#101, 1:20,000) respectively. Image was developed using NaQ™ ECL Substrate Kit (Cat#716).



Copyright ©2025 Genuin Biotechnologies LLC

Validation of JUN knockdown using flow cytometry. Wild-type(WT, Blue) and knockdown(KD, Green) C2C12 cells were stained with anti-JUN antibody (Cat#63465, 1:2,000) and analyzed using BD flow cytometer.