

KD-Validated Anti-Catenin Delta 1 Mouse Monoclonal Antibody



Catalog #: 63468

Aliases

CTNND1; Catenin Delta 1; KIAA0384; P120; Catenin (Cadherin-Associated Protein), Delta 1; Cadherin-Associated Src Substrate; Catenin Delta-1; P120 Catenin; P120CAS; P120CTN; CTNND; CAS; P120(CAS); P120(CTN); P120(Ctn); P120(Cas); P120cas; P120ctn; BCDS2

Background

Gene Name: CTNND1

NCBI Gene Entry: [1500](#)

UniProt Entry: [O60716](#)

Application Information

Molecular Weight: Predicted, 108 kDa, observed, 108 kDa

Clonality: Mouse monoclonal antibody

Clone ID: 24GB5775

Species Reactivity: Human, mouse, rat

Applications Tested: Western blotting (WB), flow cytometry (FCM), immunocytochemistry (IC)

Immunogen

Recombinant protein of human CTNND1

Isotype

Mouse IgG1

Storage Buffer

Supplied in PBS (pH 7.4) containing 50% glycerol, and 0.02% sodium azide.

Storage

Store at -20 °C for one year.

Recommended Dilutions

Western Blotting (WB): 1:1,000-1:5,000

Flow Cytometry (FCM): 1:2,000

Immunocytochemistry (IC): 1:100-1:1,000

Note: This product is for research use only.

SUPPORT

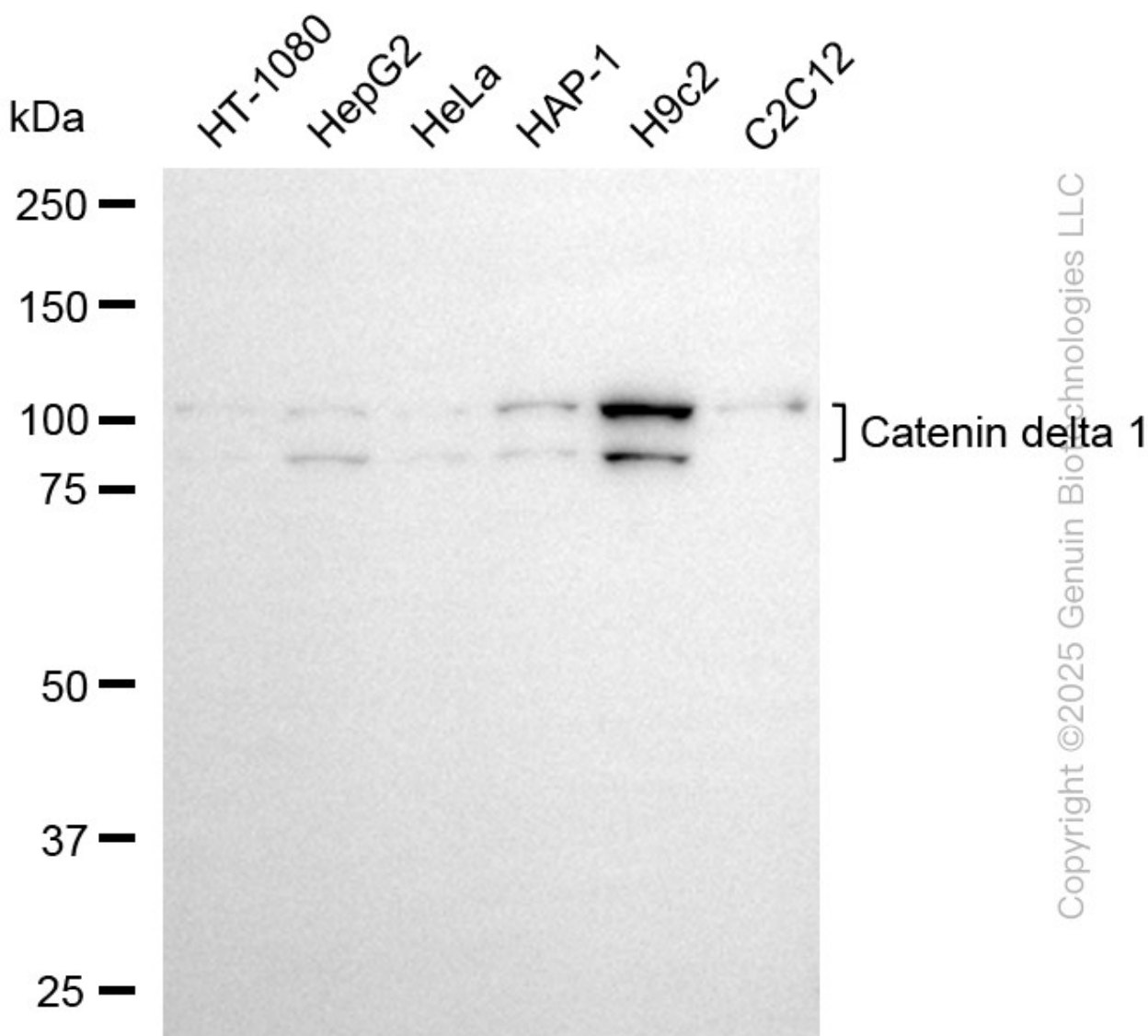
SUPPORT@GENUINBIOTECH.COM
TEL: +1-540-855-7041

ORDERS

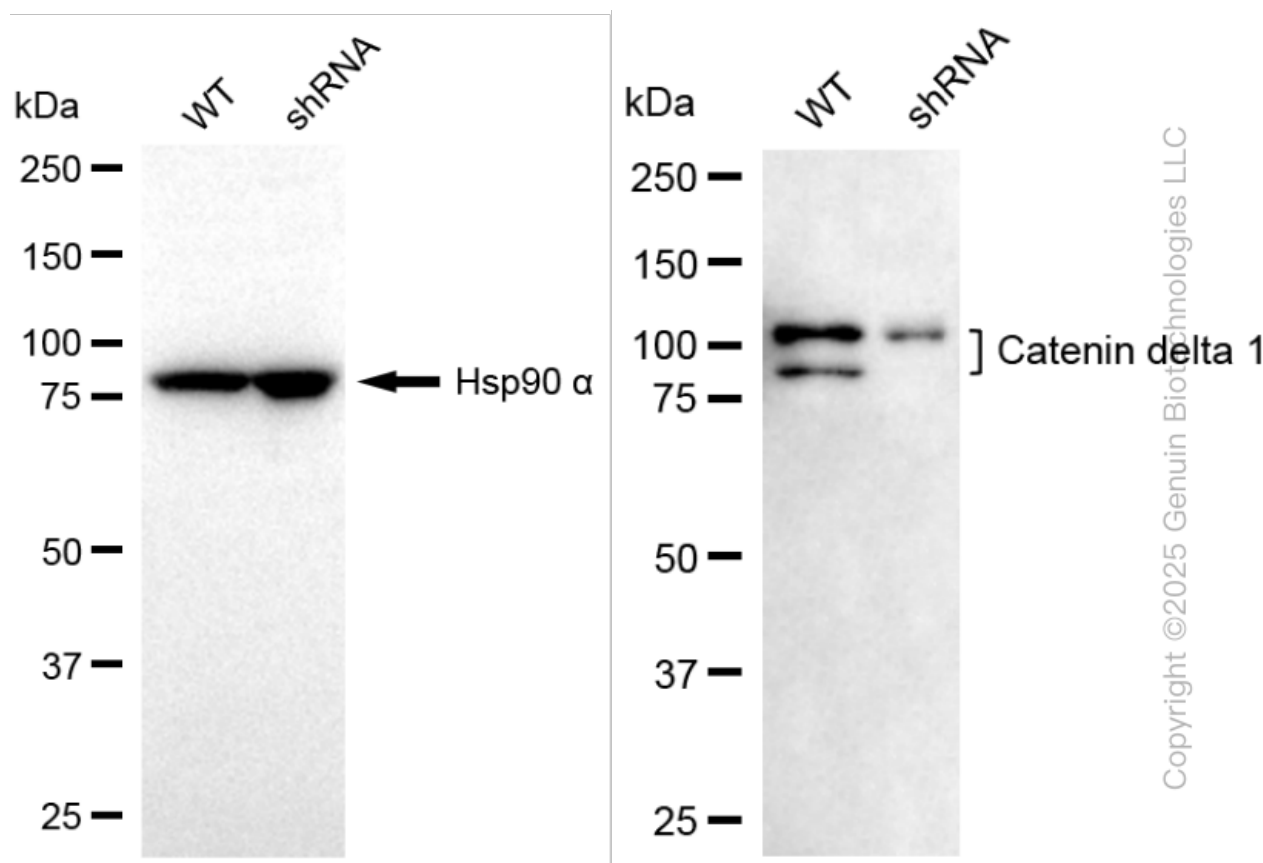
SALES@GENUINBIOTECH.COM
FAX: +1-540-855-7041

WWW.GENUINBIOTECH.COM

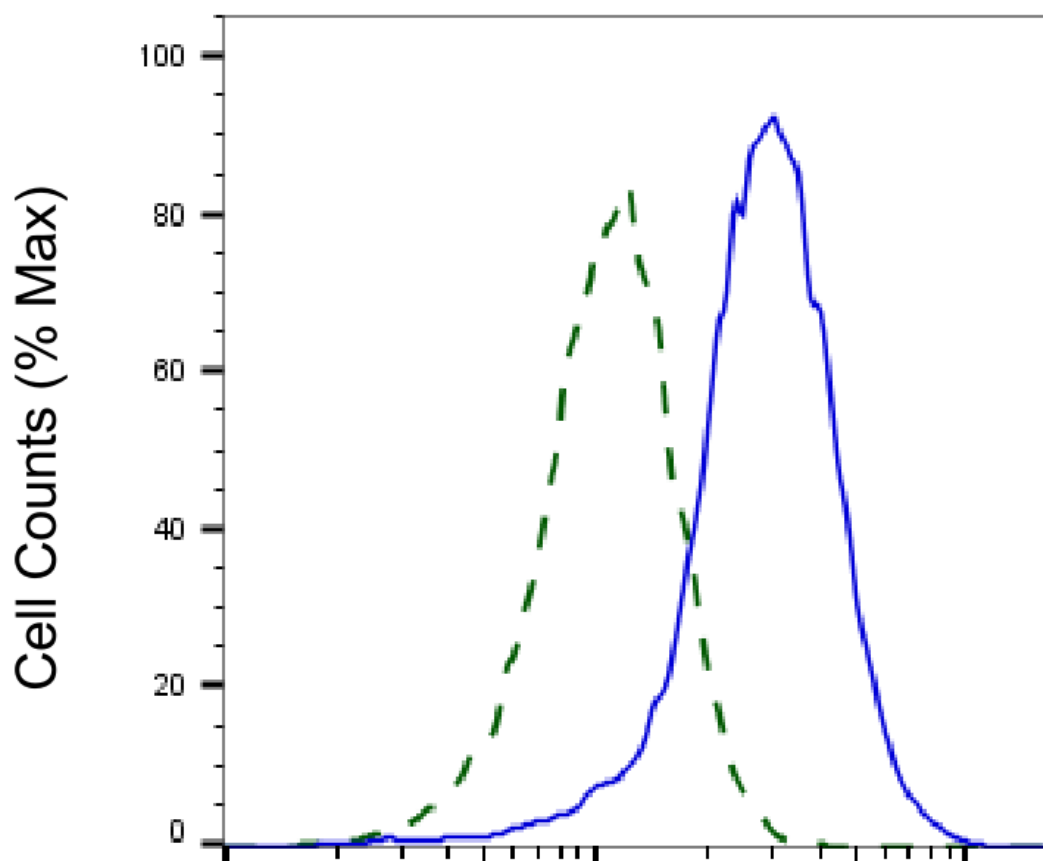
Validation Data



Western blotting analysis using anti-catenin delta 1 antibody (Cat#63468). Total cell lysates (30 µg) from various cell lines were loaded and separated by SDS-PAGE. The blot was incubated with anti-catenin delta 1 antibody (Cat#63468, 1:5,000) and HRP-conjugated goat anti-mouse secondary antibody (Cat#101, 1:20,000) respectively. Image was developed using NaQ™ ECL Substrate Kit(Cat#716).



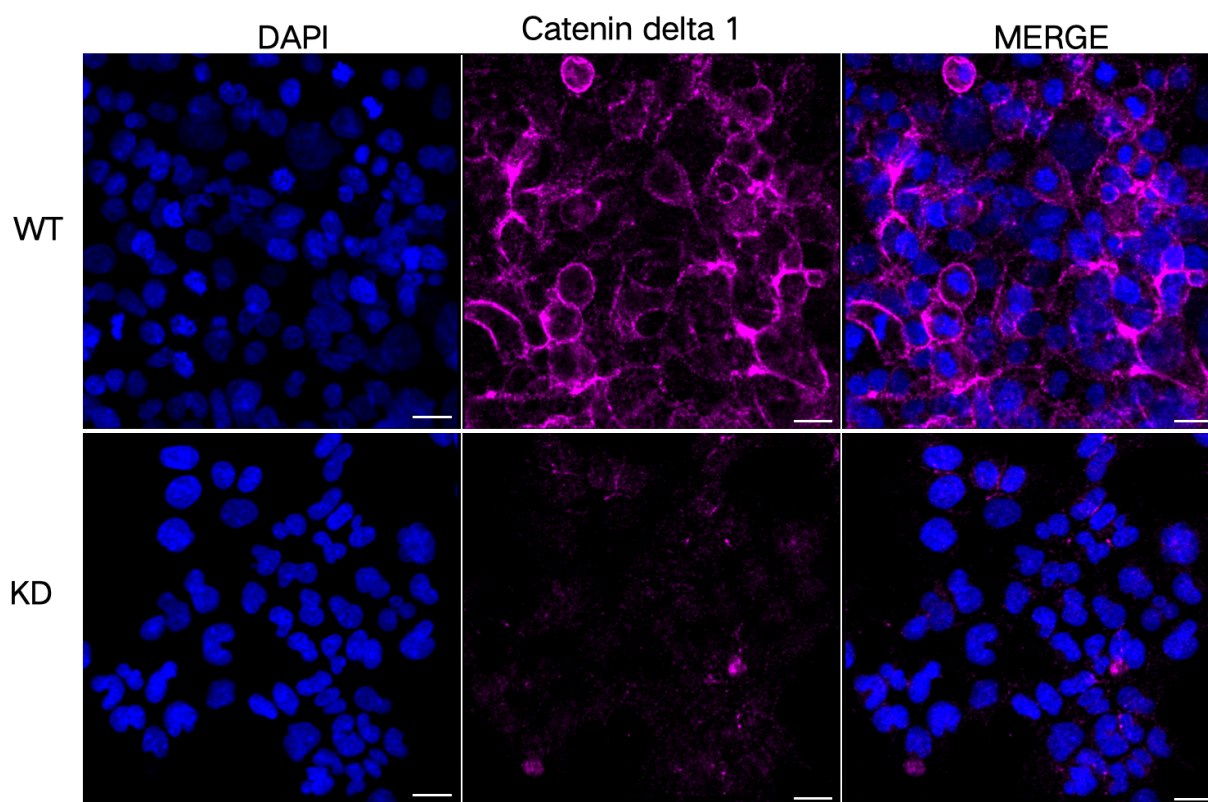
Western blotting analysis using anti-catenin delta 1 antibody (Cat#63468). Catenin delta 1 expression in wild type (WT) and catenin delta 1 (CTNND1) shRNA knockdown (KD) HeLa cells with 30 µg of total cell lysates. Hsp90 α serves as a loading control. The blot was incubated with anti-catenin delta 1 antibody (Cat#63468, 1:1,000) and HRP-conjugated goat anti-mouse secondary antibody (Cat#101, 1:20,000) respectively. Image was developed using FeQ™ ECL Substrate Kit (Cat#226).



Copyright ©2025 Genuin Biotechnologies LLC

Catenin delta 1-Alexa Fluor® 647

Validation of Catenin delta 1 knockdown using flow cytometry. Wild-type(WT, Blue) and knockdown(KD, Green) HeLa cells were stained with anti-Catenin delta 1 antibody (Cat#63468, 1:2,000) and analyzed using BD flow cytometer.



Immunocytochemical staining of HeLa cells using anti-Catenin delta 1 antibody (Cat#63468, 1:1,000), Top panel: wild-type (WT); Bottom panel: Catenin delta 1 shRNA knockdown (KD). Nuclei were stained blue with DAPI; Catenin delta 1 was stained magenta with Alexa Fluor® 647. Scale bar, 20 μ m.