

KD-Validated Anti-Glutamate-ammonia ligase Recombinant Rabbit Monoclonal Antibody



Catalog #: 63474

Aliases

Glutamate-Ammonia Ligase; Glutamine Synthetase; GLNS; Palmitoyltransferase GLUL; EC 6.3.1.2; GS; Glutamate-Ammonia Ligase (Glutamine Synthase); Cell Proliferation-Inducing Protein; Proliferation-Inducing Protein; Glutamate--Ammonia Ligase; Glutamate Decarboxylase; Glutamine Synthase; EC 2.3.1.225; PIG43; PIG59

Background

Gene Name: GLUL

NCBI Gene Entry: [2752](#)

UniProt Entry: [P15104](#)

Application Information

Molecular Weight: Predicted, 42 kDa, observed, 42 kDa

Clonality: Rabbit monoclonal antibody

Clone ID: 23GB1345

Species Reactivity: Human, mouse, rat

Applications Tested: Western blotting (WB), flow cytometry (FCM), immunocytochemistry (IC), immunohistochemistry (IHC)

Immunogen

A synthesized peptide derived from human Glutamine Synthetase

Isotype

Rabbit IgG

Storage Buffer

Supplied in PBS (pH 7.4) containing 50% glycerol, and 0.02% sodium azide.

Storage

Store at -20 °C for one year.

Recommended Dilutions

Western Blotting (WB): 1:1,000-1:5,000

Flow Cytometry (FCM): 1:2,000

Immunocytochemistry (IC): 1:100-1:1,000

Immunohistochemistry (IHC): 1:100-1:200

SUPPORT

SUPPORT@GENUINBIOTECH.COM
TEL: +1-540-855-7041

ORDERS

SALES@GENUINBIOTECH.COM
FAX: +1-540-855-7041

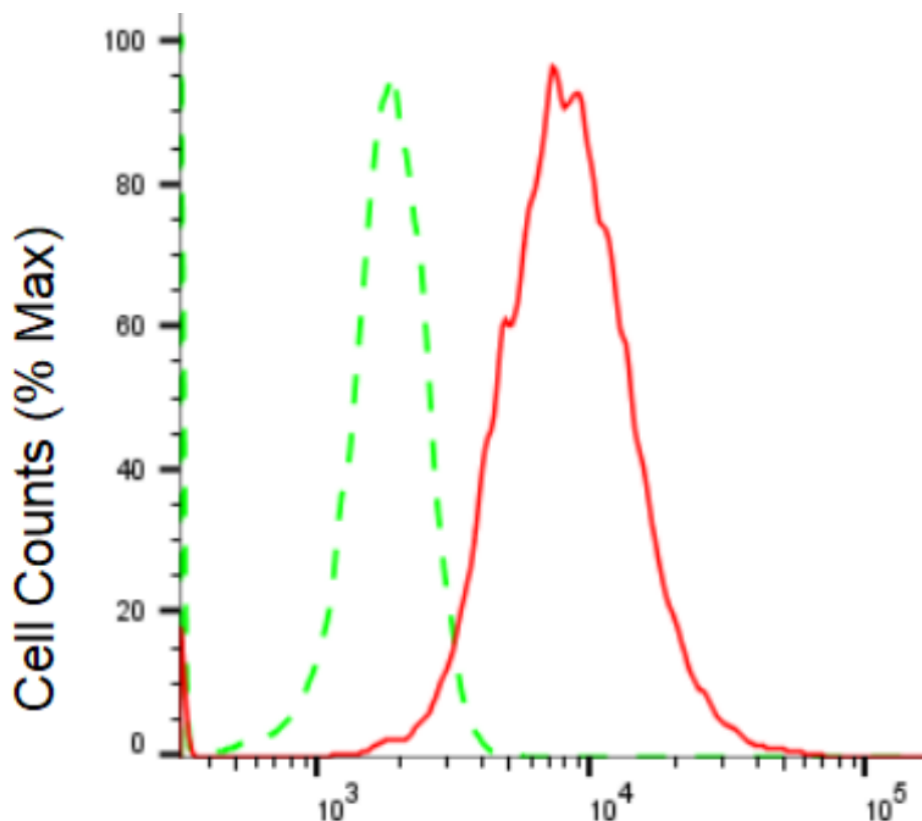
WWW.GENUINBIOTECH.COM

KD-Validated Anti-Glutamate-ammonia ligase Recombinant Rabbit Monoclonal Antibody

PAGE 2

Note: This product is for research use only.

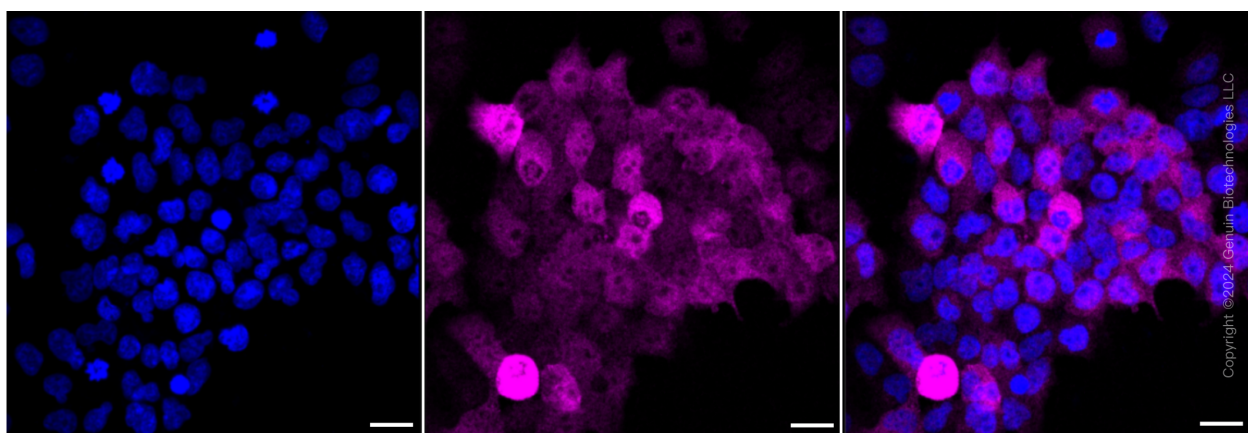
Validation Data



Copyright ©2024 Genuin Biotechnologies LLC

Glutamate-ammonia ligase-Alexa Fluor® 647

Flow cytometric analysis of Glutamate-ammonia ligase expression in HeLa cells using Glutamate-ammonia ligase antibody (Cat#63474, 1:2,000). Green, isotype control; red, Glutamate-ammonia ligase.



Copyright ©2024 Genuin Biotechnologies LLC

Immunocytochemical staining of HeLa cells with Glutamate-ammonia ligase antibody

SUPPORT

SUPPORT@GENUINBIOTECH.COM
TEL: +1-540-855-7041

ORDERS

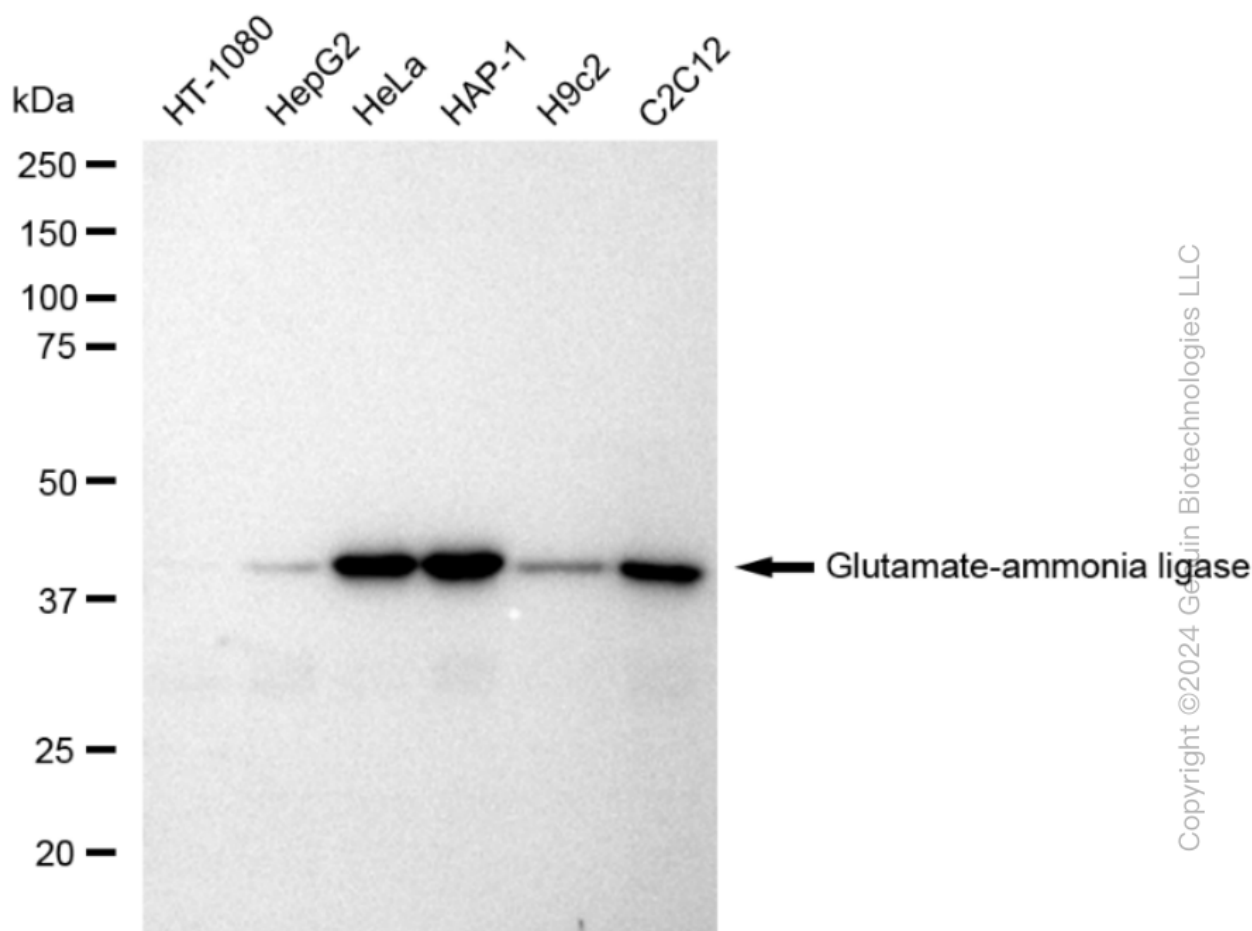
SALES@GENUINBIOTECH.COM
FAX: +1-540-855-7041

WWW.GENUINBIOTECH.COM

KD-Validated Anti-Glutamate-ammonia ligase Recombinant Rabbit Monoclonal Antibody

PAGE 3

(Cat#63474, 1:1,000). Nuclei were stained blue with DAPI; Glutamate-ammonia ligase was stained magenta with Alexa Fluor® 647. Images were taken using Leica stellaris 5. Protein abundance based on laser Intensity and smart gain: Medium. Scale bar: 20 μ m.



Western blotting analysis using anti-Glutamate-ammonia ligase antibody (Cat#63474). Total cell lysates (30 μ g) from various cell lines were loaded and separated by SDS-PAGE. The blot was incubated with anti-Glutamate-ammonia ligase antibody (Cat#63474, 1:5,000) and HRP-conjugated goat anti-rabbit secondary antibody (Cat#201, 1:20,000) respectively. Image was developed using FeQ™ ECL Substrate Kit (Cat#226).

SUPPORT

SUPPORT@GENUINBIOTECH.COM
TEL: +1-540-855-7041

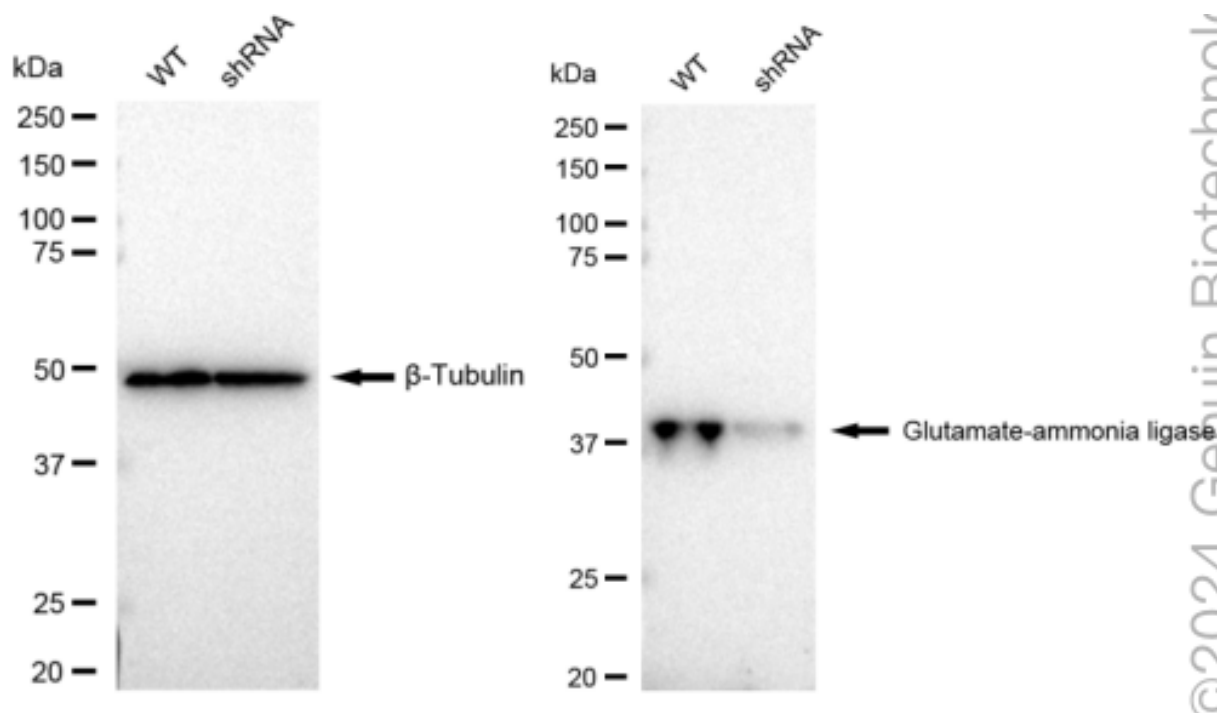
ORDERS

SALES@GENUINBIOTECH.COM
FAX: +1-540-855-7041

WWW.GENUINBIOTECH.COM

KD-Validated Anti-Glutamate-ammonia ligase Recombinant Rabbit Monoclonal Antibody

PAGE 4



Western blotting analysis using anti-Glutamate-ammonia ligase antibody (Cat#63474). Glutamate-ammonia ligase expression in wild type (WT) and Glutamate-ammonia ligase shRNA knockdown (KD) HeLa cells with 30 μ g of total cell lysates. β -Tubulin serves as a loading control. The blot was incubated with anti-Glutamate-ammonia ligase antibody (Cat#63474, 1:5,000) and HRP-conjugated goat anti-rabbit secondary antibody (Cat#201, 1:20,000) respectively. Image was developed using FeQTM ECL Substrate Kit (Cat#226).

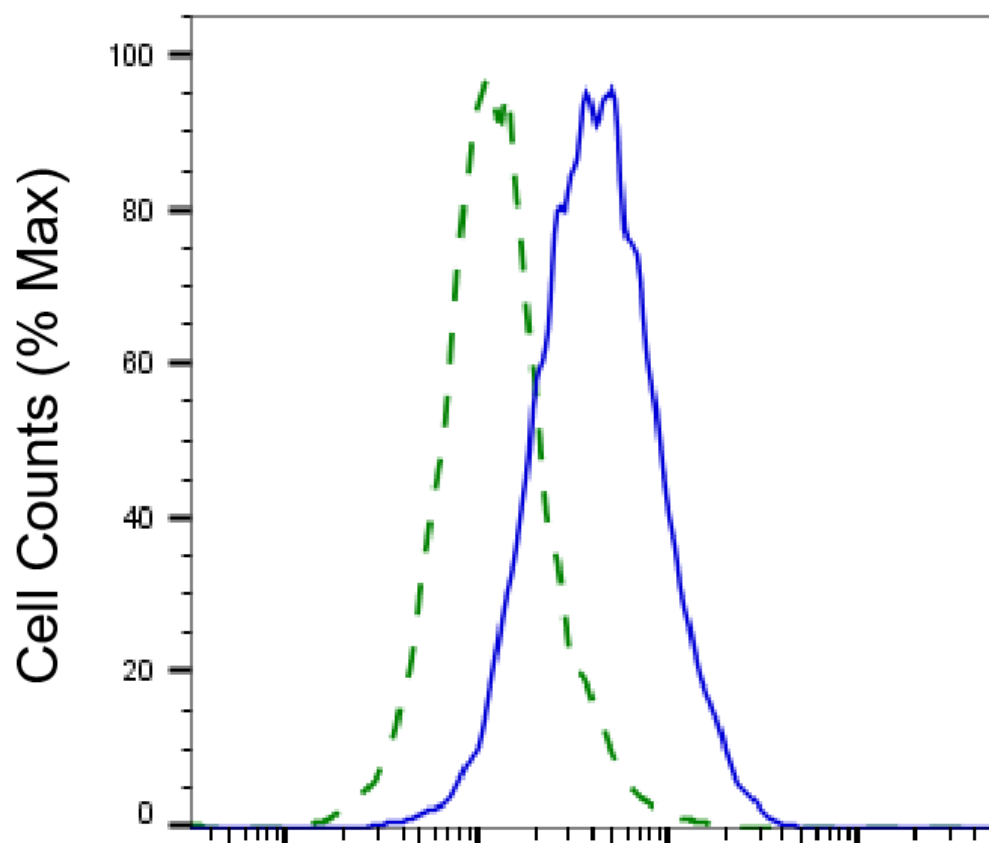
SUPPORT

SUPPORT@GENUINBIOTECH.COM
TEL: +1-540-855-7041

ORDERS

SALES@GENUINBIOTECH.COM
FAX: +1-540-855-7041

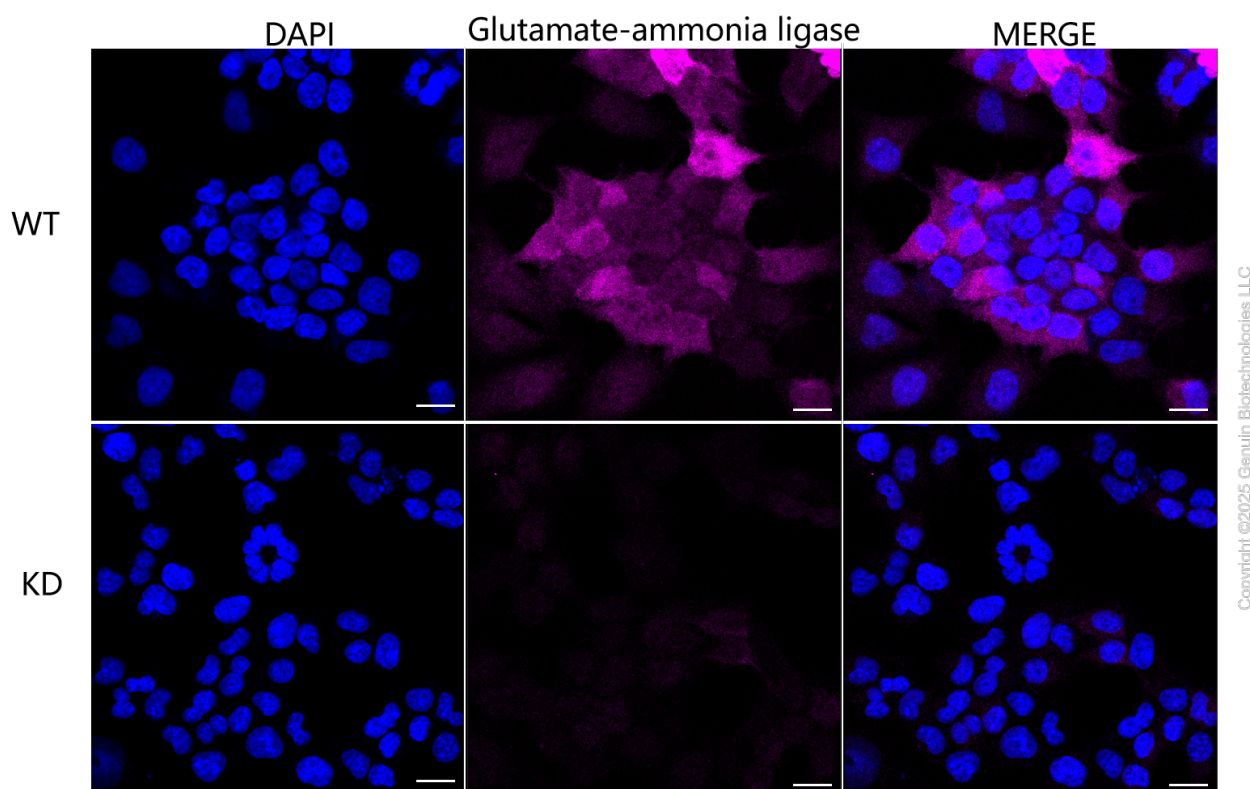
WWW.GENUINBIOTECH.COM



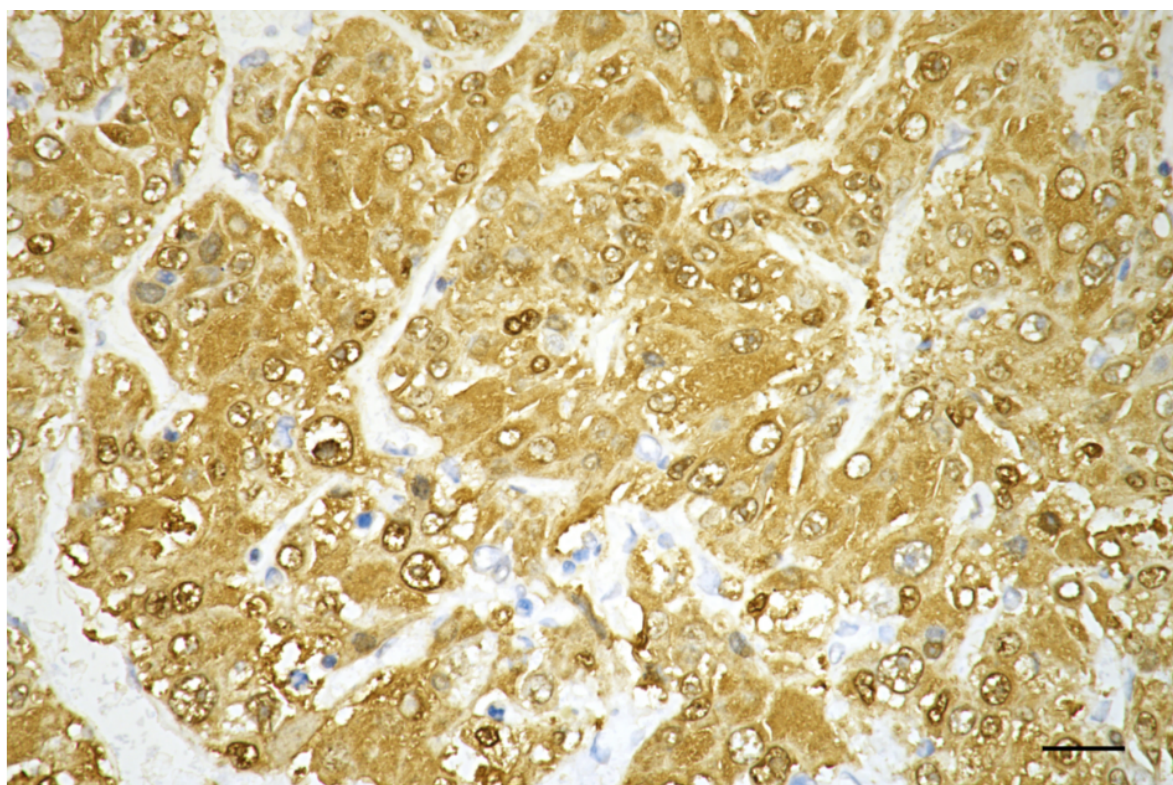
Copyright ©2025 Genuin Biotechnologies LLC

Glutamine Synthetase-Alexa Fluor® 647

Validation of Glutamine Synthetase knockdown using flow cytometry. Wild-type(WT, Blue) and knockdown(KD, Green) HeLa cells were stained with anti-Glutamine Synthetase antibody (Cat#63474, 1:2,000) and analyzed using CytoFLEX.



Immunocytochemical staining of HeLa cells using anti-Glutamate-ammonia ligase antibody (Cat#63474, 1:1,000), Top panel: wild-type (WT); Bottom panel: Glutamate-ammonia ligase shRNA knockdown (KD). Nuclei were stained blue with DAPI; Glutamate-ammonia ligase was stained magenta with Alexa Fluor® 647. Scale bar, 20 μ m. Permeabilization: Triton.



Copyright ©2025 Genuin Biotechnologies LLC

Immunohistochemistry was performed on paraffin-embedded human hepatocarcinoma using anti-Glutamate-ammonia ligase antibody (Cat#63474, 1:200). Antigen retrieval was done in sodium citrate buffer (pH 6.0). DAB was used for detection, with hematoxylin counterstaining. Images were acquired using a Nikon Ci-L Plus microscope (40× objective). Scale bar: 25 μ m.