

# KD-Validated Anti-ALPL Mouse Monoclonal Antibody



**Catalog #: 63486**

## Aliases

Alkaline Phosphatase, Biomineralization Associated; TNSALP; TNALP; TNAP; Alkaline Phosphatase, Tissue-Nonspecific Isozyme; Alkaline Phosphatase Liver/Bone/Kidney Isozyme; Tissue Non-Specific Alkaline Phosphatase; Alkaline Phosphatase, Liver/Bone/Kidney; Phosphocreatine Phosphatase; Phosphoamidase; EC 3.1.3.1; AP-TNAP; TNS-ALP; HOPS; Liver/Bone/Kidney-Type Alkaline Phosphatase; Tissue-Nonspecific ALP; EC 3.9.1.1; APTNAP; HPPA; HPPC; HPPI; HPPO

## Background

Gene Name: ALPL

NCBI Gene Entry: [249](#)

UniProt Entry: [P05186](#)

## Application Information

Molecular Weight: Predicted, 57 kDa; observed, 75 kDa

Clonality: Mouse monoclonal antibody

Clone ID: 24GB5855

Species Reactivity: Human

Applications Tested: Western blotting (WB), flow cytometry (FCM), immunocytochemistry (IC)

## Immunogen

Recombinant protein of human ALPL

## Isotype

Mouse IgG1

## Storage Buffer

Supplied in PBS (pH 7.4) containing 50% glycerol, and 0.02% sodium azide.

## Storage

Store at -20 °C for one year.

## Recommended Dilutions

Western Blotting (WB): 1:1,000-1:5,000

Flow Cytometry (FCM): 1:2,000

Immunocytochemistry (IC): 1:100-1:1,000

---

### SUPPORT

SUPPORT@GENUINBIOTECH.COM  
TEL: +1-540-855-7041

### ORDERS

SALES@GENUINBIOTECH.COM  
FAX: +1-540-855-7041

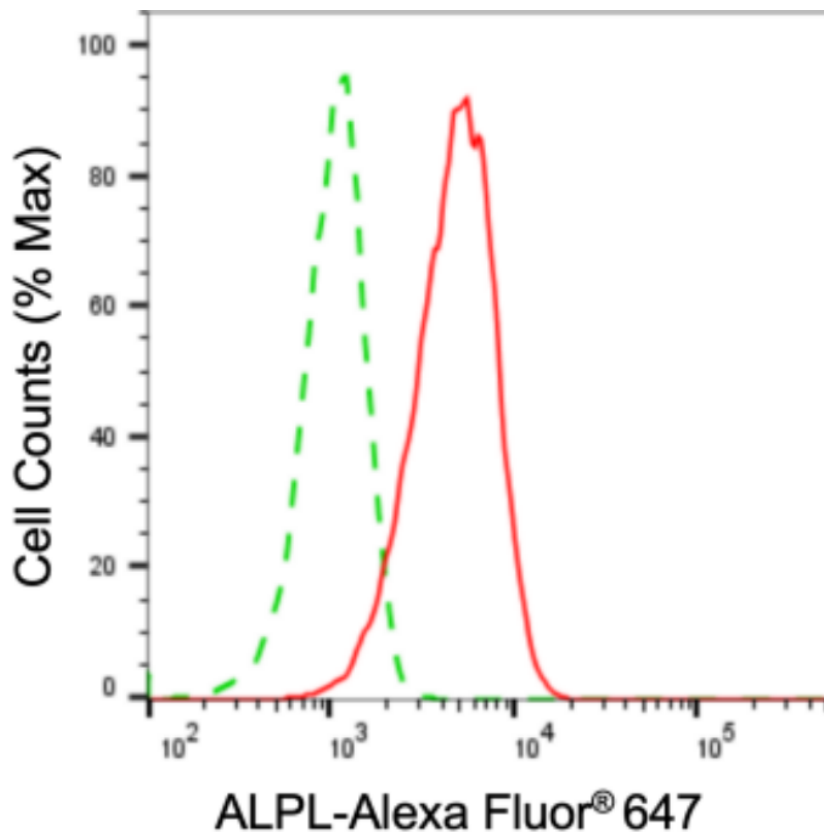
[WWW.GENUINBIOTECH.COM](http://WWW.GENUINBIOTECH.COM)

## KD-Validated Anti-ALPL Mouse Monoclonal Antibody

PAGE 2

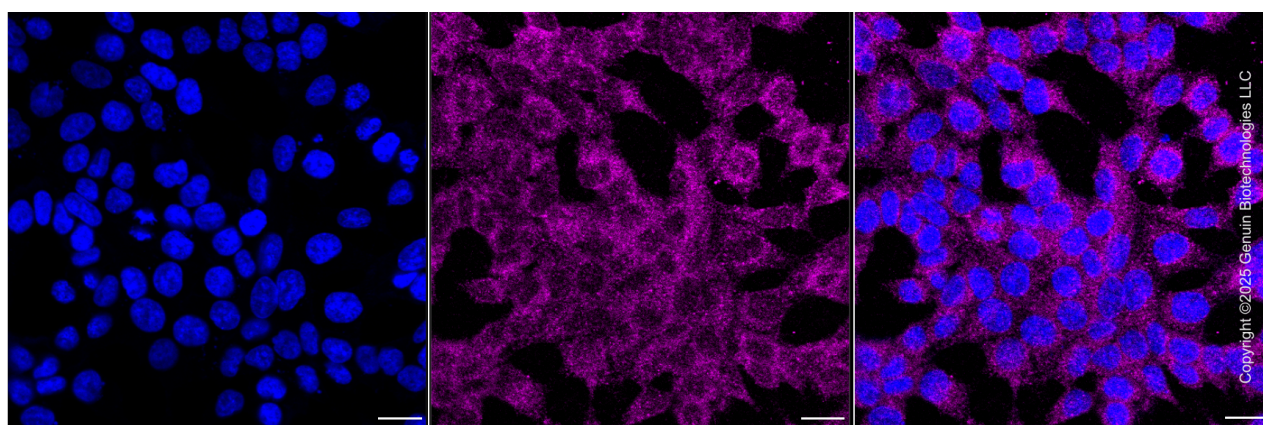
**Note:** This product is for research use only.

### Validation Data



Copyright ©2024 Genuin Biotechnologies LLC

Flow cytometric analysis of ALPL expression in HepG2 cells using anti-ALPL antibody (Cat#63486, 1:2,000). Green, isotype control; red, ALPL.



Copyright ©2025 Genuin Biotechnologies LLC

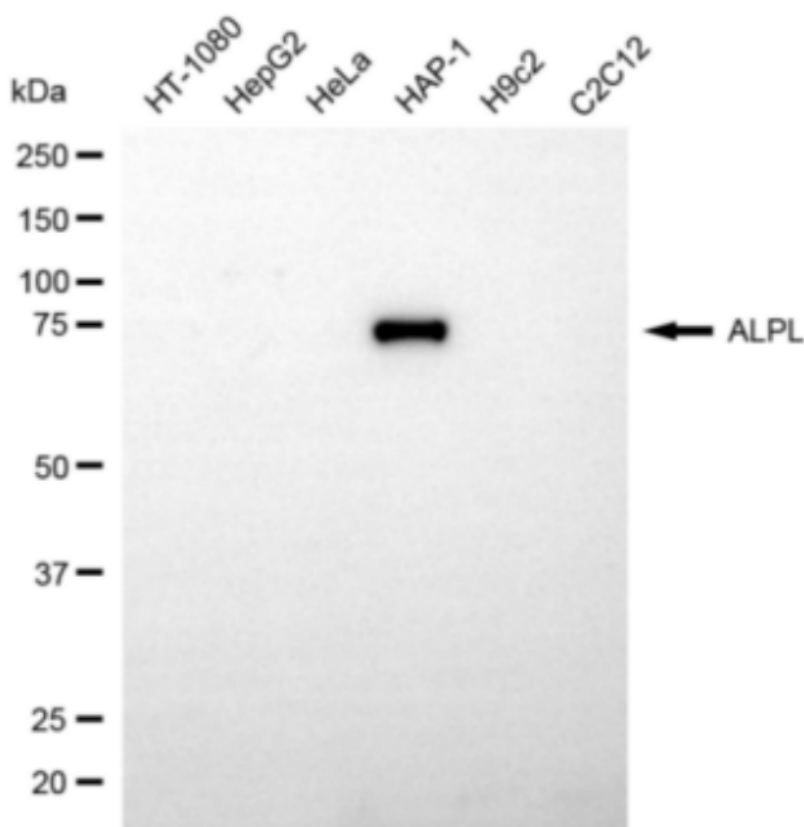
#### SUPPORT

SUPPORT@GENUINBIOTECH.COM  
TEL: +1-540-855-7041

#### ORDERS

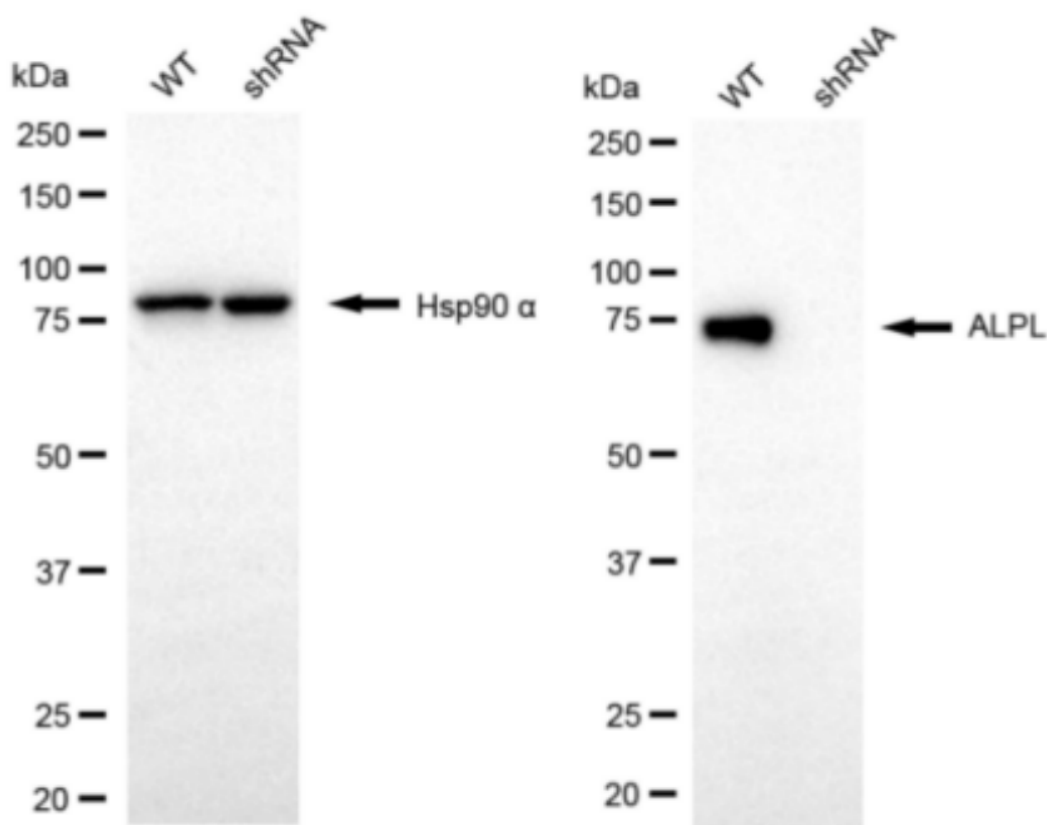
SALES@GENUINBIOTECH.COM  
FAX: +1-540-855-7041

[WWW.GENUINBIOTECH.COM](http://WWW.GENUINBIOTECH.COM)



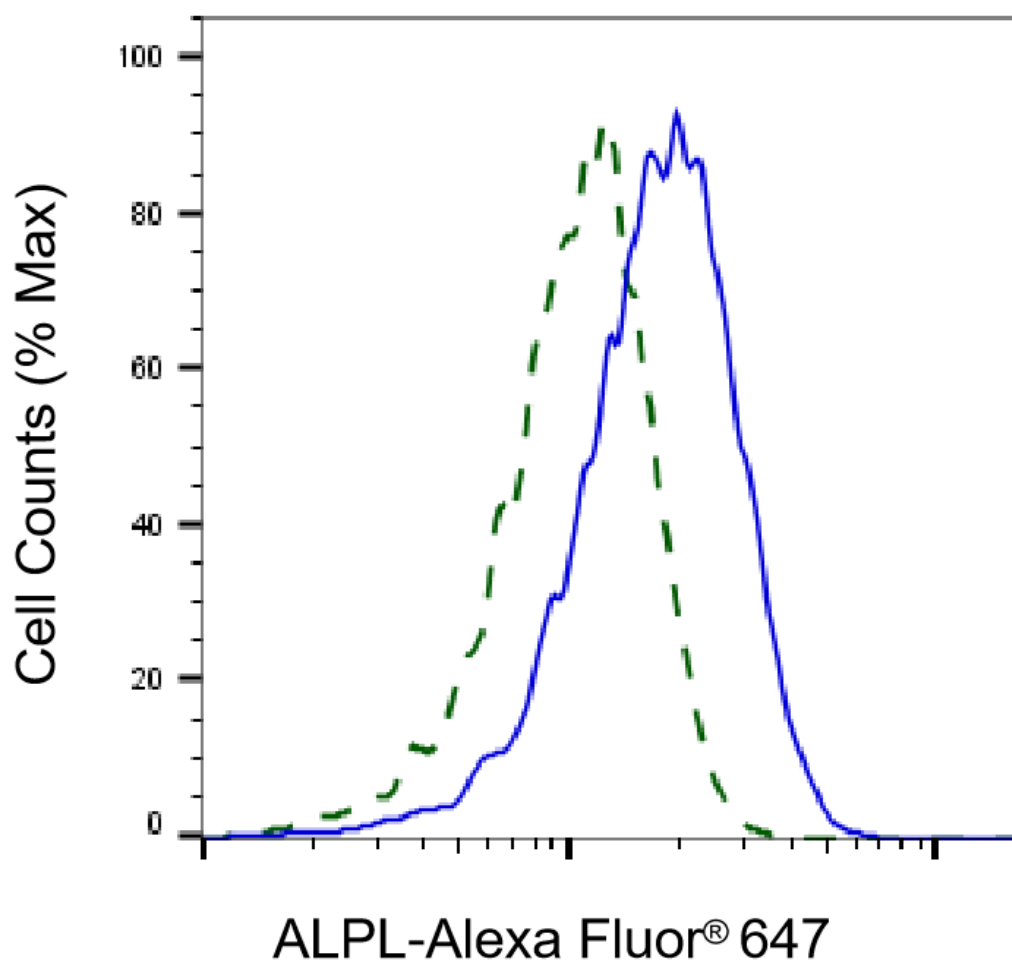
Copyright ©2024 Genuin Biotechnologies LLC

Western blotting analysis using anti-ALPL antibody (Cat#63486). Total cell lysates (30 µg) from various cell lines were loaded and separated by SDS-PAGE. The blot was incubated with anti-ALPL antibody (Cat#63486, 1:5,000) and HRP-conjugated goat anti-mouse secondary antibody (Cat#101, 1:20,000) respectively. Image was developed using FeQ™ ECL Substrate Kit (Cat#226).



Copyright ©2024 Genuin Biotechnologies LLC

Western blotting analysis using anti-ALPL antibody (Cat#63486). ALPL expression in wild type (WT) and ALPL shRNA knockdown (KD) HeLa cells with 20 µg of total cell lysates. Hsp90 α serves as a loading control. The blot was incubated with anti-ALPL antibody (Cat#63486, 1:5,000) and HRP-conjugated goat anti-mouse secondary antibody (Cat#101, 1:20,000) respectively. Image was developed using NaQ™ ECL Substrate Kit (Cat#716).



Copyright ©2025 Genuin Biotechnologies LLC

Validation of ALPL knockdown using flow cytometry. Wild-type(WT, Blue) and knockdown(KD, Green) HeLa cells were stained with anti-ALPL antibody (Cat#63486, 1:2,000) and analyzed using BD flow cytometer.