

KD-Validated Anti-eIF-2A protein kinase 2 Mouse Monoclonal Antibody



Catalog #: 63491

Aliases

eIF-2A protein kinase 2; Protein kinase RNA-activated; PKR; p68 kinase; P1/eIF-2A protein kinase

Background

Gene Name: EIF2AK2

NCBI Gene Entry: [5610](#)

UniProt Entry: [P19525](#)

Application Information

Molecular Weight: Predicted, 62 kDa, observed, 68 kDa

Clonality: Mouse monoclonal antibody

Clone ID: 24GB5880

Species Reactivity: Human

Applications Tested: Western blotting (WB), flow cytometry (FCM), immunocytochemistry (IC)

Immunogen

Recombinant protein of human EIF2AK2

Isotype

Mouse IgG1

Storage Buffer

Supplied in PBS (pH 7.4) containing 50% glycerol, and 0.02% sodium azide.

Storage

Store at -20 °C for one year.

Recommended Dilutions

Western Blotting (WB): 1:2,500-1:5,000

Flow Cytometry (FCM): 1:2,000

Immunocytochemistry (IC): 1:100-1:1,000

Note: This product is for research use only.

Validation Data

SUPPORT

SUPPORT@GENUINBIOTECH.COM
TEL: +1-540-855-7041

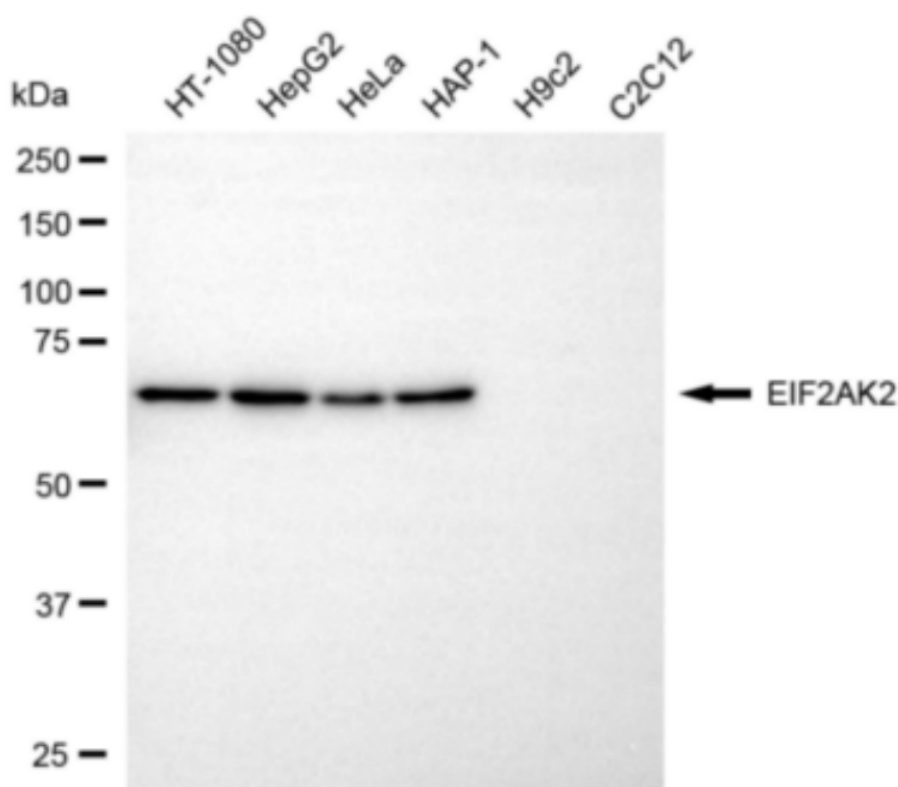
ORDERS

SALES@GENUINBIOTECH.COM
FAX: +1-540-855-7041

WWW.GENUINBIOTECH.COM

KD-Validated Anti-eIF-2A protein kinase 2 Mouse Monoclonal Antibody

PAGE 2



Copyright ©2024 Genuin Biotechnologies LLC

Western blotting analysis using anti-EIF2AK2 antibody (Cat#63491). Total cell lysates (30 µg) from various cell lines were loaded and separated by SDS-PAGE. The blot was incubated with anti-EIF2AK2 antibody (Cat#63491, 1:5,000) and HRP-conjugated goat anti-mouse secondary antibody (Cat#101, 1:20,000) respectively. Image was developed using FeQ™ ECL Substrate Kit (Cat#226). EIF2AK2, eukaryotic translation initiation factor 2 alpha kinase 2.

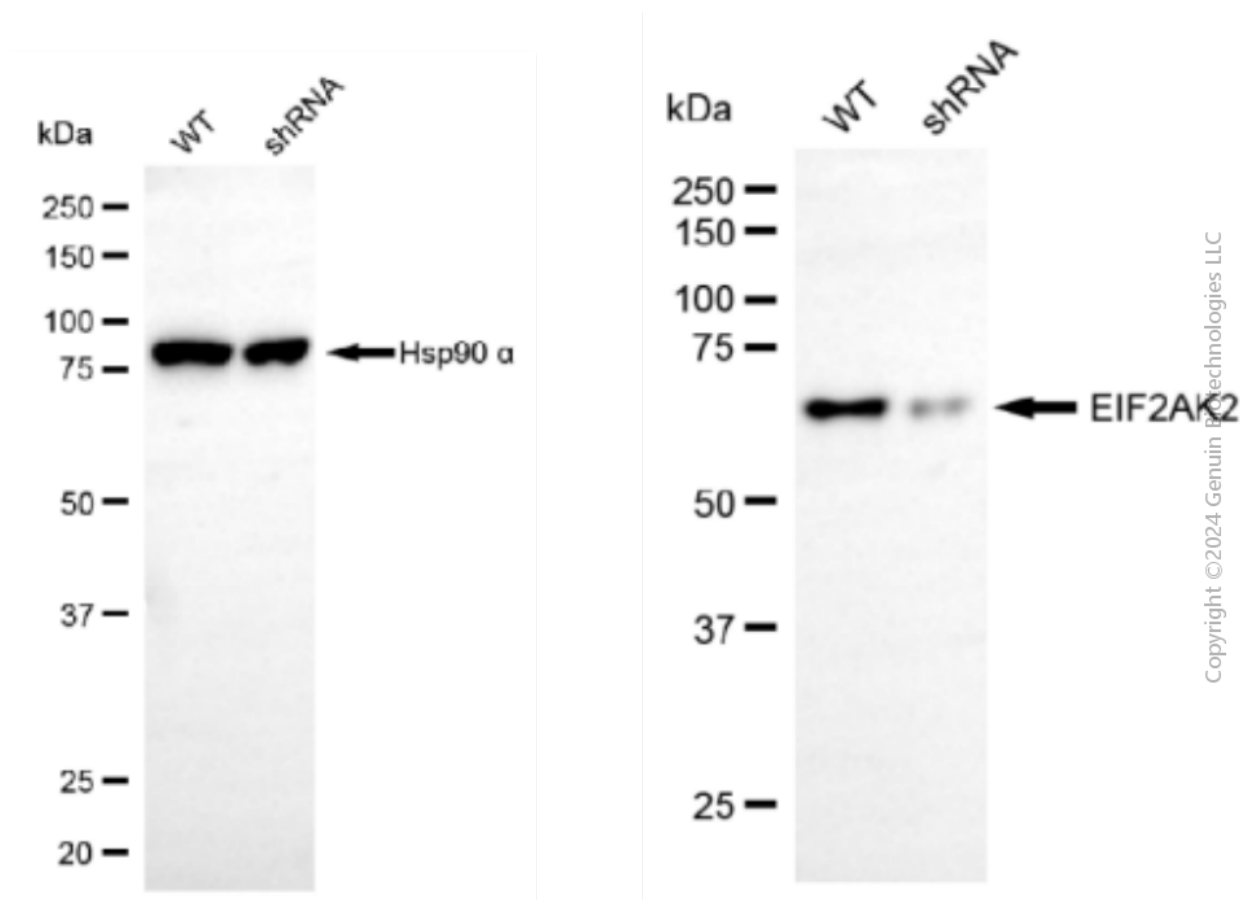
SUPPORT

SUPPORT@GENUINBIOTECH.COM
TEL: +1-540-855-7041

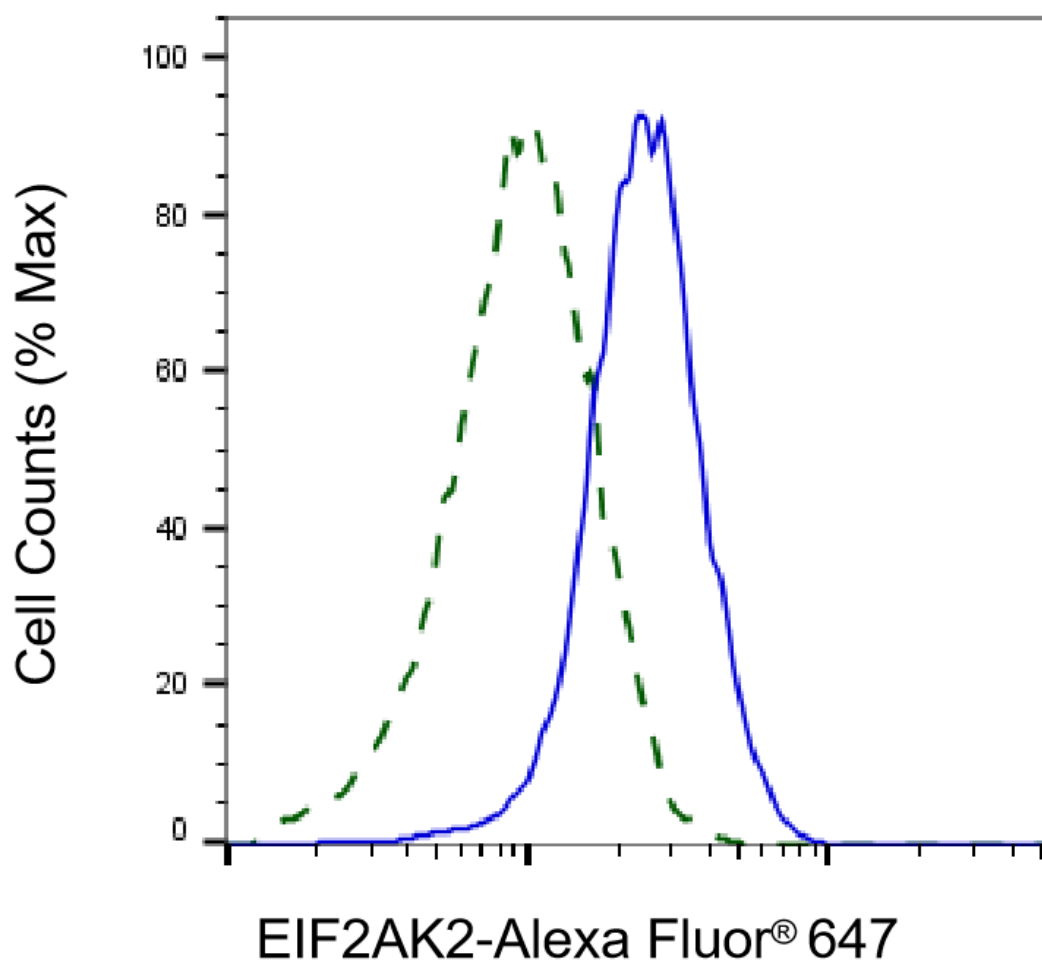
ORDERS

SALES@GENUINBIOTECH.COM
FAX: +1-540-855-7041

WWW.GENUINBIOTECH.COM

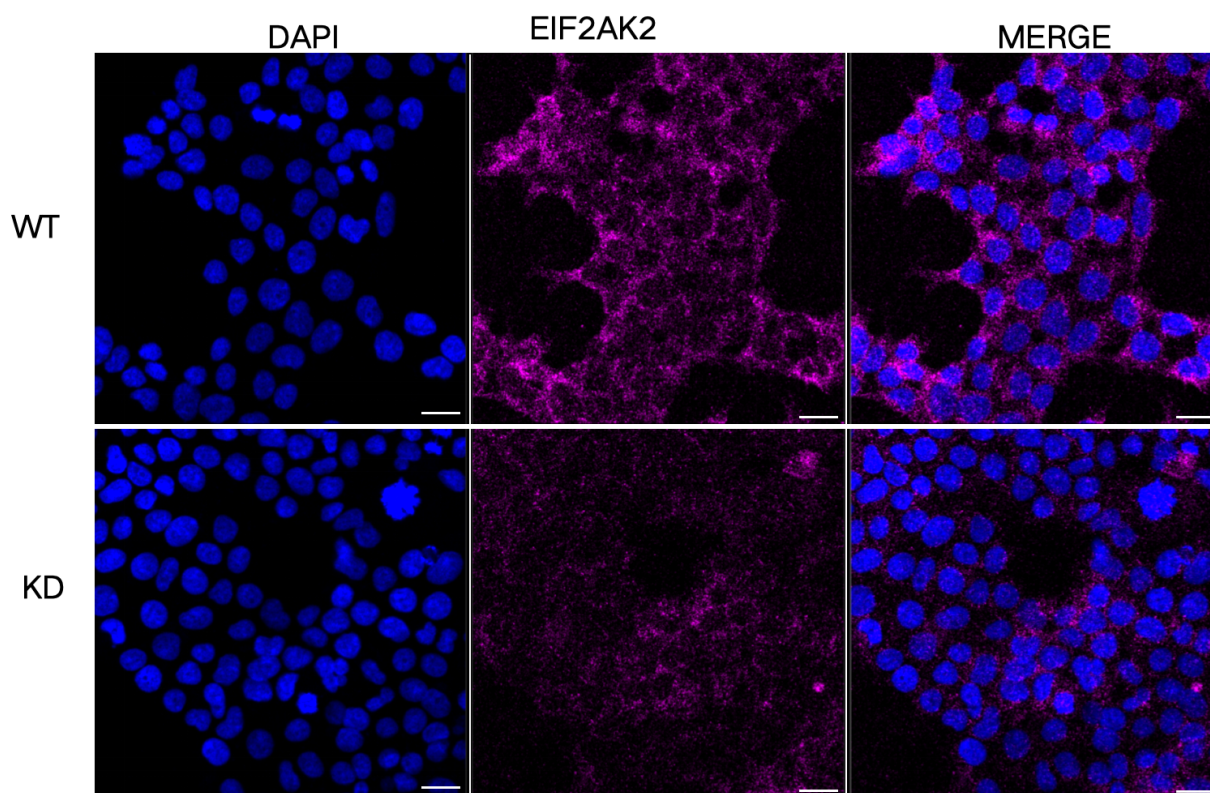


Western blotting analysis using anti-EIF2AK2 antibody (Cat#63491). EIF2AK2 expression in wild type (WT) and EIF2AK2 shRNA knockdown (KD) HeLa cells with 20 µg of total cell lysates. Hsp90 α serves as a loading control. The blot was incubated with anti-EIF2AK2 antibody (Cat#63491, 1:5,000) and HRP-conjugated goat anti-mouse secondary antibody (Cat#101, 1:20,000) respectively. Image was developed using NaQ™ ECL Substrate Kit (Cat#716).



Copyright ©2025 Genuin Biotechnologies LLC

Validation of EIF2AK2 knockdown using flow cytometry. Wild-type(WT, Blue) and knockdown(KD, Green) HeLa cells were stained with anti-EIF2AK2 antibody (Cat#63491, 1:2,000) and analyzed using BD flow cytometer.



Immunocytochemical staining of HeLa cells using anti-EIF2AK2 antibody (Cat#63491, 1:1,000), Top panel: wild-type (WT); Bottom panel: EIF2AK2 shRNA knockdown (KD). Nuclei were stained blue with DAPI; EIF2AK2 was stained magenta with Alexa Fluor® 647. Scale bar, 20 μ m.