

KD-Validated Anti-PPP5C Mouse Monoclonal Antibody



Catalog #: 63496

Aliases

PPP5C; Protein Phosphatase 5 Catalytic Subunit; PP5; PPP5; Serine/Threonine-Protein Phosphatase 5; Protein Phosphatase T; EC 3.1.3.16; PP-T; PPT; Protein Phosphatase 5, Catalytic Subunit

Background

Gene Name: PPP5C

NCBI Gene Entry: [5536](#)

UniProt Entry: [P53041](#)

Application Information

Molecular Weight: Predicted, 57 kDa; observed, 52 kDa

Clonality: Mouse monoclonal antibody

Clone ID: 24GB6210

Species Reactivity: Human

Applications Tested: Western blotting (WB), flow cytometry (FCM)

Immunogen

Recombinant protein of human PPP5C

Isotype

Mouse IgG2b

Storage Buffer

Supplied in PBS (pH 7.4) containing 50% glycerol, and 0.02% sodium azide.

Storage

Store at -20 °C for one year.

Recommended Dilutions

Western Blotting (WB): 1:500-1:2,500

Flow Cytometry (FCM): 1:2,000

Note: This product is for research use only.

Validation Data

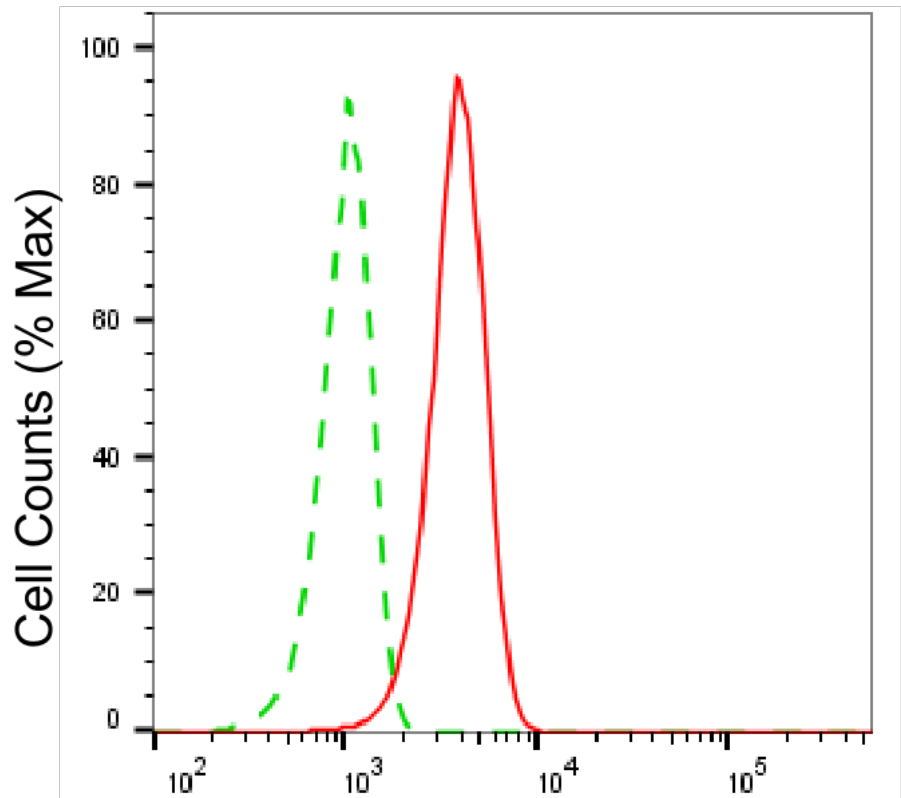
SUPPORT

SUPPORT@GENUINBIOTECH.COM
TEL: +1-540-855-7041

ORDERS

SALES@GENUINBIOTECH.COM
FAX: +1-540-855-7041

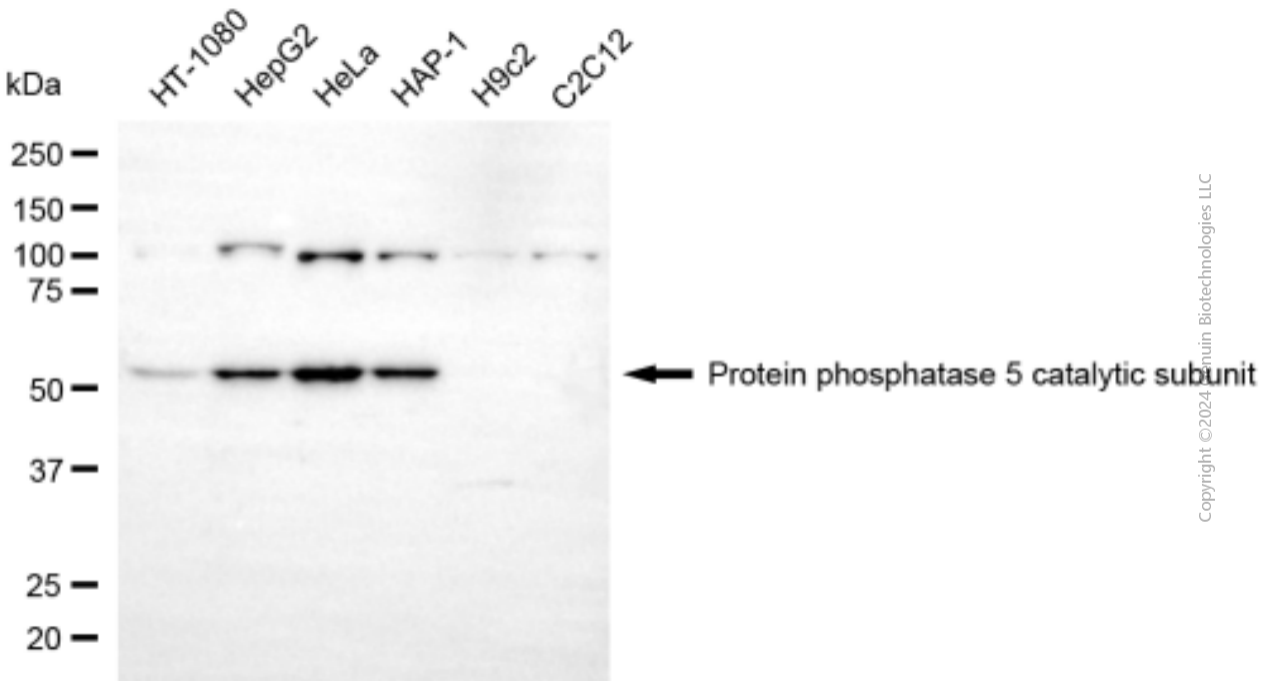
WWW.GENUINBIOTECH.COM



Copyright ©2025 Genuin Biotechnologies LLC

Protein phosphatase 5 catalytic subunit-Alexa Fluor® 647

Flow cytometric analysis of Protein phosphatase 5 catalytic subunit expression in HepG2 cells using anti-Protein phosphatase 5 catalytic subunit antibody (Cat#63496, 1:2,000). Green, isotype control; red, Protein phosphatase 5 catalytic subunit.

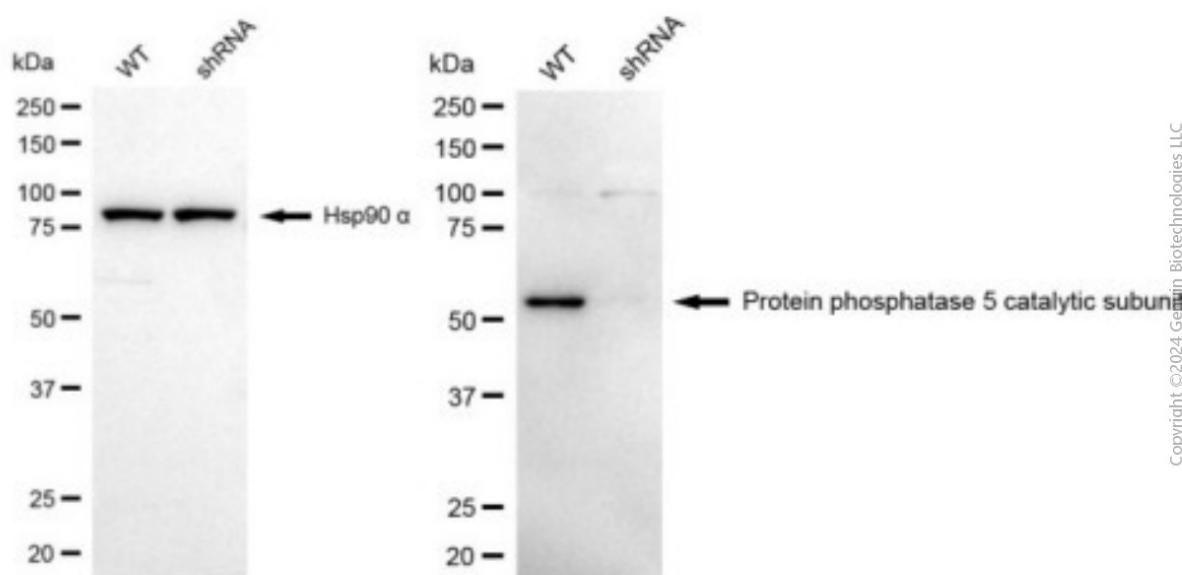


Copyright ©2024 Genuin Biotechnologies LLC

KD-Validated Anti-PPP5C Mouse Monoclonal Antibody

PAGE 3

Western blotting analysis using anti-protein phosphatase 5 catalytic subunit antibody (Cat#63496). Total cell lysates (30 µg) from various cell lines were loaded and separated by SDS-PAGE. The blot was incubated with anti-protein phosphatase 5 catalytic subunit antibody (Cat#63496, 1:2,500) and HRP-conjugated goat anti-mouse secondary antibody (Cat#101, 1:20,000) respectively. Image was developed using FeQ™ ECL Substrate Kit (Cat#226).



Western blotting analysis using anti-protein phosphatase 5 catalytic subunit antibody (Cat#63496). Protein Phosphatase 5 catalytic subunit expression in wild type (WT) and protein phosphatase 5 catalytic subunit (PPP5C) shRNA knockdown (KD) HeLa cells with 20 µg of total cell lysates. Hsp90 α serves as a loading control. The blot was incubated with anti-protein phosphatase 5 catalytic subunit antibody (Cat#63496, 1:2,500) and HRP-conjugated goat anti-mouse secondary antibody (Cat#101, 1:20,000) respectively. Image was developed using FeQ™ ECL Substrate Kit (Cat#226).

SUPPORT

SUPPORT@GENUINBIOTECH.COM
TEL: +1-540-855-7041

ORDERS

SALES@GENUINBIOTECH.COM
FAX: +1-540-855-7041

WWW.GENUINBIOTECH.COM