

Catalog #: 63498

Aliases

AKR1A1; Aldo-Keto Reductase Family 1 Member A1; ALR; Aldehyde Reductase; DD3; Dihydrodiol Dehydrogenase 3; Glucuronolactone Reductase; Glucuronate Reductase; EC 1.1.1.2; ALDR1; Aldo-Keto Reductase Family 1, Member A1 (Aldehyde Reductase); Epididymis Secretory Sperm Binding Protein Li 165mP; Epididymis Secretory Protein Li 6; Alcohol Dehydrogenase [NADP(+)]; Alcohol Dehydrogenase; EC 1.1.1.372; HEL-S-165mP; EC 1.1.1.54; EC 1.1.1.19; EC 1.1.1.20; EC 1.1.1; HEL-S-6; ARM

Background

Gene Name: AKR1A1

NCBI Gene Entry: [10327](#)

UniProt Entry: [P14550](#)

Application Information

Molecular Weight: Predicted, 37 kDa; observed, 37 kDa

Clonality: Mouse monoclonal antibody

Clone ID: 24GB6220

Species Reactivity: Human, mouse

Applications Tested: Western blotting (WB), flow cytometry (FCM), immunocytochemistry (IC)

Immunogen

Recombinant protein of human AKR1A1

Isotype

Mouse IgG2b

Storage Buffer

Supplied in PBS (pH 7.4) containing 50% glycerol, and 0.02% sodium azide.

Storage

Store at -20 °C for one year.

Recommended Dilutions

Western Blotting (WB): 1:1,000-1:5,000

Flow Cytometry (FCM): 1:2,000

Immunocytochemistry (IC): 1:100-1:1,000

SUPPORT

SUPPORT@GENUINBIOTECH.COM
TEL: +1-540-855-7041

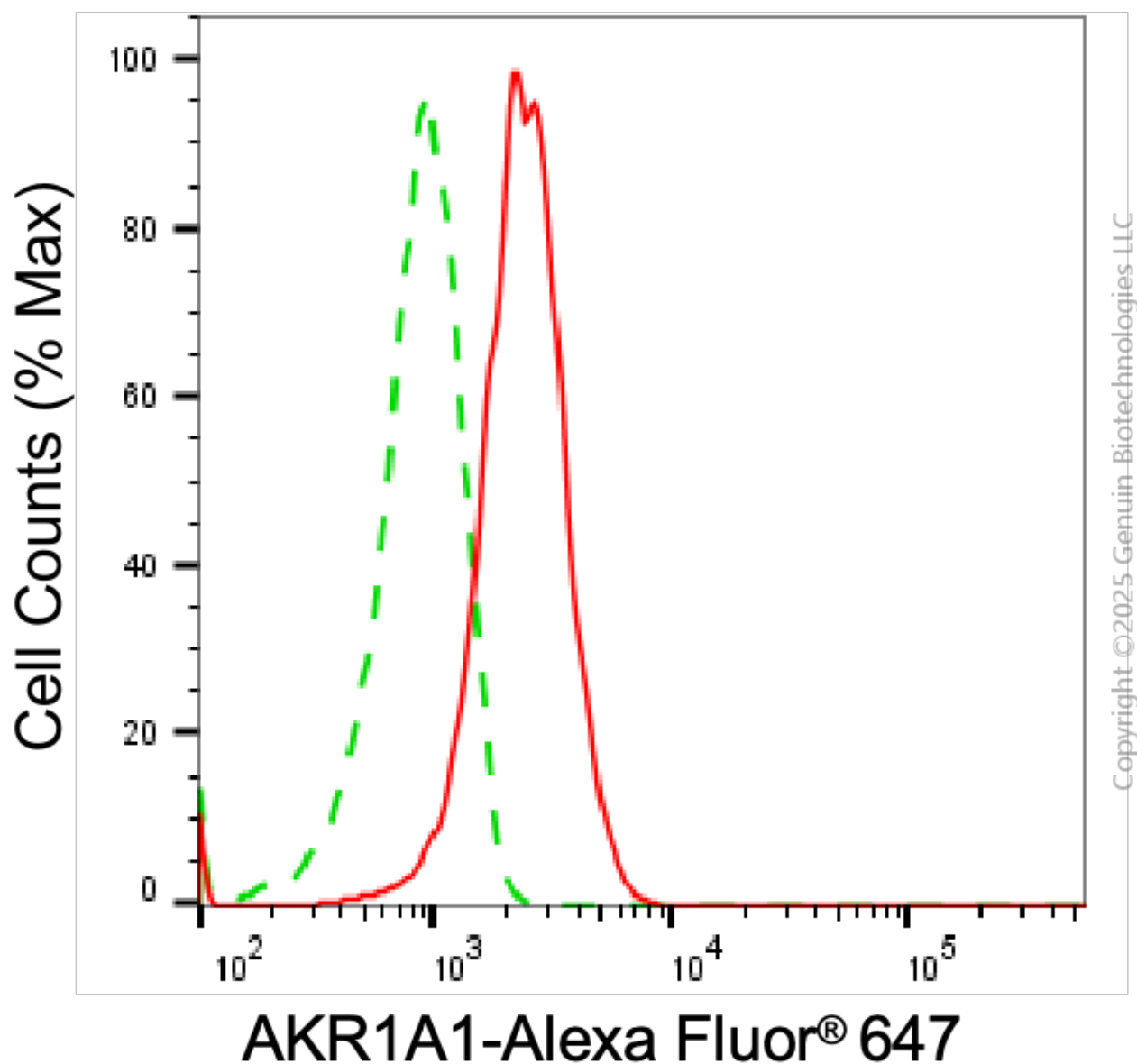
ORDERS

SALES@GENUINBIOTECH.COM
FAX: +1-540-855-7041

WWW.GENUINBIOTECH.COM

Note: This product is for research use only.

Validation Data



Flow cytometric analysis of AKR1A1 expression in HepG2 cells using anti-AKR1A1 antibody (Cat#63498, 1:2,000). Green, isotype control; red, AKR1A1.

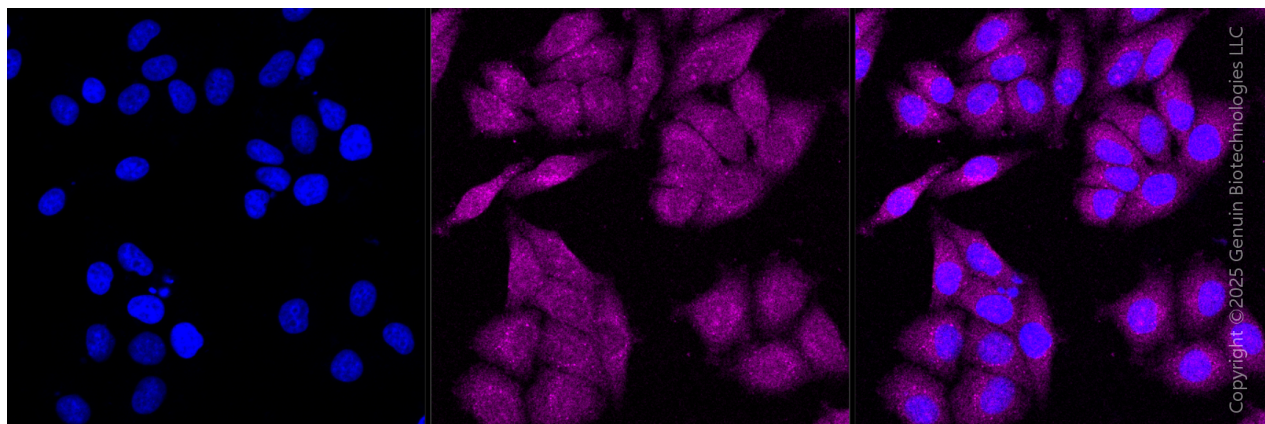
SUPPORT

SUPPORT@GENUINBIOTECH.COM
TEL: +1-540-855-7041

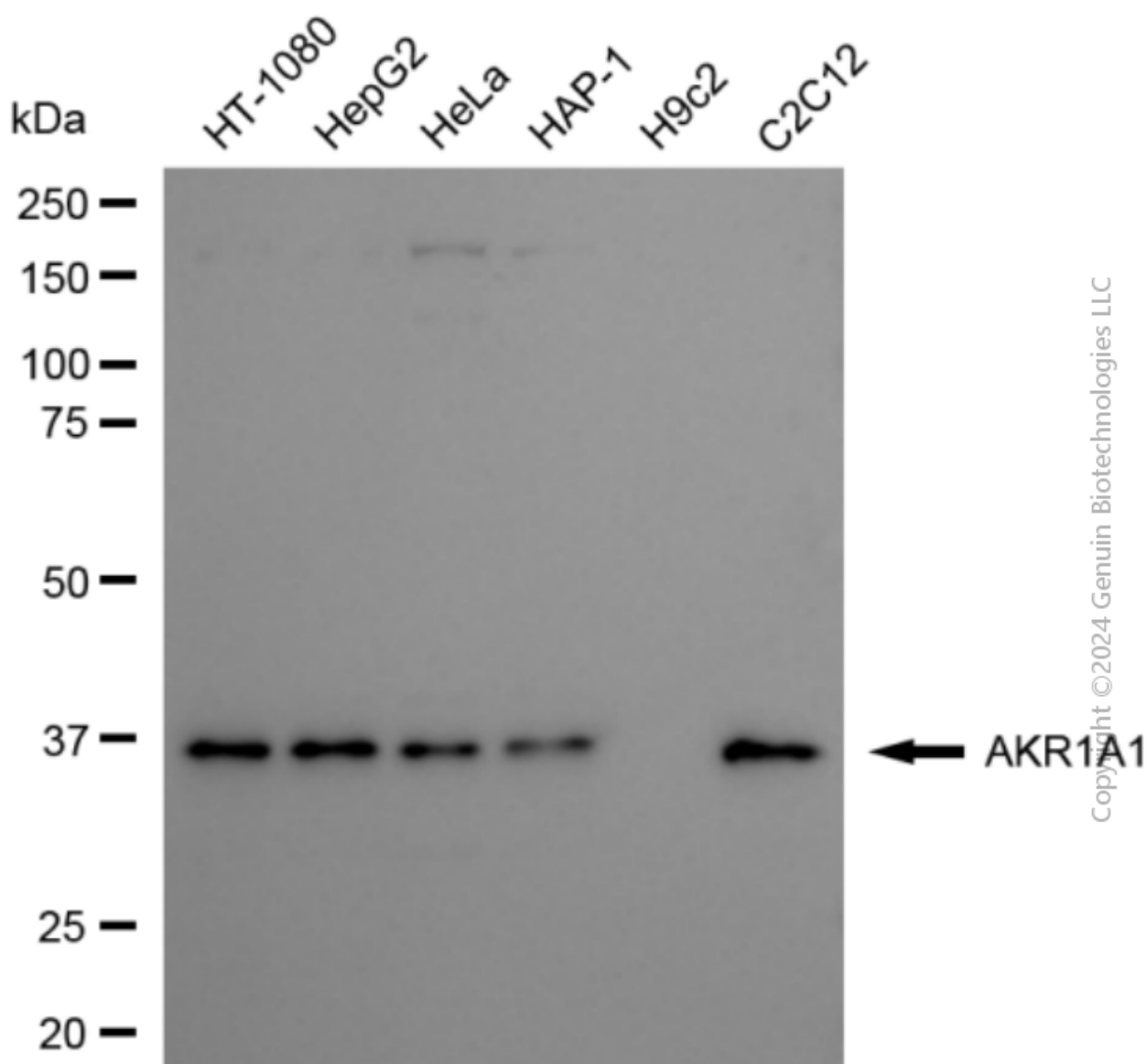
ORDERS

SALES@GENUINBIOTECH.COM
FAX: +1-540-855-7041

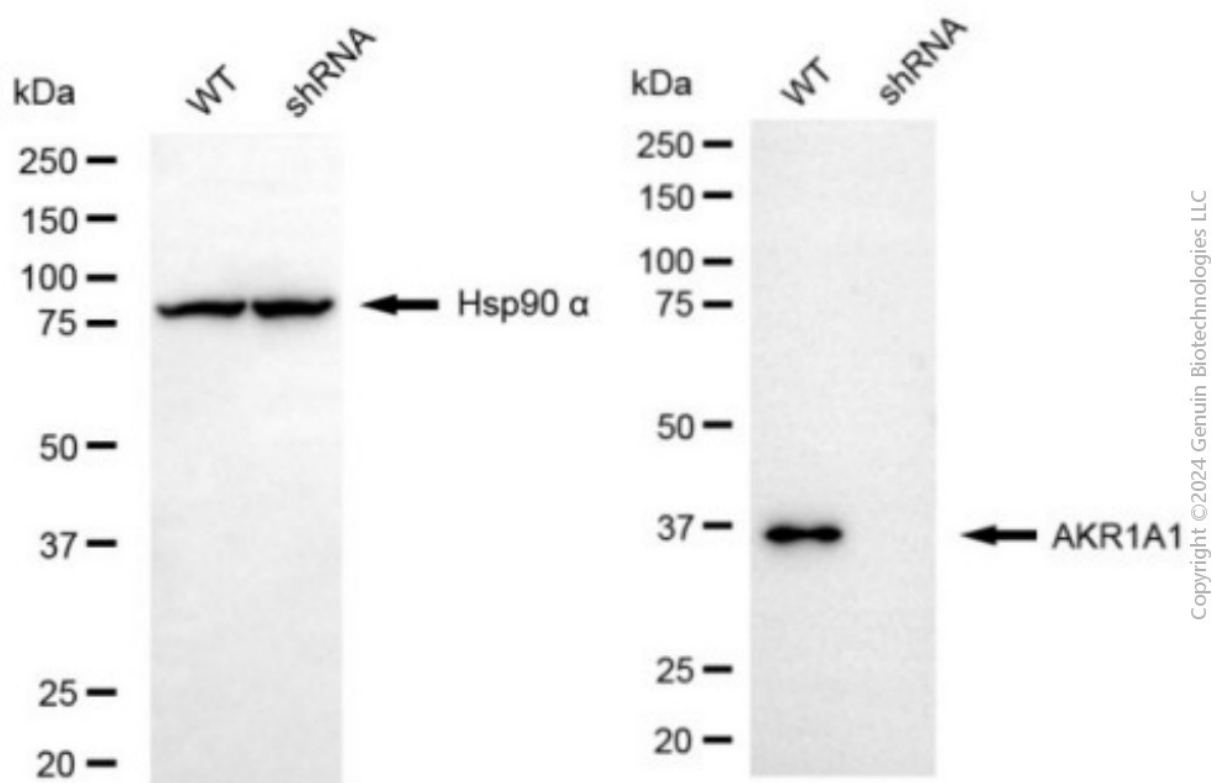
WWW.GENUINBIOTECH.COM



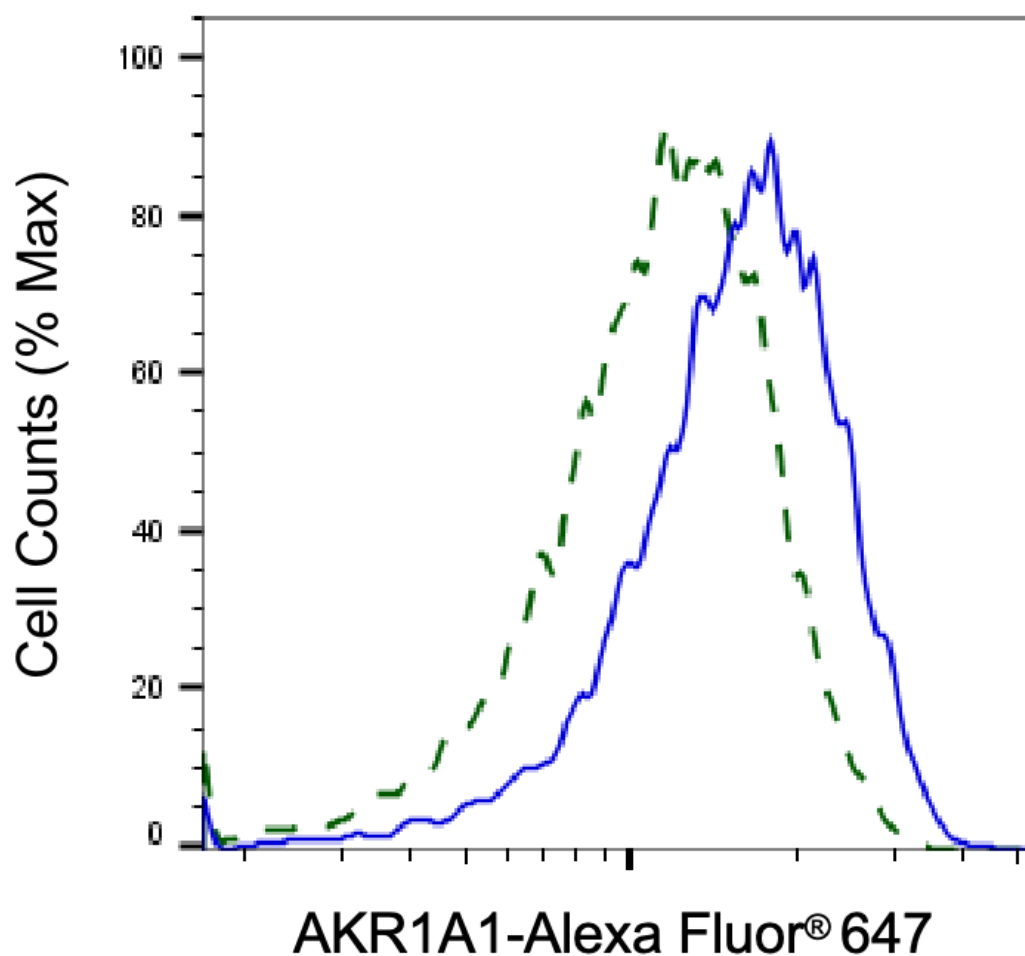
Immunocytochemical staining of HepG2 cells with anti-AKR1A1 antibody (Cat#63498, 1:1,000) . Nuclei were stained blue with DAPI; AKR1A1 was stained magenta with Alexa Fluor® 647. Images were taken using Leica stellaris 5. Protein abundance based on laser Intensity and Smart Gain□Medium. Scale bar, 20 μm.



Western blotting analysis using anti-AKR1A1 antibody (Cat#63498). Total cell lysates (30 µg) from various cell lines were loaded and separated by SDS-PAGE. The blot was incubated with anti-AKR1A1 antibody (Cat#63498, 1:5,000) and HRP-conjugated goat anti-mouse secondary antibody (Cat#101, 1:20,000) respectively. Image was developed using FeQ™ ECL Substrate Kit (Cat#226).

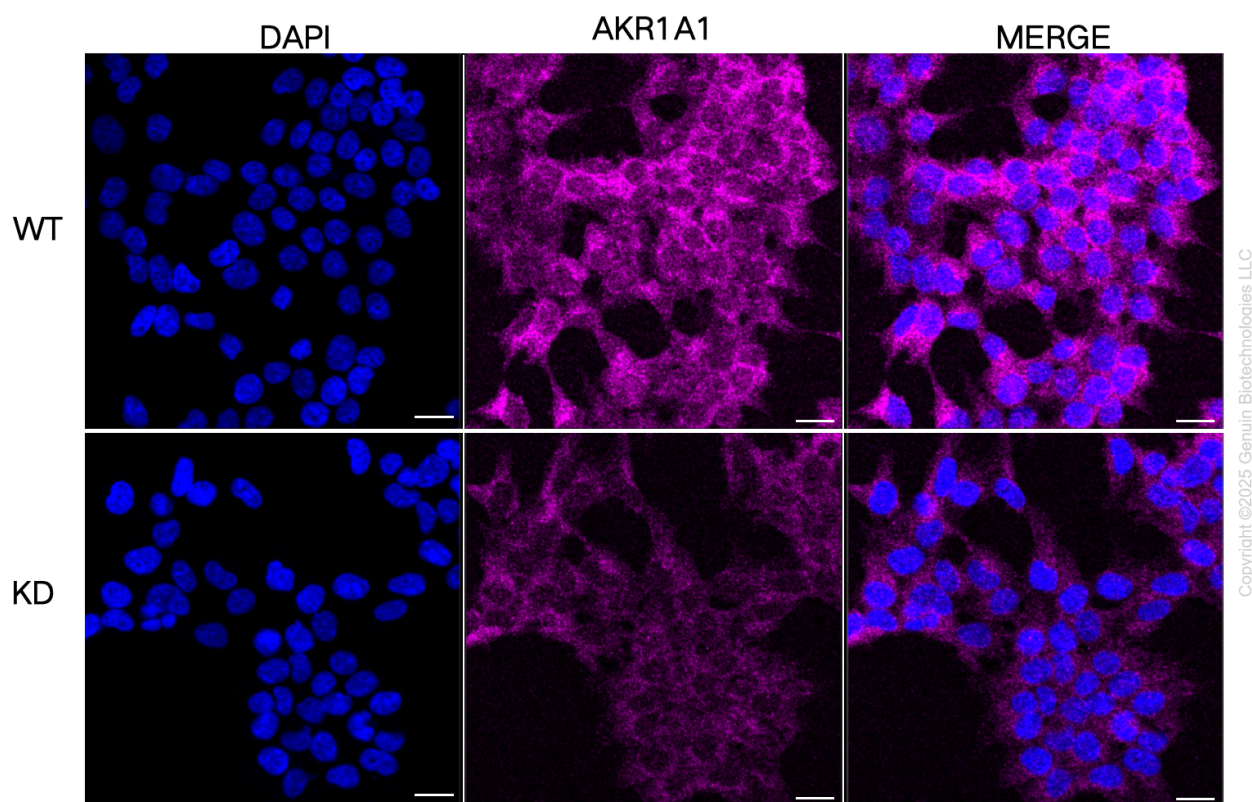


Western blotting analysis using anti-AKR1A1 antibody (Cat#63498). AKR1A1 expression in wild type (WT) and AKR1A1 shRNA knockdown (KD) HeLa cells with 20 µg of total cell lysates. Hsp90 α serves as a loading control. The blot was incubated with anti-AKR1A1 antibody (Cat#63498, 1:5,000) and HRP-conjugated goat anti-mouse secondary antibody (Cat#101, 1:20,000) respectively. Image was developed using NaQ™ ECL Substrate Kit (Cat#716).



Copyright ©2025 Genuin Biotechnologies LLC

Validation of AKR1A1 knockdown using flow cytometry. Wild-type(WT, Blue) and knockdown(KD, Green) HeLa cells were stained with anti-AKR1A1 antibody (Cat#63498, 1:2,000) and analyzed using BD flow cytometer.



Immunocytochemical staining of HeLa cells using anti-AKR1A1 antibody (Cat#63498, 1:1,000), Top panel: wild-type (WT); Bottom panel: AKR1A1 shRNA knockdown (KD). Nuclei were stained blue with DAPI; AKR1A1 was stained magenta with Alexa Fluor® 647. Scale bar, 20 μ m.